



WILDERNESS

# Wilderness – Our Camps

VIRTUOSO TRAVEL WEEK

- 01 BISATE
- 02 DUMATAU
- 03 HOANIB
- 04 LINKWASHA
- 05 MOMBO
- 06 MOKETE
- 07 USAWA SERENGETI



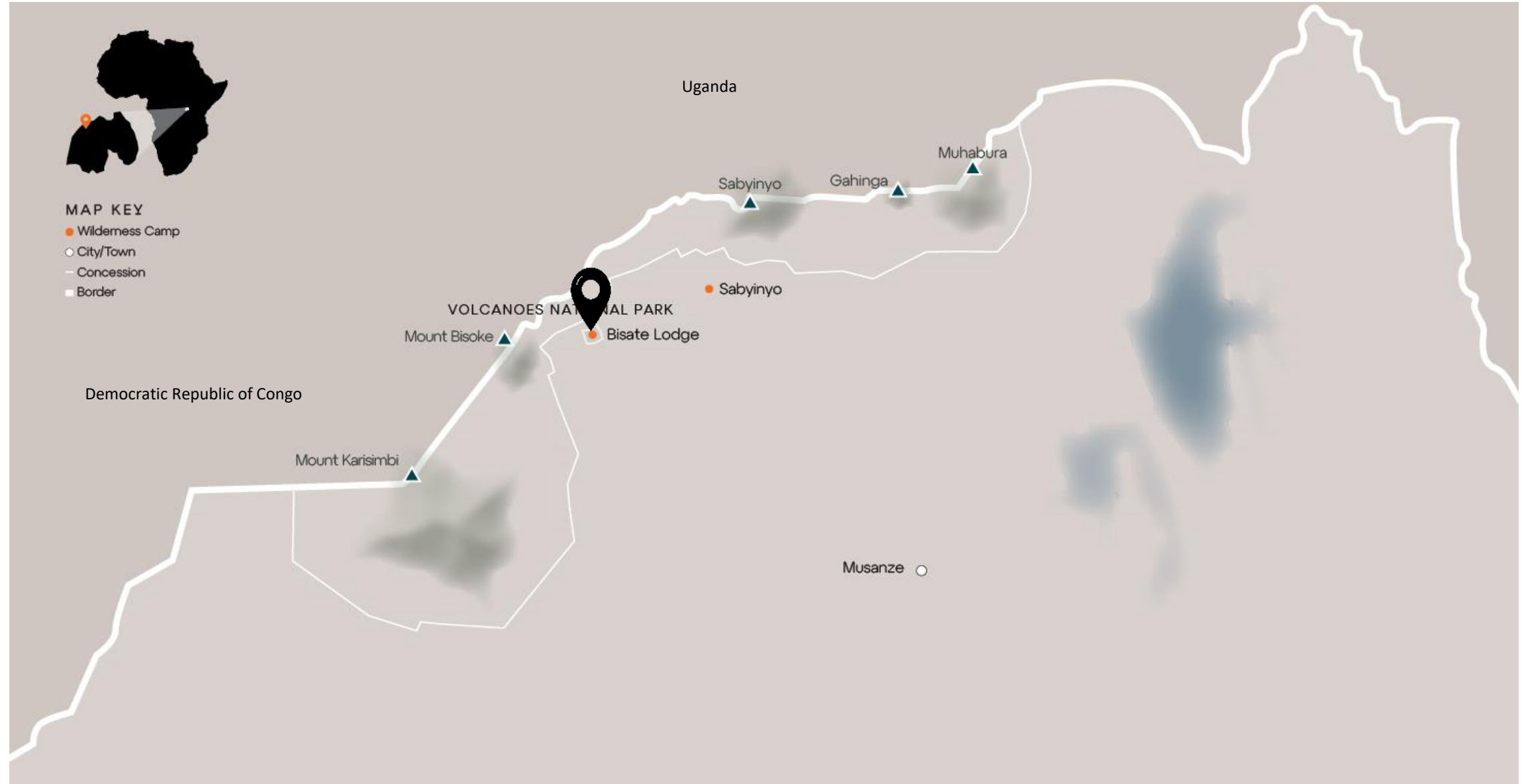
# CONTENTS



01

# Bisate

VOLCANOES NP, RWANDA



UNIQUE SELLING POINTS

# BISATE

- Easy access to Volcanoes National Park – **the best place for intimate interactions with habituated gorillas.**
- Scenic and biodiverse, the rainforest offers a **phenomenal array of Albertine Rift species**, including golden monkeys as well as many endemic birds.
- **Trek one of three volcanoes**, discover the legacy of the legendary primatologist Dian Fossey and visit the Ellen DeGeneres Campus of the Dian Fossey Gorilla Fund.
- At the lodge guests can assist with its **visionary reforestation project** by planting a tree; or enrich their experience through meaningful engagement and interactions with the local community.



# About Bisate



6 Forest  
Villas



Guided walks and  
drives



Reforestation  
programme



Gorilla  
trekking



Cultural  
excursions



BISATE PURPOSE

# A conservation tourism first

The vision of Bisate is to be a model of sustainable hospitality and conservation in Rwanda. Its pioneering reforestation and rehabilitation projects mean each guest partners with us in contributing to biodiversity initiatives and local community upliftment, making a far-reaching positive impact on an iconic endangered species: the mountain gorilla.



ACCOMMODATION

# Sublime Forest Villas

- Since opening in 2017, luxurious Bisate has been awarded, and continues to receive, numerous accolades for its visionary impact and sublime accommodation.
- Both the architecture of the lodge, and the interiors of the six exquisitely appointed en-suite Forest Villas mindfully embody the traditions of Rwandan royalty.
- Bisate's superior hospitality is inspired by its exuberant staff, cultural interactions and its sophisticated, locally sourced cuisine.

















MAIN LOUNGE AREA



MAIN DINING AREA AND BAR

BISATE KWANDA DAY LOUNGE







# THANK YOU

[HOME](#)

[BISATE](#)

[DUMATAU](#)

[HOANIB](#)

[LINKWASHA](#)

[MOMBO](#)

[MOKETE](#)

[USAWA](#)



WILDERNESS

02

# DumaTau

LINYANTI RESERVE, BOTSWANA





UNIQUE SELLING POINTS

# DumaTau

- Uniquely placed at the intersection of three rivers, the Linyanti Wildlife Reserve boasts the **greatest habitat diversity and game viewing in northern Botswana.**
- **Home to the highest density of elephants** in Africa, DumaTau is an exceptional and immersive elephant experience, as herds traverse two ancient wildlife corridors at the foot of the Rift Valley.
- **Consistent wild dog and leopard sightings**, as well as other predators are seen following the prolific plains game.
- Thrilling wildlife encounters from the luxury of the plunge pools on guests' private decks. Or from the **diverse experiences on offer** - including boating, game drives, helicopter and on foot.



# About DumaTau



10 tents  
(2 family)



100% solar



Helicopter flips



Spa



Catch-and-  
release fishing



Game drives



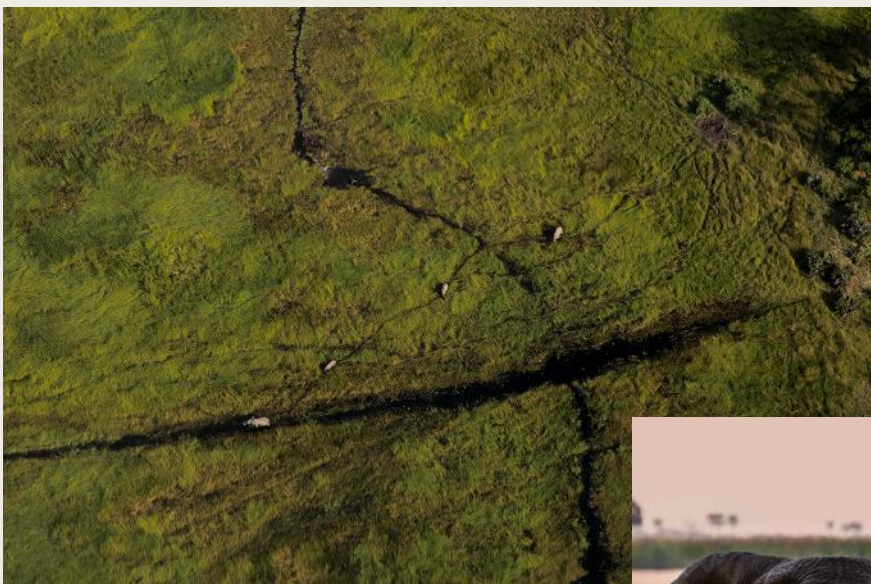
Barge



Boating



Guided nature  
walks



DUMATAU PURPOSE

# Guardians of the wild

DumaTau seeks to ensure the continued protection of a piece of land within the Kavango-Zambezi Transfrontier Conservation Area, an enormous area that spans borders, and is thus pivotal for the conservation of the greater populations of elephants and wild dogs, particularly.

ACCOMMODATION

# Ultra-spacious tented suites

- This premium, artful and contemporary camp – that seemingly floats on water – provides the highest level in safari comfort.
- The most spacious offering in the Okavango Delta is reflected in the camp's generous suites, each with private plunge pools.









GUIDED NATURE WALK, BOATING  
SUNDOWNER



HELICOPTER FLIP



SUNSET BOATING EXPERIENCE



















SPA AT OSPREY RETREAT



IN-POOL LOUNGERS, OSPREY RETREAT



GUEST SUITE LOUNGE



LOUNGE, BATHROOM

# THANK YOU

[HOME](#)

[BISATE](#)

[DUMATAU](#)

[HOANIB](#)

[LINKWASHA](#)

[MOMBO](#)

[MOKETE](#)

[USAWA](#)



WILDERNESS



03

# Hoanib Skeleton Coast Camp

KAOKOLAND, NAMIBIA

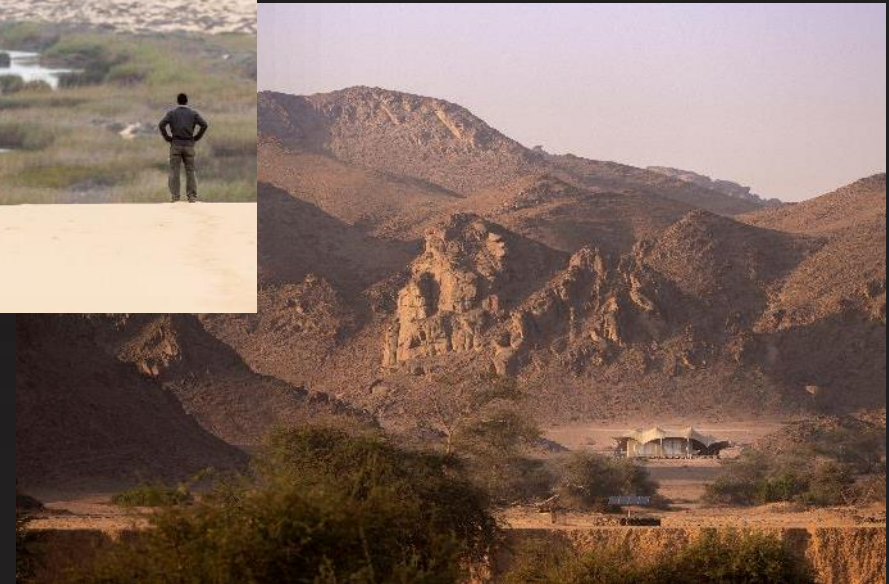




UNIQUE SELLING POINTS

# Hoanib Skeleton Coast Camp

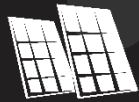
- A stay here **offers a raw, rugged and intrepid adventure** in a surprisingly life-filled private wilderness area with access to Namibia's legendary Skeleton Coast.
- **Day trips overlanding to the wild Skeleton Coast** include a flight back to camp for a jaw-dropping aerial view of the outward journey.
- Activities from camp reveal a **surprising amount of desert-adapted wildlife**, including elephants, oryx, giraffes - and even lions and the elusive brown hyena, as well as Rüppell's korhaan, Benguela long-billed lark and Verreaux's eagle.
- Insights into the area and its wildlife are presented at the **in-camp Research Centre**, with opportunities to engage with resident researchers.



# About Hoanib Skeleton Coast Camp



8 tents  
(1 family)



100% solar



Skeleton Coast  
drive/flight



Nature drives  
and walks



Olympus  
photography



Research Centre



HOANIB SKELETON COAST CAMP PURPOSE

# Desert Conservation Legacy

Hoanib Skeleton Coast Camp is a centre for research and the conservation of desert-adapted carnivores in this harsh region: lions and brown hyenas.

The camp is also part of a joint venture partnership with three neighbouring conservancies, so guests' visits benefit the people of the area.

ACCOMMODATION

# Chic luxury in an ancient landscape

- An icon for the high-end, intrepid traveller seeking chic and exceptional hospitality within a startlingly rugged and isolated, ancient landscape.
- Overlooking a wide desert valley that slopes down to the sporadically flowing Hoanib River, the camp looks out over a waterhole that attracts lions, elephants, giraffes and sometimes brown hyenas.



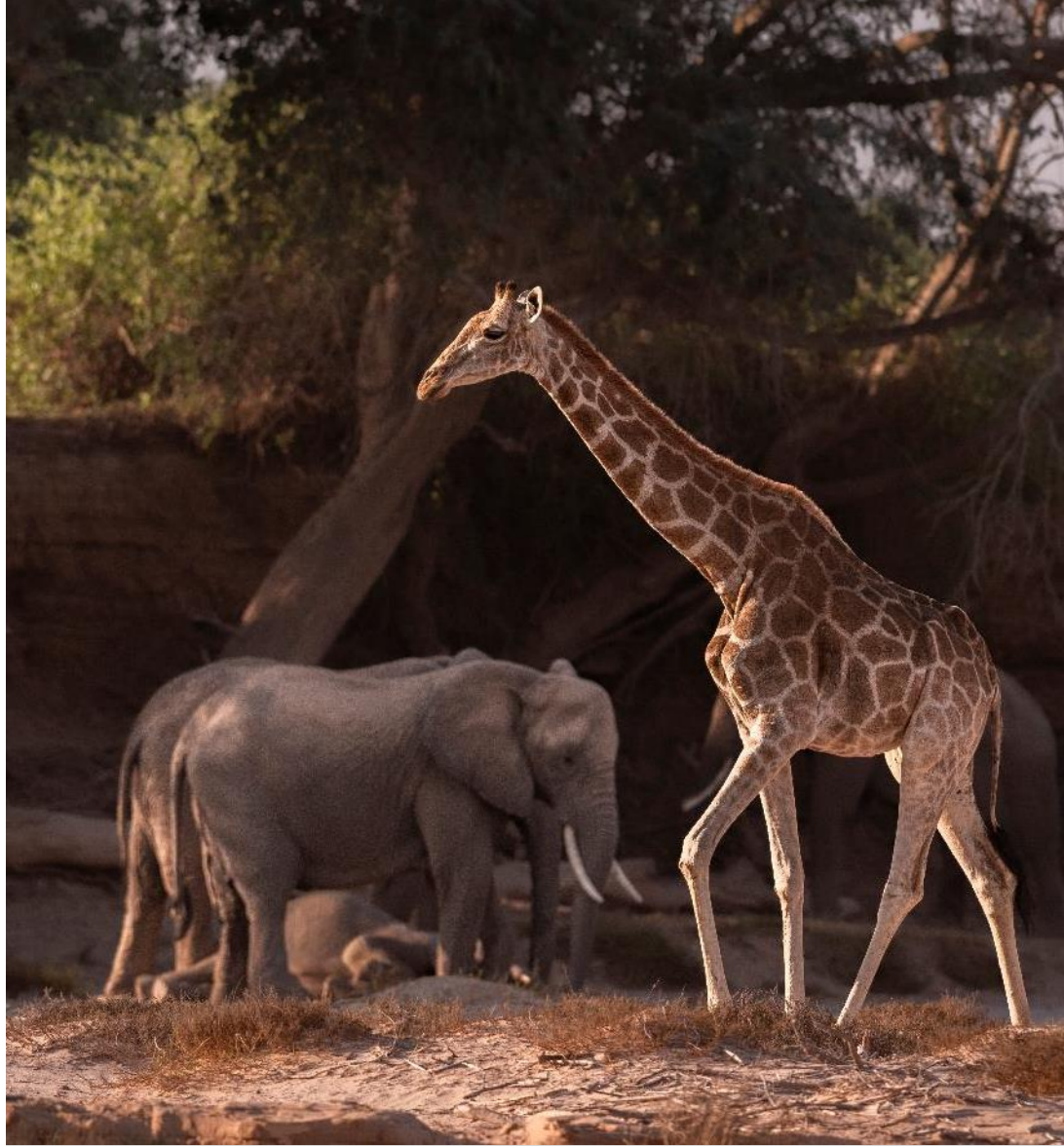
AERIAL VIEW OF THE CAMP











FLAMINGOS AT AN OASIS, DESERT-  
ADAPTED GIRAFFE



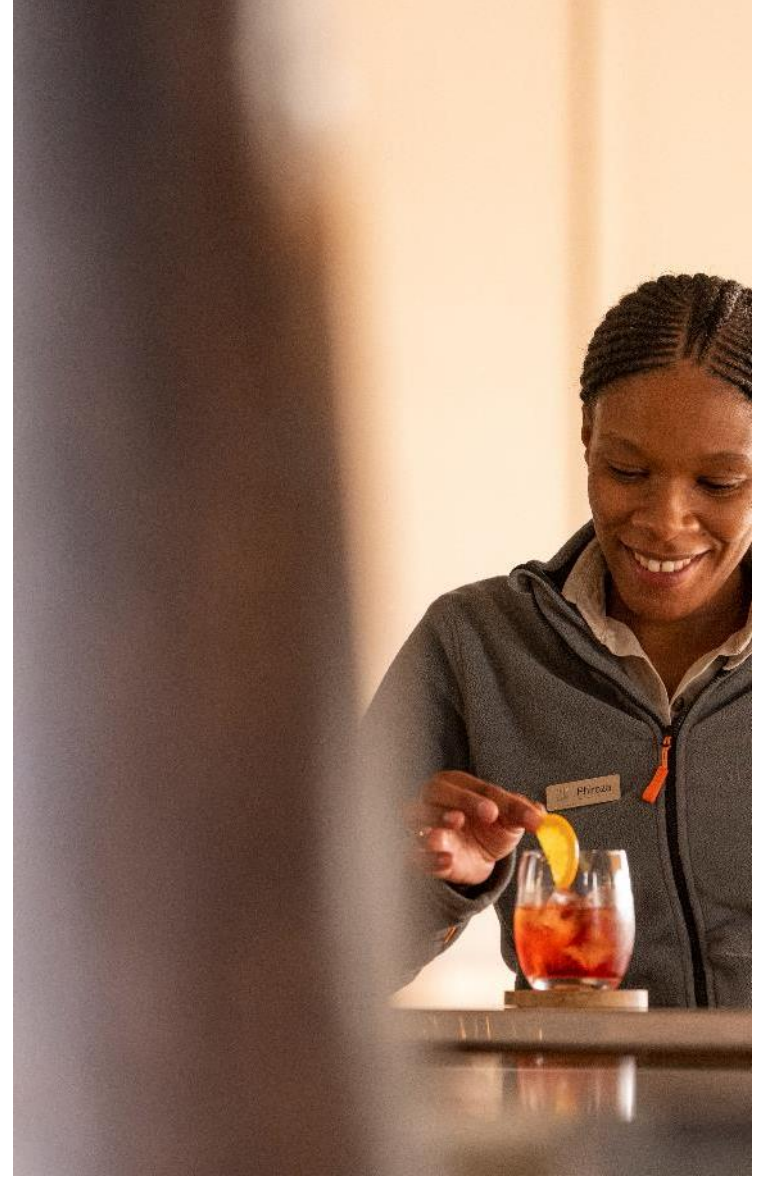
BROWN HYENA

SKELETON COAST SCENIC FLIGHT



CAPE FUR SEAL COLONY





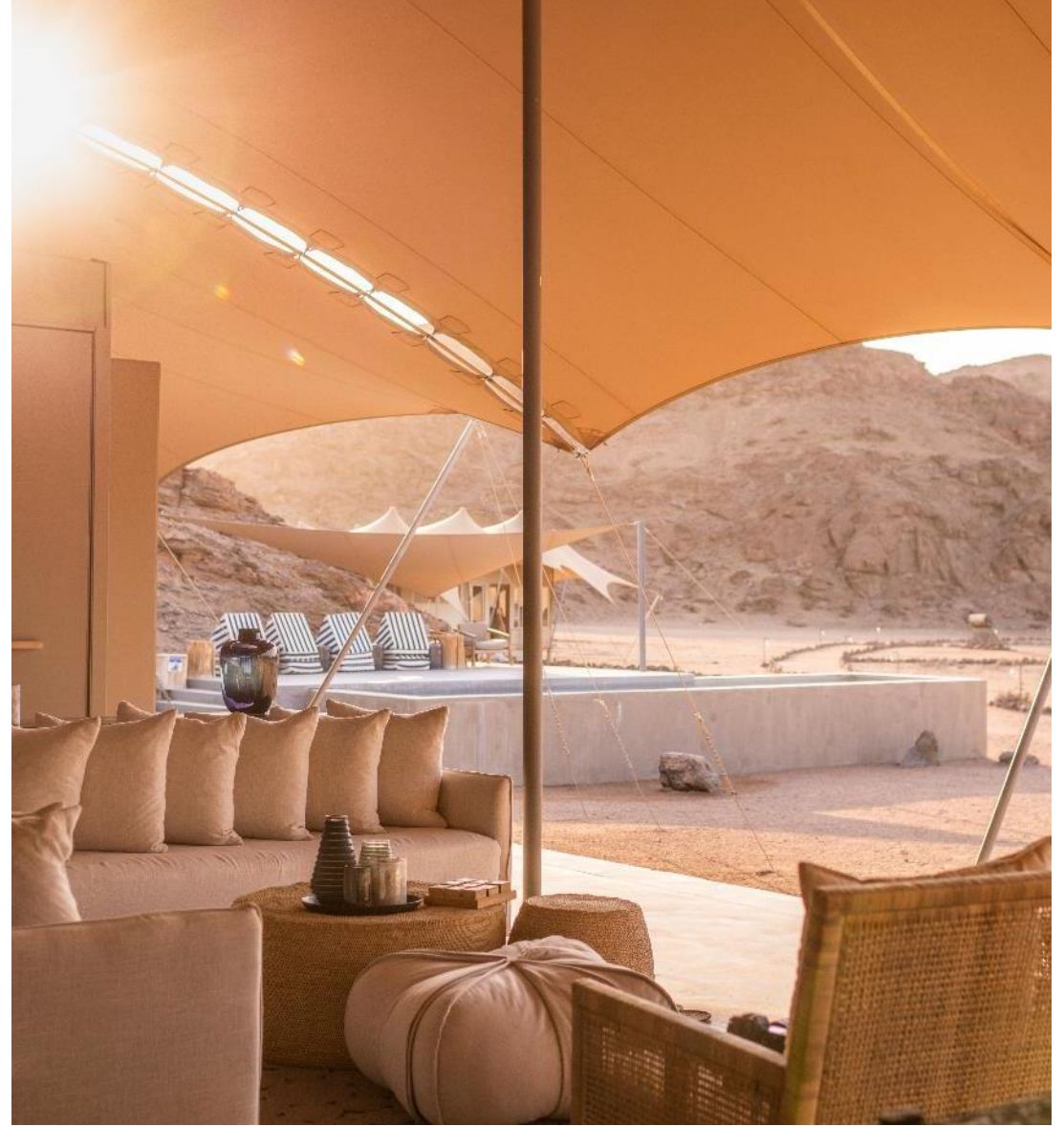


VIEW OF TENTED GUEST SUITE





MAIN AREA LOUNGE



MAIN LOUNGE





TENTED SUITE DECK



BEDROOM AND BATHROOM

# THANK YOU

[HOME](#)

[BISATE](#)

[DUMATAU](#)

[HOANIB](#)

[LINKWASHA](#)

[MOMBO](#)

[MOKETE](#)

[USAWA](#)



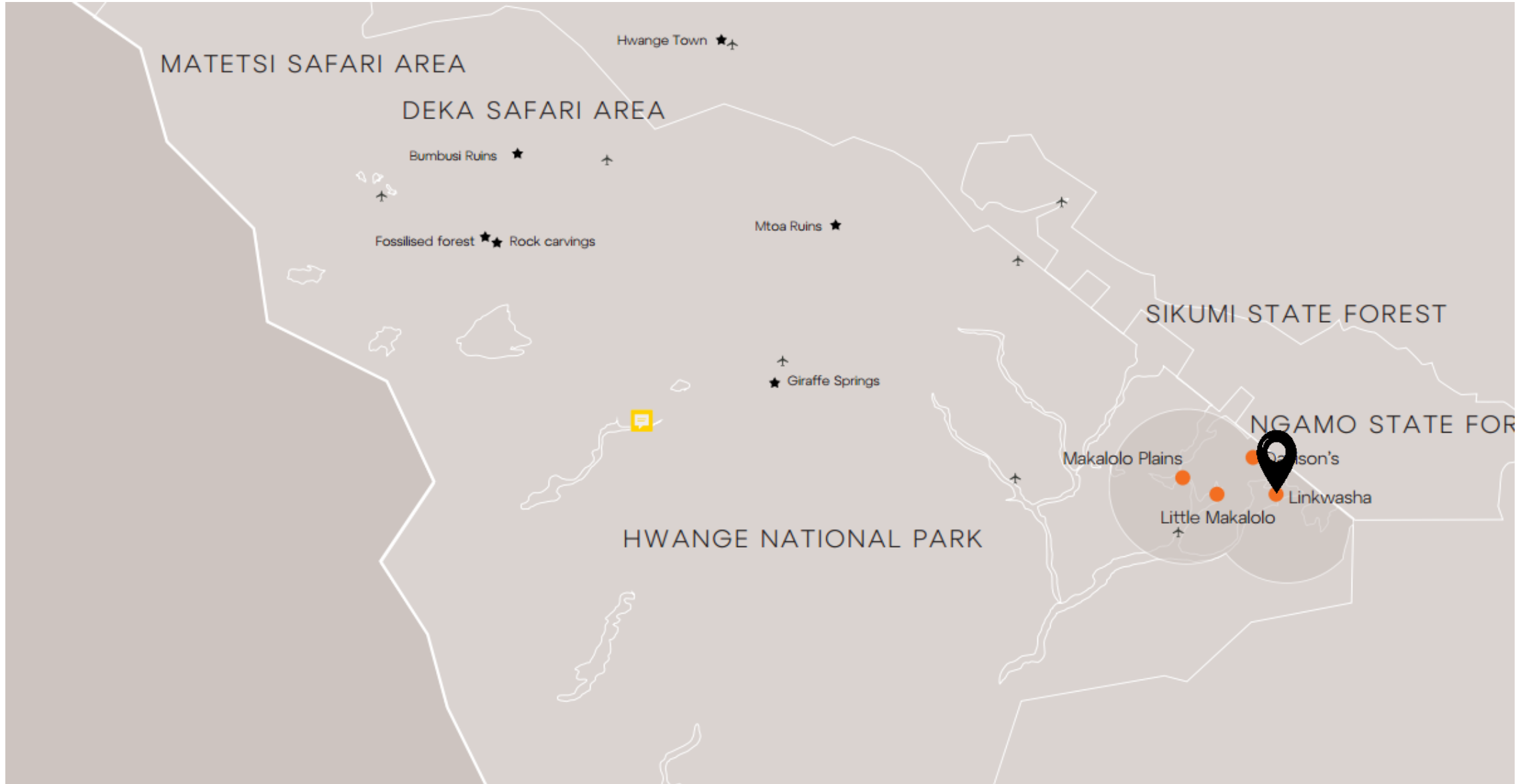
WILDERNESS



04

# Linkwasha

HWANGE NP, ZIMBABWE



UNIQUE SELLING POINTS

# Linkwasha

- Set on the edge of the famed Ngamo Plains, where large herds of plains game are regularly followed by their predators – including lions, cheetahs and African wild dogs – all year round
- Due to the ecological diversity (vast, open palm-fringed plains, grasslands, acacia woodlands and teak forests) and fertile ground in the south-eastern corner of Hwange, as well as year-round access to water, the area is a wildlife magnet
- In winter, the waterholes – including the one in front of camp – teem with elephants and buffalos
- Access to the abundant Linkwasha-Makalolo Private Wilderness Area means Wilderness guests have exclusive access to 34,000 hectares (84,000 acres) of land





WILDERNESS

# About Linkwasha



9 tents  
(1 family)



Star Bed



Cultural  
excursions



Game drives



Guided walks



Sunken hide



WILDERNESS



LINKWASHA PURPOSE

# Impact across generations

Alongside our non-profit Children in the Wilderness, Linkwasha works closely with surrounding communities and schools to ensure that they benefit from conservation and sustainable tourism.

ACCOMMODATION

# An authentically African atmosphere

- The camp's nine expansive tented suites (including a family unit) each look out onto the camp's waterhole, and beyond onto a vast plain.
- An eclectic mix of contemporary interiors and Ndebele culture creates the convivial main area, where multi-level decks lead down to the camp's pool, a place to cool off in the midday heat. The water is also often enjoyed by the local elephants.



BUFFALO IN FRONT OF CAMP







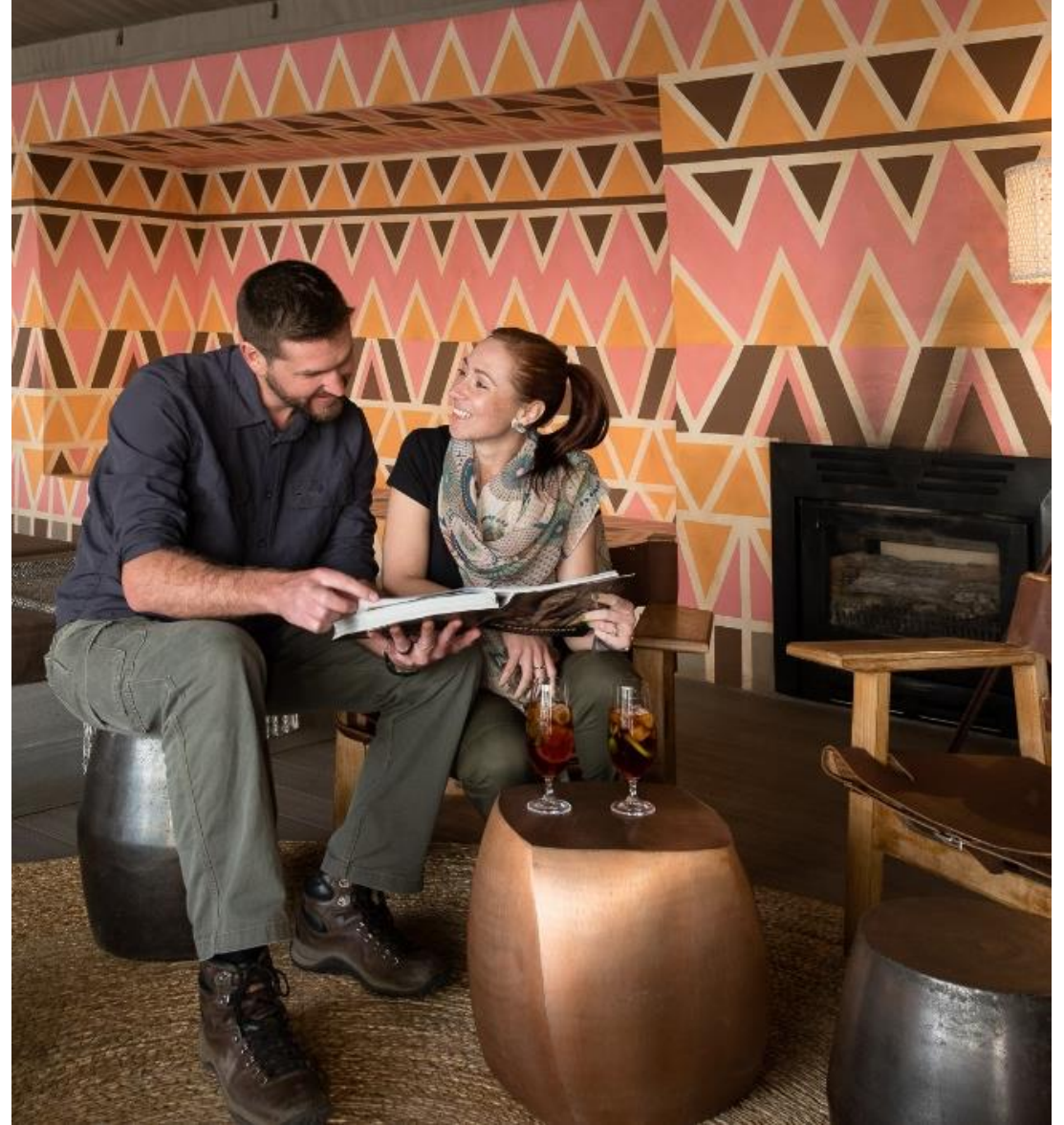






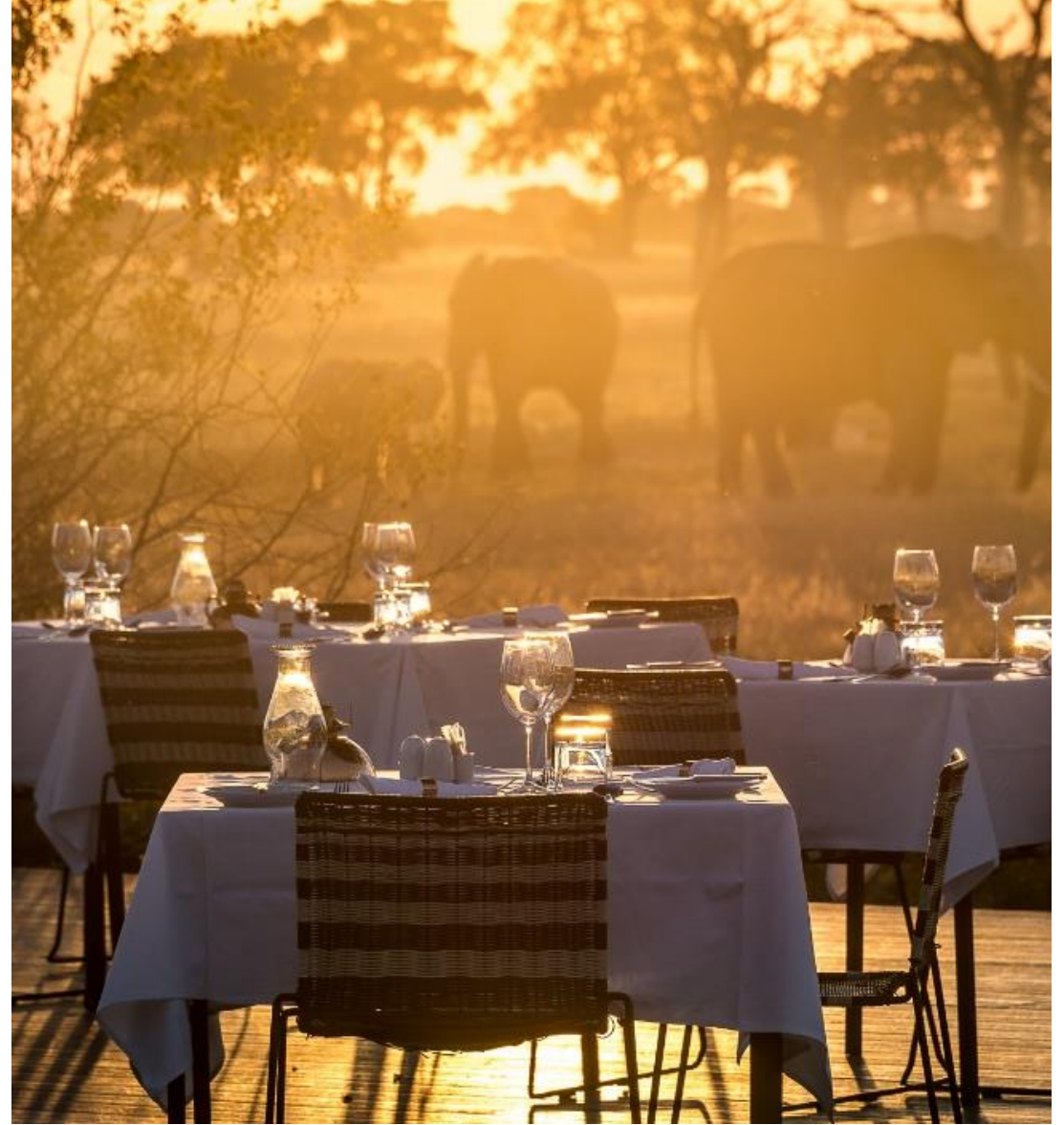








MAIN AREA



DINING COMPANIONS

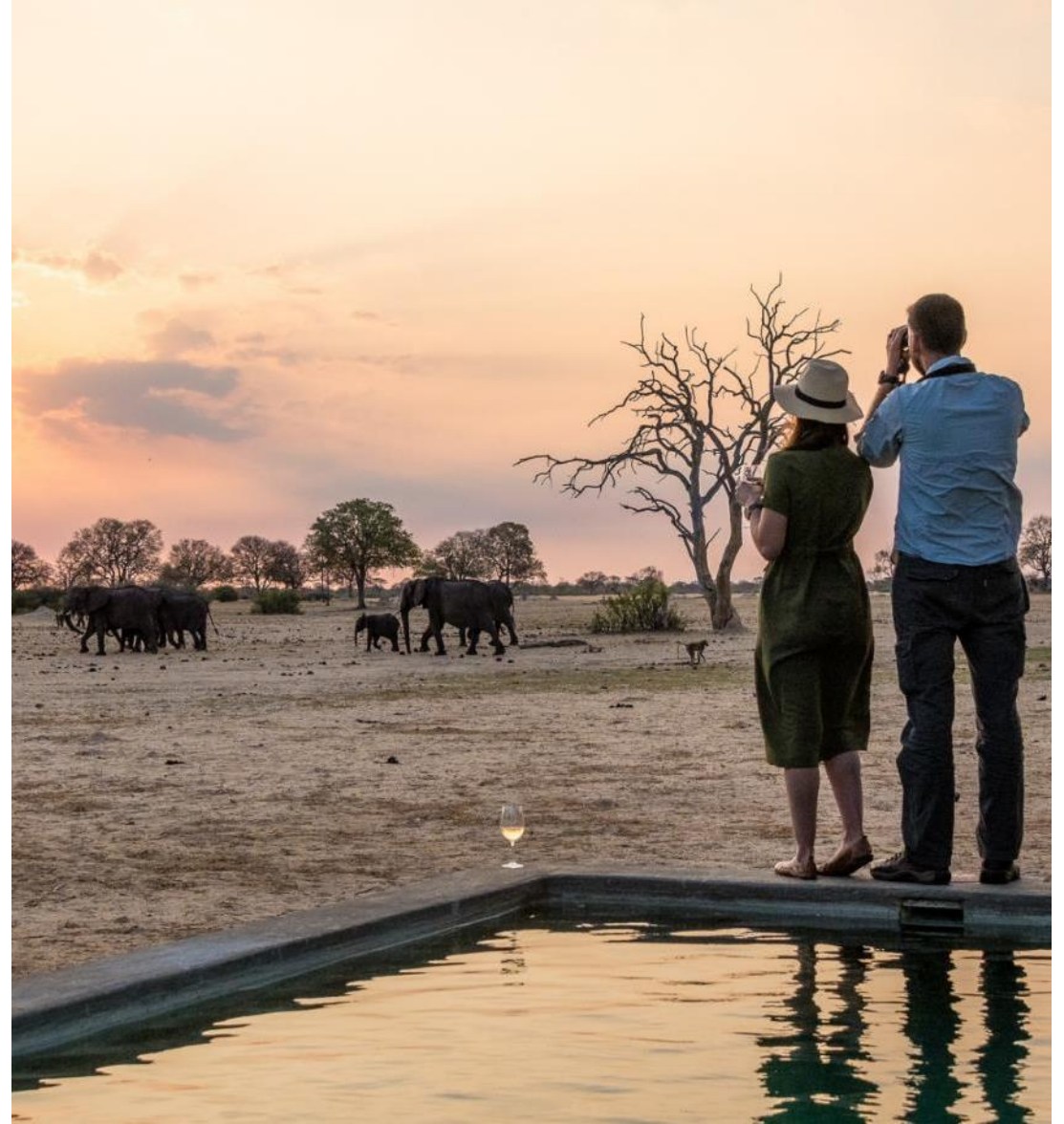


CAMP FIRE PIT



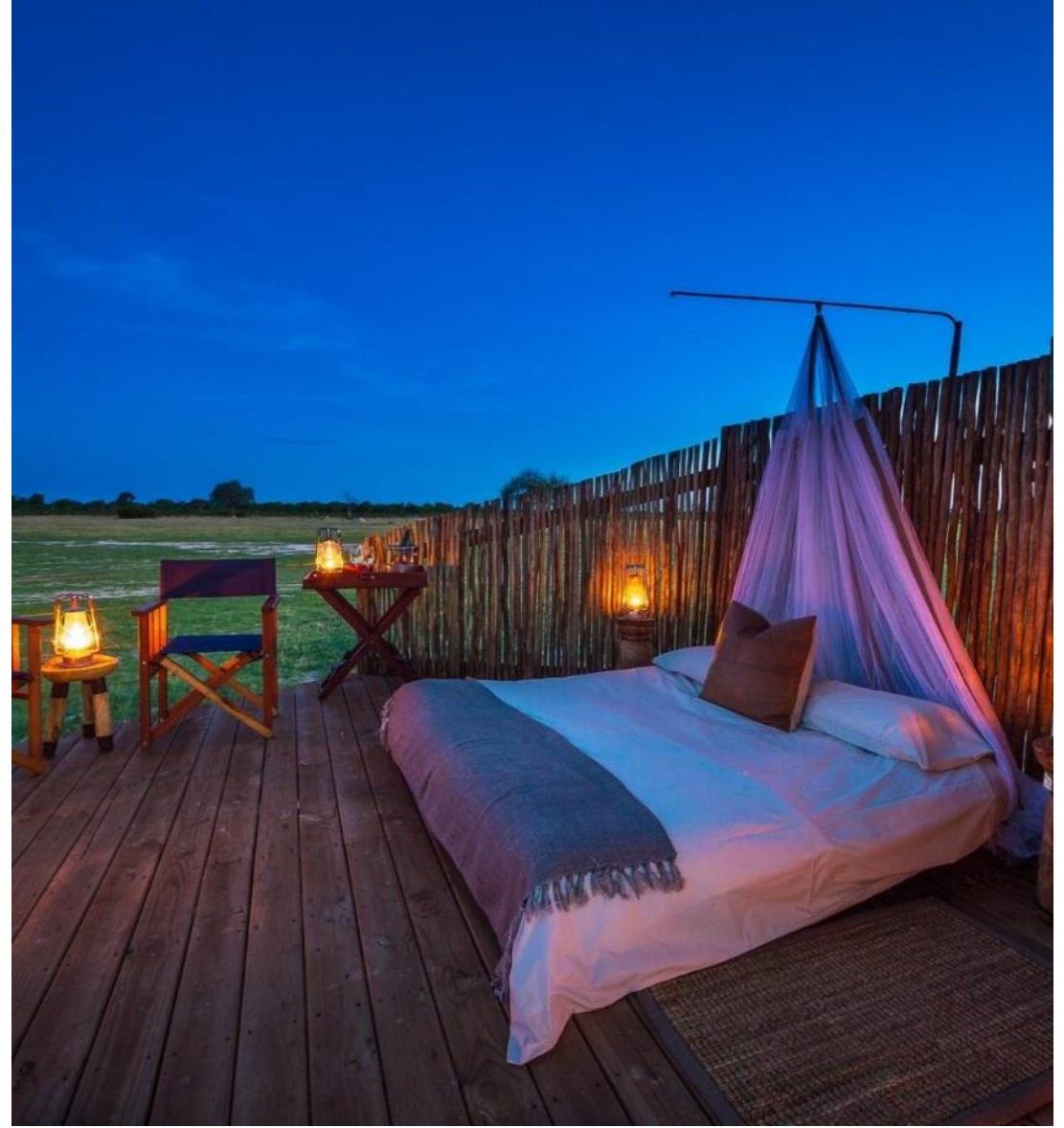
CAMP FIRE PIT

MAIN POOL



MAIN POOL VIEW

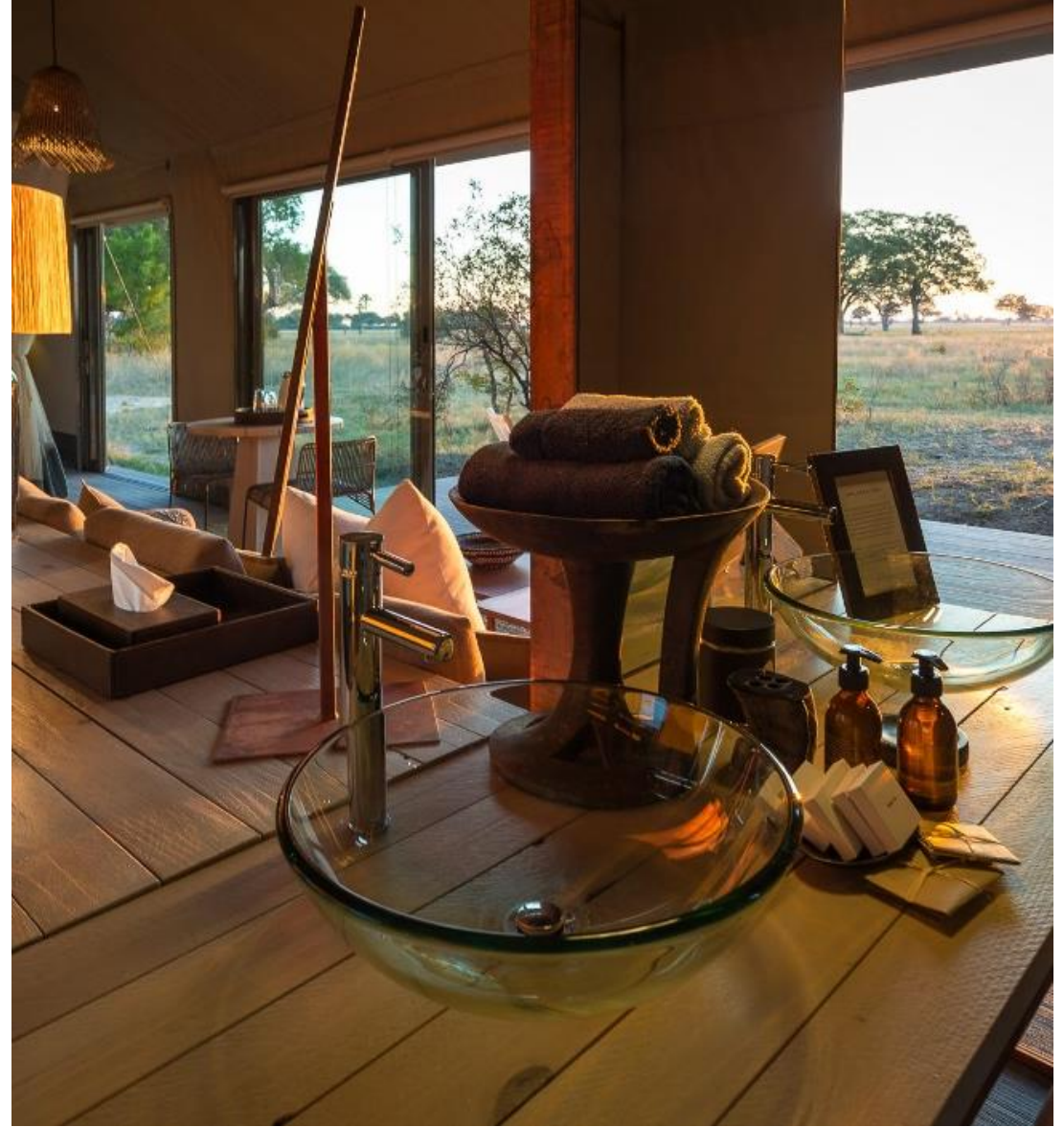
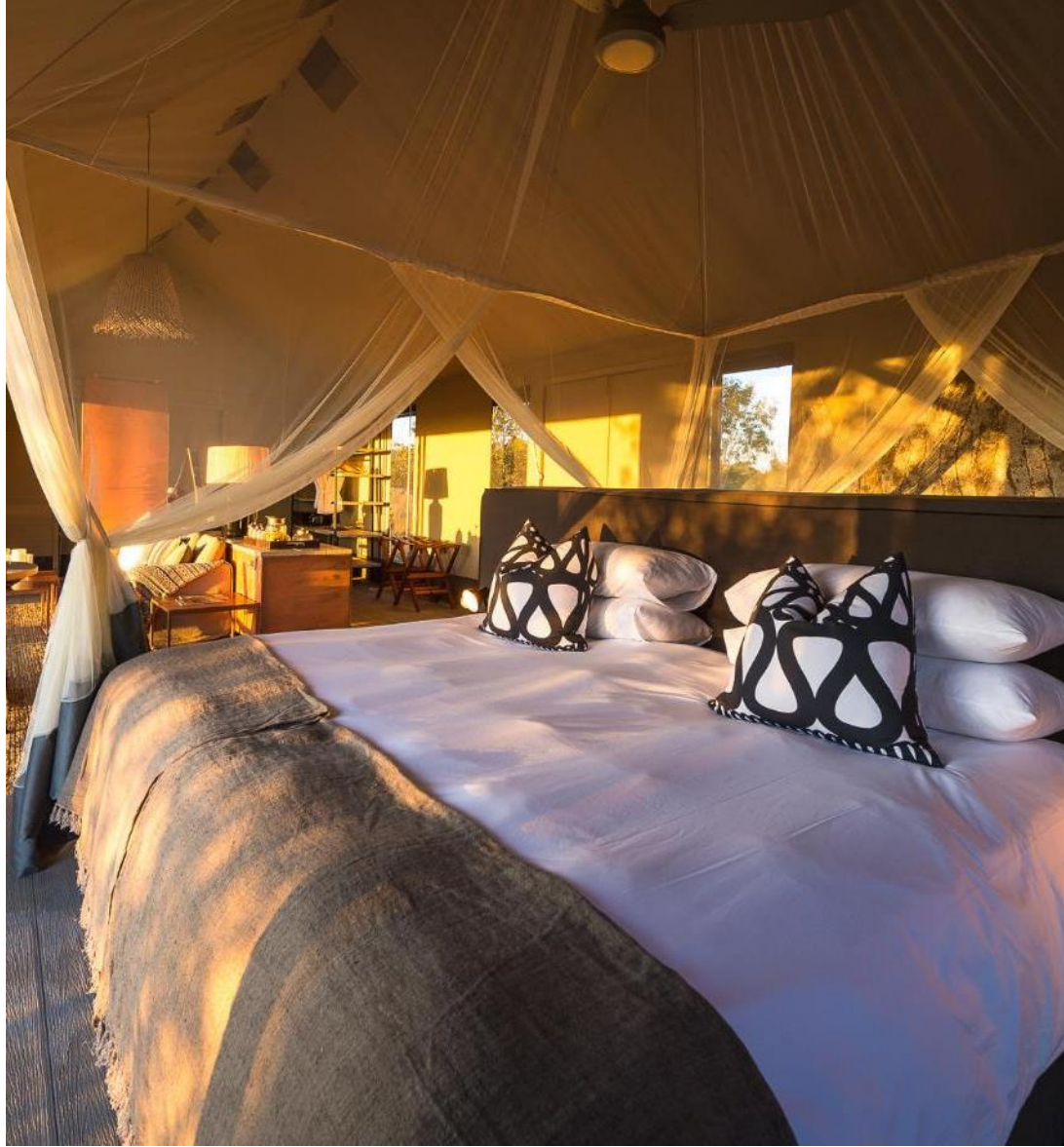








GUEST SUITE BEDROOM



BATHROOM

# THANK YOU

[HOME](#)

[BISATE](#)

[DUMATAU](#)

[HOANIB](#)

[LINKWASHA](#)

[MOMBO](#)

[MOKETE](#)

[USAWA](#)



WILDERNESS



# Mombo

OKAVANGO DELTA, BOTSWANA

05



UNIQUE SELLING POINTS

# Mombo and Little Mombo

- Arguably one of the **finest wildlife destinations in Africa**, and undoubtedly the best year-round game-viewing destination in Botswana.
- Situated just after the Okavango River splits into its primary channels. The nutrients deposited by the river make this the **most fertile area in the Delta**, attracting unusually high concentrations of plains game and their predators – dominated by the cats.
- **Private traversing** rights in the legendary Moremi Game Reserve,
- **Year-round abundance**. During the annual inundation, a natural seasonal containment of the wildlife is confined within this area. In summer the fertile plains teem with antelopes and their new-borns, attracting vast numbers of predators.





# About Mombo and Little Mombo



12 tents  
(1 family)



100% solar



Gym



Spa  
(extra cost)



Game drives



Hide



Helicopter flips



MOMBO PURPOSE

# A beacon of impactful tourism

Mombo is a beacon of conservation tourism. Its continued success over its decades of operation has helped bolster and support local communities, as well as the growth of sustainable safaris across all of Botswana.



## ACCOMMODATION

# Spacious wood and canvas suites

- Steeped in tribal history, all-new generations of the camp over the years have consistently celebrated the legendary original camp.
- Elevated on wooden decks under towering mangosteen and ebony trees, the supremely elegant tented accommodation offers endless views of the surrounding floodplains and wildlife.
- Families are welcome at Mombo, and there is a spacious family unit that offers complete privacy.









LION



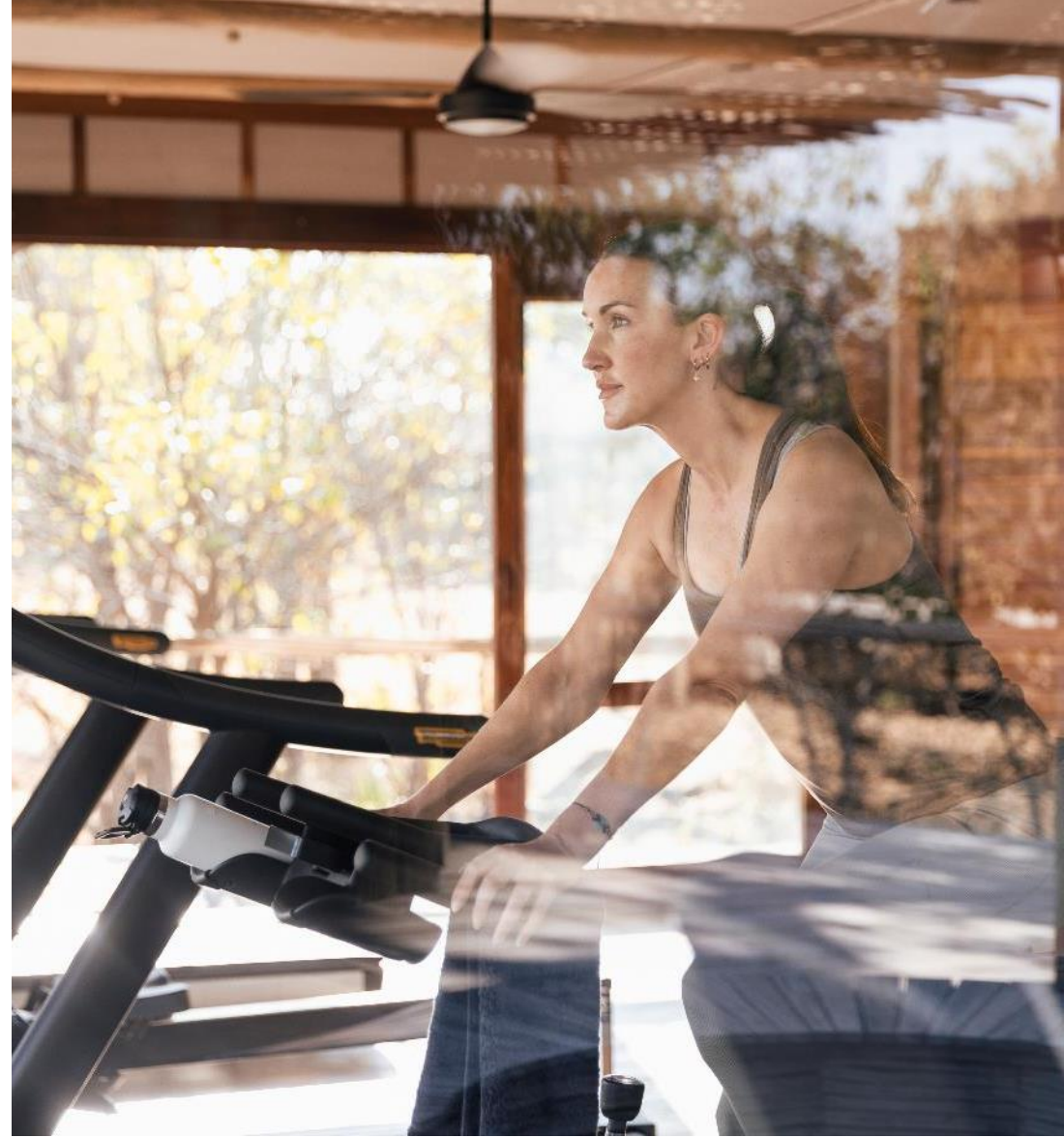
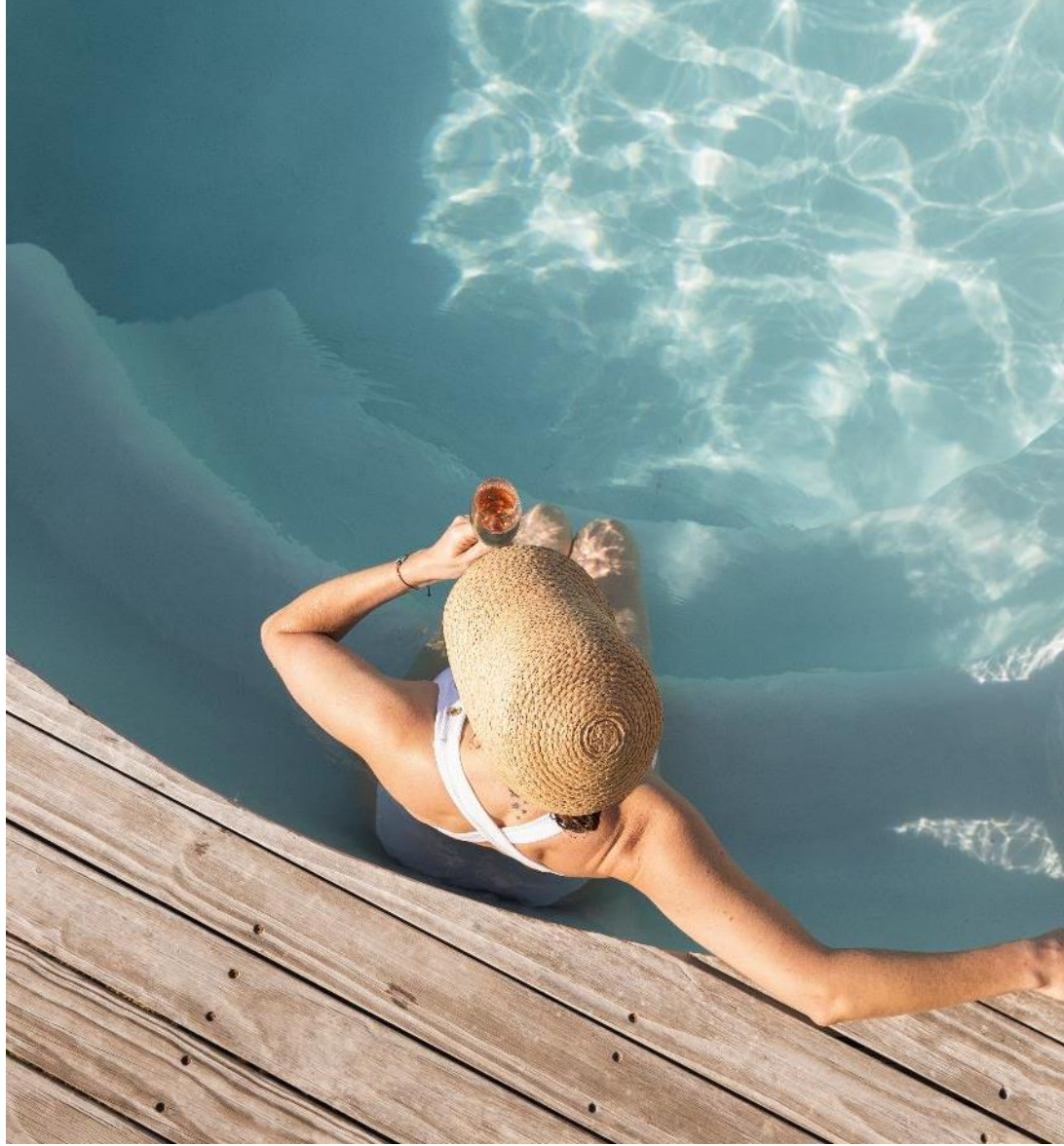
HYENA AND ZEBRA







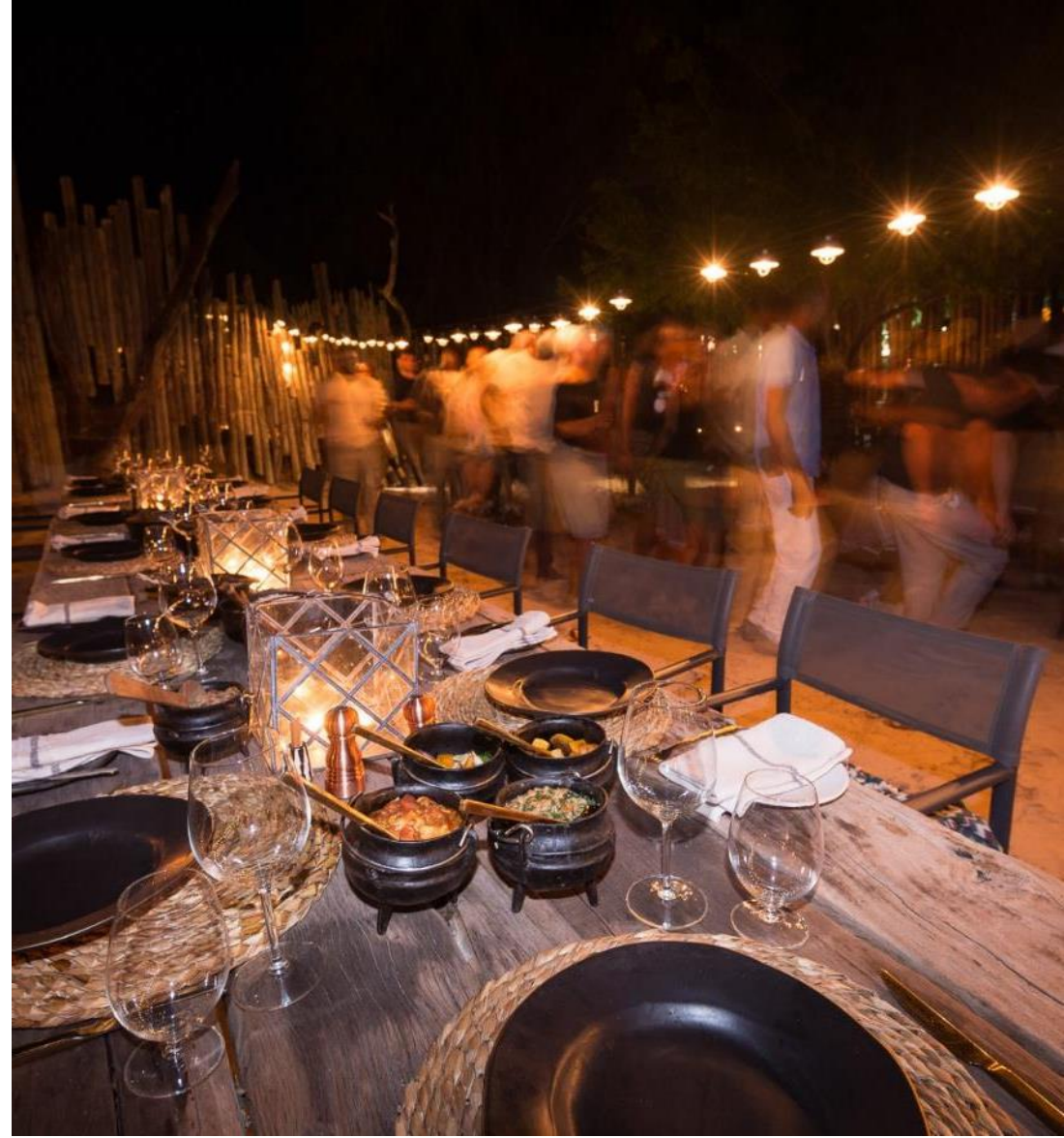
POOL



GYM

MAIN CAMP ENTRANCE

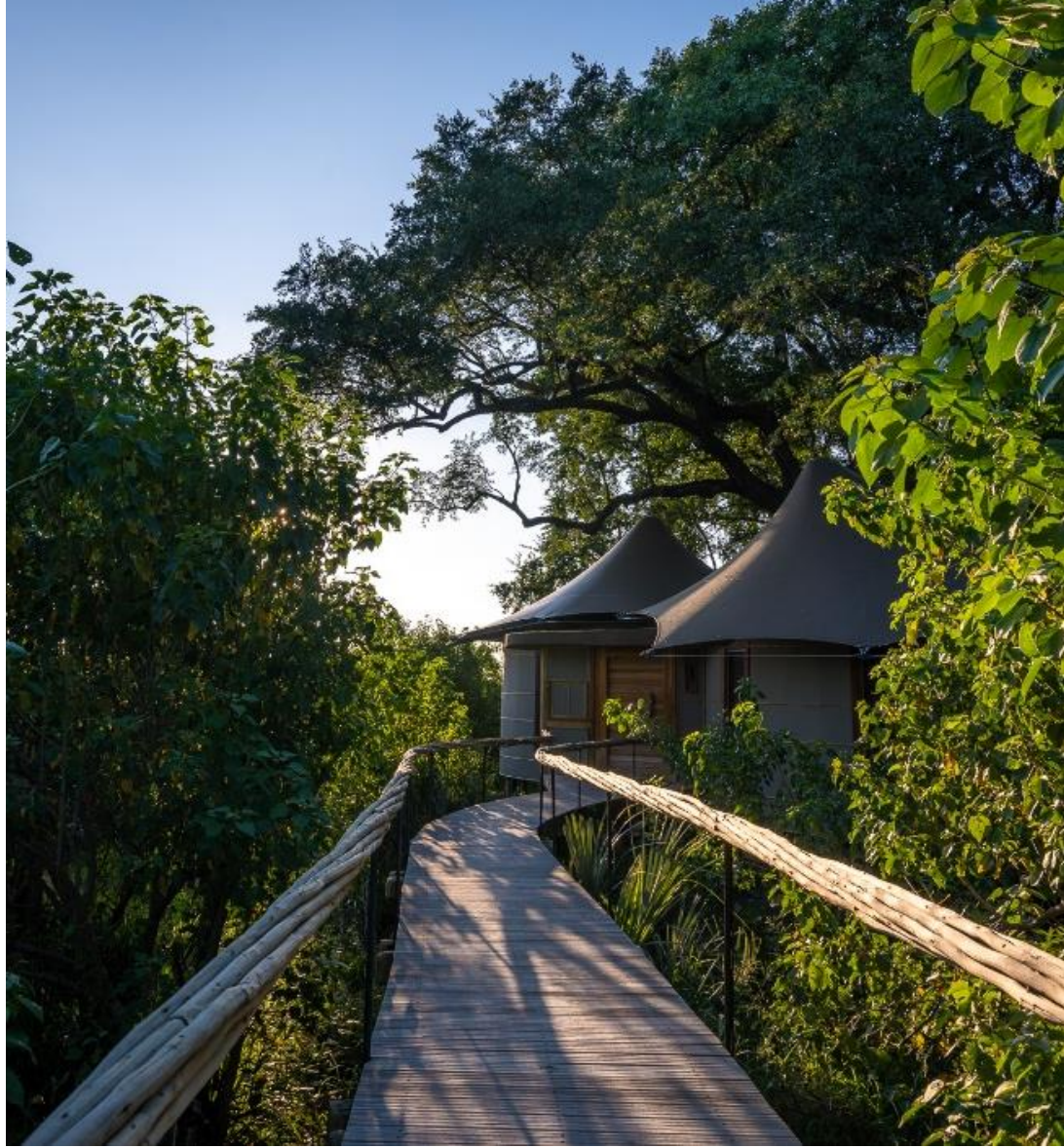




FIRE PIT IN CAMP



WALKWAY TO SUITE



PRIVATE SALA AT A GUEST SUITE



BEDROOM



BATHROOM







# THANK YOU

[HOME](#)

[BISATE](#)

[DUMATAU](#)

[HOANIB](#)

[LINKWASHA](#)

[MOMBO](#)

[MOKETE](#)

[USAWA](#)



WILDERNESS



06

WILDERNESS

# Mokete



# As wild as it gets

- An unexplored region, exclusive to Wilderness and a private concession area of over 50,000ha of land.
- A place where you can fly over the same herd of buffalos for a solid 10 minutes.
- A place where lions hunt in the open grassland throughout the day.
- A place where you will be dazzled by mega herds of zebra, migrating through the area in the summer months.

EXCLUSIVE HIGH VALUE PHOTOGRAPHIC ZONE

# Mababe



## GEOGRAPHIC SIZE

50,330ha of private wilderness area



## ACCESS

7-min helicopter access from Santawani airstrip  
Self-drive via Mababe village  
2024: New Mababe airstrip



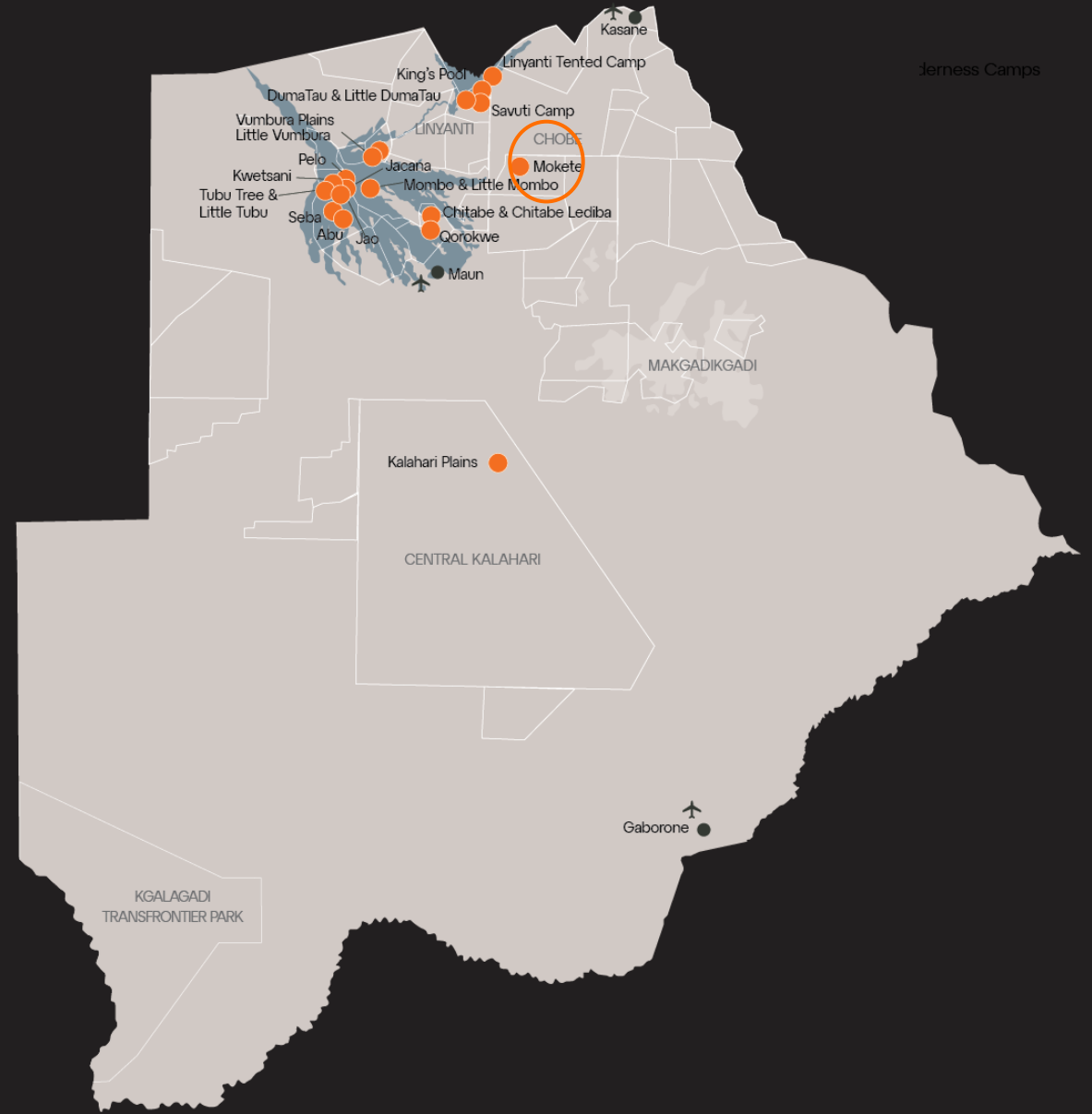
## LEASE TENURE

15 years with option to renew for another 15 years



## SELF-DRIVE DETAILS

Guests leave vehicles at Mababe village  
15:00 pick-up transfer | 11:00 departure transfer  
Convenient self-drive from Maun, Chobe and Moremi





## KEY HABITATS



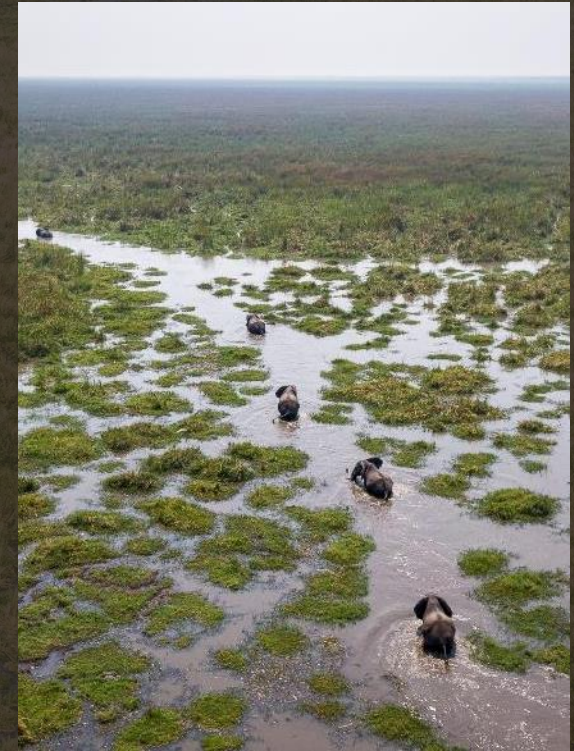
### Grassland

Open views comparable to the Mara in Kenya; acts as core grazing grounds for an extraordinary wealth of wildlife.



### Mopane woodland

A secure refuge for woodland birds and leopards, located in the south of the concession.

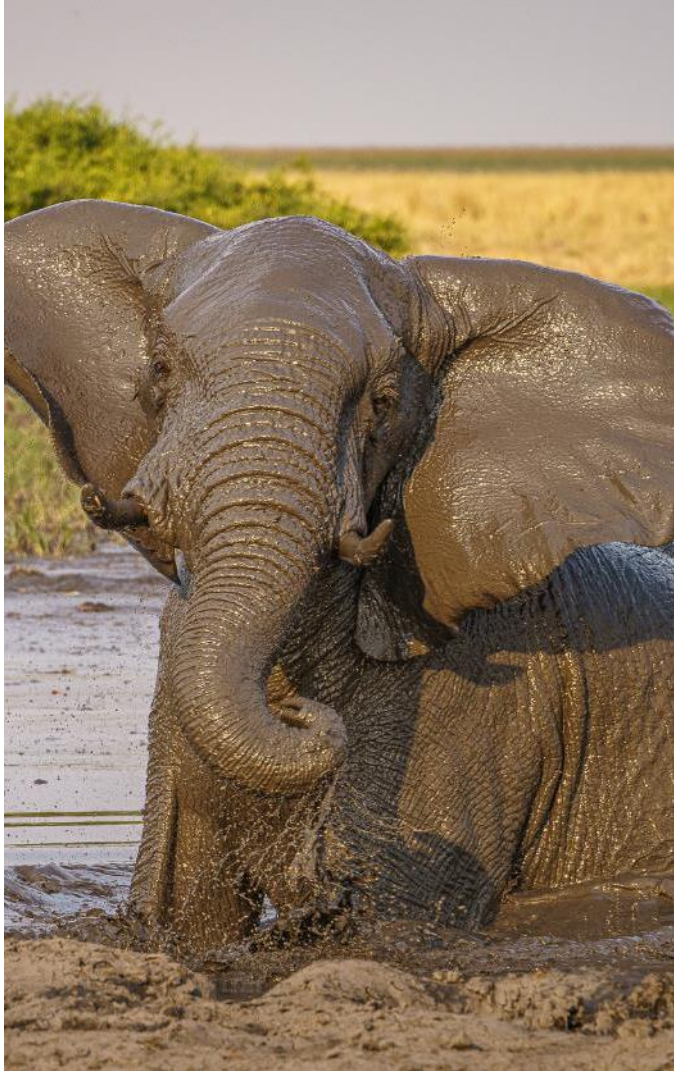


### Wetland

Permanent wetland all year around and a scarce water source for wildlife from miles around.

KEY WILDLIFE SPECIES

ELEPHANT, LION, BUFFALO



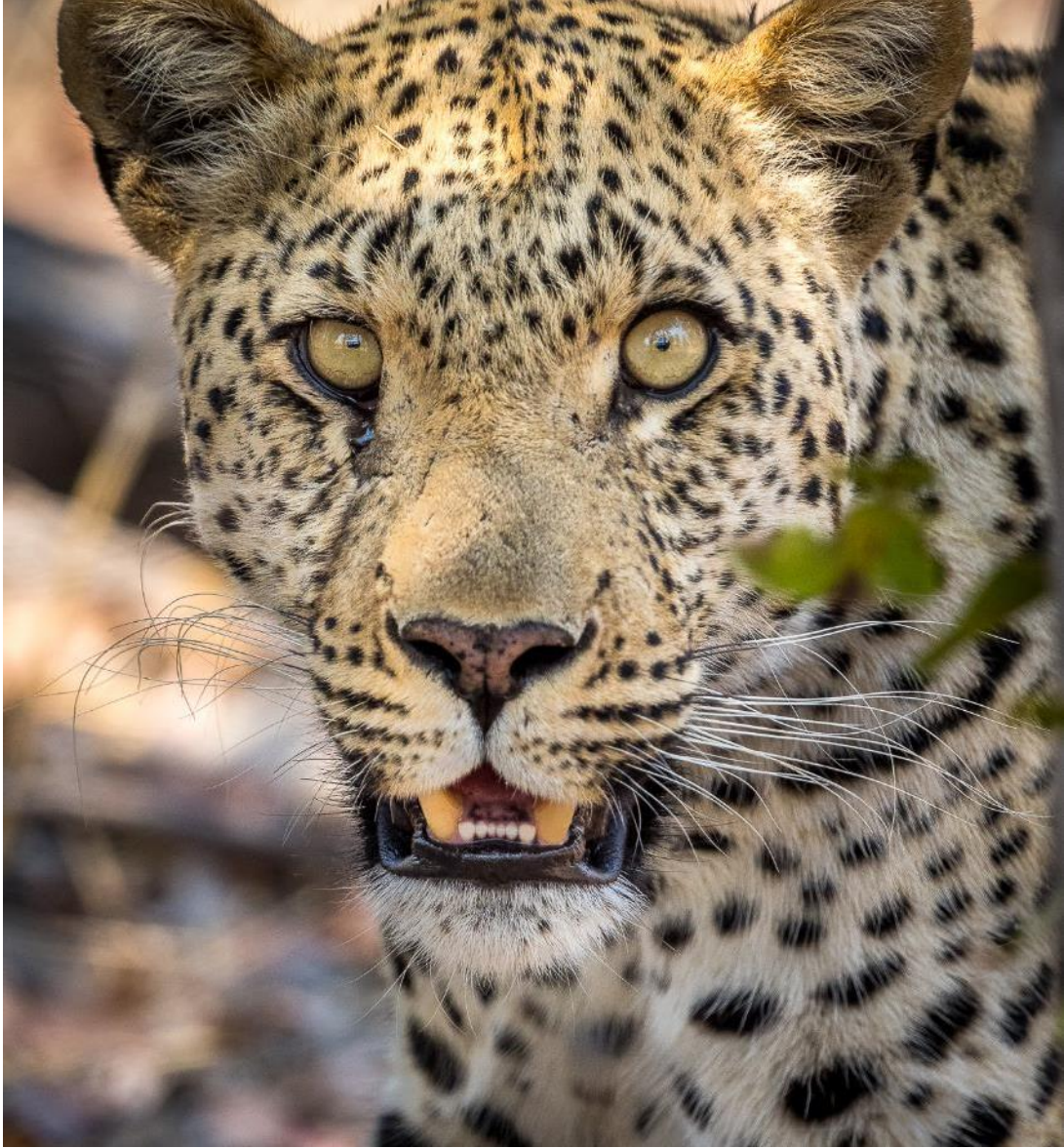


CHEETAH, SPOTTED HYENA



HIPPO, WILD DOG

LEOPARD



SIDE-STRIPED JACKAL





QUELEAS, KORI BUSTARD



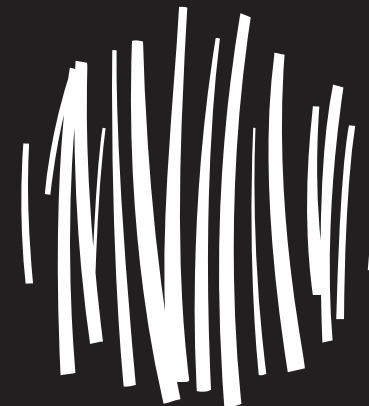
BLACK-WINGED KITE, SECRETARYBIRD

THE STORY BEHIND THE NAME

# What's in a name?

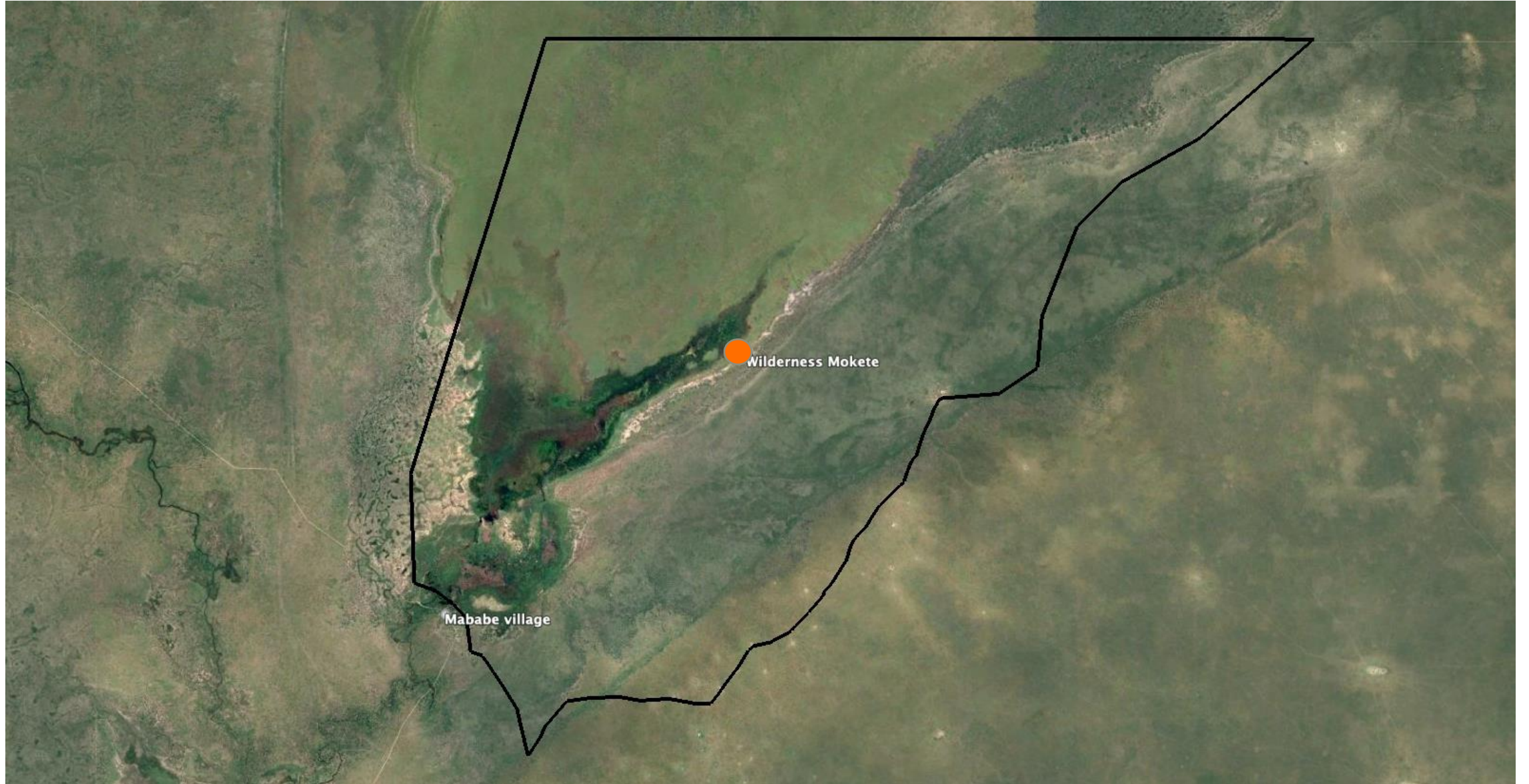
The name Mokete means feast or celebration in Setswana.

This place is a sensory feast of space, where few have ever ventured. A place just waiting to be celebrated and explored, its bountiful wildlife persistently pursued by predators. Your senses alive, your emotions heightened – feast on the wildness of it all at Mokete.



W I L D E R N E S S

M O K E T E



CAMP DETAILS

# Mokete



ALLOCATED BEDS

18



ALLOCATED VEHICLES

4



MINIMUM AGE

16



OPENING DATE

October 2023



ACCESS

Year 1, helicopter and self-drive only  
Year 2, airstrip location 7 km from camp  
self-drive from Maun, Moremi National  
Chobe National Park





UNIQUE SELLING POINTS

# Mokete

- A visceral Botswana safari experience, with undoubtedly the best viewing of mega herd aggregations and exceptional predator-prey interaction.
- This is due to its prime position in an exclusive wildlife area just east of the Okavango Delta and south of Chobe National Park. Home to a distal lake, Mokete is the closest to water for hundreds of miles to the east, north and south, drawing wildlife to the permanent water source and nutritious grassland of the Mababe Depression.



MOKETE

# Activities



Game drives  
(night & day,  
all day on  
request)



Sunken hide



Sleep-out  
(from 2024)



Helicopter scenic  
flights  
(extra cost)



Guided  
nature walks



Community visit  
Mababe village  
(from 2024)



Hot air ballooning  
(Apr to Sep at extra  
cost from 2024)

KEY FACTS

# Mokete

OPENS EARLY 2024, CLOSES 01 APRIL 2026

- Mokete is a temporary luxury camp situated along the marsh wetland, creating the perfect opportunity for guests to enjoy the intense wildlife experience in a camp close to the Earth.
- The guest tents will be on low wooden decks, while the main area will be on a 1 m raised wooden deck.
- Intentionally minimalist, the camp has a light footprint (including full solar) yet ensures luxury and comfort.
- Dine under the stars while enjoying delicious meals and first-class service.
- Structures will be incorporated for back-of-house once development is completed.





MOKETE PURPOSE

# A purposeful build

Through high-value, low-impact photographic tourism, we aim to help conserve the crucial ecosystem area of the best-conserved distal lake of the Okavango, the Mababe, a unique wildlife sanctuary. Wildlife aside, this area is worth protecting for the birds alone. Recognised as an Important Bird Area, there are great numbers of buzzards, falcons, owls, eagles and vultures. Mokete is intentionally minimalist, ensuring the lightest footprint.



WILDERNESS MOKETE



Communal pool area in  
main camp



100% solar powered



9 tents, 18 beds. No family  
unit.



Wi-Fi available in rooms



Spot-cooling systems in all  
bedrooms.





MAIN AREA POOL









# THANK YOU

[HOME](#)

[BISATE](#)

[DUMATAU](#)

[HOANIB](#)

[LINKWASHA](#)

[MOMBO](#)

[MOKETE](#)

[USAWA](#)



WILDERNESS



THE NEW CAMP

# Wilderness Usawa Serengeti

07

# Serengeti National Park

## QUICK FACTS:



### GEOGRAPHIC SIZE

+/- 15,000 sq. km



### ACCESS

Nearest airstrip to the camp



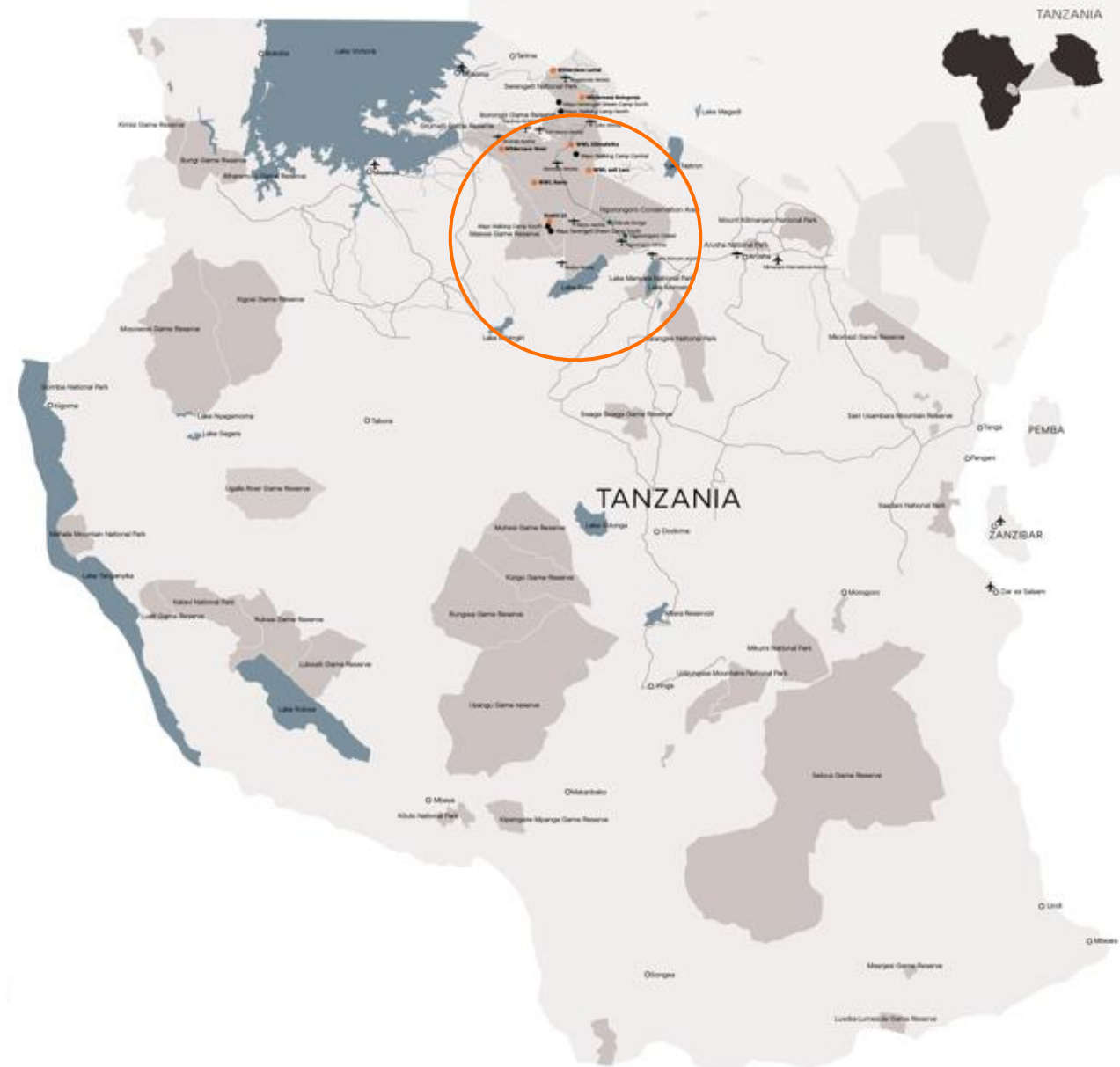
### BIRDLIFE

Around 500 species



### LION POPULATION

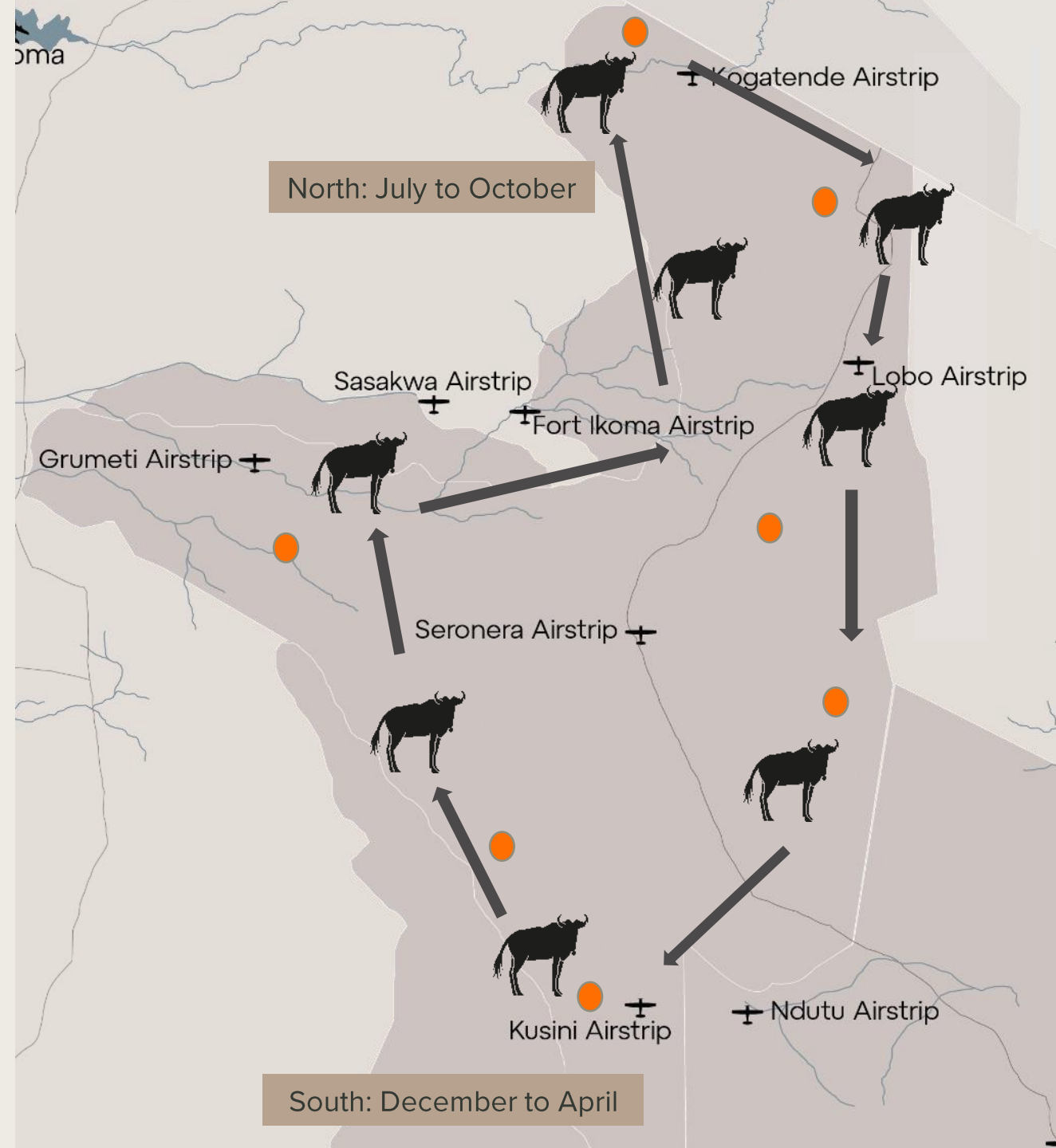
Around 3,000 animals



THE LARGEST HERD MOVEMENT ON EARTH

# Africa's greatest spectacle

- The Great Migration is the **largest herd movement of animals on Earth**, Africa's greatest spectacle.
- **Two million wildebeest, zebra, Thomson's gazelle, topi and other herbivores** move across the Serengeti-Mara ecosystem in search of nutritious grazing grounds and water.
- **Traversing the breadth of the plains** here, the animals focus intently on heading to the north of the park; they then take the long journey back south again, breeding and birthing along the way.
- More than **300,000 births** and **dozens of death-defying river crossings** mean constant predator-prey interaction on the Serengeti's plains – providing a banquet for lions, hyenas and crocodiles.



# KEY HABITATS



## Acacia woodlands

Secure habitat for smaller predators and birds



## Rock kopjes

Distinctive rocky outcrops favoured by lions, used as vantage points over the plains



## Open savannah

Vital grazing for migratory plains game

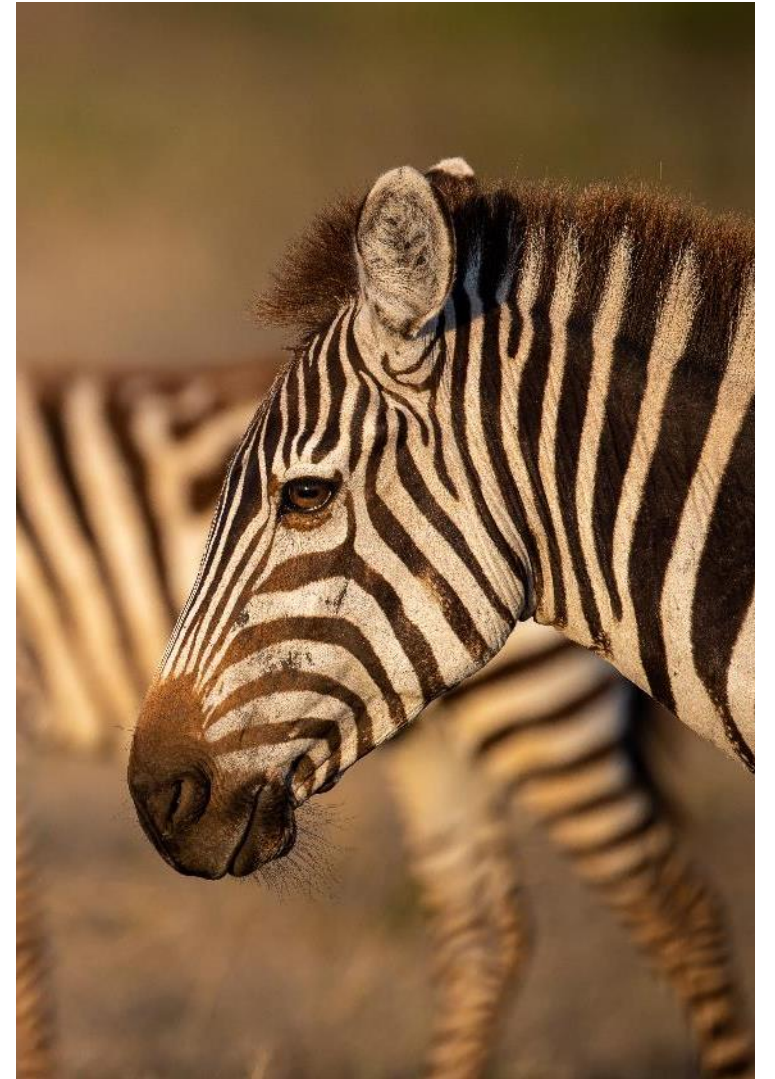


## Riverine forest

Dense forests of evergreen trees along the few rivers

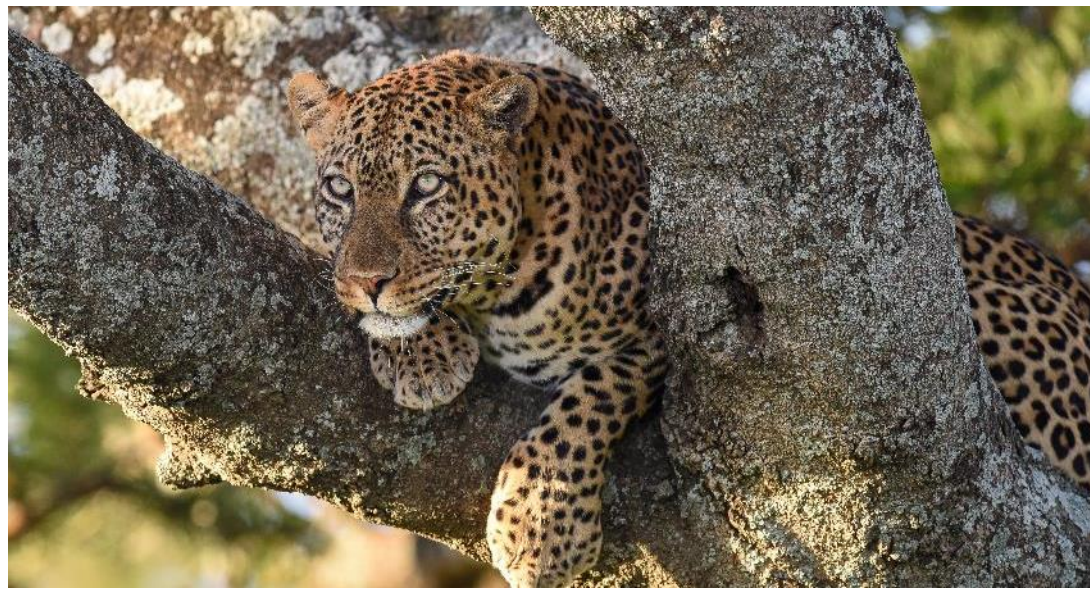
# KEY WILDLIFE SPECIES

BLUE WILDEBEEST, LION, ZEBRA



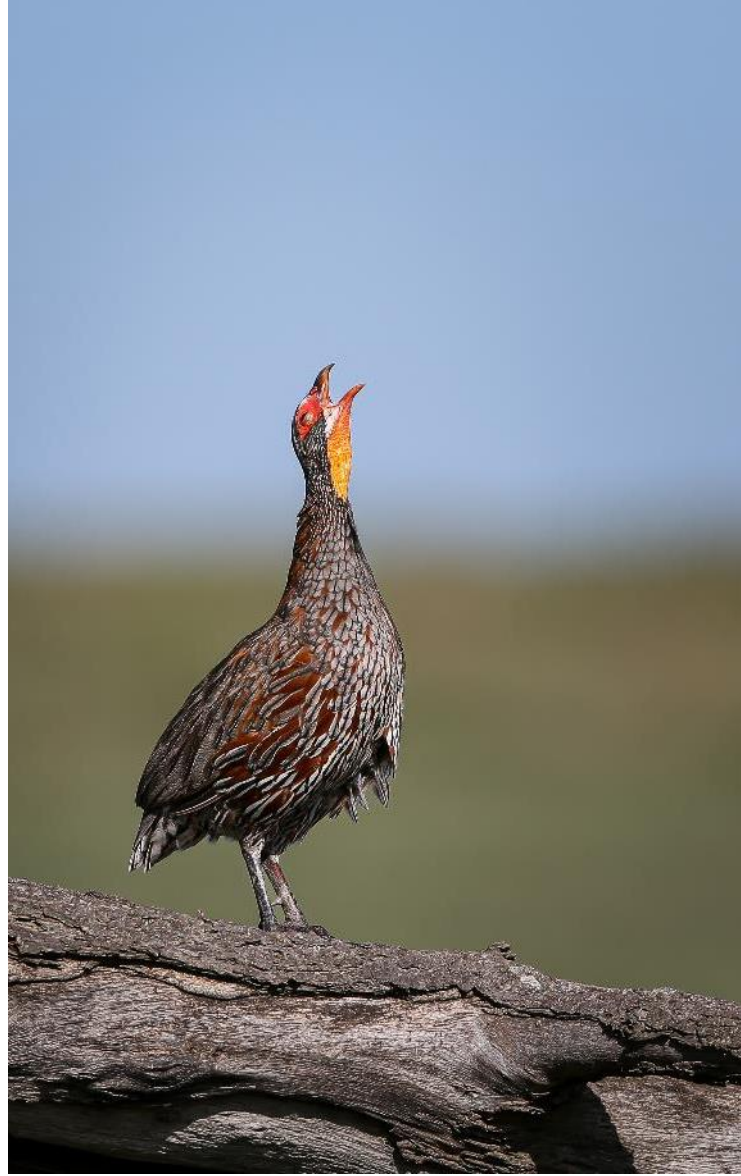


BAT-EARED FOX, BLACK-BACKED JACKAL



LEOPARD, MASAI GIRAFFE

HOODED VULTURE, WHITE STORK,  
YELLOW-NECKED SPURFOWL



# What's in a name?

Usawa means balance in Kiswahili. It is this balance that makes the Serengeti the most intact ecosystem on the planet. From the dung beetle that fertilises the soil to the topi feeding in the valleys, to the millions of migrating herbivores, and all the predators who depend on these herds. Every species lives in perfect balance with the species beside it, to ensure that this phenomenal ecosystem functions as a single organism.

Wilderness Usawa Serengeti is far from the crowds yet close to the action.



W I L D E R N E S S

USAWA SERENGETI

CAMP DETAILS

# Wilderness Usawa Serengeti



**ALLOCATED BEDS**

12



**ALLOCATED VEHICLES**

4



**MINIMUM AGE**

12



**OPENING DATE**

1st camp opens in mid-July 2023

2nd camp opens end of September 2023



**ACCESS**

Into nearest airstrip to the camp



UNIQUE SELLING POINTS

# Usawa Serengeti

- Near the migratory herds but set **away from the high-density tourist spots**.
- The tented camp's exquisite design and mindful décor add a thought-provoking aspect to guests' already **very remote and private East African experience**.
- The flexibility of our luxurious Wilderness Usawa Serengeti camp:
  - Allows us to move at short notice between our nine campsites situated at crucial migration intersection points within Serengeti National Park.
  - This guarantees guests are at the heart of the drama and in the best locations to experience the Great Migration, following the ever-moving mega-herds.



USAWA SERENGETI

# Activities



Game drives  
morning and  
afternoon only;  
all day on  
request



Star gazing



Guided  
nature walks  
(minimum age  
11)



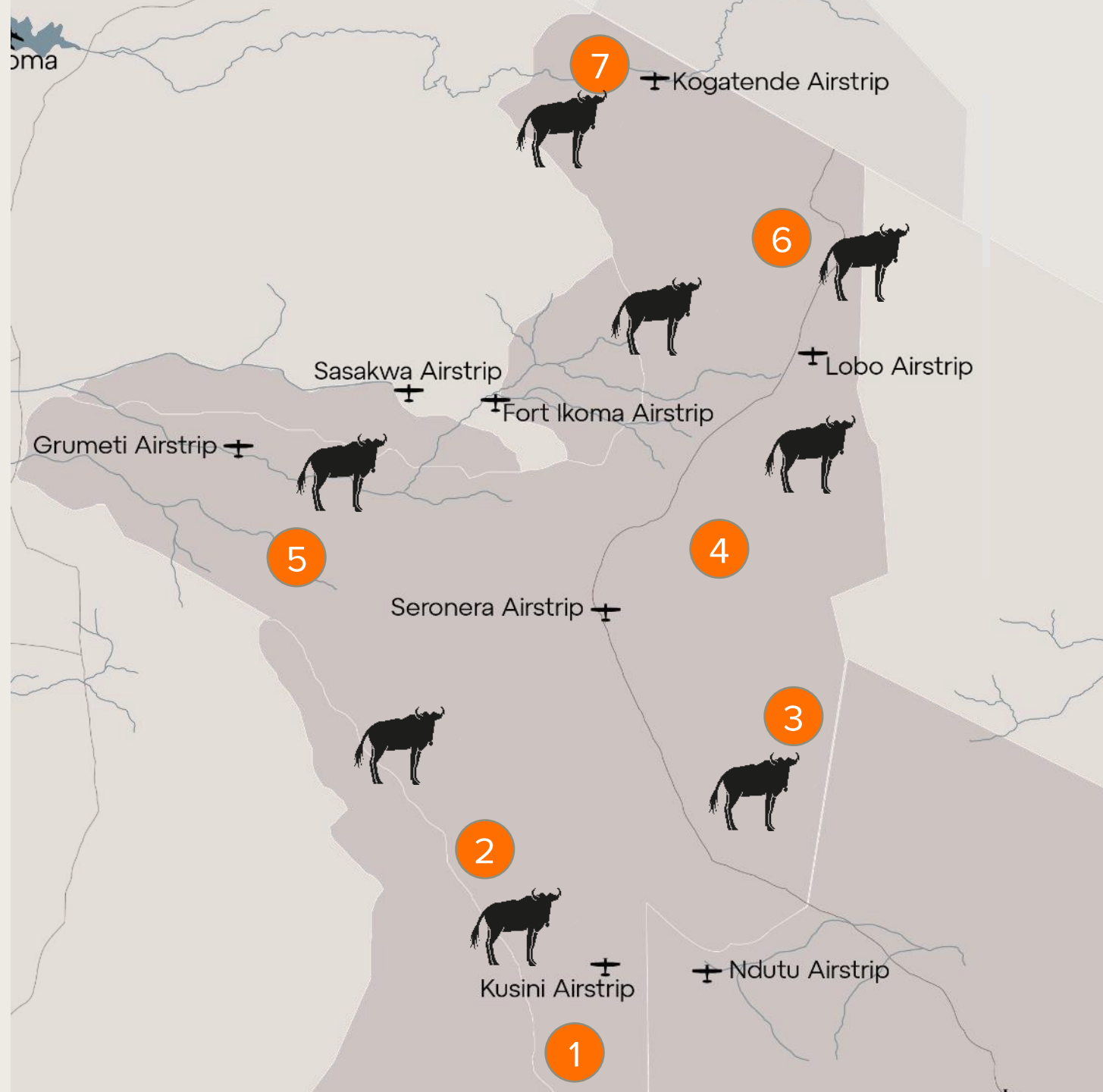
Birding



THE LARGEST HERD MOVEMENT ON EARTH

# Camp locations

1. Kusini (south): December to March
2. Moru West Area (central/south): December to May
3. Ngarenanyuki/Gol Kopje area (east): February to March
4. Kilimafetha Area (central): June to July
5. Grumeti (west): May to July
6. Bologonja (north): July to November
7. Lamai (north) July to November





USAWA SERENGETI PURPOSE

# Uplifting the community

Wilderness is proud to note that through formal training programmes for underprivileged children and by educating and upskilling the community, it empowers local residents to reduce their reliance on poaching, snaring and cutting down trees. By working with the authorities and other local partners, Wilderness strives to help protect the phenomenal natural areas of Serengeti National Park.





ACCOMMODATION

# Intimate and authentic

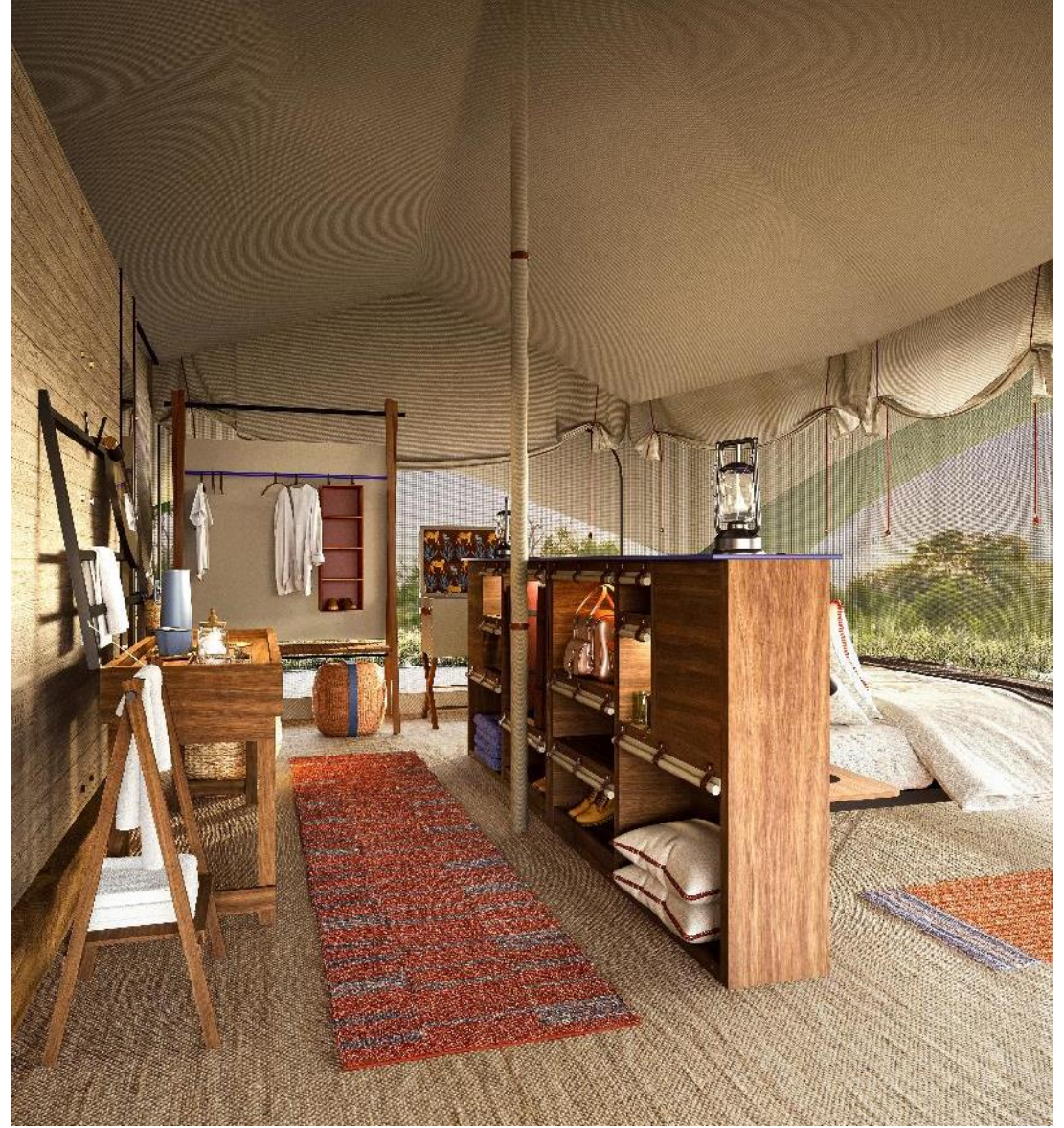
With open-plan tents and with view-facing beds, Wilderness Usawa Serengeti is an intimate, authentic tented camp, offering the thrill of an immersive tented experience in pristine wilderness settings without forfeiting any of the comfort or luxury Wilderness guests are accustomed to.



ACCOMMODATION INTERIOR



ACCOMMODATION INTERIOR



BEDROOM

# Facilities



6 tents, 12 beds.  
No family unit.



100% solar powered



36m<sup>2</sup> (6m x 6m).



Charging stations available  
in the tented suites and  
main dining tents at all  
times



Generous rechargeable  
solar lights with no cables  
providing flexible  
positioning

# THANK YOU

[HOME](#)

[BISATE](#)

[DUMATAU](#)

[HOANIB](#)

[LINKWASHA](#)

[MOMBO](#)

[MOKETE](#)

[USAWA](#)



WILDERNESS