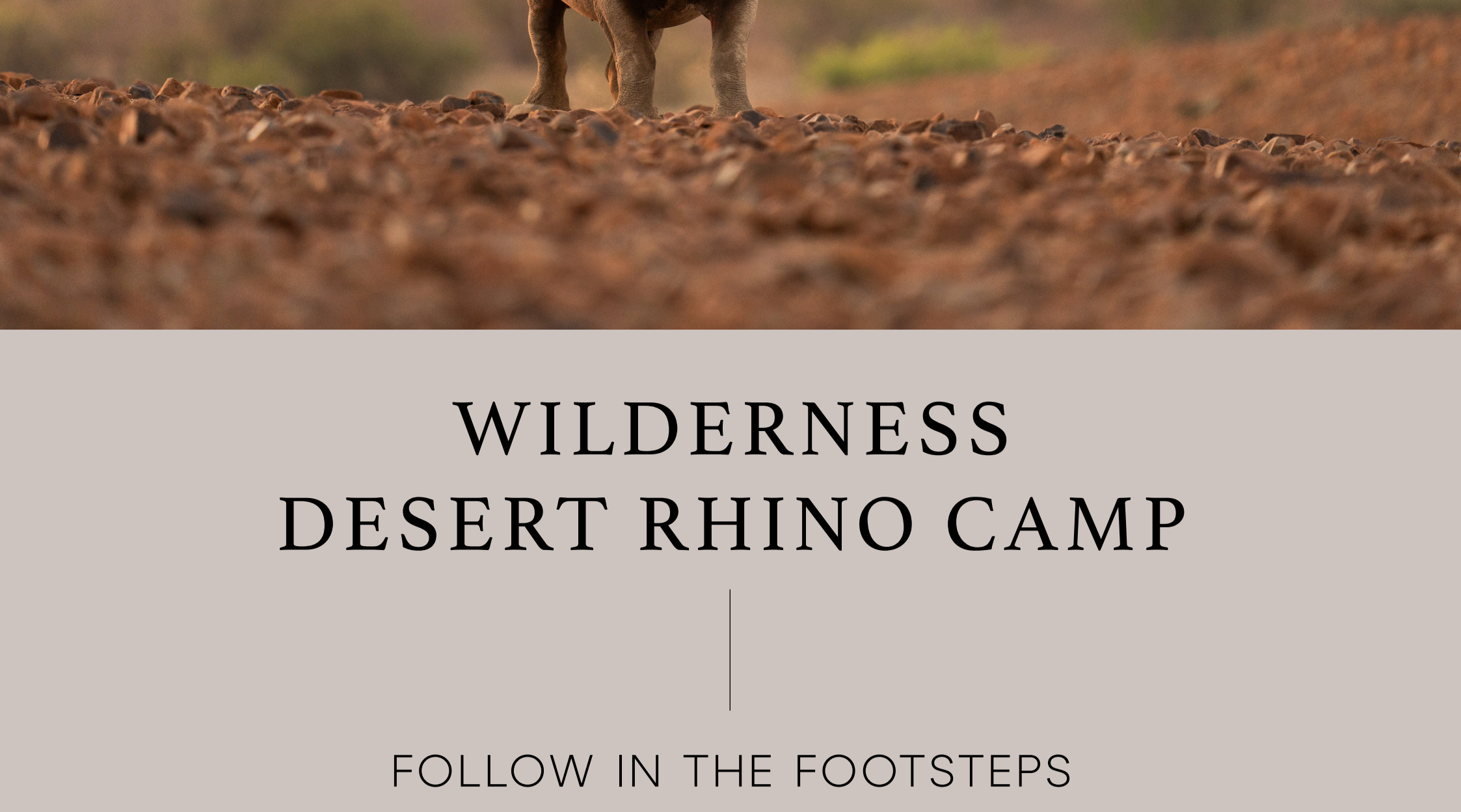




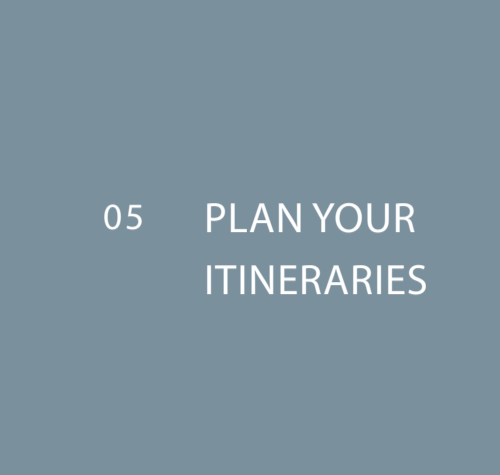
WILDERNESS



# WILDERNESS DESERT RHINO CAMP

## FOLLOW IN THE FOOTSTEPS OF DESERT-ADAPTED BLACK RHINO

Windswept cliffs. Rocky plateaus. Remarkable, resilient wildlife. A wild, desert landscape unlike anywhere on Earth, and a camp with profound purpose. The rugged beauty of Damaraland's Palmwag Concession sets the scene for an impactful journey, where Critically Endangered desert-adapted rhinos are at the centre of the experience.



Rebuilt and reinvented, the new Wilderness Desert Rhino Camp (DRC) is inspired by the desert, incorporating the palette, textures, and wildlife of Damaraland's extraordinary vistas into the elegantly upgraded tented suite interiors. Two decades ago, DRC began as a research base for protecting desert-adapted black rhinos. Today, DRC continues as a beacon of purpose-driven partnership

between local communities. Save the Rhino Trust Namibia (SRT), and Wilderness, remaining one of the best places to see these imperilled animals in their pristine natural habitat. The protection of extraordinary desert-adapted wildlife remains central to everything we do at DRC, including the design of the new camp, which is now even more inspired by and connected to this remarkable environment.

## CONTENTS

01 A REFUGE FOR RHINOS

02 RESILIENT DESERT WILDLIFE

03 DESERT ADVENTURES

04 WILDERNESS DESERT RHINO CAMP

05 PLAN YOUR ITINERARIES

06 TOOLKIT



## A REFUGE FOR RHINOS

In the heart of Damaraland, the varied terrain of the Palmwag Concession delights conservation-minded travellers attracted to this otherworldly region. Dramatic moonlike landscapes, flat-topped mountains, wind-sculpted sandstone cliffs, broad valleys and riverbeds make the Palmwag Concession one of Namibia's most unique safari destinations. In years of good rainfall, the seasonal riverbeds come to life and flow sporadically, and shimmering grasses blanket the vast open plains. In this starkly beautiful landscape, only the toughest survive. Our conservation efforts, and our voyageur guests, help them to do so. At Wilderness Desert Rhino Camp, we've partnered with three local community conservancies: Torra, Anabele and Sesfontein, along with SRT, to defend, preserve, and expand these iconic desert wilds. Here, the wildlife thrives once more, and tourism has become a key economic driver in the region. DRC also hosts two conservancy-based rhino rangers trained by SRT, who assist with rhino tracking and monitoring.



# 01

## RESILIENT DESERT WILDLIFE

Besides Africa's last remaining free-ranging populations of Critically Endangered black rhino, other wildlife find ways to live in this harsh environment. Desert-adapted elephants and giraffes follow the sporadically flowing river courses, where trees find life through the presence of underground water. Other wildlife includes Hartmann's mountain zebras, oryx (gemsbok), springbok and rare desert lions, spotted hyenas, cheetahs, and leopards.

### HABITATS

#### RIVERS

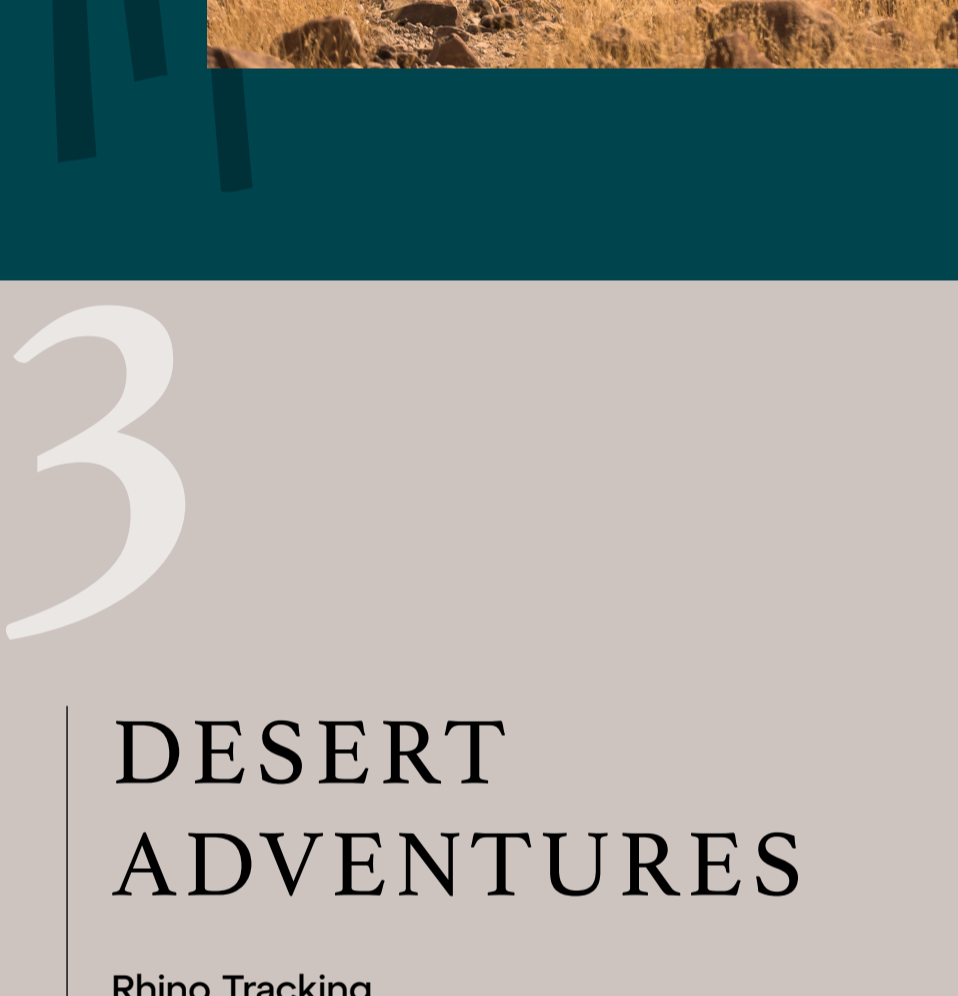
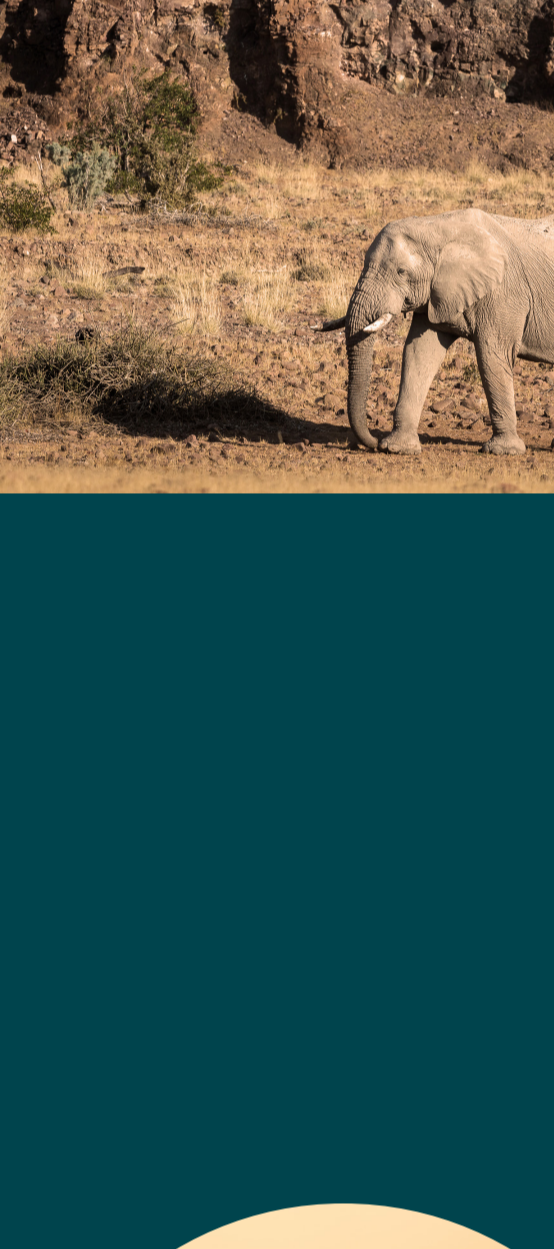
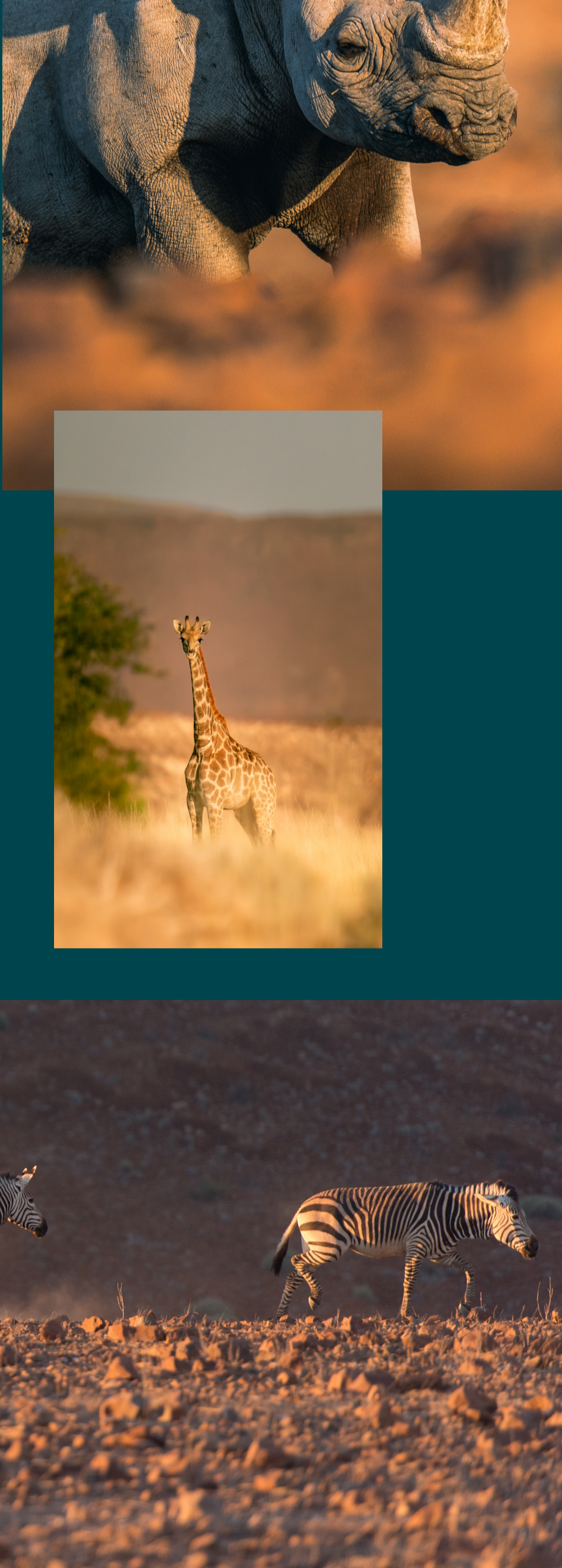
Ugab, Huab, and the Hoanib seasonal rivers.

#### MOUNTAINS

Etendekas and the Grootberg Massif

#### VALLEYS

Ancient valleys dating back millions of years, before the dinosaurs.



# 02

## DESERT ADVENTURES

### Rhino Tracking

Set out in the morning by vehicle, spot wildlife along the fly following behind SRT trackers and conservancy rangers as they track black rhino, before venturing out on foot.

### Nature Drives

Nature drives showcase the magnitude of the landscape and offer the best possibilities of seeing desert-adapted wildlife.

### Guided Nature Walks\*

An opportunity to discover the details of the desert and learn more about the lesser-known flora and fauna that survive in this incredibly harsh environment.

\*Weather permitting and subject to the availability of a qualified walking guide.

### Full-day Outings with Picnic Lunch

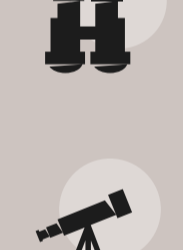
Spend a full day exploring the expansive Palmwag Concession, across the rocky hillsides dotted with ancient welwitschia plants, before setting down to lunch at a scenic spot.

### Stargazing

There's no better place to marvel at the southern hemisphere stars than from this remarkably remote Namibian landscape.

### Birding

Look out for a diverse array of birds; key species include Rüppell's korhaan, Benguela long-billed lark and Verreaux's eagle in the rocky hillsides.



# 03

## WILDERNESS DESERT RHINO CAMP

Everything we do at DRC revolves around these remarkable desert-adapted creatures. From its humble beginnings as a field station dedicated to protecting Namibia's last remaining wild black rhino, the camp has grown into a thriving community partnership. It is a sanctuary where adventurous travellers can find solace in one of the Earth's last untouched places, and some of the world's rarest animals find peace and protection.

- Trained numerous conservancy-based Rhino Rangers who assist with monitoring rhinos in the field and maintaining the largest black rhino database globally.

• Guest contributions help protect rhinos, and Wilderness provides financial support and employment to local communities, sharing a percentage of DRC revenue with conservancies and SRT.

### PURPOSE

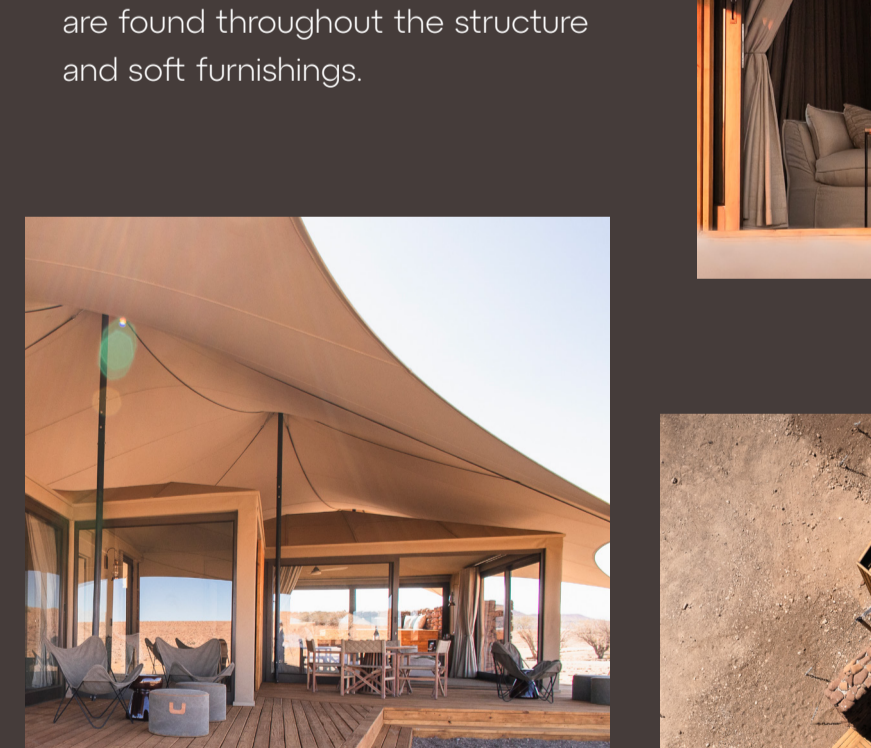
- Collaboration: Our pioneering partnership with three community conservancies and the Save the Rhino Trust ensures the ongoing conservation of one of the last free-roaming populations of black rhino on the planet.
- Community Involvement: 95% of SRT employees are from local communities.
- Poaching reduced by 80% in five years in Kunene Region.
- Wilderness Namibia support:
  - 21 years of supporting SRT's tracking team by covering operational costs.
  - Enabled SRT to expand its range by 20%.

### ROAM WITH RHINOS

At Desert Rhino Camp, the rhino tracking is central to the experience. Walking in the footsteps of some of the last remaining Critically Endangered black rhinos and other remarkable desert-adapted rarities. Guests play a part in their monitoring, each day, those who opt to track rhinos are provided with Sealand Explorer bags, to hold monitoring cards used to mark physical features of the rhinos, which assists the SRT team. A water bottle fits neatly into this bag as well, freeing up your arms to use binoculars for a closer view of these magnificent animals. It's not only a one-of-a-kind experience, but helps ensure rhinos continue to walk this ancient landscape for years.

### RENEWED LUXURY, INSPIRED BY THE DESERT LANDSCAPE.

Inspired by the palette, textures, and wildlife of Namibia's extraordinary vistas, smart architectural strategies enhance comfort at the new Desert Rhino Camp.



• Shades of terracotta, sage, fern greens, and cream bring the natural world into the interiors.

• Classic details of leather and timber are found throughout the structure and soft furnishings.



### FACILITIES



6 TENTS  
(Including one Family Unit)



SOLAR POWER  
(Photovoltaic system & backup generator)



Wi-Fi



# 04

## PLAN YOUR ITINERARIES

### JOURNEY WITH WILDERNESS

Combine your DRC safari with Namibia's other exceptional regions; stay at Wilderness Little Kulala in the renowned dunes of Sossusvlei and at Hoanib Skeleton Coast Camp in the ancient, otherworldly Kaokoveld.

From USD 550 pp



### ACCESS BY AIR

Transfer with Wilderness Air to Desert Rhino Camp Airstrip, followed by a 10-minute vehicle transfer to camp.

Contact your Travel Designer for more information and to book.

# 05

## TOOLKIT

PRESS RELEASE

IMAGES

VIDEO

WETU

