

AN ICONIC EAST AFRICA SAFARI ITINERARY



WILDERNESS

SPOTLIGHT ON
EAST AFRICA

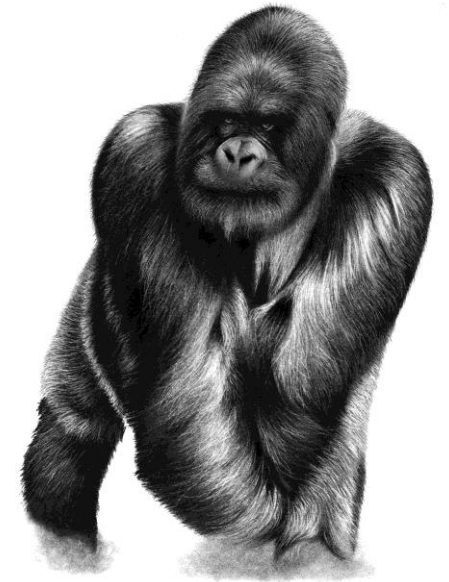




With over 28 years' experience with Wilderness, and having overseen the company's expansion into Tanzania, Grant has an in-depth knowledge of the company's operations and the conservation tourism industry as a whole.

With a BSc in Zoology and an Honours degree in Wildlife Management, Grant has always had a passion for wildlife and the environment, matched by his passion for the the business.

“As the company continues to expand its global footprint, into Tanzania and beyond, I look forward to making a positive impact in these remarkable wilderness areas”.



WILDERNESS ITINERARY



WILDERNESS CAMPS

- 3 nights Usawa Serengeti
- 3 nights Magashi
- 3 nights Bisate

WILDERNESS OFFER

Book this itinerary and take advantage of a free night if you book six nights and more.

[Read more](#)

Wilderness Usawa Serengeti



6 Tents
(1 family)



Game drives
morning and
afternoon only;
all day on
request



Stargazing



Guided
nature walks



Birding

Place: Wilderness Usawa Serengeti is located in Serengeti National Park, one of Africa's seven Natural Wonders. Spanning 15,000 square kilometres, the park hosts the Great Migration – Africa's most remarkable wildlife event. Each year, two million wildebeest, zebra, and gazelle traverse the Serengeti, breeding, birthing over 300,000 calves, and facing perilous river crossings. These dramatic interactions attract lions, hyenas, and crocodiles, creating endless predator-prey spectacles. Positioned away from crowded areas, Wilderness Usawa offers front-row access to the action.

Accommodation: Wilderness Usawa Serengeti is a luxury mobile camp that follows the migration. The camp relocates seasonally to prime locations: the south for calving, the north for crossings, and the Eastern Kopjes year-round. Despite its mobility, the camp offers unmatched luxury and comfort, accommodating up to 12 guests in six en-suite safari tents, also available for sole use. Guided by expert Wilderness guides, your safari promises maximum action and unforgettable memories.

WHY WILDERNESS USAWA SERENGETI? GRANT SAYS...

- Covering 15,000 square kilometres, Serengeti National Park is a Natural Wonder of Africa and home to the iconic Great Migration, where millions of wildebeest, zebra, and gazelles move through predator-rich landscapes.
- Close to the migratory herds but far from crowded tourist spots, Wilderness Usawa Serengeti offers a private, remote safari experience with thoughtfully designed tented camps.
- Our flexible camp follows the migration across nine prime locations, ensuring guests are always at the heart of the action. Two camps are always positioned near the herds, ensuring guests are never far from the migration's magic.
- Situated within walking zones, Usawa Serengeti allows guests to set off on walking safaris straight from camp.
- Expert Wilderness guides bring the Serengeti to life with their deep knowledge of its landscapes, wildlife, and culture, creating unforgettable experiences.
- With just six tents accommodating 12 guests, Usawa Serengeti is intimate yet luxurious. Even as the camp moves, every detail – from high-end service to exceptional comfort – is carefully maintained.







 WILDERNESS USAWA SERENGETI – MAIN AREA

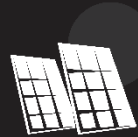


 WILDERNESS USAWA SERENGETI – BEDROOM

Wilderness Magashi



8 Tents



100% solar



Boating



Game drives
(day & night)



Catch-and-
release fishing

Place: Perched on Magashi Peninsula, Wilderness Magashi looks out over scenic Lake Rwanyakazinga towards the Mutumba Mountains in the west. The shore itself offers views of hippo, large crocodiles and a chance of elephant bulls, while the core of the Amahoro lion pride is encapsulated by this spit of land.

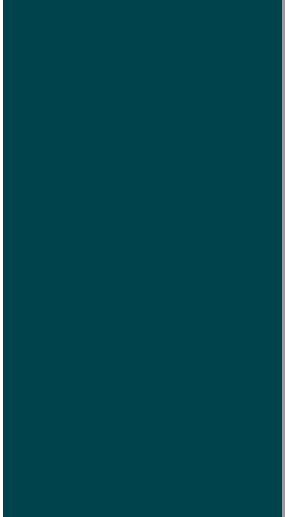
Accommodation: Eight spacious and airy tented guest rooms offer uninterrupted views over Lake Rwanyakazinga, while Magashi's main area comprises a luxurious lounge and dining area, bar and pool, as well as an expansive viewing deck with convivial fire pit. The architecture and interiors pay homage to traditional Rwandan culture.

WHY WILDERNESS MAGASHI? GRANT SAYS...

- Magashi is a superb in-country combination with Rwanda's gorilla trekking, offering a rewarding traditional – and particularly scenic – African savannah experience.
- The only exclusive-use area in the Akagera National Park, allowing for private safaris facilitated by expert guides for Wilderness guests only.
- Big game such as lions, leopards, Eastern black rhinos, elephants, buffalos, giraffes, zebras and hippos roam.
- Diverse habitats – open plains, woodlands, lakes, swamps, and grassy low mountains – can be explored by boat and day/night game drives.
- Guests can participate in conservation efforts, including tracking and identifying the lions and leopards of the area through the use of identikits.
- Magashi was established in partnership with the Rwanda Development Board and African Parks, affirming our commitment to pioneering sustainable and authentic conservation tourism in Rwanda.









 WILDERNESS MAGASHI – BEDROOM

Wilderness Bisate



6 Forest Villas



Guided walks and drives



Reforestation programme



Gorilla trekking



Cultural excursions

Place: Wilderness Bisate has dramatic views of the Bisoke and Karisimbi volcano peaks rising from the forests of nearby Volcanoes National Park. It is within easy driving distance of park Headquarters, from where once-in-a-lifetime gorilla treks depart daily. Exploring around Bisate includes community visits, birding, golden monkey tracking, and helping reforest the area, Gorilla Guardian Village, the Twin Lakes of Ruhondo and Burera, and Dian Fossey's grave.

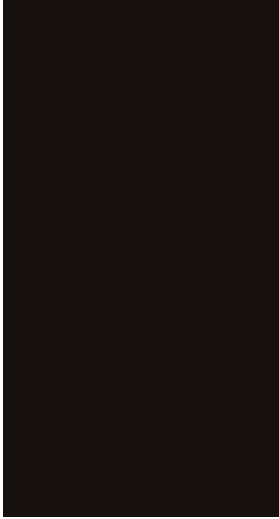
Accommodation: Six magnificent en-suite Forest Villas are warmed by a central fireplace and have breathtaking views from the deck. The main area comprises a luxurious lounge, dining and bar area, wine cellar and viewing deck. Both the architecture and interiors are rooted in Rwandan cultural traditions.

WHY WILDERNESS BISATE? GRANT SAYS...

- Set on the edge of Volcanoes National Park, and an easy drive to the park gate, Bisate is located at a vantage point that feels part of the park, offering breathtaking views of six volcanoes, including Bisoke, Karisimbi and Mikeno.
- Bisate Kwanda Day Lounge celebrates the people involved in local community and conservation efforts, and those who worked closely with Dian Fossey.
- Bisate's vision is to be a model of conservation tourism in Rwanda. Its pioneering reforestation and rehabilitation projects have each guest partnering with us in contributing to biodiversity protection and local community upliftment, making a far-reaching positive impact on an iconic endangered species: the mountain gorilla.
- The architecture of the lodge, and the interiors of the six opulent en-suite Forest Villas, beautifully embody the traditions of Rwandan royalty.













 WILDERNESS BISATE LODGE – BEDROOM

THANK YOU

Discover Earth's Ultimate, Untamed Places



WILDERNESS

www.wildernessdestinations.com