

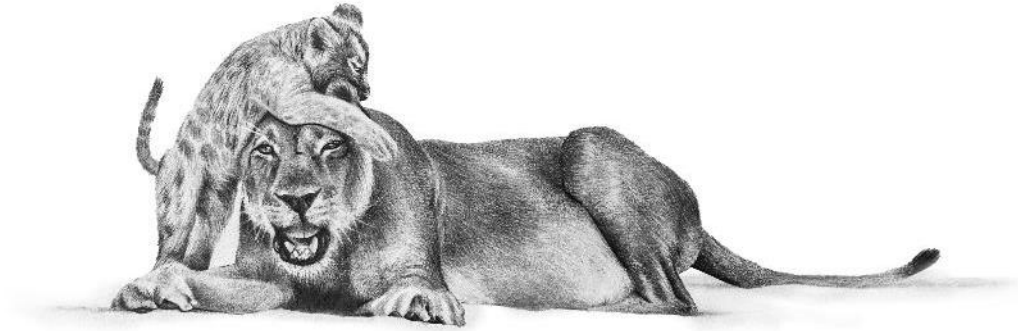
FROM THE FIELD: IMAGES CAPTURED BY OUR GUIDES, STAFF & INFLUENCERS



WILDERNESS

# SPOTLIGHT ON NAMIBIA





Explore our latest collection of sightings from our Namibian regions.  
These images, captured by our skilled guides and guests, offer a glimpse into the raw,  
unfiltered, and unedited ways of the wild.

Each photo shows the wilderness as it truly is – authentic, unpredictable, and unforgettable



W I L D E R N E S S

**Note:** Hold Ctrl and click the play button to open the video in a new browser tab.



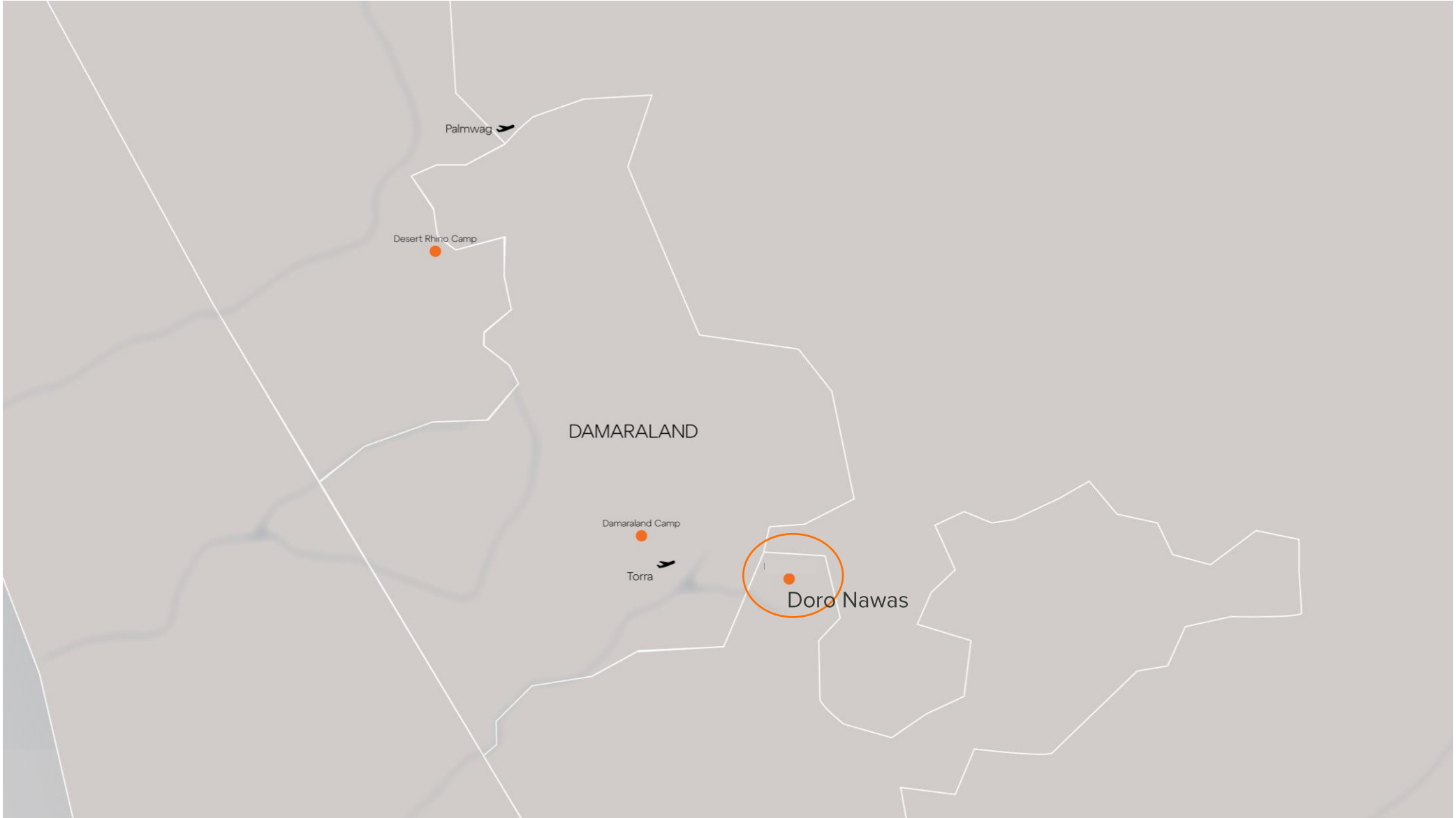
# KULALA WILDERNESS RESERVE





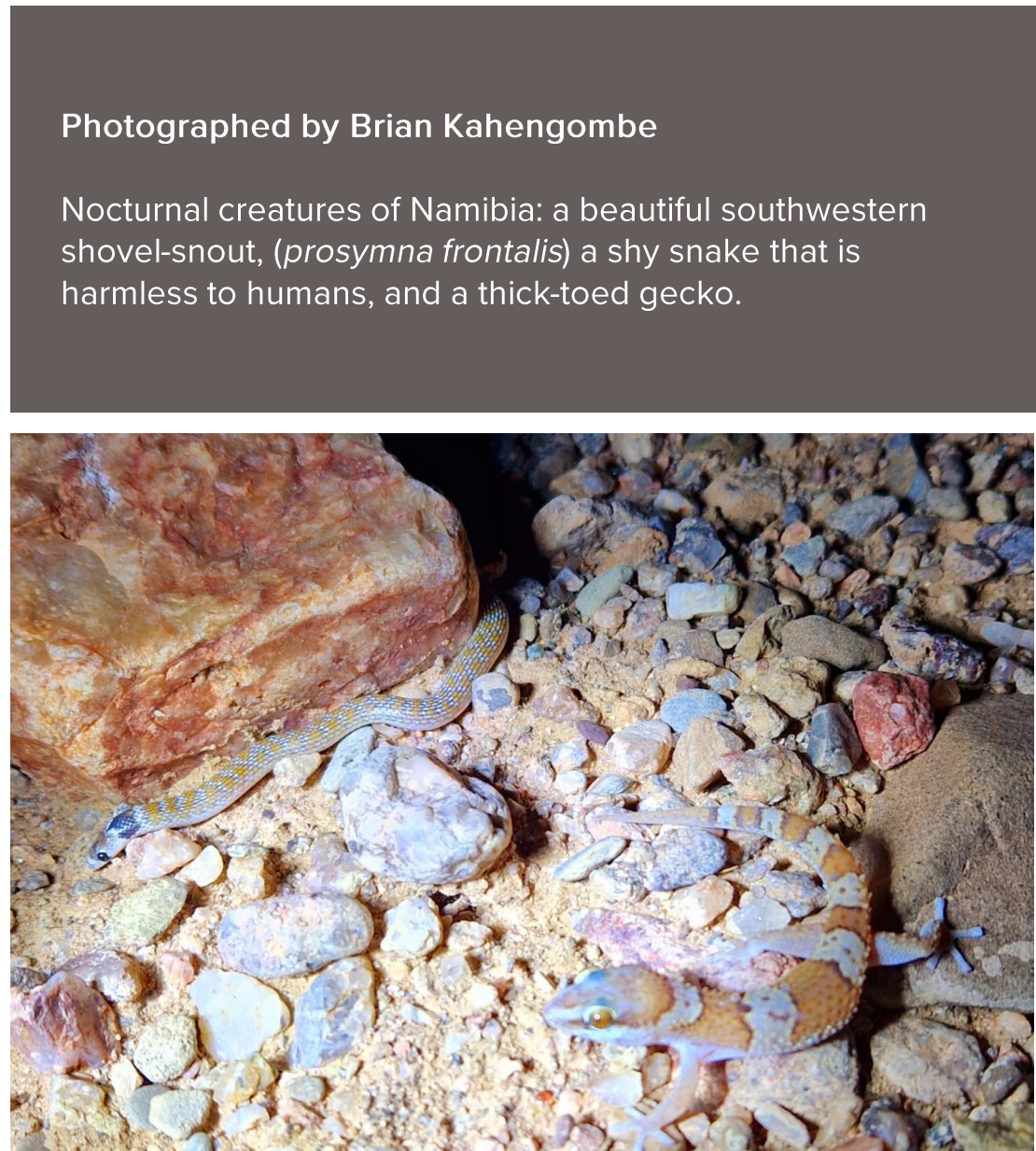
### Video by James Muzamai

An incredible sighting at Wilderness Little Kulala: a brown hyena on the move. One will typically see these very shy animals staying at Wilderness Hoanib Skeleton Coast Camp. Its return is testament to the efforts to rehabilitate old farmland over the past 20 years. Read more about it in our blog - [The restoration of Kulala Wilderness Reserve.](#)



# DORO NAWAS

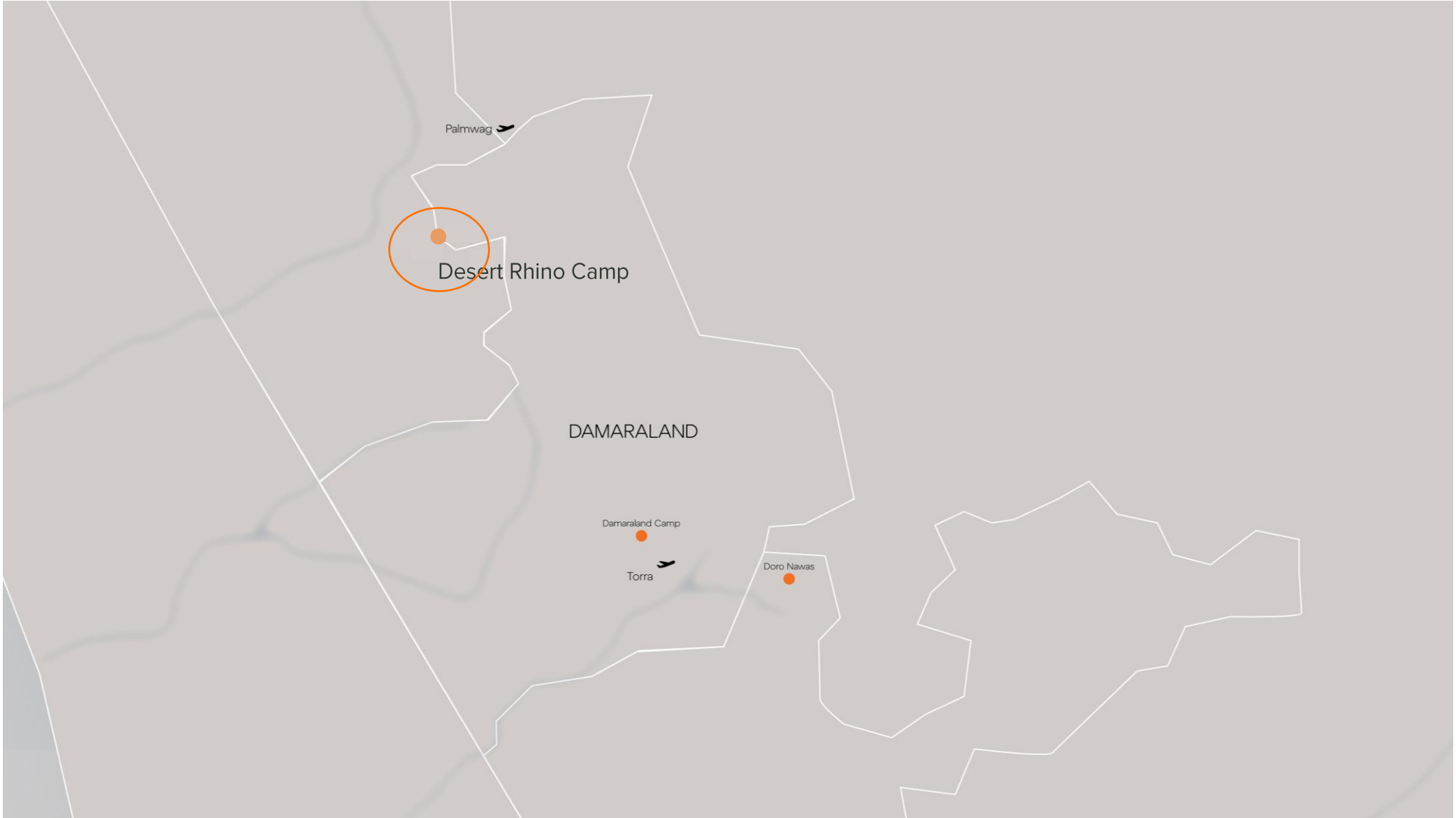




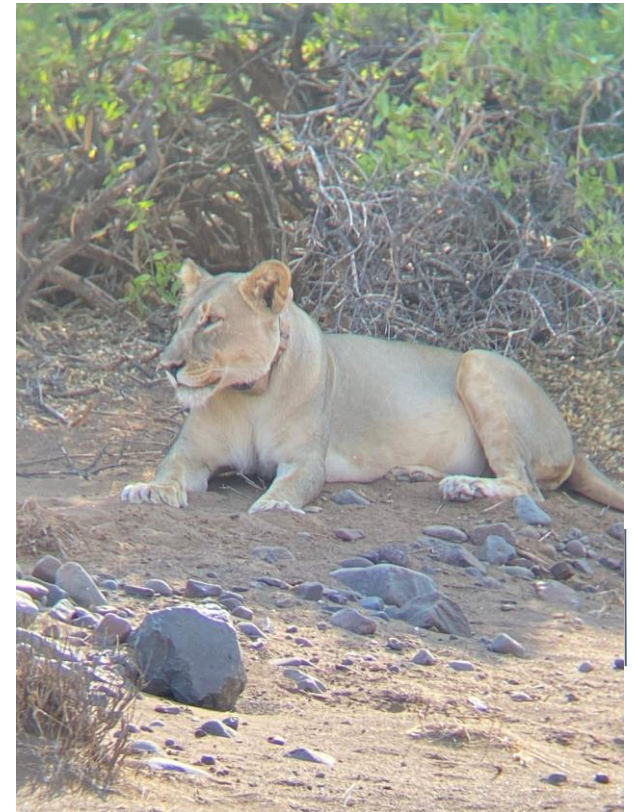
Photographed by Brian Kahengombe

Nocturnal creatures of Namibia: a beautiful southwestern shovel-snout, (*prosymna frontalis*) a shy snake that is harmless to humans, and a thick-toed gecko.





# DESERT RHINO CAMP



**Video and photos taken by Joryn Barnard – Head of Sales, Namibia**

A very rare sighting at Wilderness Desert Rhino Camp: a lone lioness. An important aspect of collaring lions is to monitor their movements; used primarily for research purposes, but an added benefit is that collars function as an early warning system to curb human wildlife conflict.





Photos shared by Bons Roman

A praying mantis, the only insect with the ability to turn its head from side to side, as seen here.





# HOANIB SKELETON COAST CAMP



Photographed by Liz Opperman – Assistant Relief Manager

Two different desert elephant families, one shared resilience. Observing these incredible creatures in their natural habitat is a reminder of the strength in unity and adaptation.







**Photographed by Liz Opperman – Assistant Relief Manager**

Usually a stay at Wilderness Hoanib Skeleton Coast Camp offers the beauty of dry riverbeds, sightings of elephants, giraffe, springbok and oryx, and the scenic flight to the coast. This surprise sighting of these cheetahs highlights how special Namibia can be.





Photographed by Willies Amakali

Desert-adapted elephants are experts at navigating dunes; this elephant chose the quickest route down.

Photographed by Ant & Bernard Ndewenda

Though lion sightings are fairly rare, even more remarkable is a sighting of lions and elephants together.





Photographed by Bernard Ndewenda

Lions, cheetah, springbok, a pale-chanting goshawk, and otherworldly dunes – all possible sightings during a stay at Hoanib Skeleton Coast Camp.





Serra Cafema

SKELETON COAST

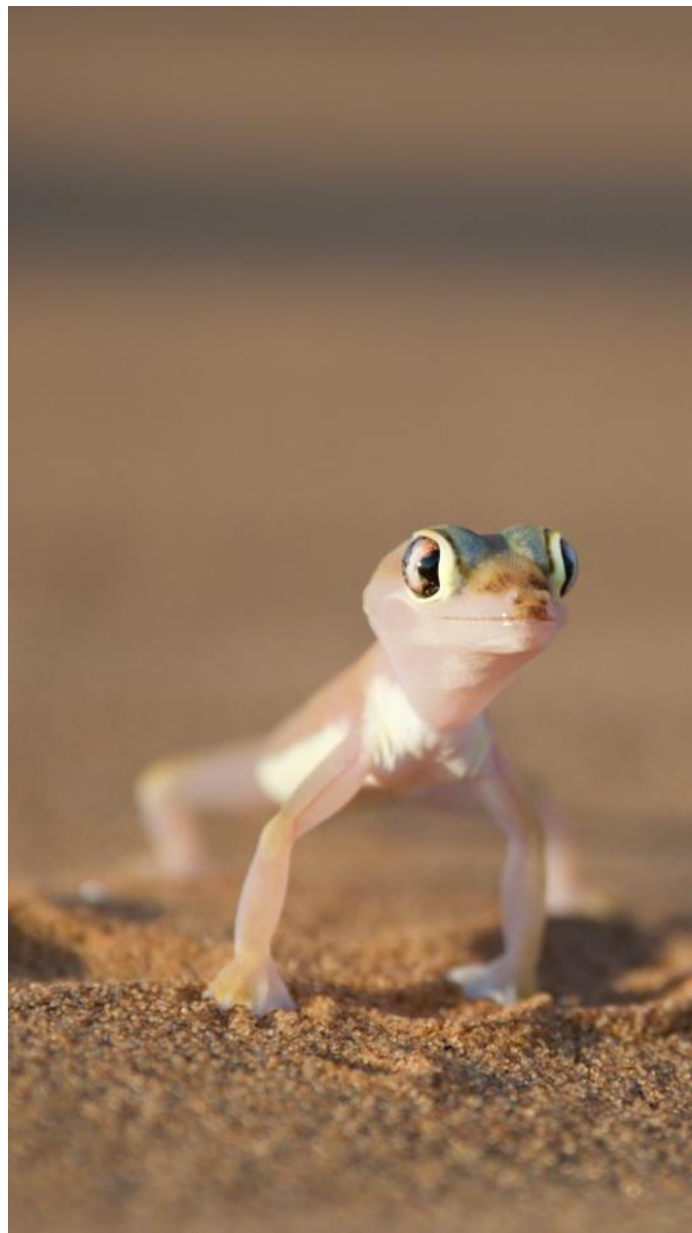
# SERRA CAFEMA



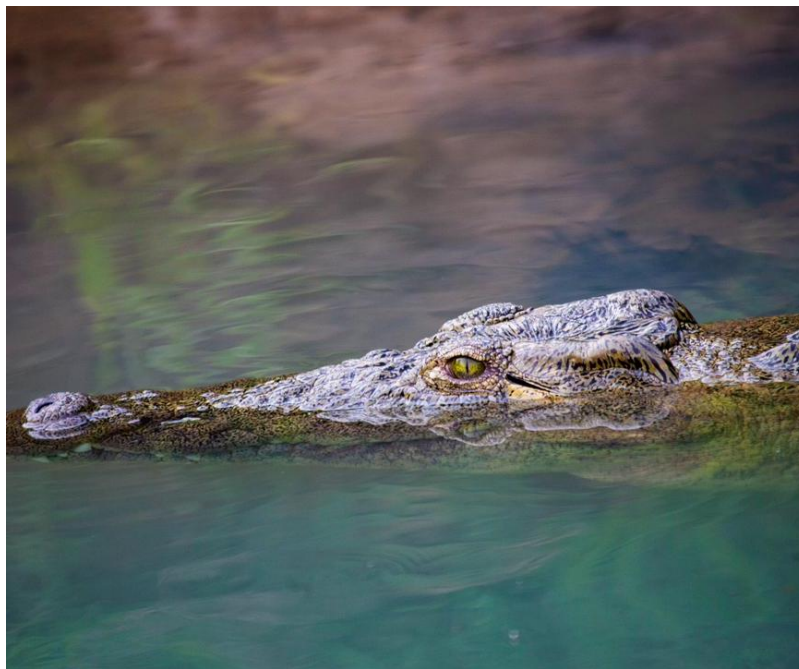
## Photos taken by Moses Sheehama

In Namibia, sometimes the little things can be just as interesting and make great photographs—a green scorpion and a Namib web-footed gecko, for example.

Besides the natural world, there are 13 ethnic groups in Namibia. The photo (far right) is from a recent visit to the Himba village, located near Wilderness Serra Cafema in the most northern part of Namibia.







Photographed by Moses Sheehama

The photos highlight the variety of experiences for quests at Wilderness Serra Cafema, from visiting the local Himba community, to boating experience on the Kunene to activities in the Namib dunes.



Photographed by Moses Sheehama

Finding a Namaqua chameleon on a game drive is always a special moment. The trained eyes of Moses spotted this little fellow, well camouflaged between the rocks.





Three photographers who visited Wilderness Little Kulala and Wilderness Desert Rhino Camp shared the following images with us.



PHOTOGRAPHIC  
COLLABORATION





A lone brown hyena, photographed by  
Keith Ladzinski and Tommy Joyce





Gemsbok (Oryx) and a Stag Darkling beetle photographed by Brittany Mumma and Tommy Joyce





Hartmann's mountain zebra photographed  
by Brittany Mumma and Tommy Joyce

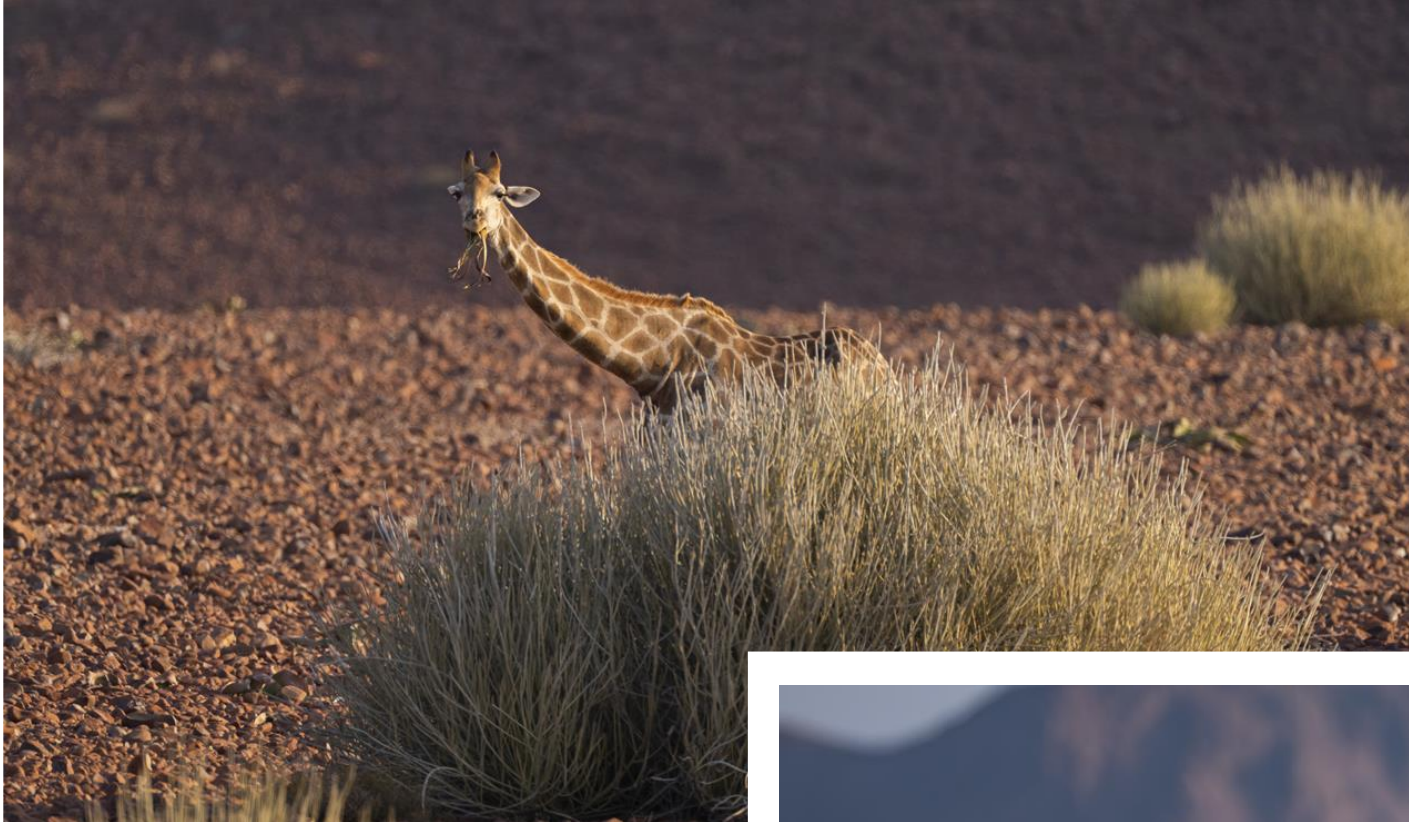






Hartmann's mountain zebra  
photographed by Keith Ladzinski





Giraffe, black-backed jackal and springbok photographed by Brittany Mumma and Tommy Joyce







A Rosy-faced Lovebird in flight, a Mountain Wheatear and a Rüppell's korhaan photographed Tommy Joyce



# THANK YOU

Discover Earth's Ultimate, Untamed Places



WILDERNESS

[www.wildernessdestinations.com](http://www.wildernessdestinations.com)