



FORA

Botswana

ASTONISHING WILDLIFE & LANDSCAPES

Heed the call of the wild on a
Botswana safari.



Botswana



SIZE OF COUNTRY

581,730 km²

Bigger than Spain and roughly the same as France



POPULATION

2,346,179 (2022)

Same as Houston and smaller than Madrid



LAND UNDER PROTECTION

244,327 km² (42%)



ENTRY POINTS

Maun & Kasane



CAPITAL

Gaborone

- **42% of Botswana's land is protected** for conservation and wildlife.
- **High-value, low-volume tourism strategy**, along with low population, equal unsurpassed privacy and exclusivity on safari; including some of the top luxury camps in Africa.
- **Profusion of game, predators and exceptional birds**; and is home to the **biggest population of elephants in Africa**.

An oasis within the desert!



WILDERNESS



4 Key areas:

The Okavango Delta

Chobe, Linyanti, Selinda & Kwando

Makgadikgadi Pans

Central Kalahari



NP = National Park
GR = Game Reserve
TP = Transformational Park
NR = Nature Reserve

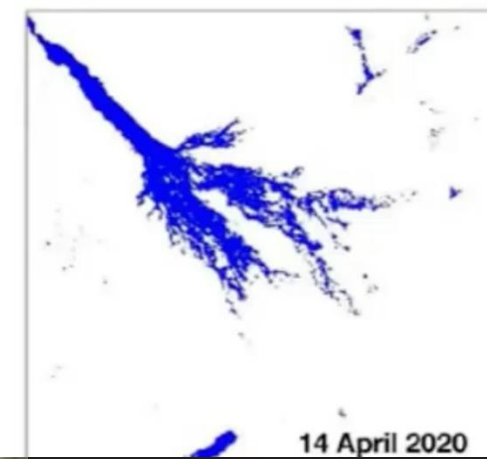
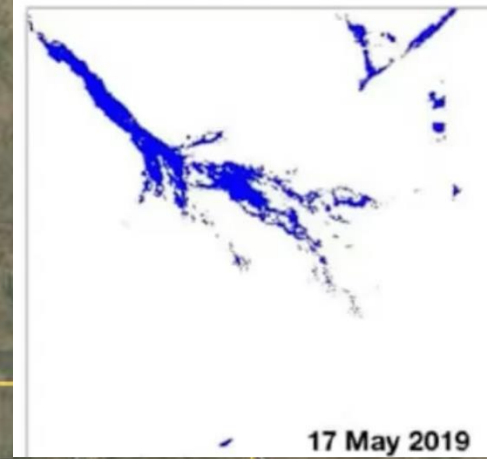
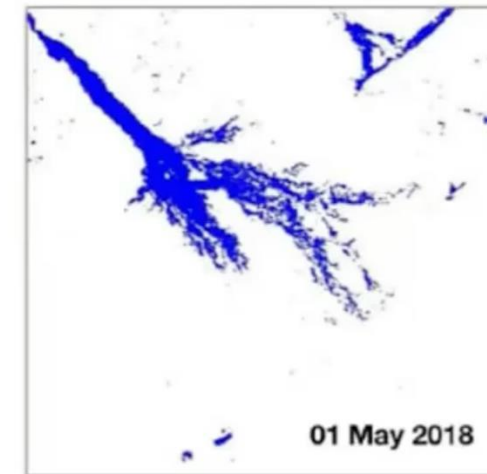
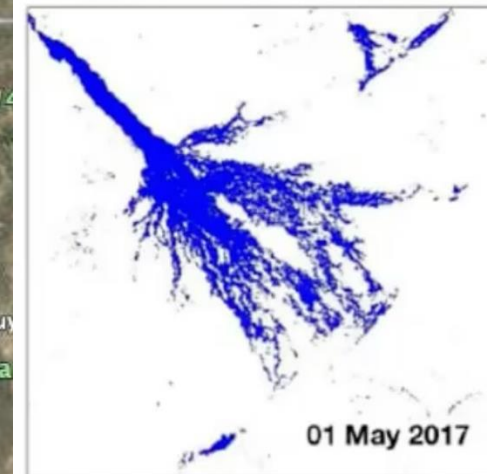
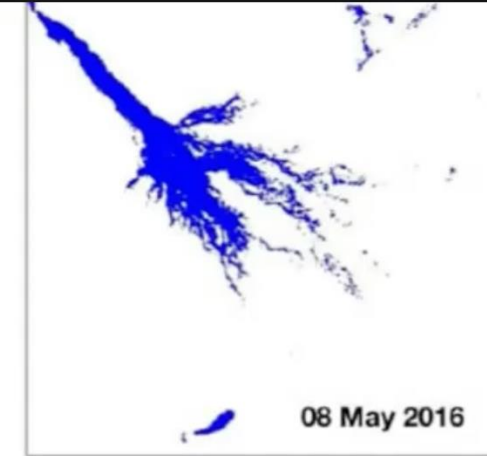
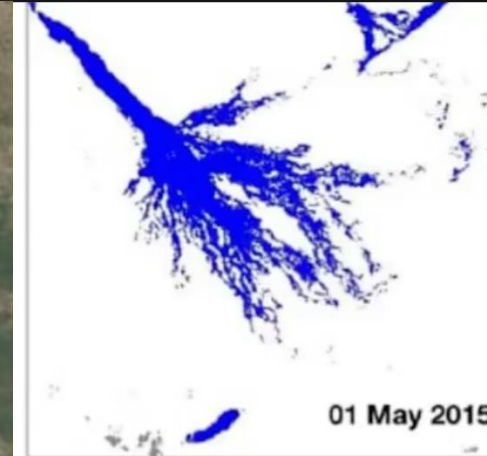
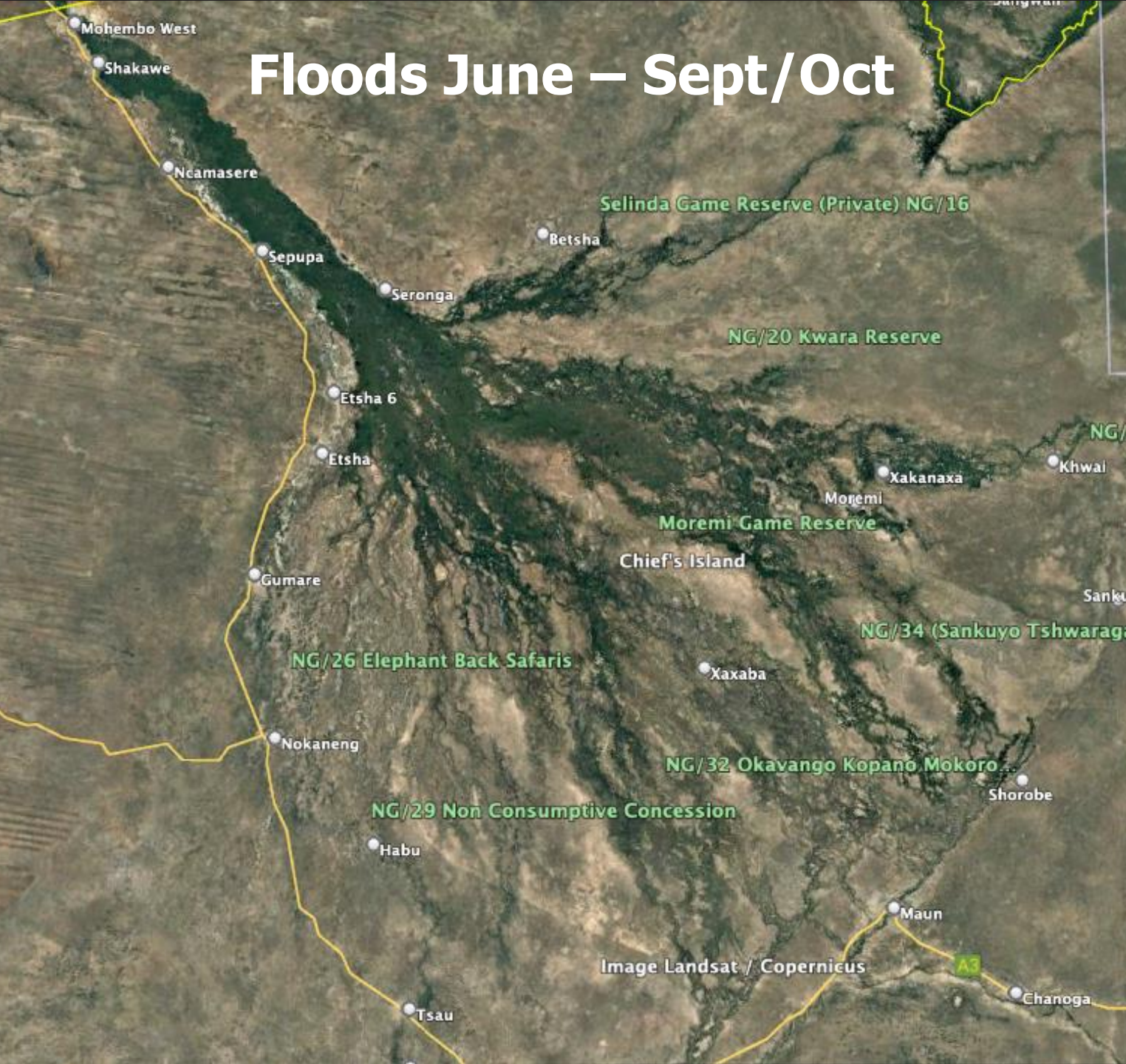




Okavango Delta

DISCOVER AFRICA

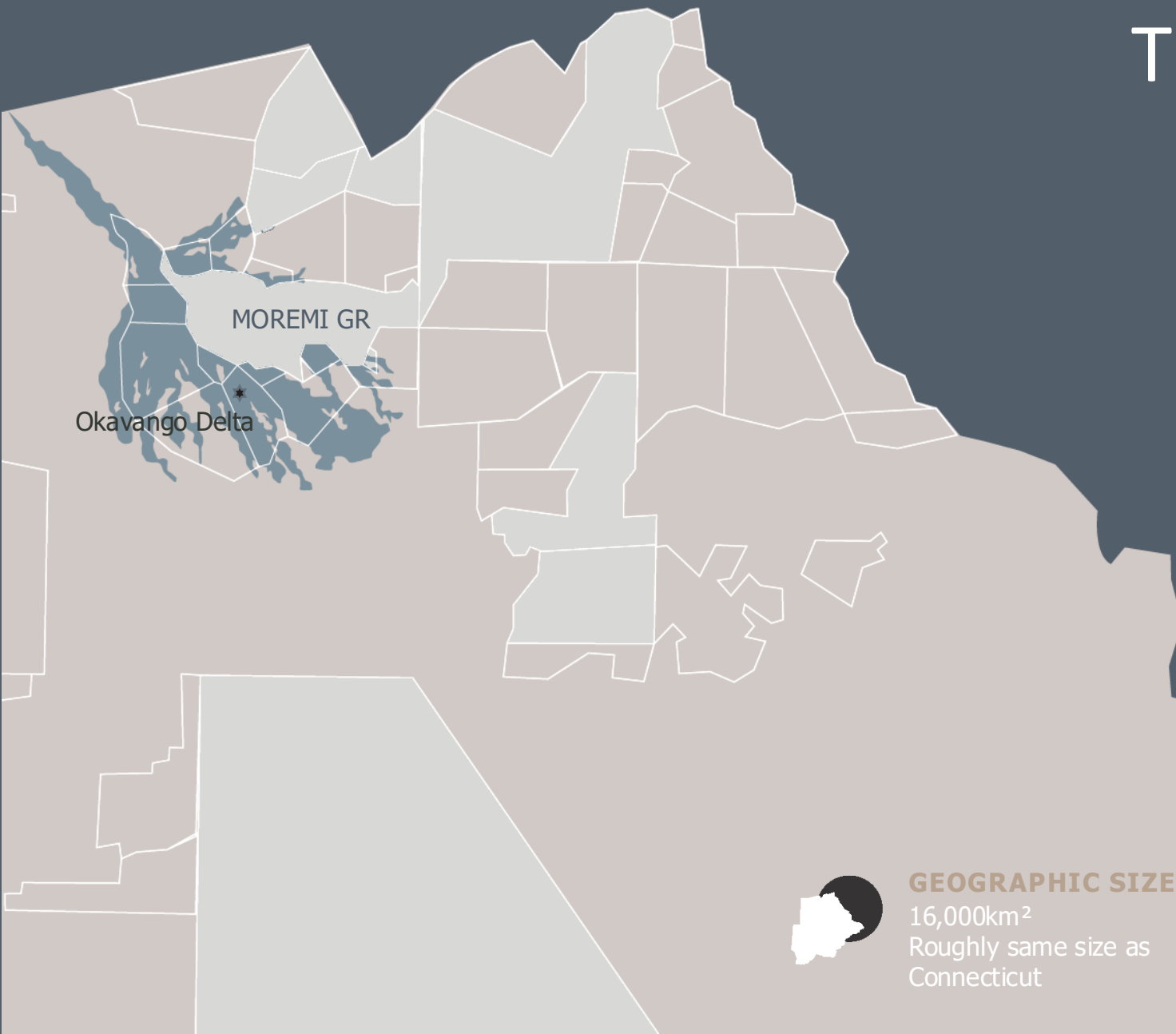
Floods June – Sept/Oct







The Okavango Delta



- **A UNESCO World Heritage Site** and one of the world's largest inland Deltas that provides a unique ecosystem in the Kalahari Desert.
- **Large number of elephants, variety of bird species, diversity of antelopes and vast array of large – and small – predators** (lion prides, African wild dogs, leopards, hyenas and occasional cheetah, raptors) resulting in an immensely rich and thrilling wildlife experience.
- **Extensive range of activities** – a diversity of habitats are explored by: day and night game drives, nature walks, boating, mokoro and helicopter rides; **with camps often located on large private concessions for intimate and undisturbed wildlife viewing.**



GEOGRAPHIC SIZE
16,000km²
Roughly same size as
Connecticut



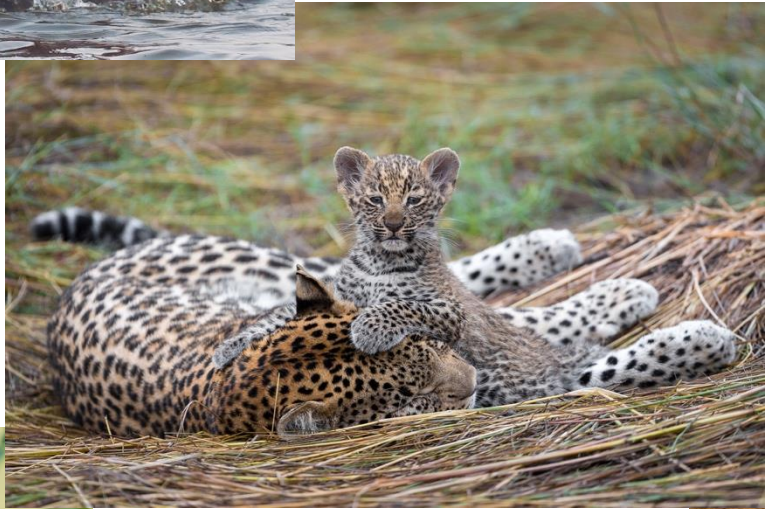
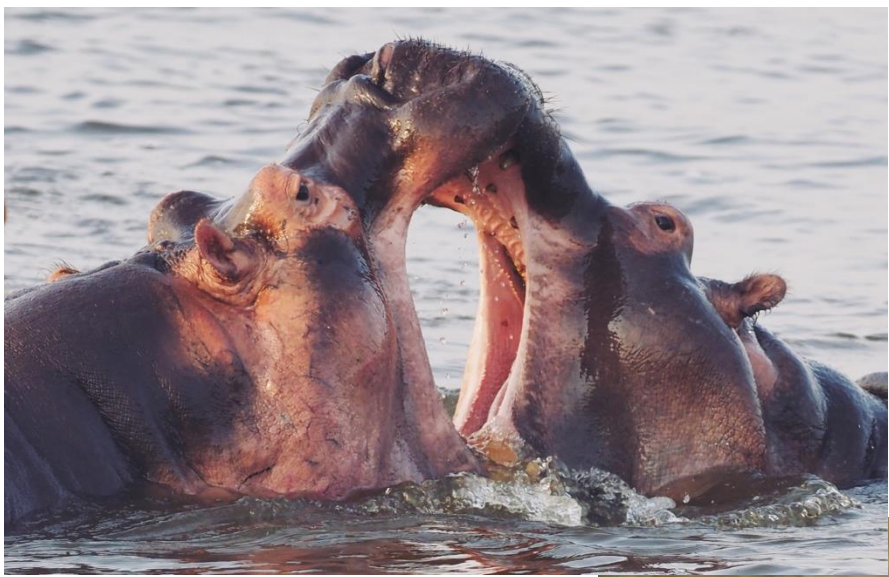
BIRD SPECIES
+/- 400



MAMMAL SPECIES
+/- 122



THE OKAVANGO DELTA





Karangoma

Okavango Explorers Camp

North Island Okavango Camp

Kadizora Camp
Sitatunga Private Island

Mbamba
Duke's Camp & Duke's East Camp

Duba Explorer
Setari Camp

Vumbura Plains
Little Vumbura

Kwando 4 Rivers Camp

Hyena Pan

Sanguni Safari Lodge

Shinde Camp
Camp Okavango
Kwando Kwara Camp
Kwando Splash Camp
Tuludi Camp

Sable Alley

Machaba Camp

Little Machaba

Sediha Sa Rona Camp

Camp Khwai

Monachira Camp

Khwai Lediba

Little Sable

Khwai Leadwood

Okuti Camp

Sango Safari Camp

A&K Sanctuary Chief's Island

Camp Xakanaxa

Camp Moremi

Mombo & Little Mombo
Kwetsani
Tubu Tree & Little Tubu
Pelo
Jacana
Jao

Singita Elela
Xigera Safari Lodge

Macatoo Camp

&Beyond Nxabega

Belmond Eagle Island Lodge

&Beyond Sandibe

Chitabe & Chitabe Lediba

Santawani Lodge

Pom Pom

Kanana Camp

Gunn's Camp

Qorokwe

Gomoti Plains Camp

Gomoti Private Camp

A&K Sanctuary Baine's Camp

A&K Sanctuary Stanley's Camp

Rra Dinare

Mma Dinare

Mokolwane Camp

&Beyond Xaranna

Amber River Camp

Atzaro Okavango

Daunara Safari Camp

Kiri Camp

A large elephant is partially submerged in a body of water, likely a river or lake, during the golden hour of sunset. The elephant's head and tusks are visible above the water, and its reflection is clearly seen in the calm water. The background shows a distant shoreline with trees and several birds flying in the sky. The overall mood is peaceful and majestic.

Chobe, Linyanti, Selinda & Kwando

DISCOVER AFRICA



Zambezi River

Kasane Town

Chobe River

Linyanti River

Kwando River

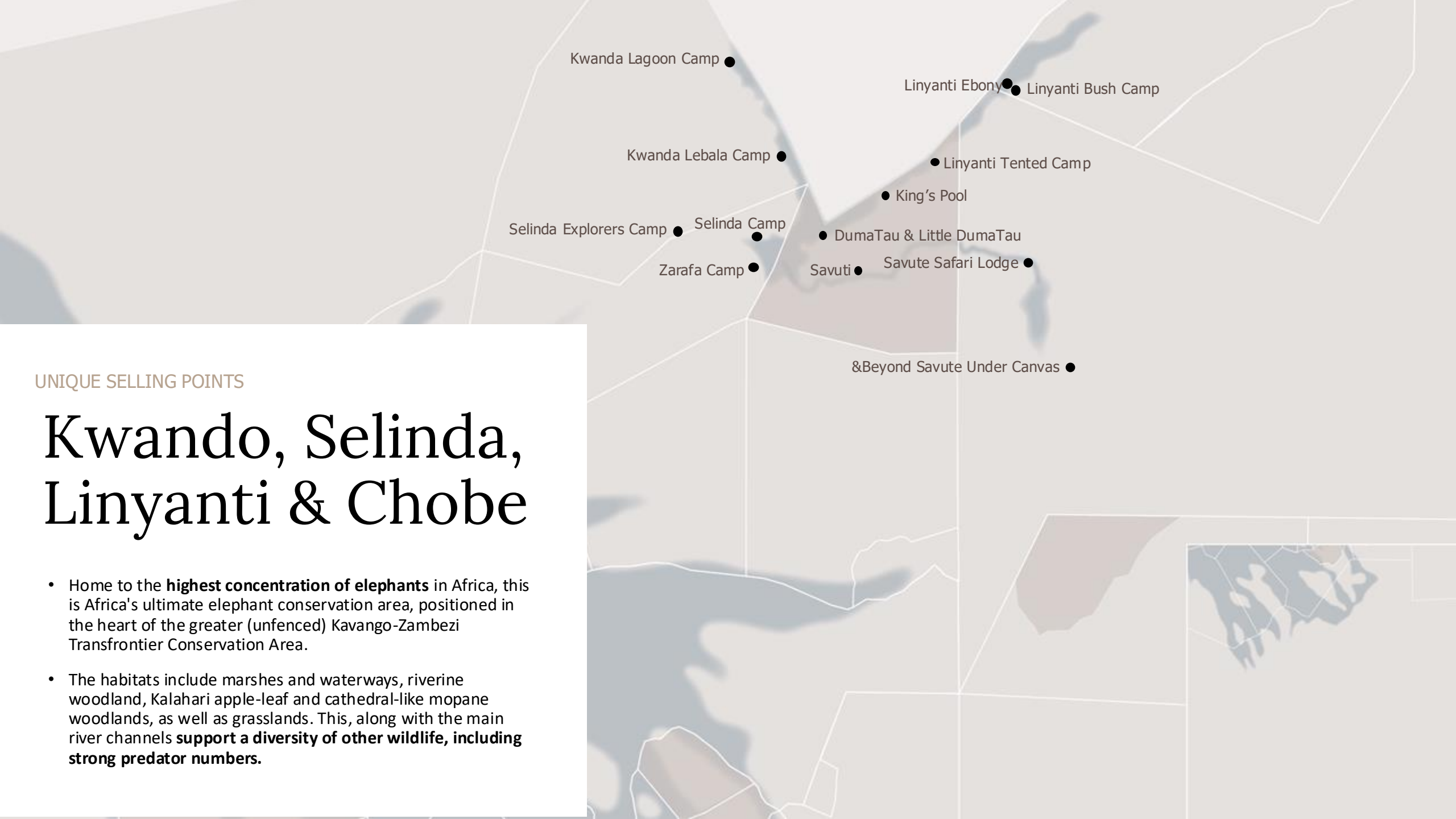
Selinda
Spillway

Savute Channel

Savute Marsh

Image Landsat / Copernicus

Google Earth



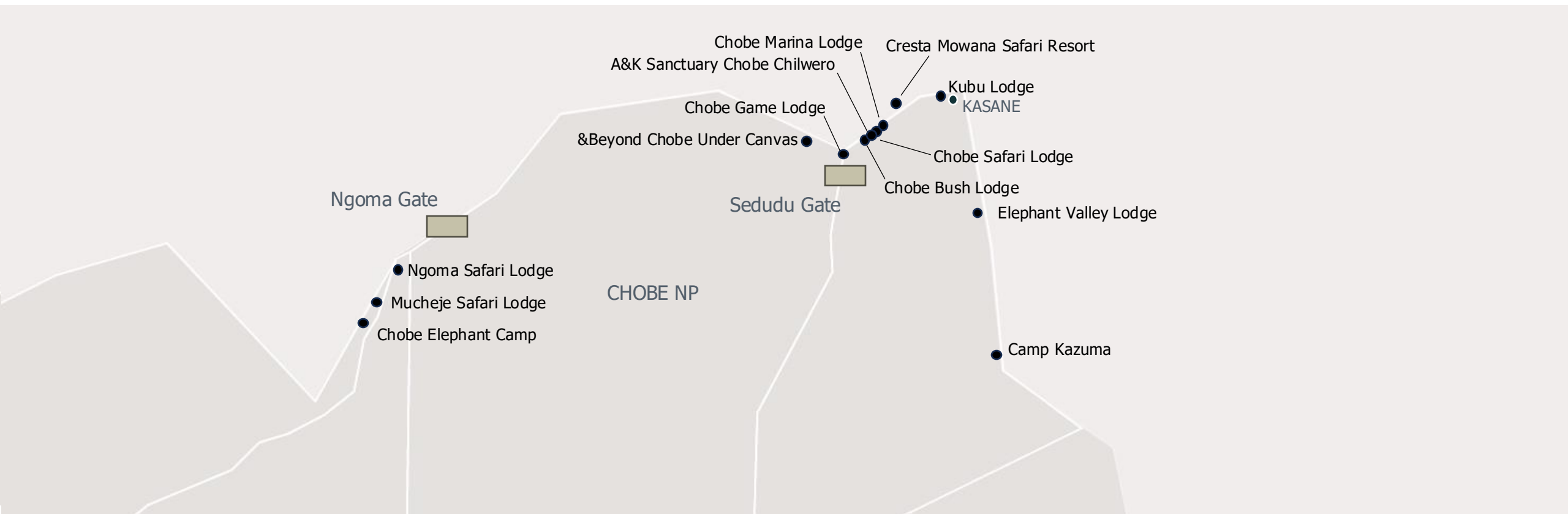
UNIQUE SELLING POINTS

Kwando, Selinda, Linyanti & Chobe

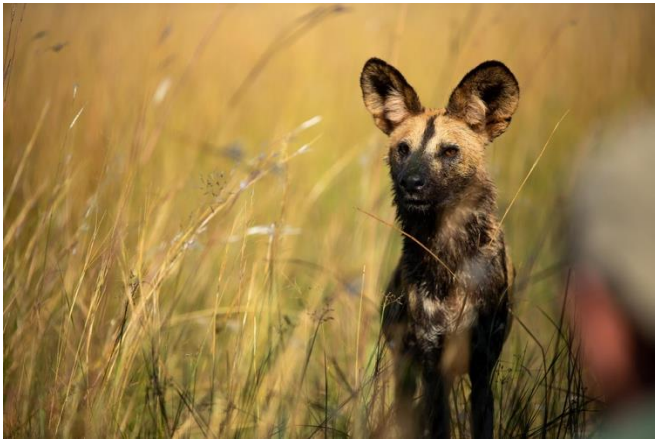
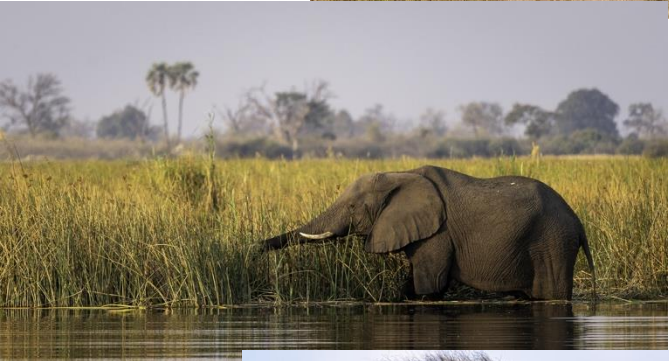
- Home to the **highest concentration of elephants** in Africa, this is Africa's ultimate elephant conservation area, positioned in the heart of the greater (unfenced) Kavango-Zambezi Transfrontier Conservation Area.
- The habitats include marshes and waterways, riverine woodland, Kalahari apple-leaf and cathedral-like mopane woodlands, as well as grasslands. This, along with the main river channels **support a diversity of other wildlife, including strong predator numbers.**











KWANDO, SELINDA & LINYANTI

An aerial photograph of the Makgadikgadi Salt Pans in Botswana. The landscape is a vast, flat expanse of dry, cracked earth interspersed with numerous small, shallow pools of water. The water reflects the warm, golden light of the setting or rising sun, creating a shimmering effect. In the middle ground, there are several small, white, dome-shaped structures, likely traditional dwellings or huts, scattered across the landscape. The horizon is flat and extends to the edge of the frame, with a clear, pale sky above. The overall scene conveys a sense of isolation and the harsh beauty of a desert environment.

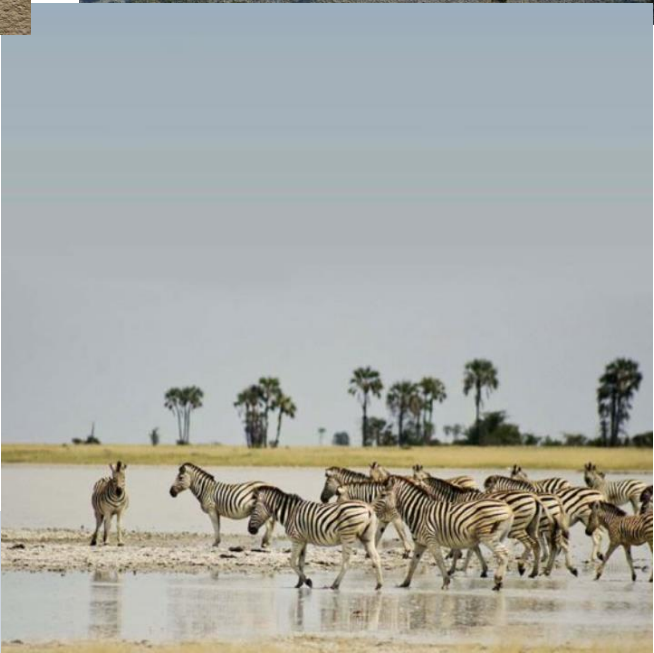
Makgadikgadi Salt Pans

DISCOVER AFRICA









MAKGADIKGAI PANS

CENTRAL KALAHARI RESERVE





THE CENTRAL KALAHARI

4 Key areas:

The Okavango Delta

Chobe, Linyanti, Selinda & Kwando

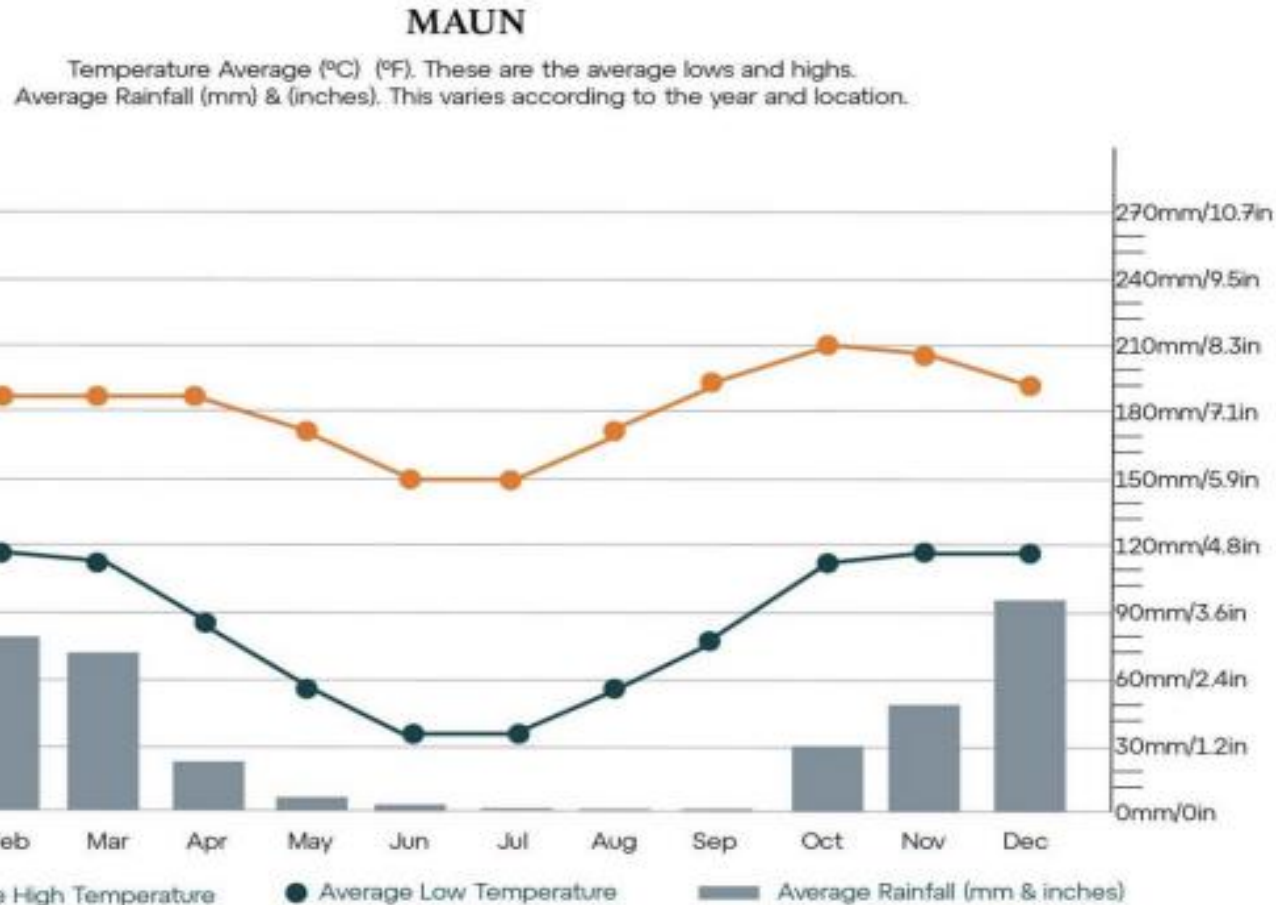
Makgadikgadi Pans

Central Kalahari



Seasonality:

- General rule – **June through October** is the peak season, characterised by dry (no rain) and cooler conditions, and the Delta is flooded.
- October is very hot and dry though.
- The shoulder months of April and May (even March) are lovely times to visit, with green, vibrant landscapes, babies being born, and prices often lower.
- The Delta is a year-round destination, elsewhere be mindful.



However:

- Makgadikgadi and Central Kalahari are reversed in terms of wildlife.
- They have higher numbers of animals during Dec-Mar with the rains.
- As a result, they can also be year-round, however, it is very hot Dec-Mar.

Top tip:

November is my favourite (if clients don't mind the heat) – wildlife is concentrated around remaining water resources for epic viewing, and prices are low.

International airports:
Maun & Kasane

International flights

Maun

Airlink (4Z)
From Cape Town (daily) – 2hrs 40mins
From Joburg (2 x daily*) – 1hr 40mins
• except on Fridays when can be just one

Ethiopian Airlines (ET)
From Addis Adaba (Mon, Wed, Sat) – 5hrs 10mins

Kasane

Airlink (4Z)
From Joburg (daily) – 1hr 40mins

NB guests can drive to Kasane
from Victoria Falls – roughly 2hr
drive (including immigration)
from Zambian or Zimbabwe side

Internal logistics... it's easy!
Light aircrafts (or heli) are used
to get between all locations.

NB no schedule

(It is possible to drive for mobile/budget/self-
drive trips).

Light aircraft flights



Luggage limit of **44lbs per person.**

2 bags: hold bag (soft sided) and carry-on (backpack).

* The 2 bags together must be within the limit of 44lbs

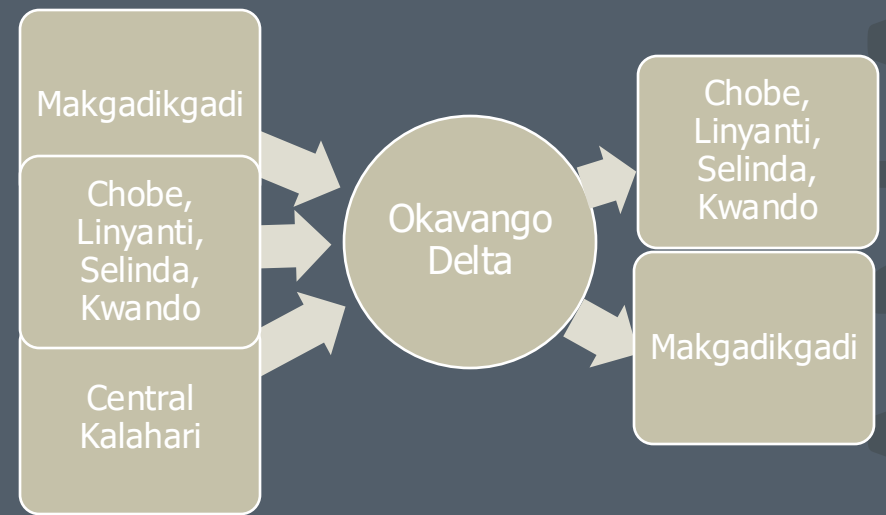


The good news is every camp has laundry included (usually same day service).

You don't need to dress up/have a lot of clothes when on safari. Extra luggage/weight can be paid for.

Typical itineraries:

- Okavango Delta on its own, even stay at two camps (wet & dry camp) – combined with an extension below.
- Okavango Delta (1 or 2 camps) combined with Kwando/Selinda/Linyanti/Chobe or Makgadikgadi.
- Central Kalahari or Makgadikgadi > Okavango Delta > Kwando/Selinda/Linyanti/Chobe
- If coming from Victoria Falls: Chobe (4 star) or Linyanti/Selinda (5 star) followed by Okavango Delta (and could add Makgadikgadi if have time).



Extensions:

- Cape Town (before or after) – direct flights from CPT to MUB
- Victoria Falls (before or after) – 2hrs road transfer to Kasane
- Kruger, Zimbabwe or Zambia for additional safari – usually best to finish in Botswana.

Which clients:

- Clients that value excellent wildlife viewing, avoiding crowds, and are happy to pay extra for that. Also those that like high-end camps.
- Great for both first time safari go-ers and those who have been elsewhere (eg East or South Africa); also for families.

Pricing (rough guide as can mix camp combos):

- 5 star rates: \$3-5k pp per night (peak)
- Starting price at \$20-25k per person in peak for 6 nights.
- 4 star rates: around \$2k pp per night (peak)
- Starting price around \$15k per person in peak for 6 nights.

- **Key thing: all depends on the camp combination and it's common to start at 4 star and build up to a 5 star.**

THANK YOU



QUESTIONS?