



WILDERNESS PRODUCT – MARCH 2025

# BOTSWANA NEWS & UPDATES

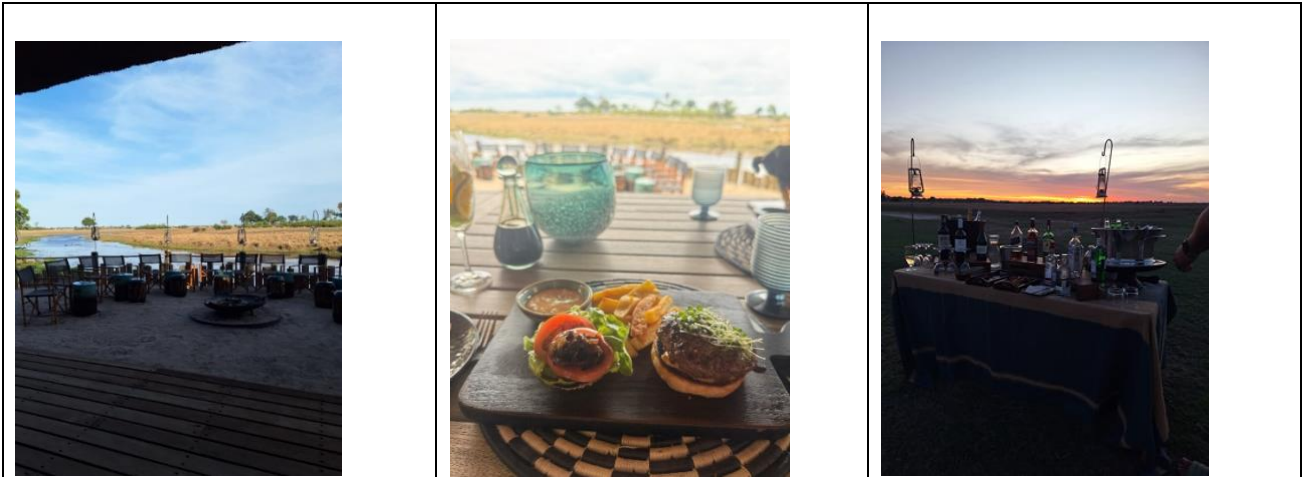
## GENERAL UPDATE

**Water levels permitting the following activities as of 19 March 2025:**

Camp	Mokoro	Boating	Barge
<b>Kwedi Concessions</b>			
Little Vumbura	x	x	
Vumbura Plains	x	x	
<b>Jao Reserve</b>			
Jao	x	x	
Jacana	x	x	
Kwetsani	x	x	
Little Tubu	x		
Pelo	x	x	
Tubu Tree	x		
<b>Qorokwe</b>			
Qorokwe	x		
<b>Linyanti Wildlife Reserve</b>			
DumaTau		x	x
King's Pool			
Linyanti Tented Camp			
Little DumaTau		x	x
Savuti		x	
X – Activities are currently available at these camps.			

## FIRST-HAND FEEDBACK

<b>Destination:</b>	<b>King's Pool</b>
<b>Participants:</b>	Annah Kekana Zanele Nodwele Ashley Thomas Wayde van Heerden
<b>Suits which type of traveller:</b>	Couples, honeymooners, groups and single travellers.
<b>Recommended activities:</b>	The game drives offered up-close encounters with wildlife in their natural habitat. The water was low so we did not experience Queen Silvia; walking is also possible however, when the vegetation is thinner and lower.
<b>Cuisine:</b>	A la carte style, wholesome meals. A hit for us was the home-made burger.
<b>Highlights during visit/stay:</b>	The rooms are beautifully designed, offering a perfect blend of comfort and style. We enjoyed our surprise sunset drinks stop, taking in the breath-taking views. The staff were incredible – friendly, helpful, and always ready to make our stay special. Evenings by the firepit, overlooking the water, were magical. And the food? Absolutely delicious at every meal.



<b>Destination:</b>	<b>Tubu Tree Camp</b>
<b>Participants:</b>	Annah Kekana Zanele Nodwele Ashley Thomas Wayde van Heerden
<b>Suits which type of traveller:</b>	Couples, honeymooners, groups, single travellers
<b>Recommended activities:</b>	The game drives were exciting, again offering close-up encounters with wildlife in their natural habitat. Experienced a mokoro ride (water levels allowing), gliding peacefully through the water and enjoyed a boat excursion, also dependent on the water levels. Each activity provides a unique way to connect with the stunning surroundings.
<b>Cuisine:</b>	Wholesome delicious food
<b>Highlights during visit/stay:</b>	The tents are beautifully designed, offering both comfort and a touch of luxury in the wild. One evening, we stopped for sundowner drinks by a waterhole, where we were lucky enough to watch giraffes come to drink – truly magical. Our guide, Delta, was incredible, sharing his knowledge and making every moment special. The swimming pool, overlooking the open plains, offered breathtaking views, especially when the area is inundated during high water season – it was an unforgettable sight.



<b>Destination:</b>	<b>Mokete</b>
<b>Participants:</b>	Annah Kekana Zanele Nodwele Ashley Thomas Wayde van Heerden
Suits which type of traveller:	Couples, honeymooners, single travellers
Recommended activities:	The game drives were an unforgettable experience, offering close encounters with herds of buffaloes and elephants. Each drive was filled with excitement as we explored the vast landscapes of the area.
Cuisine:	The buffet style dining was a feast for the senses, with a wide variety of dishes to choose from. Each meal offered something for everyone, from fresh salads to hearty mains and delicious desserts. The selection was always plentiful. The relaxed atmosphere made it the perfect setting to enjoy a meal at our own pace.
Highlights during visit/stay:	The rooms are beautifully designed, very comfortable, stylish with inverter-powered air conditioners to keep the temperature just right – it was the perfect retreat after a day of adventure. One of the most unforgettable moments was witnessing thousands of buffalos at different sightings – each encounter was absolutely insane, the sheer number and power of the herds leaving us in awe. The helicopter transfers were amazing, afforded us incredible views of the Mababe Depression.

