

WILDERNESS

# USAWA SERENGETI

## AFRICA'S GREATEST SPECTACLE

Imagine an endless horizon. Powder blue skies stretching over grassland as far as the eye can see... an abundance of wildlife: grazing, drinking, breeding. Moving as one. From the tiny dung beetle that fertilises the soil, to the topi that feed in the valleys. From the prides of lion that rest beneath acacia trees between hunts, to the hyenas and jackals that pick at the bones which lie scattered across the savannah. Every species in the Serengeti lives in perfect harmony with this one beside it. It is this balance, 'usawa' in Kiswahili, that ensures this phenomenal ecosystem functions in perfect symbiosis. Always moving. Always changing. Always in balance.

WILDERNESS USAWA SERENGETI | TANZANIA

## CONTENTS

01 AN ICONIC SAFARI DESTINATION

02 EXTRAORDINARY ABUNDANCE

03 A LUXURY MOBILE CAMP

04 WILDERNESS USAWA SERENGETI

05 PLAN YOUR ITINERARIES

06 TOOLKIT

## AN ICONIC SAFARI DESTINATION

One of Africa's seven natural wonders, Serengeti National Park is home to the continent's most fascinating wildlife phenomenon: the Great Migration. At 15,000 square kilometres, Serengeti National Park sees two million wildebeest, zebra, gazelle and other plains game journey through the park in search of grazing grounds and water. Following the unpredictable rain, the constantly moving throng migrates from the south, focusing the breadth of the plains here as the animals, traversing intently on heading to the north of the park, they then head back south again, breeding and birthing along the way. More than 300,000 births and dozens of death-defying river crossings mean constant predator-prey interaction on the Serengeti's plains – providing a banquet for lions, hyenas and crocodiles.



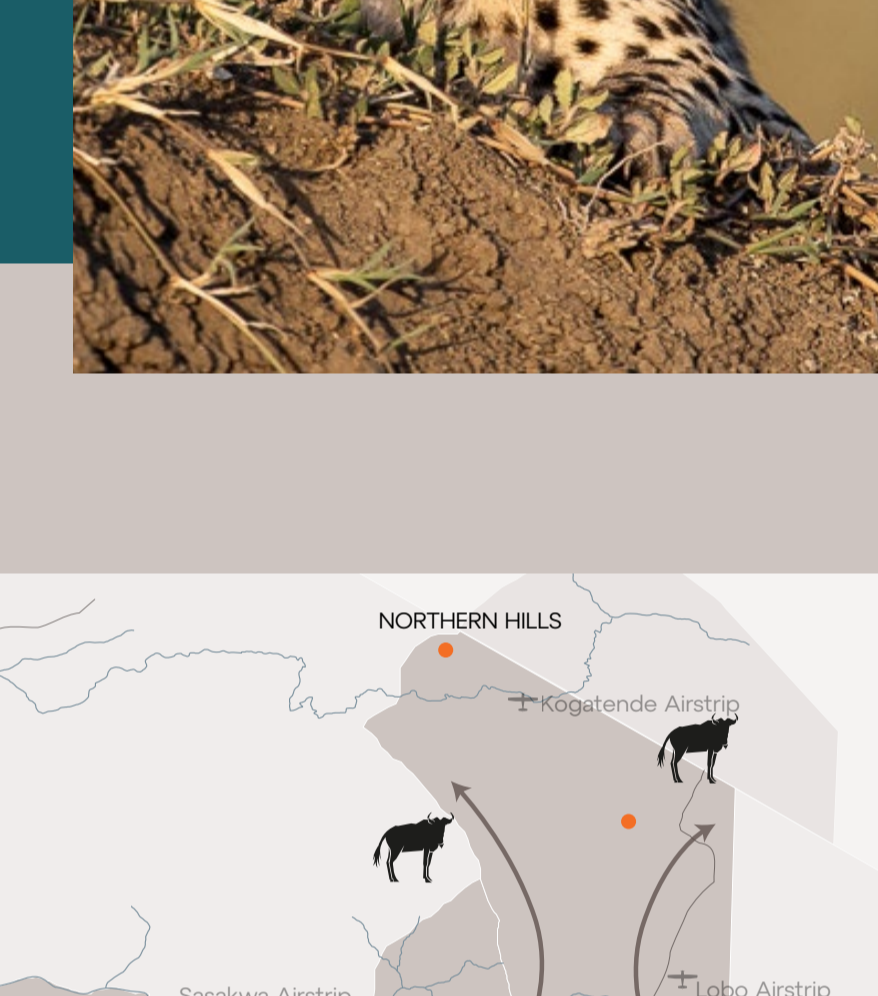
- Wilderness Usawa Serengeti Seasonal Location
- International Airport
- Airstrip
- Protected Area
- Water
- River
- Roads

## 02

## EXTRAORDINARY ABUNDANCE

Two million animals. 1,000 kilometres. Uncountable, unforgettable safari moments. Though wildebeest are the most abundant on the plains, the Serengeti hosts exceptional diversity, including some 29 species of herbivores, including elephant, buffalo and rhino. This abundance of prey attracts 28 species of small and large predators, and on the open plains, drama unfolds with ease. Prides of lion split the herds, taking down wildebeest with ease. Cheetahs pick off the faster Thomson's gazelles while crocodiles prey on the brave, the first who dare to cross the rivers. It's wildlife on an unmatched scale, a spectacle seen nowhere else on Earth.

Of the more than 500 avian species found in the park, some endemic specials to look out for are the grey-breasted spurfowl, Schalow's wheatear, red-throated tit, rufous-tailed weaver, grey-crested helmetshrike, Schalow's turaco and the silverbird.



*The vastness of the Serengeti is unmatched: 1.5 million hectares of wide-open plains, host to wildlife numbers on a scale seen nowhere else on Earth.*

## HABITATS

**GRASSLAND PLAINS**  
Vital grazing for migratory plains game

**WOODLANDS**  
Secure habitat for smaller predators and birds

**RIVERINE FORESTS**  
Dense forests of evergreen trees along the few rivers

**ROCK KOPJES**  
Distinctive rocky outcrops, favoured by lions as they provide good vantage points over the plains

## 03

## A LUXURY MOBILE CAMP

Wilderness Usawa Serengeti moves with the herd. As the seasonal migration travels throughout the year across the length and breadth of Serengeti National Park, two camps are set up in key locations in the park. Mobile, yet completely luxurious, the Wilderness Usawa Serengeti experience offers maximum action without compromising on comfort. We're close enough to the migratory herds, but set away from the high-density tourist areas. The exquisite design and mindful décor of Wilderness Usawa Serengeti's tented camp add a thought-provoking aspect to our guests' very remote and private East African experience.



## ACTIVITIES

**GAME DRIVES**  
Morning, afternoon or full-day drives can be arranged



**GUIDED WALKS**  
Walks begin right from camp (including children 11 and older)



**BIRDING**  
Home to more than 500 species, the Serengeti is a birding hotspot



**STARGAZING**  
The night skies are as vast as the plains in the Serengeti

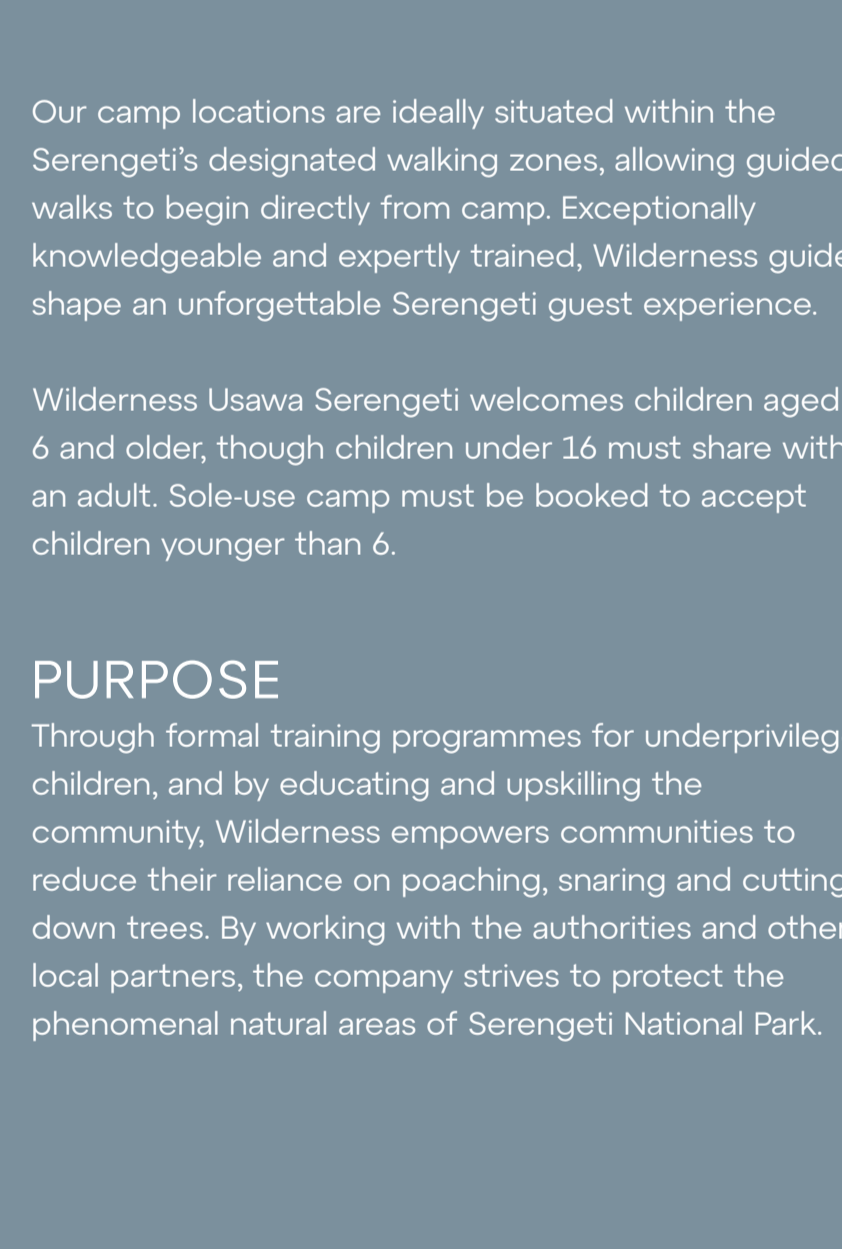


**HOT AIR BALOONING**  
Soar over endless herds moving across the Serengeti's plains (T's & C's)



## WILDERNESS USAWA SERENGETI SEASONAL LOCATIONS

- Kusini (south): December – March
- Ngarananyuki/Gol Kopje area (east): February – March
- Grumeti (west): June – July
- Bologonja (north): July – November
- Lamai (north): July – November



## 04

## WILDERNESS USAWA SERENGETI

**WHAT'S IN A NAME?**  
Usawa means "balance" in Swahili. The chaos of thousands of animals driven by thirst and hunger, desperate to cross rivers, yet all moving in a purposeful direction as one. Through birth and death, rain and drought, balance is restored on the plains. Wilderness Usawa Serengeti is far from the crowds, yet close enough to the action.

**MOVING WITH THE HERD**  
Just like the herds, we adapt. The flexibility of our sublime Wilderness Usawa Serengeti camp allows us to move at short notice between a number of key locations across the Serengeti, for the best feasible access to the unfolding drama.

Intimate, exclusive, exceptional. Wilderness Usawa Serengeti accommodates 12 guests in six en-suite safari tents (including a two-tent family configuration), and can be booked for sole use. As the camp set up is completely mobile, no permanent fixtures are left behind when the camp moves, leaving a light footprint on the Earth. The camps are completely solar powered, with rechargeable lights and charging stations in the rooms, as well as Wi-Fi and hot water.

Our camp locations are ideally situated within the Serengeti's designated walking zones, allowing guided walks to begin directly from camp. Exceptionally knowledgeable and expertly trained, Wilderness guides shape an unforgettable Serengeti guest experience.

Wilderness Usawa Serengeti welcomes children aged 6 and older, though children under 16 must share with an adult. Sole-use camp must be booked to accept children younger than 6.

## PURPOSE

Through formal training programmes for underprivileged children, and by educating and upskilling the community, Wilderness empowers communities to reduce their reliance on poaching, snaring and cutting down trees. By working with the authorities and other local partners, the company strives to protect the phenomenal natural areas of Serengeti National Park.

## FACILITIES



6 TENTS



SOLAR POWER



WI-FI



## 05

## PLAN YOUR ITINERARIES

### JOURNEY WITH WILDERNESS

Combine a Serengeti safari with Northern Tanzania's other exceptional attractions; include a visit to the iconic Ngorongoro Crater, Tarangire and Lake Manyara. For the more adventurous, explore Western Tanzania's Mahale, where chimpanzees live on the shores of Lake Tanganyika, and combine it with a Wilderness Usawa Serengeti safari.

**From USD950 per person per night**  
*\*Rates as of Jan 2025*

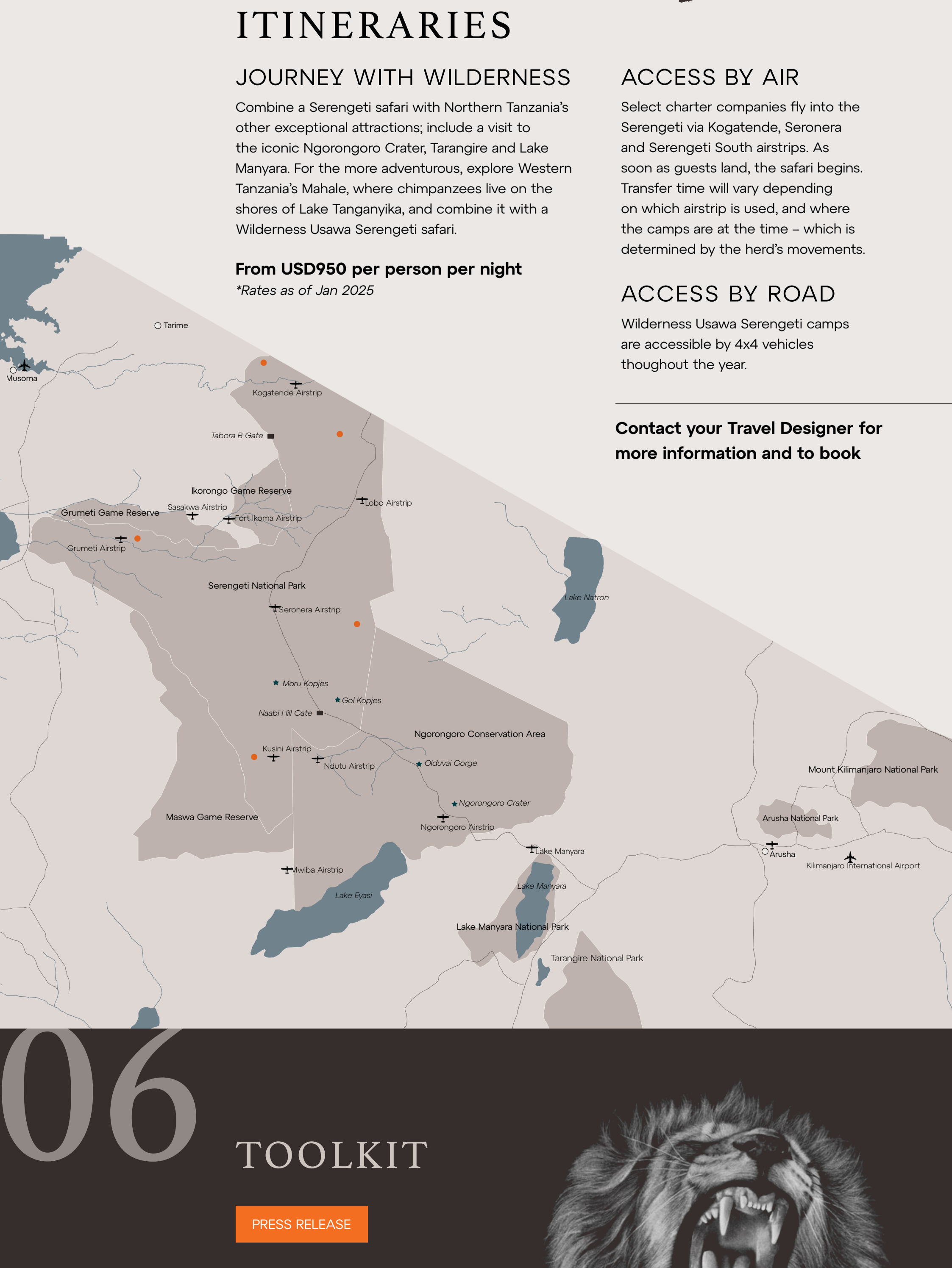
### ACCESS BY AIR

Select charter companies fly into the Serengeti via Kogatende, Seronera and Serengeti South airstrips. As soon as guests land, the safari begins. Transfer time will vary depending on which airstrip is used, and where the camps are at the time – which is determined by the herd's movements.

### ACCESS BY ROAD

Wilderness Usawa Serengeti camps are accessible by 4x4 vehicles throughout the year.

Contact your Travel Designer for more information and to book



## 06

## TOOLKIT

PRESS RELEASE

IMAGES

WETU

SIGHTINGS

