



WILDERNESS

THE BEST OF NAMIBIA

SPOTLIGHT ON NAMIBIA





As Head of Sales at Wilderness Namibia, Joryn Barnard's role embodies her deep-rooted passion for Namibia and its people. Her dedication to diverse cultures further fuels her commitment to preserving Africa's heritage. As someone who is no stranger to the Wilderness family, Joryn brings a wealth of experience and boundless enthusiasm to her role.





WILDERNESS ITINERARY

WILDERNESS CAMPS

- 2 nights Little Kulala
- 3 nights Damaraland
- 3 nights Hoanib Skeleton Coast Camp
- 2 nights Serra Cafema

Wilderness Little Kulala



11 Tents
(1 family)



Air
conditioning



Private plunge
pool



Nature
drives



Quad biking



Electric fatbike
cycling



Spa
(extra cost)



Hot-air ballooning



Guided nature
walks

Place: A welcome oasis situated on the dry Auab riverbed in the Kulala Wilderness Reserve, Little Kulala celebrates the splendour and solitude of the Namib Desert. Excursions to Sossusvlei (via a gate exclusive to Wilderness vehicles), nature drives, walks and eco-sensitive quad biking, explore this fascinating landscape. A balloon safari (at extra cost) offers an awe-inspiring experience soaring silently above the desert.

Accommodation: Inspired by Dead Vlei, the design of the eleven luxury desert suites (10 twins and one family unit) now offers improved airflow to the brick and glass accommodation set under thatch. Each suite features a spacious deck, sala and private plunge pool, merging seamlessly into the timeless desert setting. A private rooftop area offers romantic stargazing, and sleep-outs on the bottom deck of each accommodation complete the experience. Interiors illustrate an extension of the desert's natural beauty, replicated in colour choice, palette, decor and art.

WHY LITTLE KULALA? JORYN SAYS...

- Exclusive access: Our private-use gate to the Namib-Naukluft National Park means guests reach Sossusvlei and Dead Vlei before anyone else – making for peaceful, golden-hour dune experiences.
- Aerial adventure: Weather permitting, hot-air ballooning over the vast Namib Sand Sea and its mysterious fairy circles is a once-in-a-lifetime experience, topped off with a champagne breakfast in the dunes.
- Conservation in action: Once overgrazed farmland, the Kulala Wilderness Reserve is now home to thriving desert-adapted wildlife, from oryx and bat-eared foxes to dune larks and barking geckos.
- Desert discovery: Guests can climb Big Daddy dune, explore Sesriem Canyon, traverse the gravel plains by e-fatbike or quad bike, and sleep out under the stars – or simply soak in the stillness of the desert.
- Desert luxury, redefined: Climate-controlled suites offer private plunge pools, rooftop decks for stargazing or romantic dinners, and shaded salas for siestas or sleep-outs – all with uninterrupted views over the Namib.







 WILDERNESS LITTLE KULALA - ACTIVITIES



 WILDERNESS LITTLE KULALA – MAIN AREA





 WILDERNESS LITTLE KULALA - BEDROOM

Wilderness Damaraland



10 tents
(1 family)



Hybrid system



Community
Experience



Nature drives



Guided nature
walks

Place: Set against the dramatic backdrop of the Huab Valley, Wilderness Damaraland Camp is situated in one of the most untamed wilderness areas in Namibia. Simple, beautiful and open to the desert, the camp offers endless vistas across stark plains, ancient valleys and stunning ochre-purple mountains, all waiting to be explored.

Accommodation: Damaraland Camp's inviting main area has a sparkling pool to cool off in, an open campfire, and a traditional outdoor boma for evenings of cultural cuisine, song and dance, canopied by countless stars.

Ten elevated adobe-style thatched suites with large decks invite unimpeded vistas across the expansive, geologically extraordinary plains of the Namib Desert here. A spacious family unit ensures complete privacy for memorable moments.

WHY DAMARALAND? JORYN SAYS...

- Otherworldly scenery: Wilderness Damaraland Camp sits in a surreal landscape of flat-topped mountains, wind-carved sandstone, dry riverbeds, and wide, stony plains — like stepping onto another planet.
- Community partnership, in practice: Located in the Torra Conservancy, Namibia's first successful joint venture between community and conservation, the camp is a benchmark in sustainable tourism.
- Rare wildlife: Guided drives and walks reveal desert-adapted elephants, oryx, kudu, springbok and Hartmann's mountain zebra.
- Remarkable geology and ancient culture: Damaraland is known for its rock art. Guests on stays of three nights or more can take a day drive to Twyfelfontein, and and marvel at the San art dating back 6, 000 years.
- Authentic desert comfort: Ten adobe-style thatched suites open onto endless desert views, with a family unit available for privacy. A crystal-clear pool, campfire, and starlit boma dinners complete the desert retreat.












 WILDERNESS DAMARALAND – BEDROOM



Wilderness Hoanib Skeleton Coast Camp



8 tents
(1 family)



100% solar



Skeleton Coast
drive/flight



Nature drives
and walks



Olympus
photography



Research Centre

Place: In a remote area of the Kaokoveld, with gravel-strewn plains and dry riverbeds that draw fascinating wildlife, lies Hoanib Skeleton Coast Camp. Explorations of this isolated yet diverse area take place via game drives along the riverbed's narrow ribbon of vegetation, where a surprising wealth of desert-adapted animals can be found, while the research centre provides further insights. The desolate Skeleton Coast with its shipwreck remains and noisy colonies of Cape fur seals is accessed either by a fascinating drive or flight, depending on the weather.

Accommodation: The eight large tents (including one family unit) and the main area and pool look out over rugged scenery: a wide valley that slopes down to the almost-always dry Hoanib River.

WHY HOANIB SKELETON COAST CAMP? JORYN SAYS...

- A frontier few ever reach: Only accessible by light aircraft, this remote, solar-powered camp lies deep in the Kaokoveld, where gravel plains and dry riverbeds give way to one of the most dramatic and isolated desert landscapes on Earth.
- Where desert meets ocean: A day trip to the wild Skeleton Coast includes a scenic dune drive through oases and flamingo-dotted pans, ending at seal-covered beaches and rusting shipwrecks — with a spectacular flight back to camp (weather permitting).
- Desert-adapted wildlife at its most extreme: Nature drives along the Hoanib River reveal desert lions, brown hyenas, giraffes, elephants and oryx surviving against all odds. Birders can expect regional endemics like Rüppell's korhaan and Benguela lark.
- Refined remoteness: Overlooking a broad desert valley, the camp's elegant, tented suites offer sweeping views and surprising wildlife sightings right from the deck. Designed in harmony with the landscape, Hoanib Skeleton Coast blends high-end comfort with the raw, otherworldly beauty of Namibia's wild northwest.

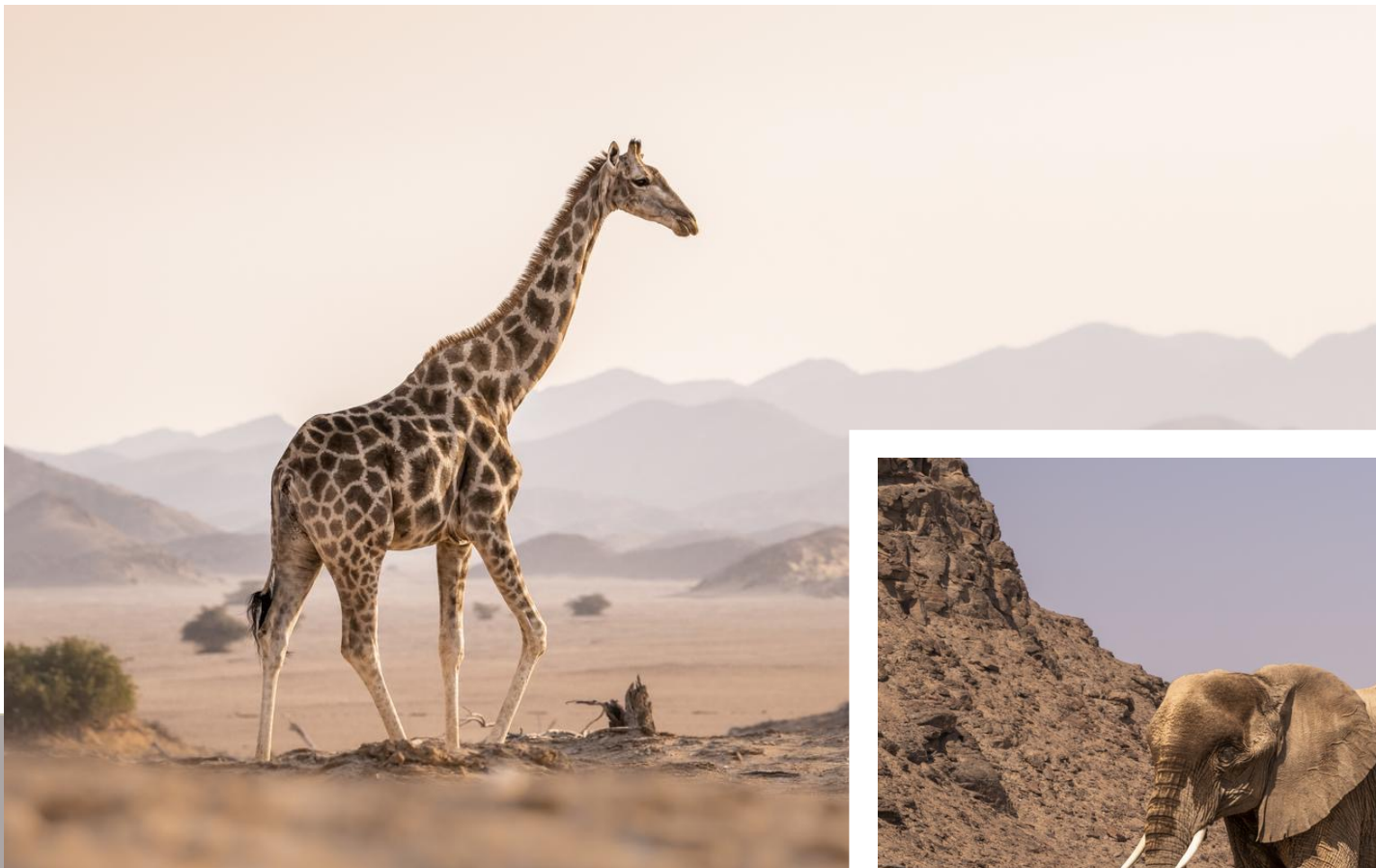






WILDERNESS HOANIB SKELETON COAST CAMP - ACTIVITIES





WILDERNESS HOANIB SKELETON COAST CAMP - WILDLIFE



WILDERNESS HOANIB SKELETON COAST CAMP – MAIN AREA



 WILDERNESS HOANIB SKELETON COAST CAMP – BEDROOM

Wilderness Serra Cafema



8 tents
(1 family)



100% solar



Pool



Nature drives



Quad biking



Boating



Massages



Himba
community visits



Guided
nature walks

Place: Set under trees on the banks of the Kunene River, Serra Cafema is one of the most remote camps in southern Africa. Guests can truly disconnect, unwind and relax to the sound of rushing water, and explore one of the driest deserts in the world. Respectful interaction with a nearby Himba community, fascinating nature walks, boating (water levels permitting), and low-impact guided quad-bike excursions complete the experience.

Accommodation: The eight chalets (including one family unit) are set on elevated decks and crafted in wood, canvas and thatch to create a unique camp that is at one with its surroundings and celebrates the culture of the Himba people. The Ozonganda (Herero, meaning “main area”) affords spectacular views over the Kunene River.

WHY SERRA CAFEMA? JORYN SAYS...

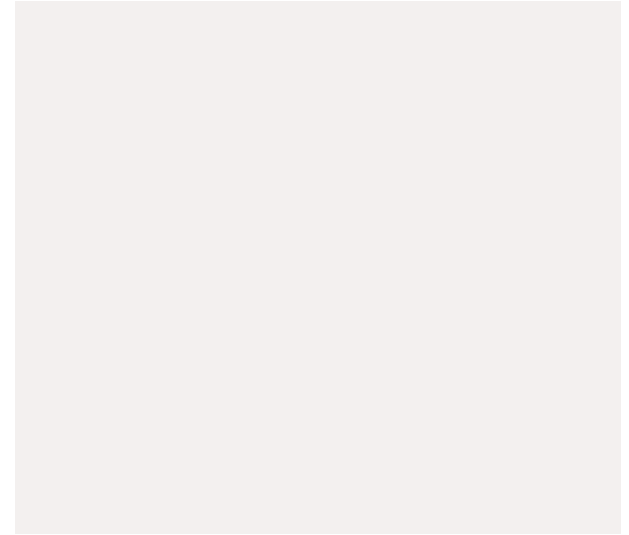
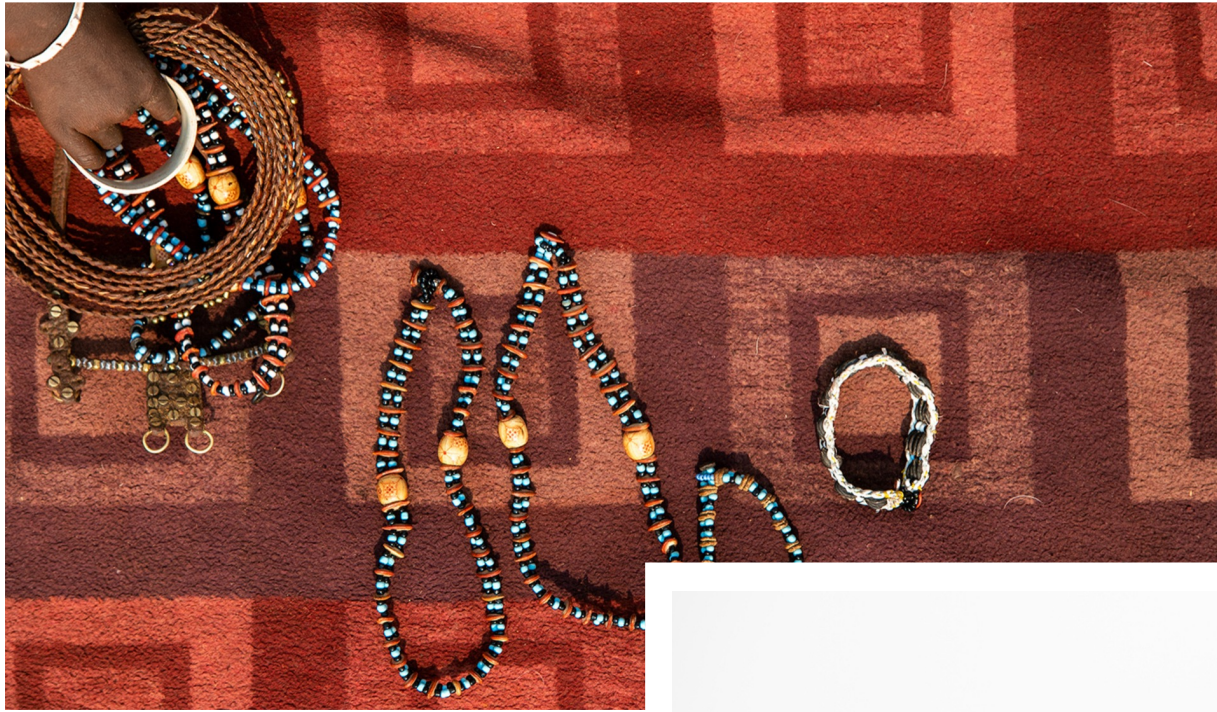
- Exceptional location: Set in Namibia's far northwest, Serra Cafema is one of the most isolated camps in Southern Africa, ideal for clients seeking true seclusion and exclusivity.
- Unique river-desert contrast: Located along the Kunene River, the camp offers seasonal boating, guided nature drives, and dune-sensitive quad biking in one of the country's most geologically diverse regions.
- Authentic cultural experiences: Visits to a neighbouring Himba settlement provide respectful, insightful engagement with Namibia's last semi-nomadic people.
- Strong conservation partnership: Operated on Himba-owned land through the Marienfluss Conservancy, Serra Cafema directly supports community healthcare, education, and employment, while protecting desert-adapted wildlife.
- Serra Cafema is designed for relaxation and a true sense of disconnection, with eight beautifully appointed canvas suites (including a family unit) set on elevated decks that immerse you in the natural surroundings.

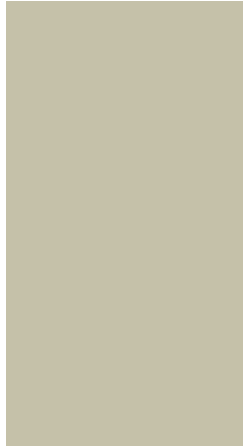


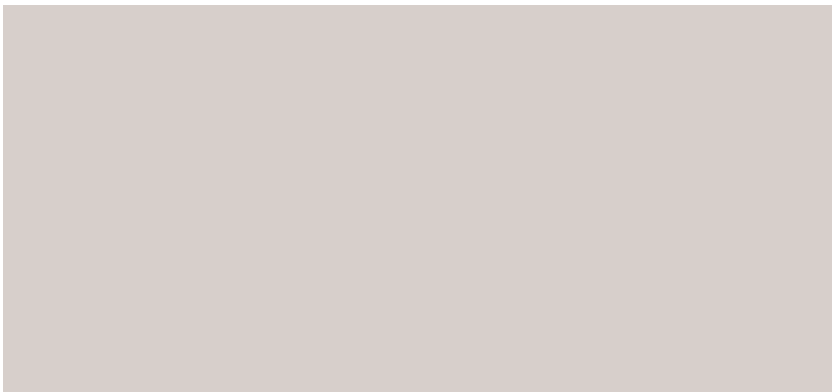


WILDERNESS SERRA CAFEMA – ACTIVITIES









 WILDERNESS SERRA CAFEMA – MAIN AREA



WILDERNESS SERRA CAFEMA – BEDROOM

THANK YOU

Discover Earth's Ultimate, Untamed Places



WILDERNESS

www.wildernessdestinations.com