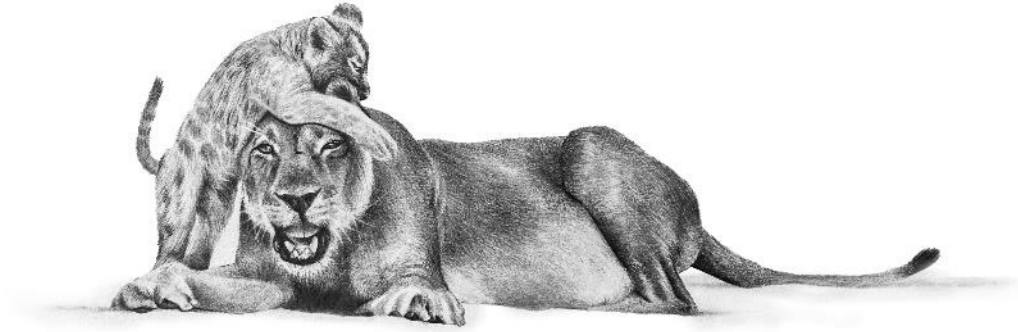




FROM THE FIELD: IMAGES CAPTURED BY OUR GUIDES & STAFF

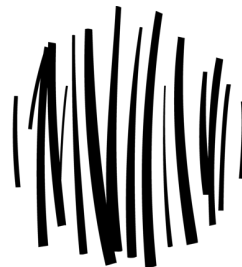
# SPOTLIGHT ON NAMIBIA





Explore our latest collection of sightings from our Namibian regions.  
These images, captured by our skilled guides and guests, offer a glimpse into the raw,  
unfiltered, and unedited ways of the wild.

Each photo shows the wilderness as it truly is – authentic, unpredictable, and unforgettable



W I L D E R N E S S

**Note:** Hold Ctrl and click the play button to open the video in a new browser tab.





# KULALA RESERVE

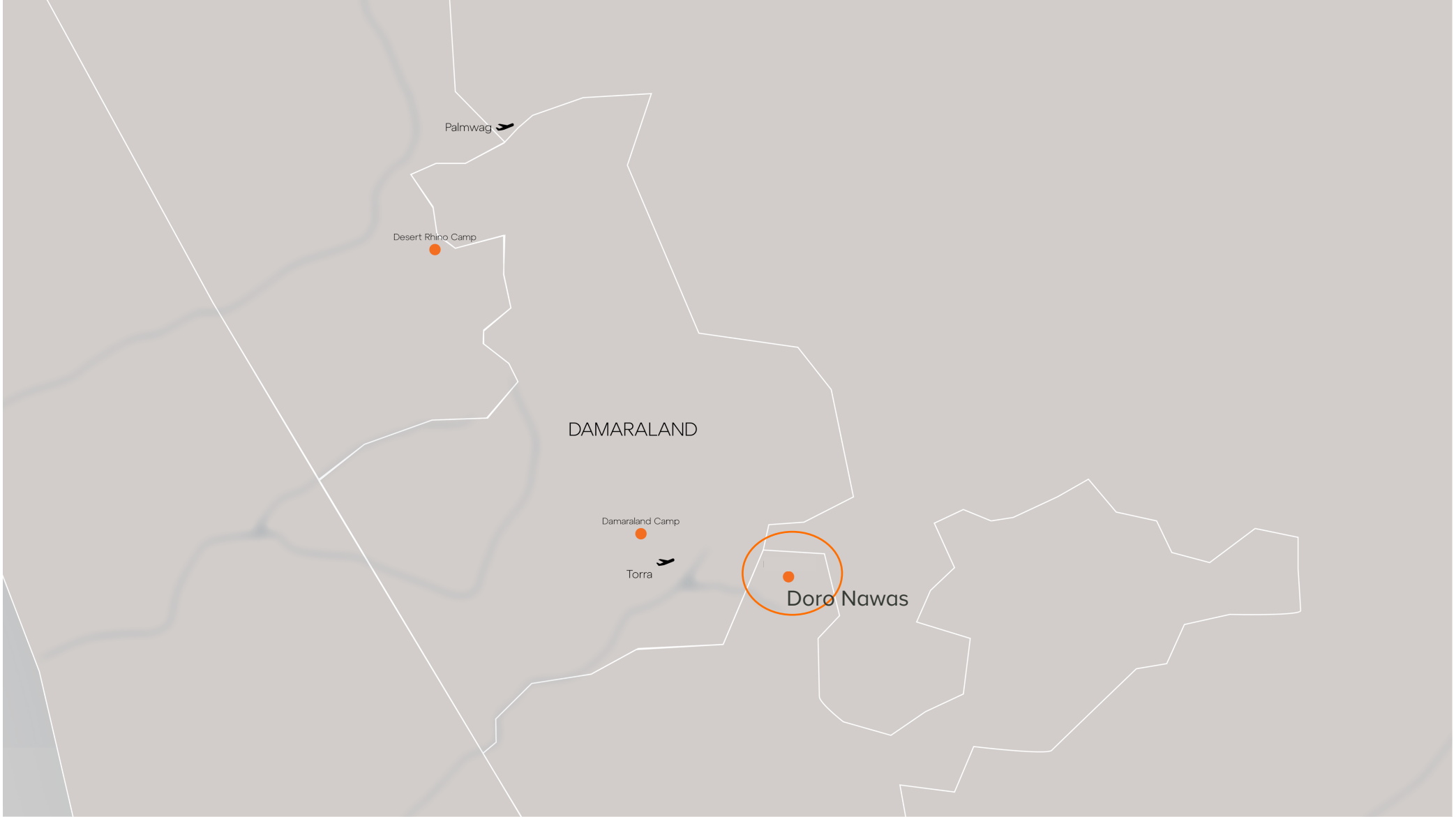




**Photos by Nichola Palmer-  
Wilderness Internal  
Communications Manager**

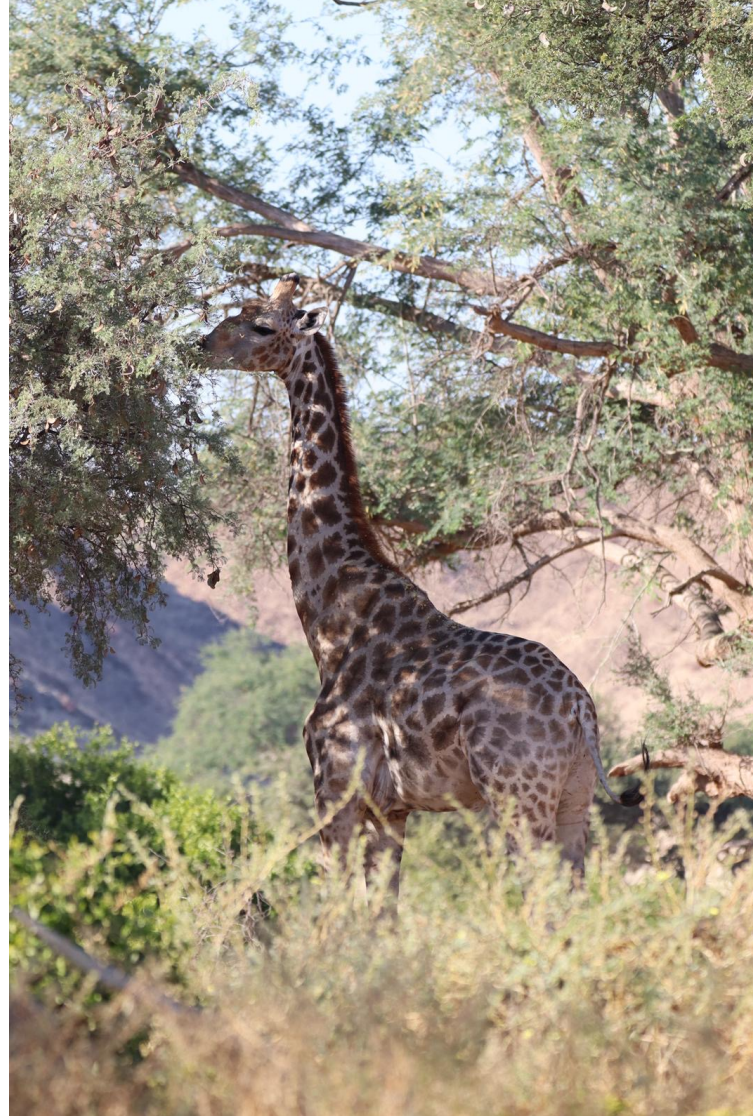
A lucky sighting at Little Kulala: a brown hyena on the move. Typically these very shy animals are seen closer to Hoanib Skeleton Coast Camp.





# DORO NAWAS



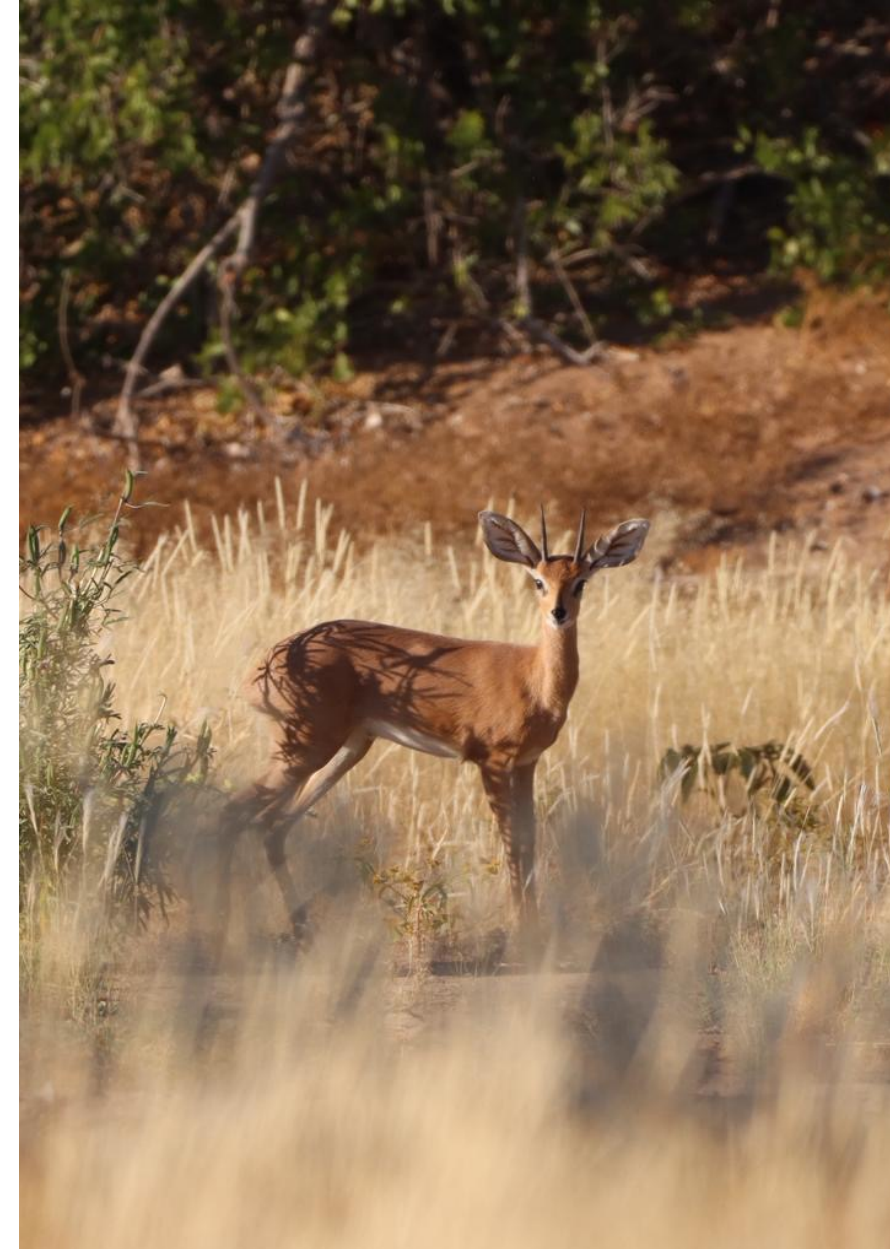


Photographed by guide Sylvester Cloete

Desert-adapted Angolan giraffes thrive near Doro Nawas, a living example of how wildlife can persist in Namibia's tough, beautiful places.







Photographed by guide  
Sylvester Cloete

All things great and small at  
Doro Nawas; a pair of  
ostriches, a Namaqua  
Sandgrouse and a male  
steenbok.



Photographed by guide Sylvester Cloete

Though specially adapted to live in the desert, Namibia's elephant calves are just as playful as their counterparts in other parts of Africa.



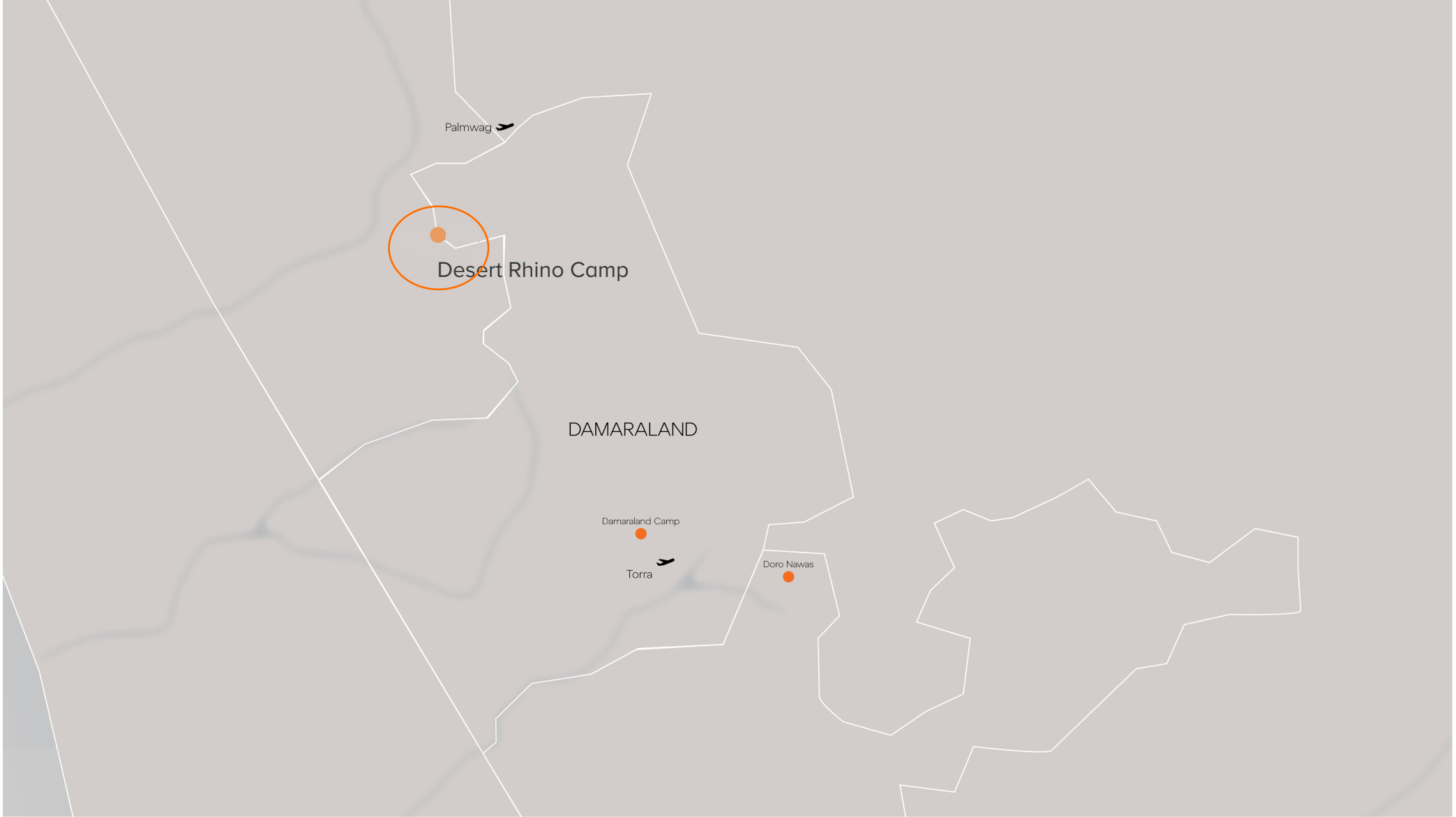


Photographed by  
guide Sylvester Cloete

Elephants use their trunks and tusks, to strip bark, break branches, and even dig for roots and moisture-rich tubers - essential survival strategies in a region with limited vegetation.







# DESERT RHINO CAMP



Photos taken by guide Bons Roman

Wilderness Desert Rhino Camp is set in the expansive 583 000 hectare Palmwag Concession, home to one of the largest free-ranging populations of Critically Endangered desert-adapted black rhino in Africa.





Photo taken by guide  
Bons Roman

Rhinos are the star of the show. Guests have the rare opportunity to join Save the Rhino Trust monitors on a guided walk, or by vehicle







Photos shared by guide  
Bons Roman

Though known for its black  
rhino population, other  
desert-adapted specials are  
frequently seen from DRC,  
including lions and giraffe.

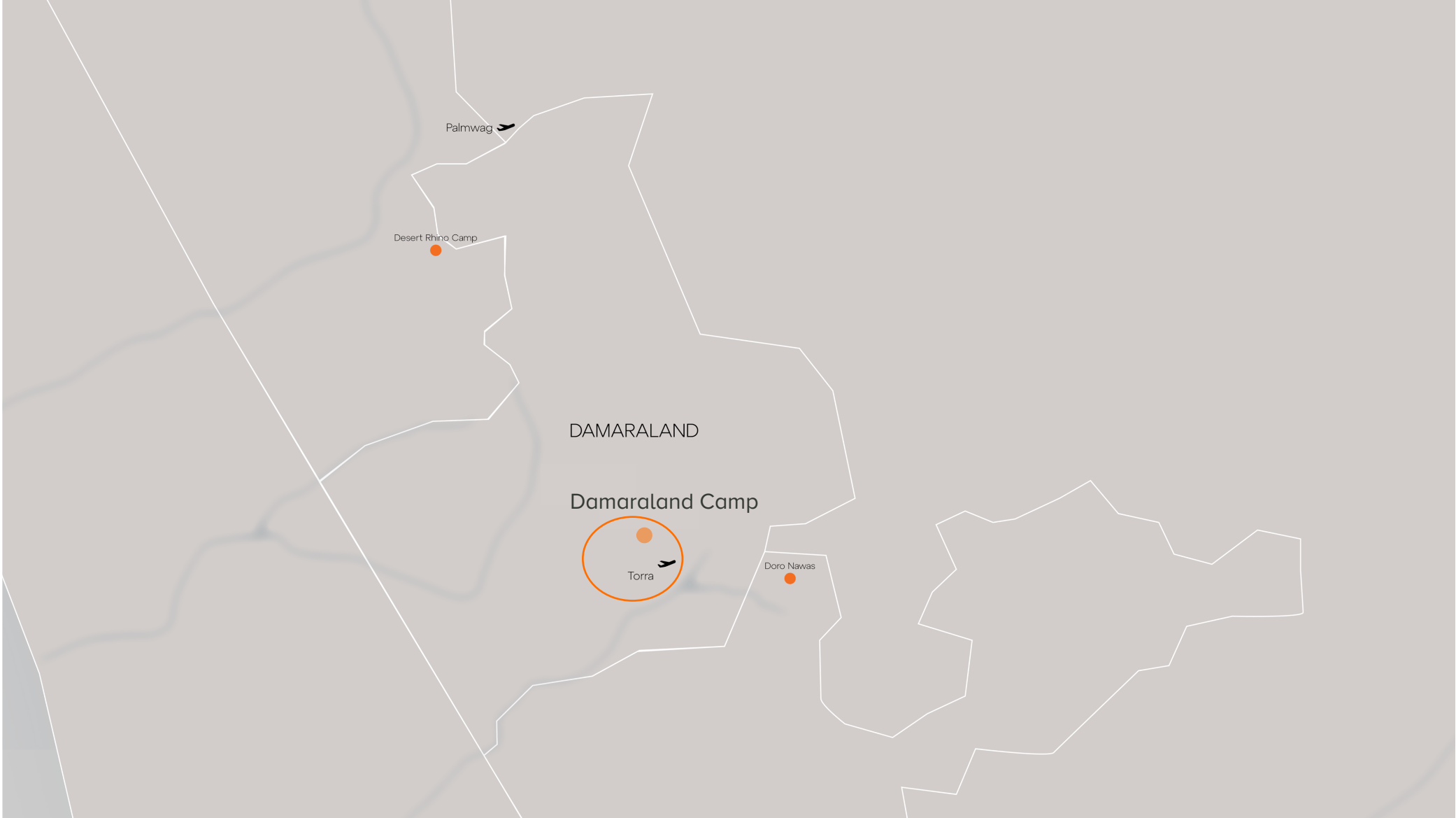




Photos taken by guide Bons Roman

Well-adapted to Namibia's harsh desert environment, ostriches stride through the arid plains with their chicks in tow. These flightless birds rely on speed and sharp eyesight to detect predators, while the chicks – camouflaged and precocial – can run within hours of hatching.





# DAMARALAND CAMP





Photographed by guide Brian Kahengombe

In Namibia's rugged Damaraland, desert-adapted elephants traverse rocky hills and dry riverbeds in search of water and food. These resilient giants have evolved to survive in arid conditions, walking vast distances and feeding on sparse vegetation.





Photographed by guide Brian Kahengombe

Desert-adapted elephants in Damaraland rely on ephemeral water sources such as underground springs and seasonal riverbeds.







# HOANIB SKELETON COAST CAMP





Photographed by guide Bernhard Ndwenda

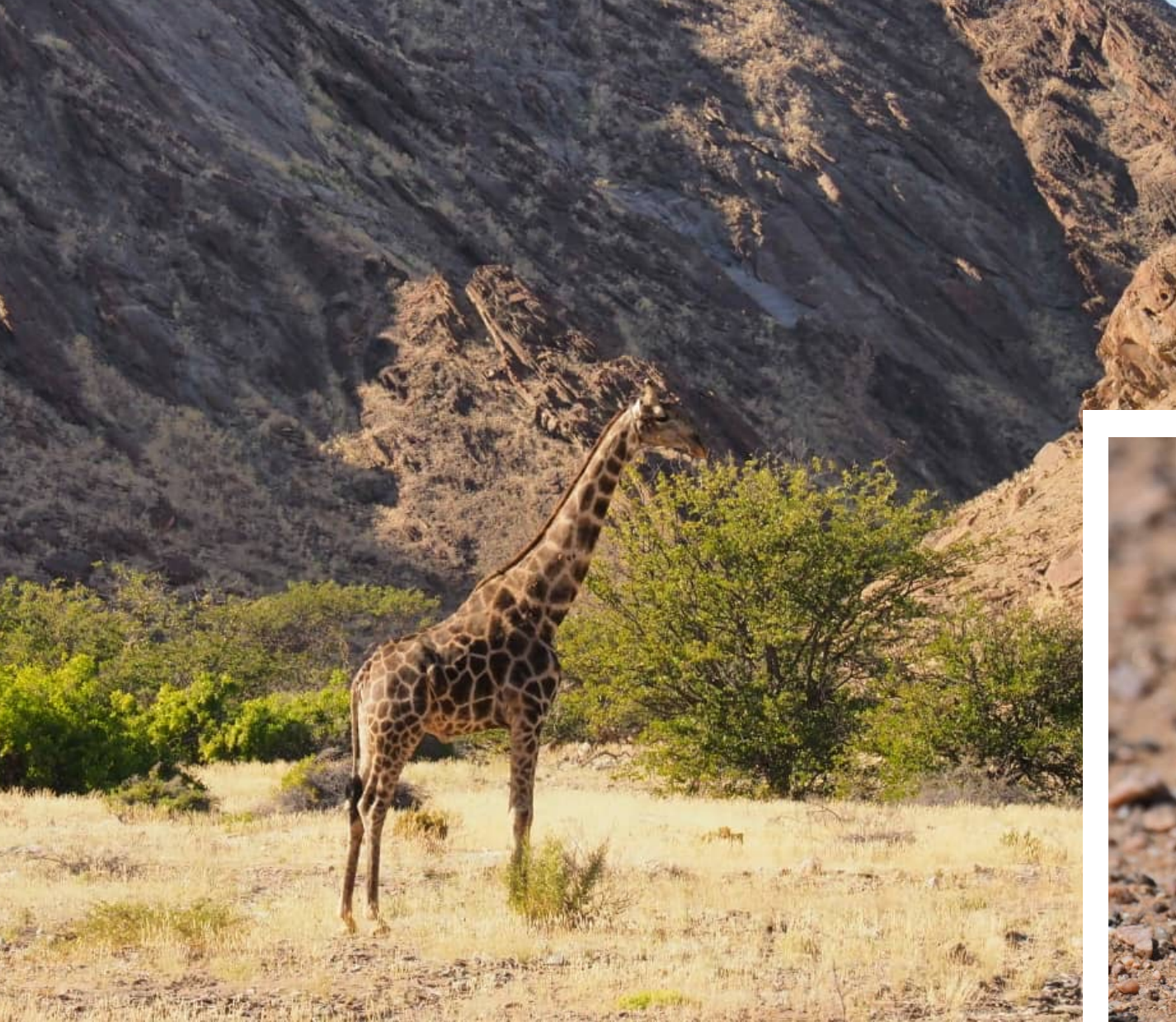
An arid specialist suited to life on the desert floor, the Namaqua chameleon is the only chameleon species adapted to run.





Photographed by guide Bernhard Ndwenda





Photographed by guide Bernhard Ndwenda

From towering giraffes to tiny scorpions, Namibia's wild residents have one thing in common: they're all perfectly adapted to survive the desert extremes.





# THANK YOU

Discover Earth's Ultimate, Untamed Places



WILDERNESS

[www.wildernessdestinations.com](http://www.wildernessdestinations.com)