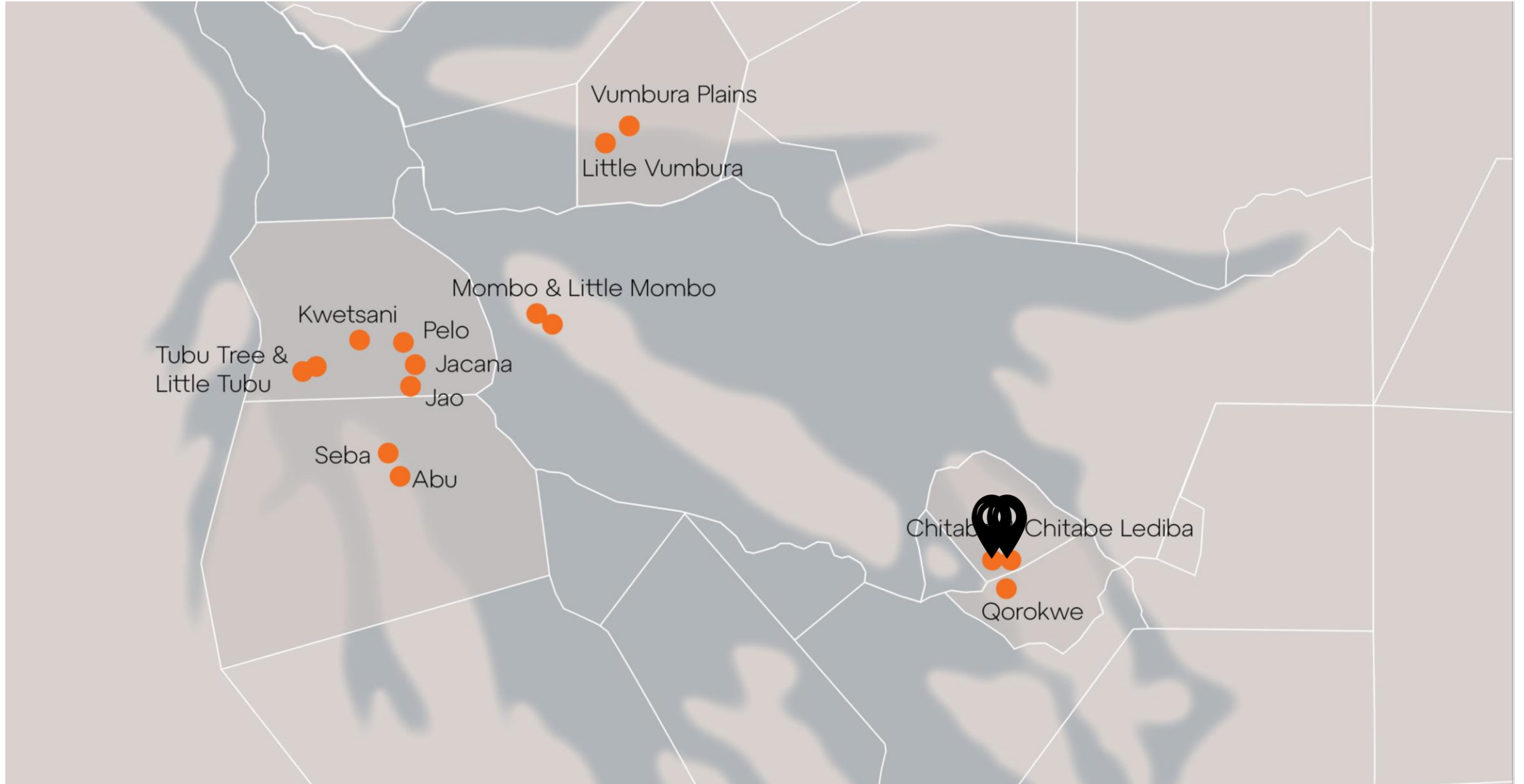




O1

WILDERNESS

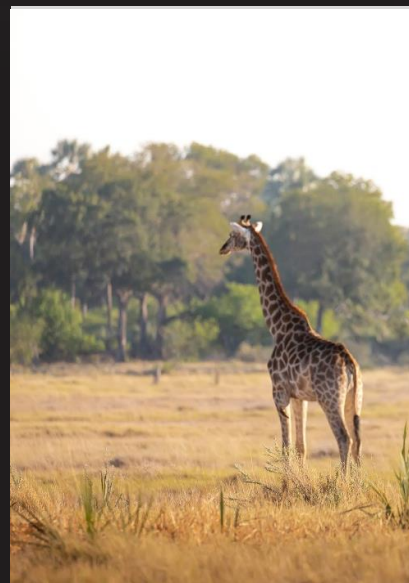
CHITABE AND CHITABE LEDIBA



UNIQUE SELLING POINTS

Chitabe and Chitabe Lediba

- With over half of its northern border embraced by the famed Moremi Game Reserve, Chitabe's prolific wildlife is attracted to the diverse habitats in close proximity. The permanent water from the channels forming its eastern and western boundaries ensures a compact concentration of thrilling game-viewing all year round.
- The large prey densities make Chitabe a stronghold for African wild dogs, lions, leopards, cheetahs and all manner of other predators.
- The dramatic mix of Kalahari and Okavango habitats, with consistent predator-prey interaction, is a photographer's paradise.
- Having completed numerous photographic courses, guides are skilled to assist all levels of photographers.



About Chitabe & Chitabe Lediba



Chitabe
8 tents
Chitabe Lediba
5 tents
(2 family)



100% solar



Pool



Game
drives



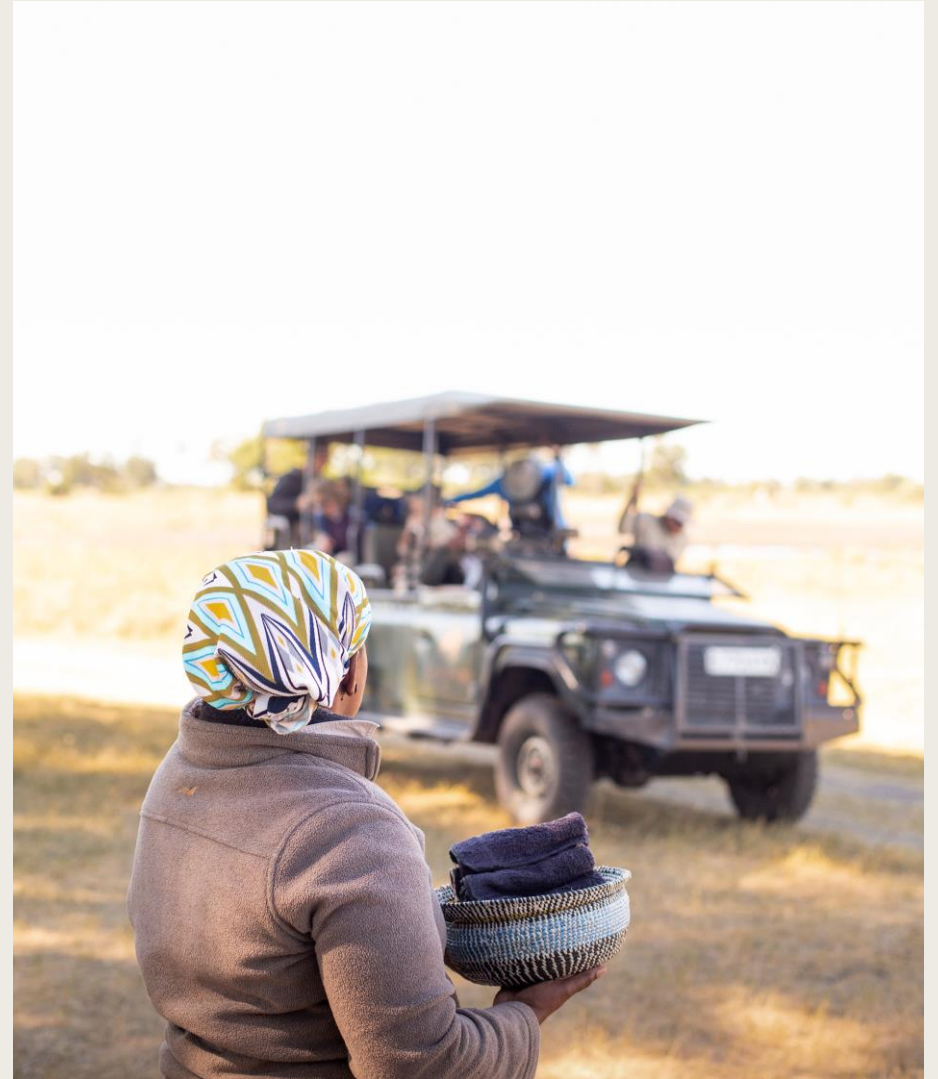
Guided nature
walks

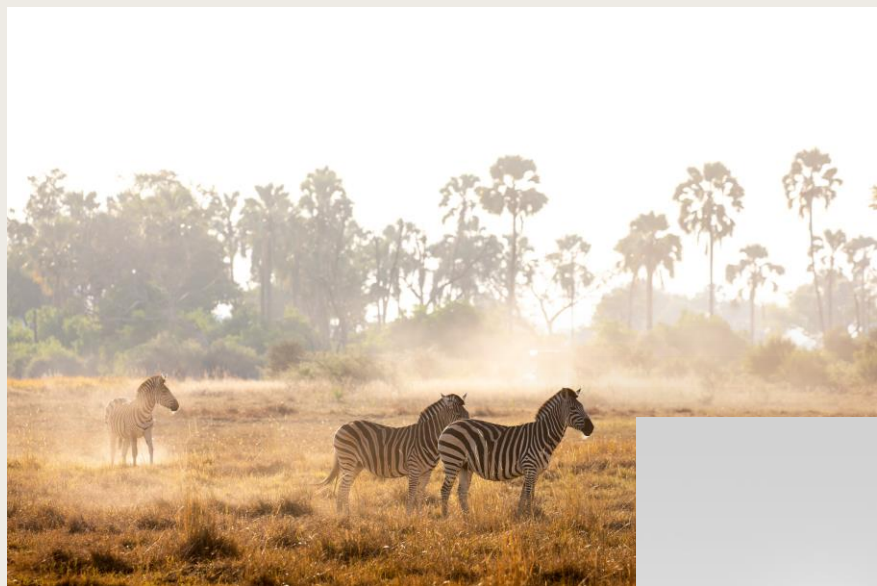


Helicopter
flips

Access to Chitabe & Chitabe Lediba

- Airstrip Name: Chitabe Airstrip
- Duration To Camp: Approximate 40-minute road transfer





CHITABA & CHITABE LEDIBA PURPOSE

Supporting conservation

Chitabe supports Wild Entrust Africa, which serves as an umbrella organisation for all large predator conservation research (lion, leopard, cheetah, hyena and wild dog) in Botswana.

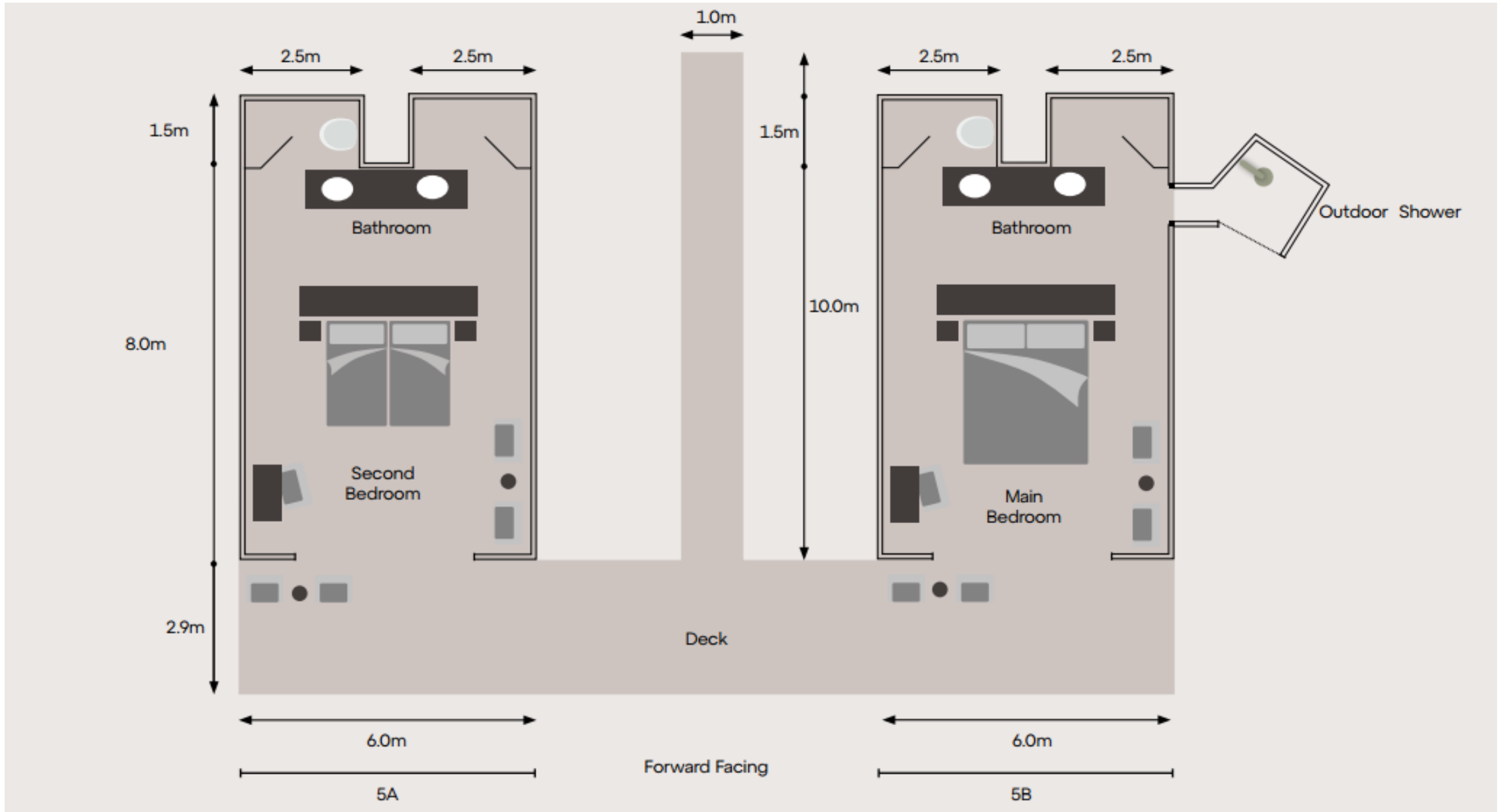
Chitabe is committed to raising the living standards of its employees by a number of means, including annual school education donations and generous profit-share payouts.

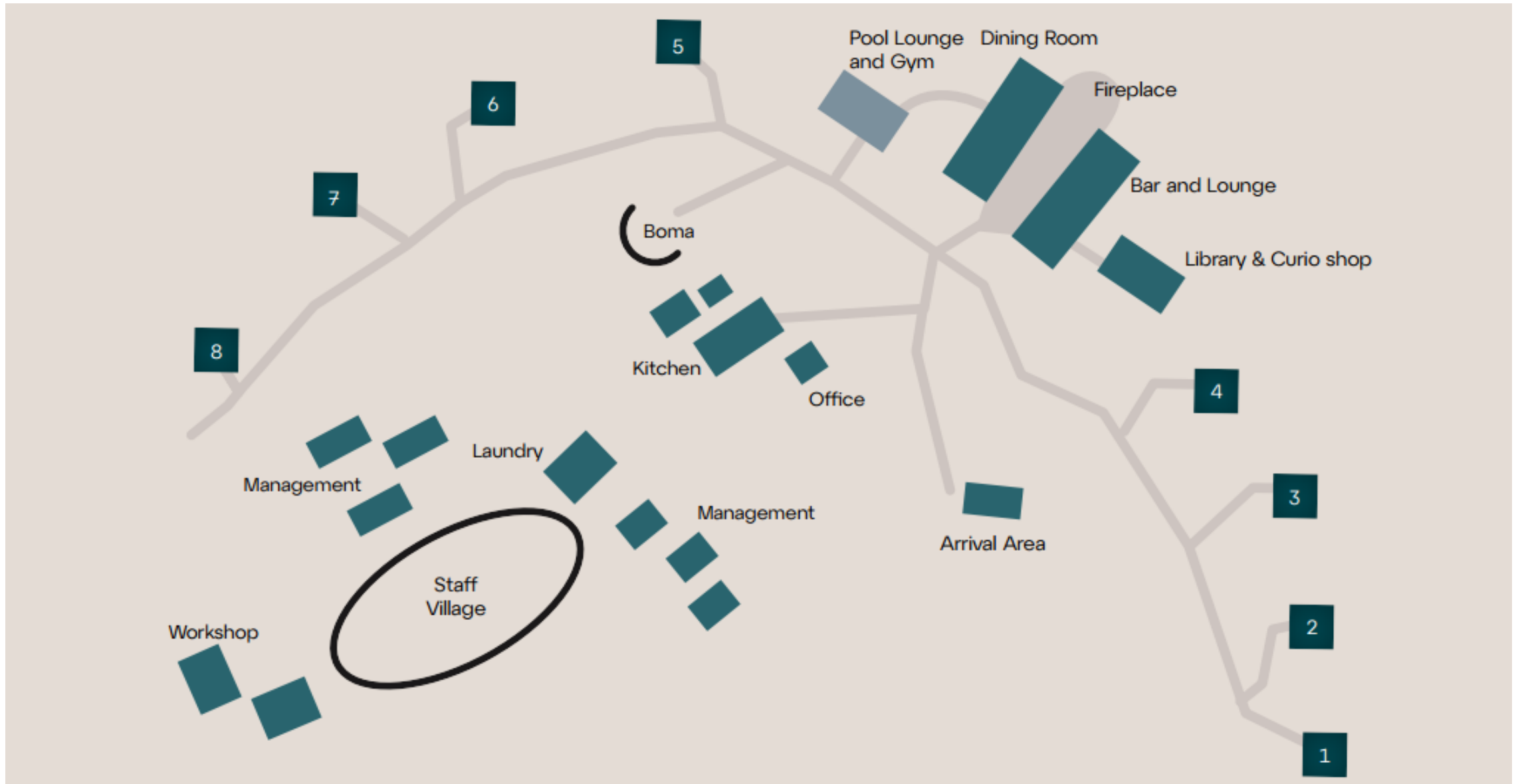
ACCOMMODATION

Personalised touch


- Both camp's warm, generous and authentic feel is sustained by a loyal staff, most of whom have many years of experience, and as such, a profound knowledge of the area and its wildlife.
- The personalised touch and stunning, individually styled tented accommodation is strongly influenced by the owners' (Helene and Dave Hamman) particular interest in wild dogs and photography.











I have been travelling to Botswana for over 30 years now – of all the areas I have visited, over all the years, it is to Chitabe that I return. I was there with my wife and son, and it was a privilege to watch him witness this area and its natural beauty first-hand, and to see the wonder with which he observed it.

Chitabe Guest

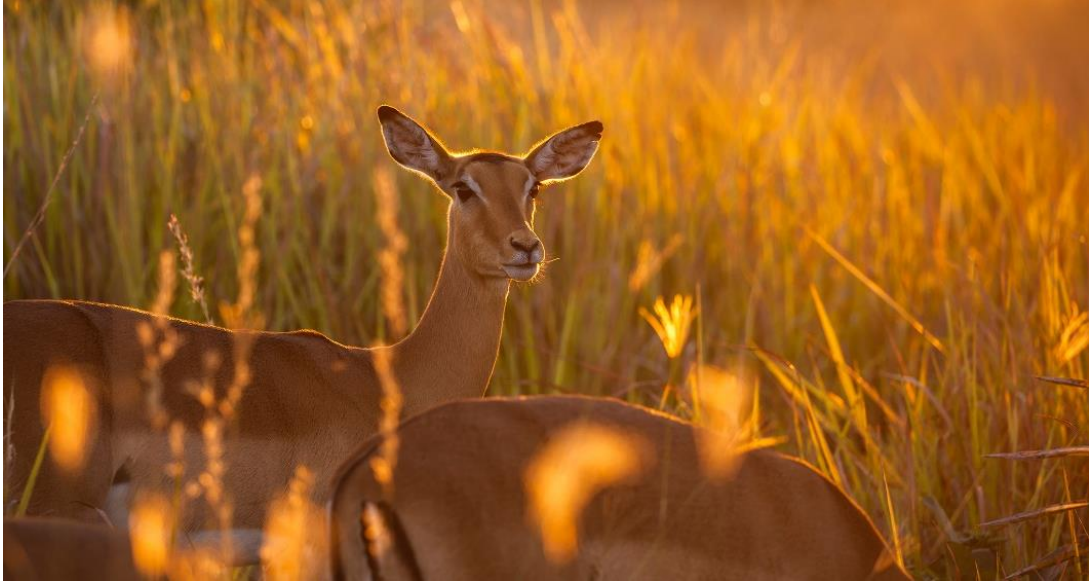


WILDERNESS



LEOPARD











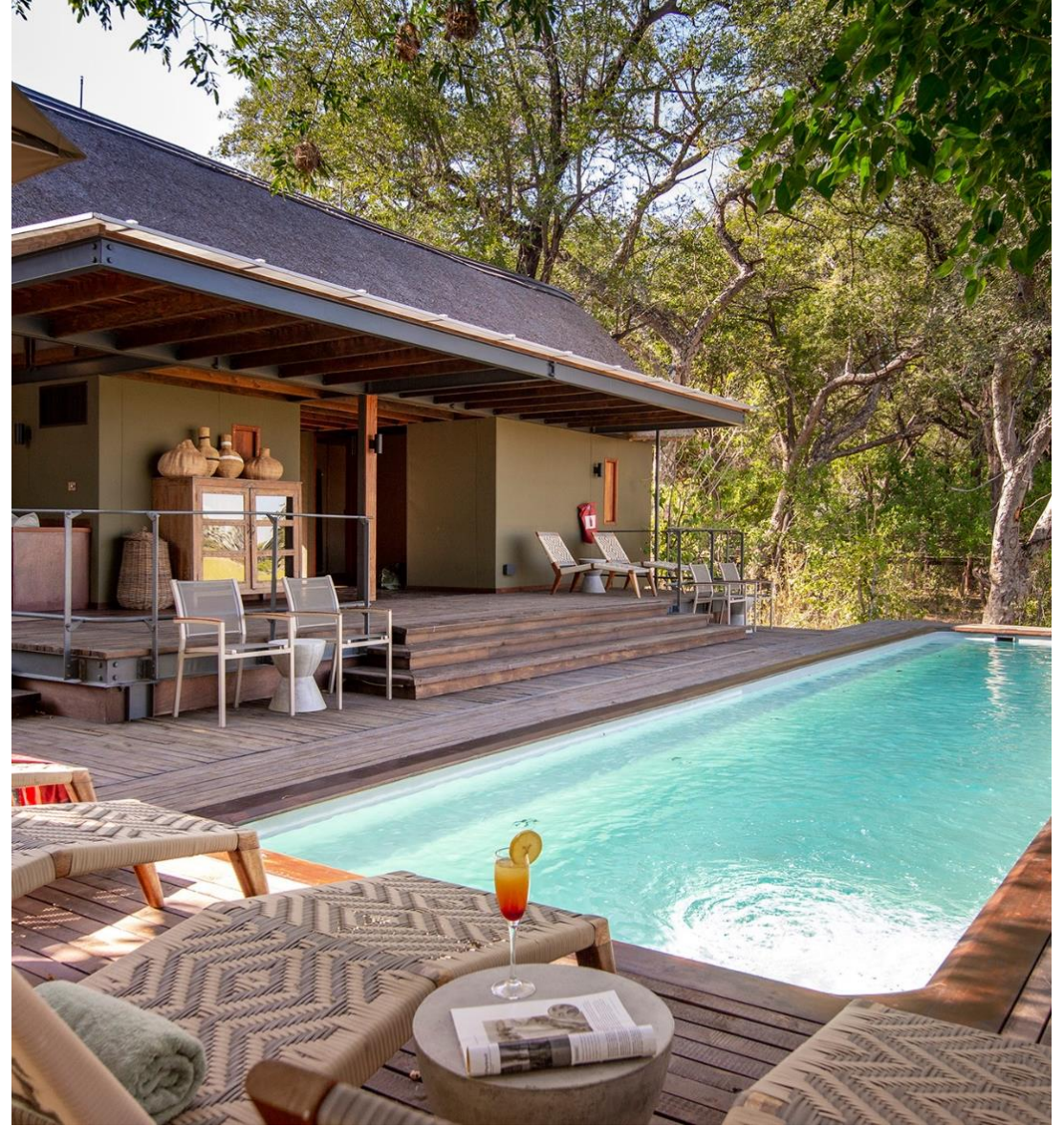


CHITABE DINING AREA



CHITABE LOUNGE







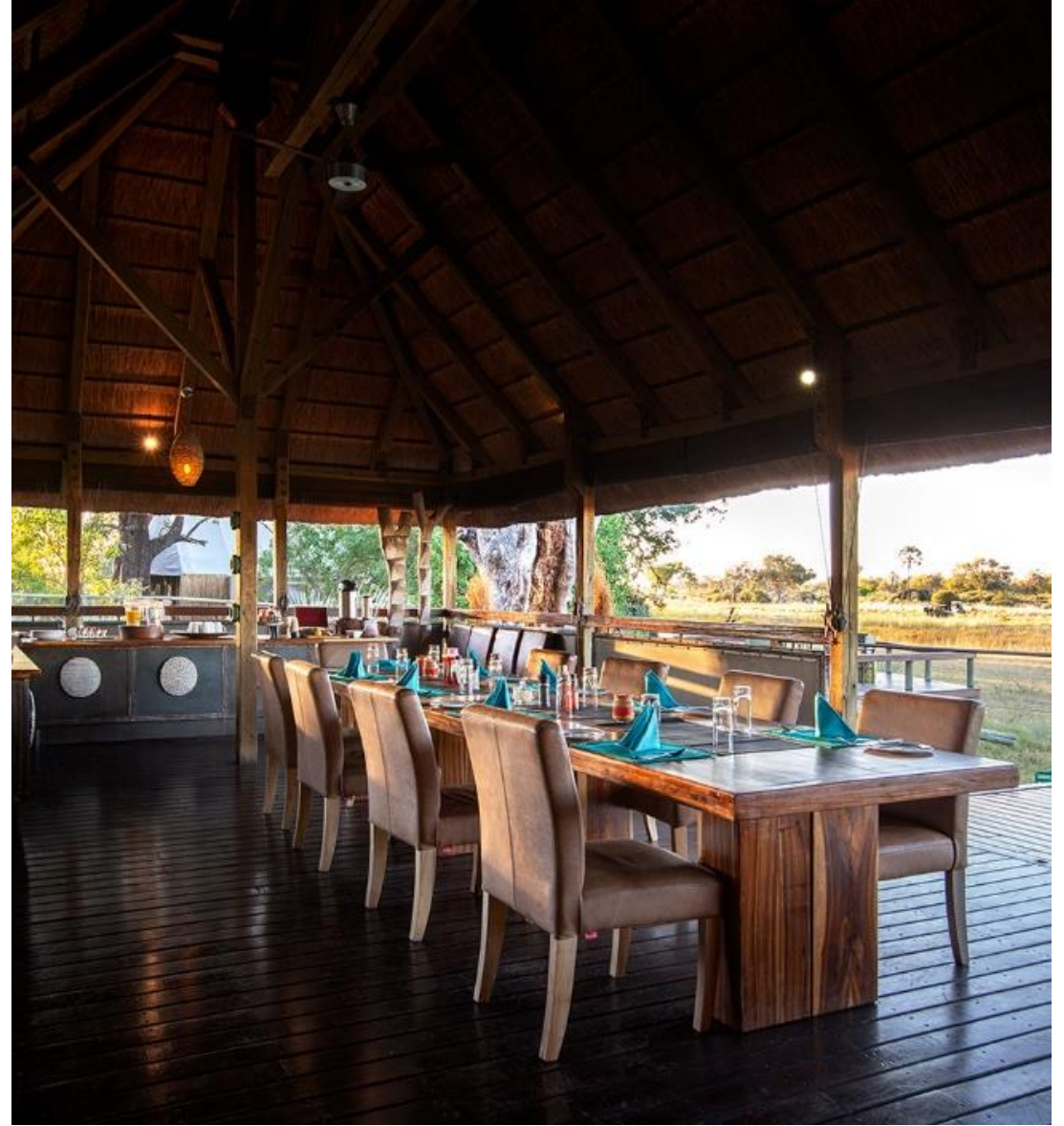
CHITABE BEDROOM



CHITABE BATHROOM



CHITABE LEDIBA LOUNGE & BAR



CHITABE LEDIBA DINING AREA





CHITABE LEDIBA BEDROOM



CHITABE LEDIBA EN-SUITE BATHROOM

THANK
YOU



WILDERNESS