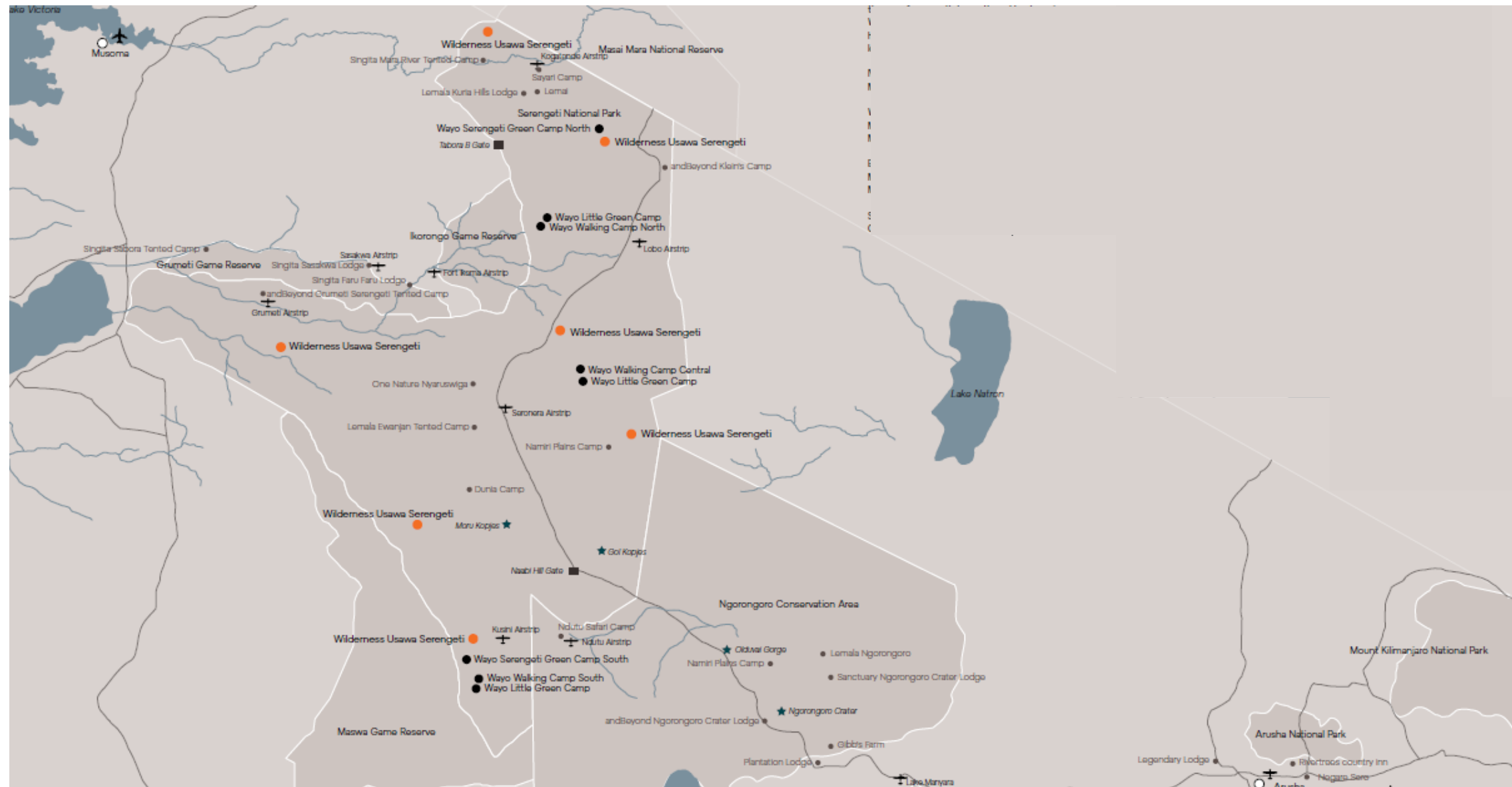




WILDERNESS

USAWA SERENGETI



THE LARGEST HERD MOVEMENT ON EARTH

Migration

As the seasonal migration moves throughout the year from south to north and back again, Wilderness Usawa Serengeti moves with the herds, setting up camp in whichever of the locations mapped here is closest to the action.

NORTHERN HILLS

Mara River Crossings: June - November

WESTERN CORRIDOR

Migrating South: October - January

Migrating North: April - July

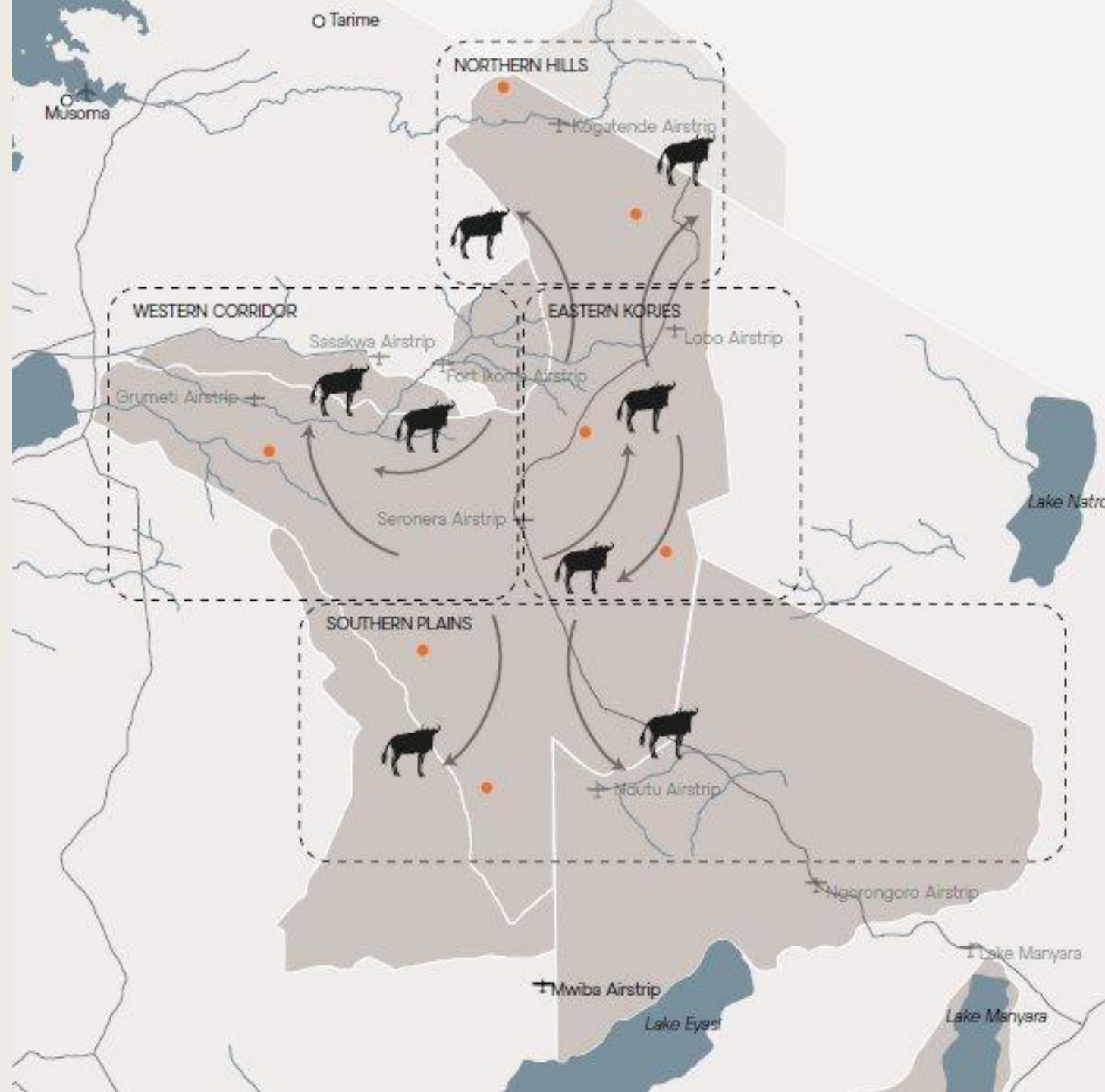
EASTERN KOPJES

Migrating South: October - January

Migrating North: April - July

SOUTHERN PLAINS

Calving season: December - April



UNIQUE SELLING POINTS

Usawa Serengeti

In close proximity to the migratory herds but set away from the high-density tourist spots, the exquisite design and mindful décor of the tented camp add a thought-provoking aspect to guests' already very remote and private East African experience.

The flexibility of our luxurious Wilderness Usawa Serengeti camp allows us to move at short notice between our 9 camp sites, situated at key migration intersection points within Serengeti National Park. This guarantees guests are at the heart of the drama and in the best locations to experience the Great Migration, following the ever-moving mega-herds.



WILDERNESS

About Usawa Serengeti



6 tents
(1 family)



Game drives
morning and
afternoon only;
all day on
request



Star gazing



Guided
nature walks



Birding



USAWA SERENGETI PURPOSE

Uplifting the community

Wilderness is proud to note that through formal training programmes for underprivileged children, and by educating and upskilling the community, it empowers local residents to reduce their reliance on poaching, snaring and cutting down trees. By working with the authorities and other local partners, Wilderness strives to help protect the phenomenal natural areas of Serengeti National Park.



ACCOMMODATION

Intimate and authentic

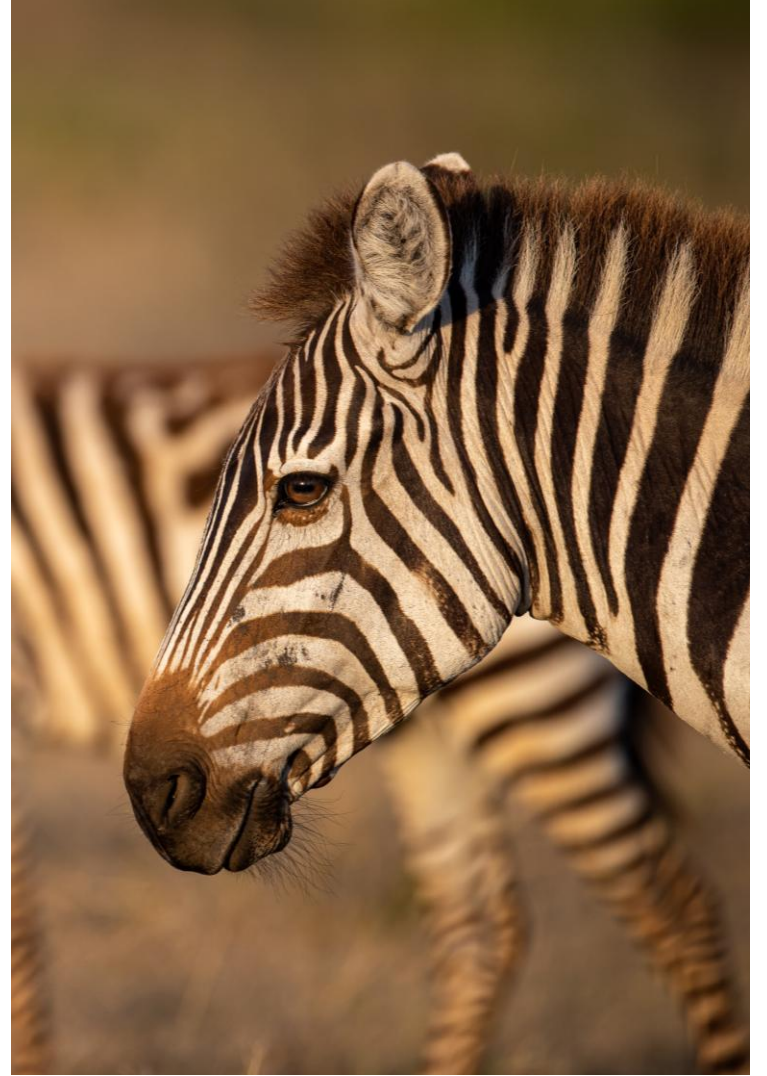
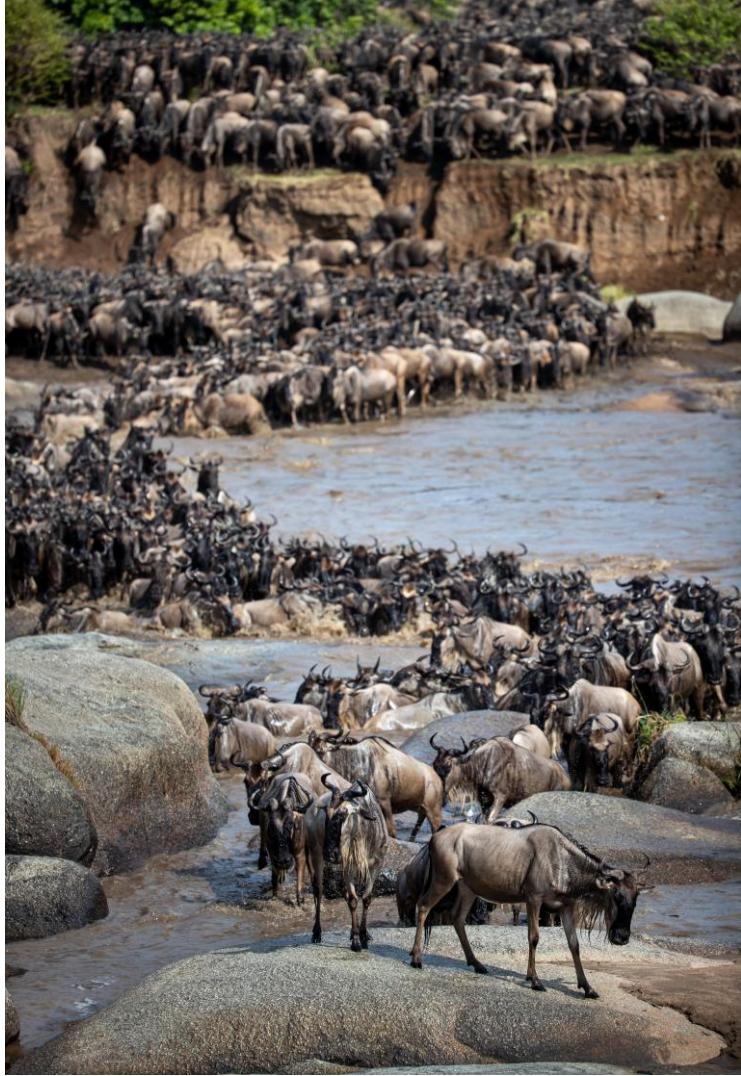
Wilderness Usawa Serengeti is an intimate, authentic tented camp, offering the thrill of a tented experience in pristine wilderness settings, without forfeiting any of the comfort or luxury Wilderness guests are accustomed to.













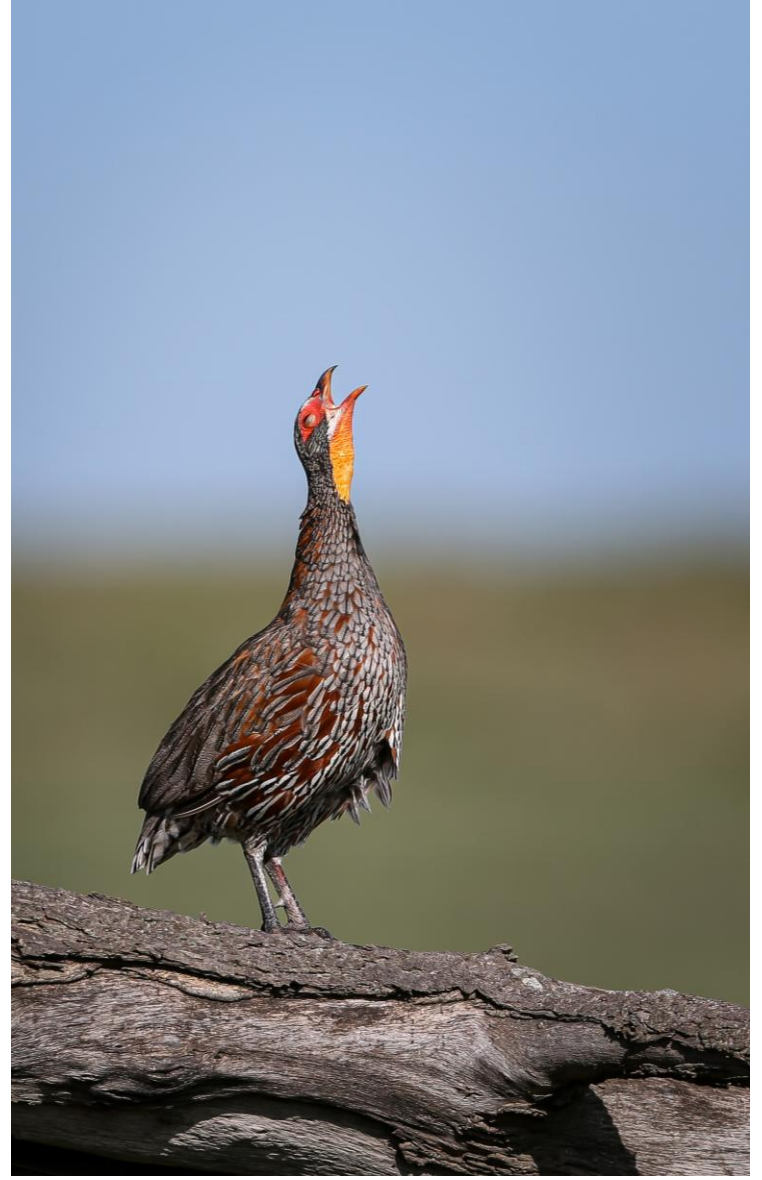


BAT-EARED FOX, BLACK-BACKED JACKAL

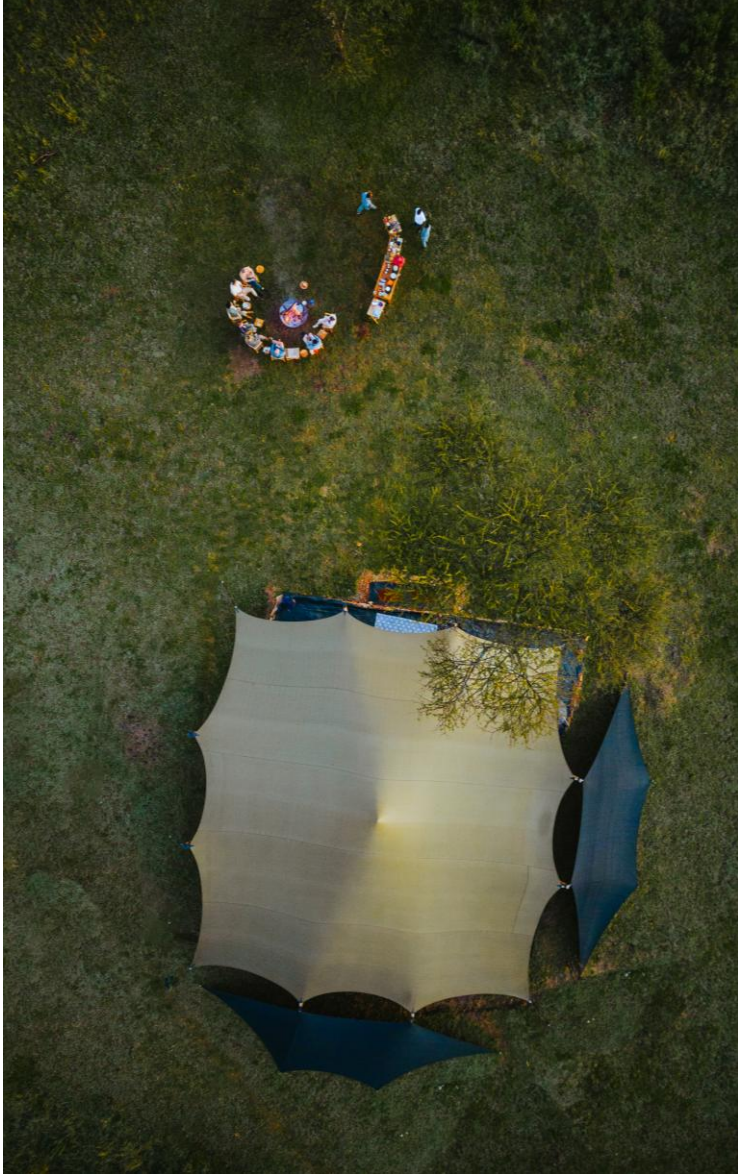


LEOPARD, MASAI GIRAFFE











SETTING UP FOR LUNCH



DINING AREA





FAMILY ROOM



FAMILY ROOM

THANK YOU



WILDERNESS