



WILDERNESS

# SERRA CAFEMA





## UNIQUE SELLING POINTS

# Serra Cafema

- The lush Kunene riverine vegetation, set against the vast desert landscape of Hartmann's Valley and its spectacular geology, provides **a new interpretation of the concept of natural beauty**.
- **Fascinating wildlife**, from desert-adapted oryx, springbok, Hartmann's mountain zebras and chameleons, extends to fearsome Nile crocodiles and myriad birds in and on the Kunene River.
- Guests are able to **meet and interact with a neighbouring Himba community**, who pursue their traditional semi-nomadic way of life in the area.
- **Diverse and contrasting experiences**: dune-sensitive guided quad biking, nature drives and walks in the dunes and amongst the fascinating geological formations, and seasonal boating on the Kunene River.



# About Serra Cafema



8 tents  
(1 family)



100% solar



Pool



Massages



Himba  
community visits



Game drives



Quad biking



Boating



Guided  
nature walks

# Access to Serra Cafema

- Airstrip name: Airstrip
- Duration to camp: An approximately 1.0- to 1.5-hour vehicle transfer





SERRA CAFEMA PURPOSE

# Impact-focused tourism model

Serra Cafema is leased from the primarily Himba-owned Marienfluss Conservancy. We support this community in many ways: from the ongoing patronage of the Children in the Wilderness programme to managing a mobile school feeding initiative. We have also facilitated the installation of a fully kitted mobile clinic for Otjinungua village, whose Himba residents have previously had no access to nearby medical care.



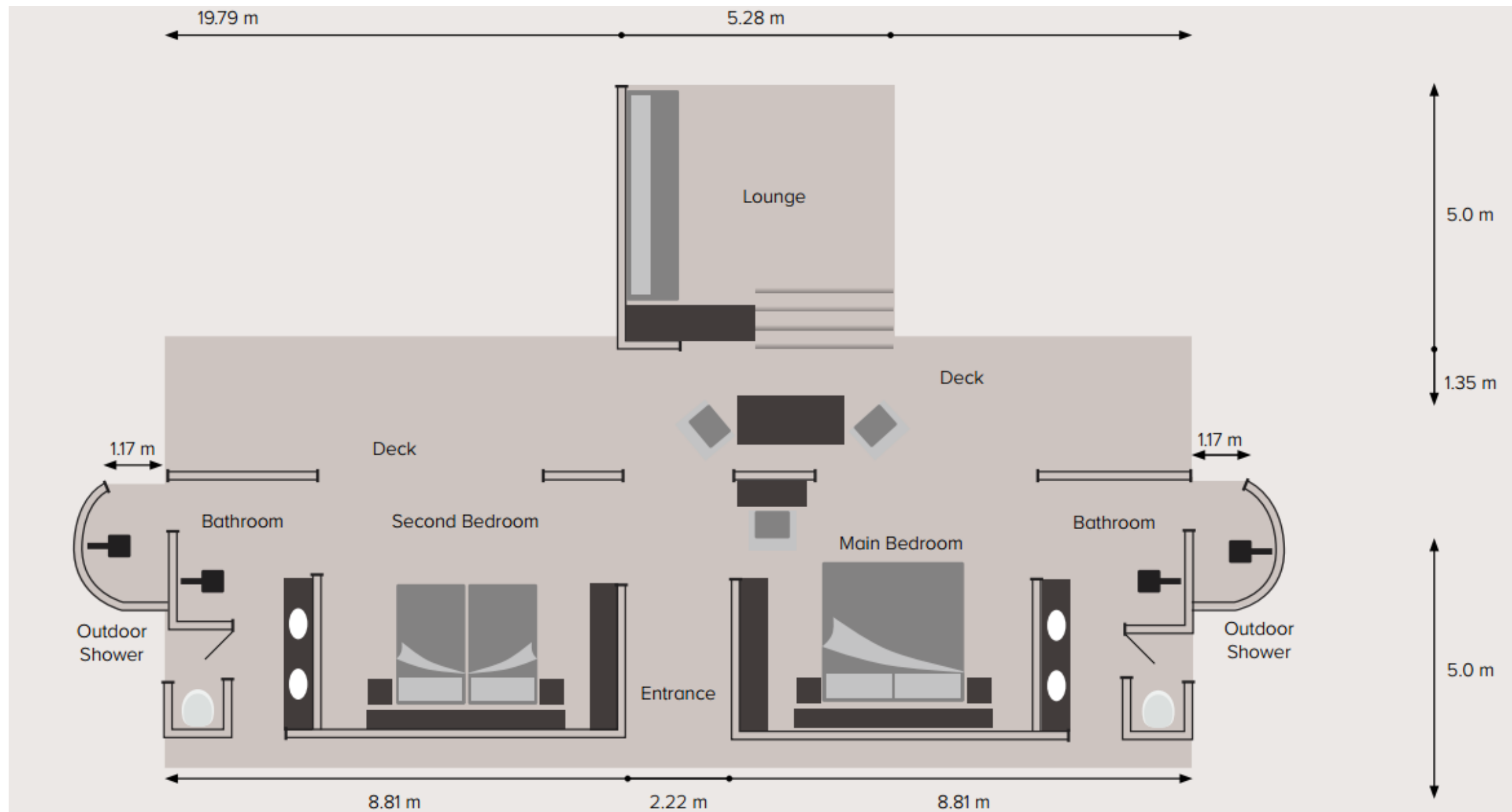
## ACCOMMODATION

# Canvas, thatch and exquisite interiors

- Sublimely appointed Serra Cafema is a place where guests can truly disconnect and unwind to the sight and sound of flowing water, and beyond, to the powerful silence of the desert.
- Paying homage to Himba culture, the camp, and its eight exquisitely furnished canvas guest suites (including one family unit), is set on elevated decks where guests are effortlessly immersed into the spectacular surrounds.



MAIN AREA & SUITE







We particularly loved our experience with the Himba and admire the way Wilderness approaches this relationship. The landscape, the people, the team, the lodge; Serra Cafema is one of the most special places we have ever visited.

- Serra Cafema Guest



WILDERNESS



























GECKO



GOLIATH HERON







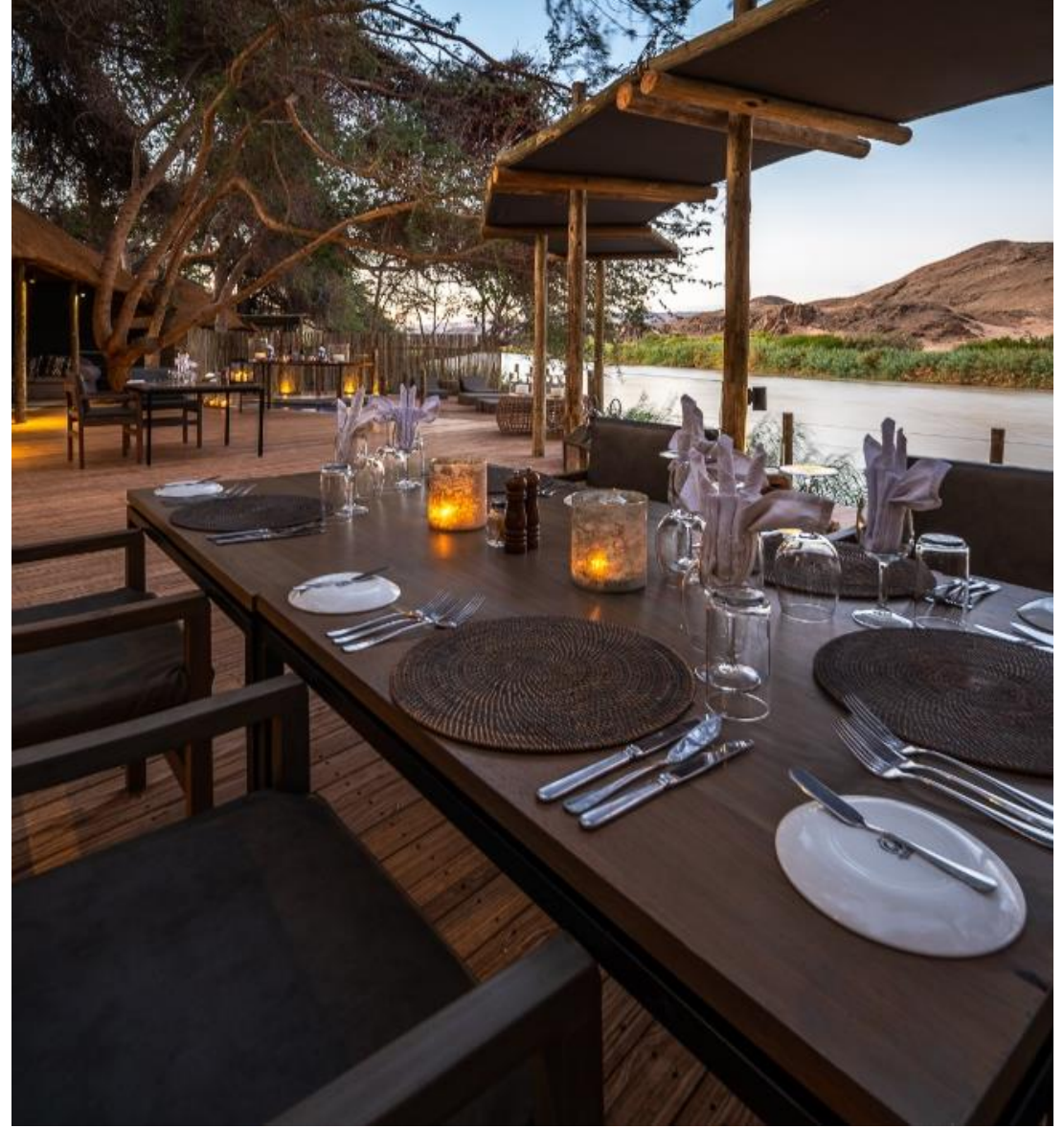








MAIN LOUNGE

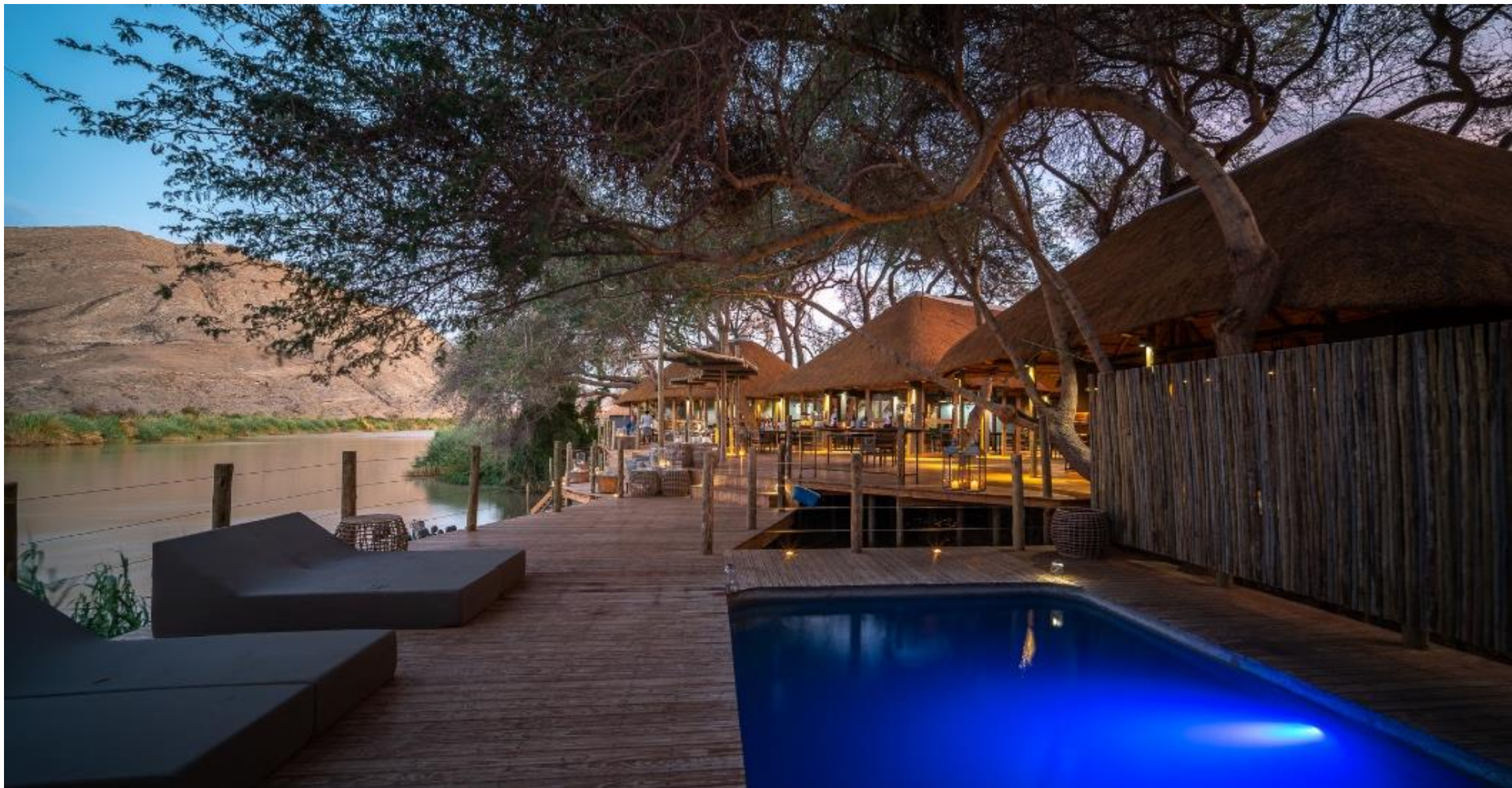


MAIN DINING AREA











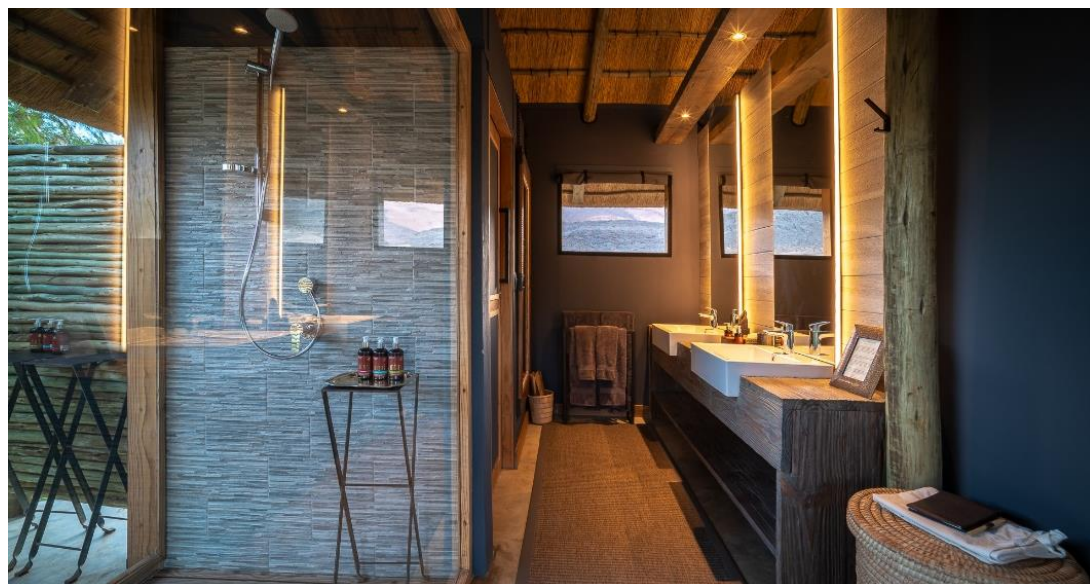




BEDROOM



OUTDOOR SHOWER, BATHROOM



# THANK YOU



WILDERNESS