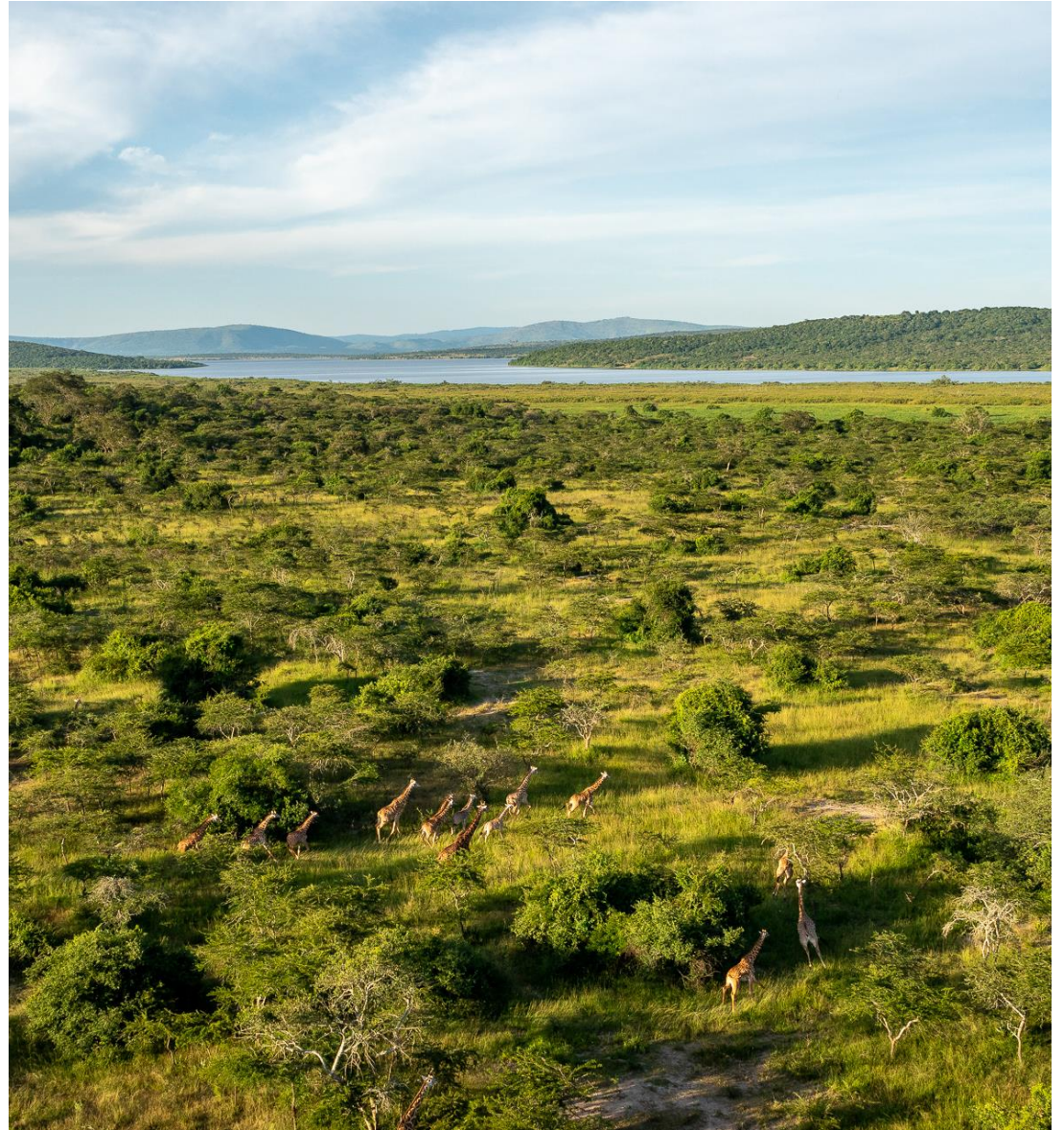




WILDERNESS

MAGASHI





## UNIQUE SELLING POINTS

# Magashi

- A **superb in-country combination** with Bisate's gorilla trekking, offering a rewarding prime traditional African savannah experience.
- **The only exclusive-use area in Akagera National Park**, allowing for private safaris facilitated by expert guides for Wilderness guests only.
- **Scenic and diverse habitats** explored by land (day/night game drives) and water (boat) - open plains, woodlands, lakes, swamps, and hilly grassland.
- **Diverse and localised wildlife species**: topi and Defassa waterbuck, Masai giraffes, as well as rhinos, buffalos, elephants, lions and leopards, hippos, and even occasionally the rare shoebill.



# About Magashi



8 Tents



100% solar



Boating



Game drives  
(day & night)

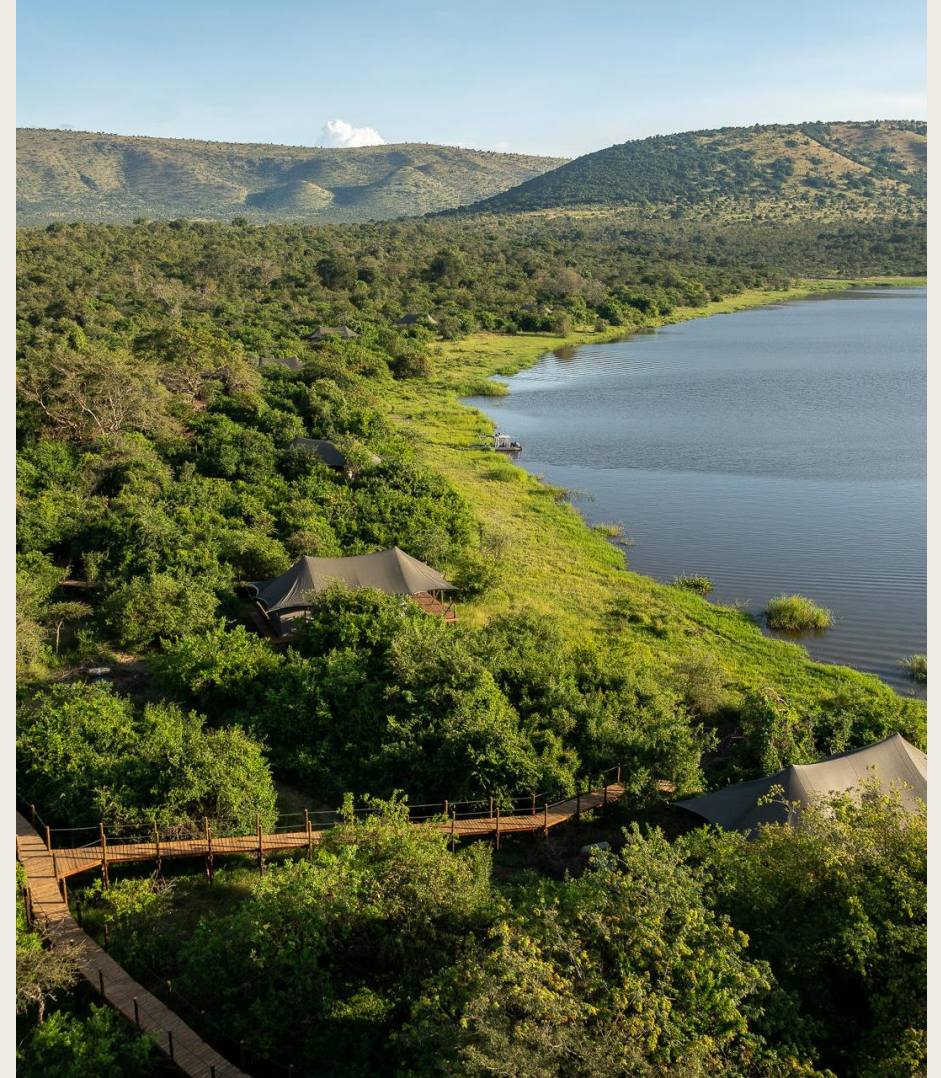


Catch-and-  
release fishing



# Access to Magashi

- Helipad Name: Magashi Helipad
- Duration To Camp: Approximate 10 minute vehicle transfer



AERIAL VIEW OF MAGASHI



MAGASHI PURPOSE

# Impact at Magashi

Magashi was established in partnership with the Rwanda Development Board and African Parks, affirming our commitment to pioneering sustainable and authentic conservation tourism in Rwanda.

Empowering local people is the very core of our ethos, as demonstrated by two local guides becoming the first Rwandans to receive the coveted FGASA qualification.

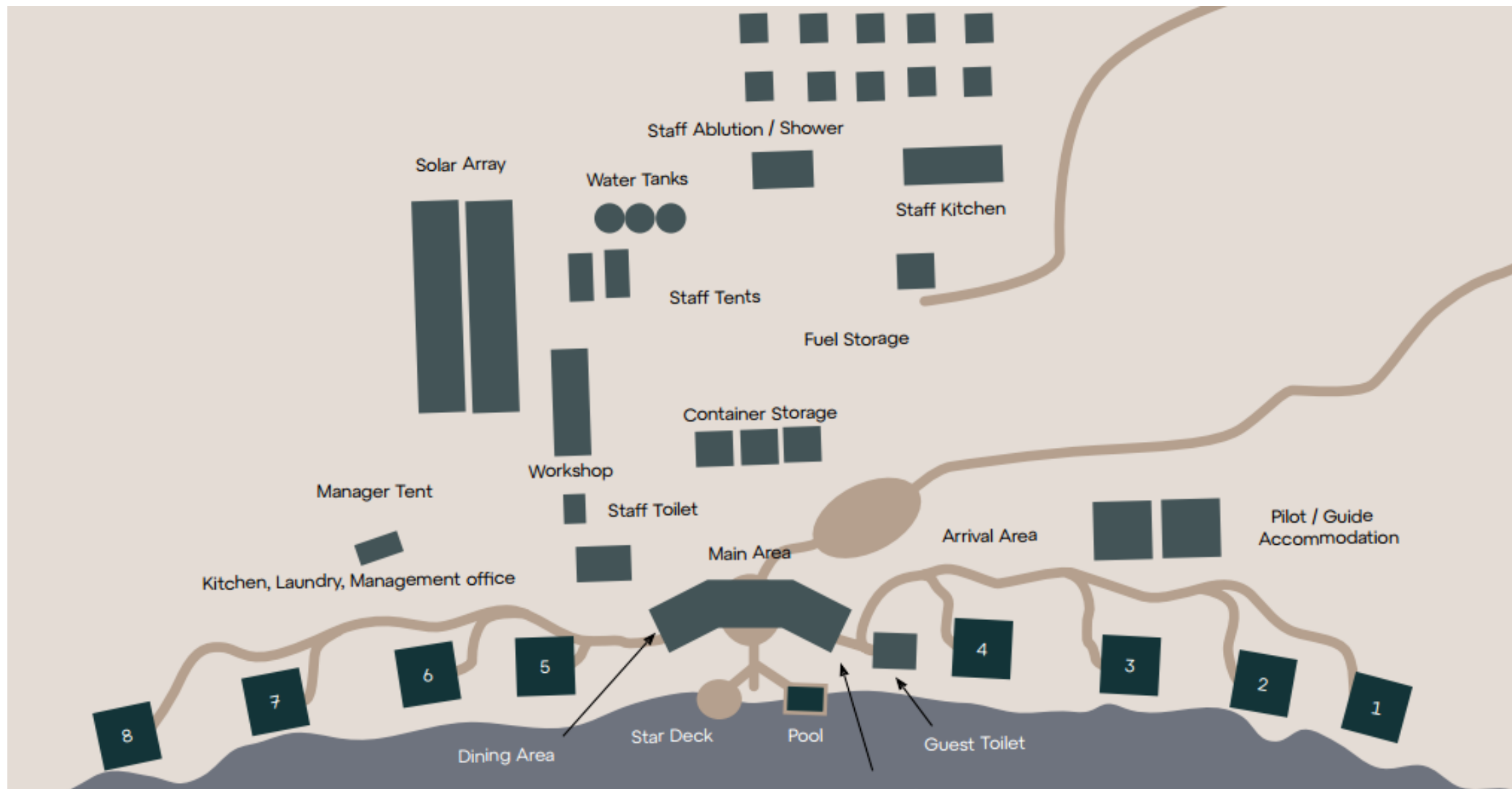


## ACCOMMODATION


# Tented suites welcome you

- Perched on the Magashi Peninsula, Magashi looks out over picturesque Lake Rwanyakazinga, towards the Mutumba Mountains in the west.
- Magashi's intimate (just eight suites) and relaxed, but luxurious, camp is warm and welcoming. Staff love sharing their traditional fare and folklore with guests.









The great thing about WS is the consistency of warm hospitality and luxurious informality across your camps.

- Magashi Guest



WILDERNESS