



# Serengeti Safari to Sacred Rain Forests: Tanzania & Rwanda Itinerary

---

Discover East Africa's striking contrasts on a 9-day itinerary, from the Serengeti's Great Migration to Rwanda's Gorilla trekking at award winning Wilderness camps.

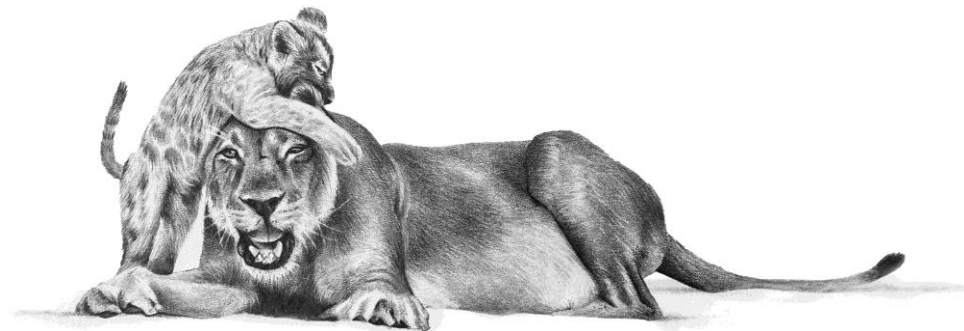
Wilderness Usawa, Wilderness Bisate Reserve

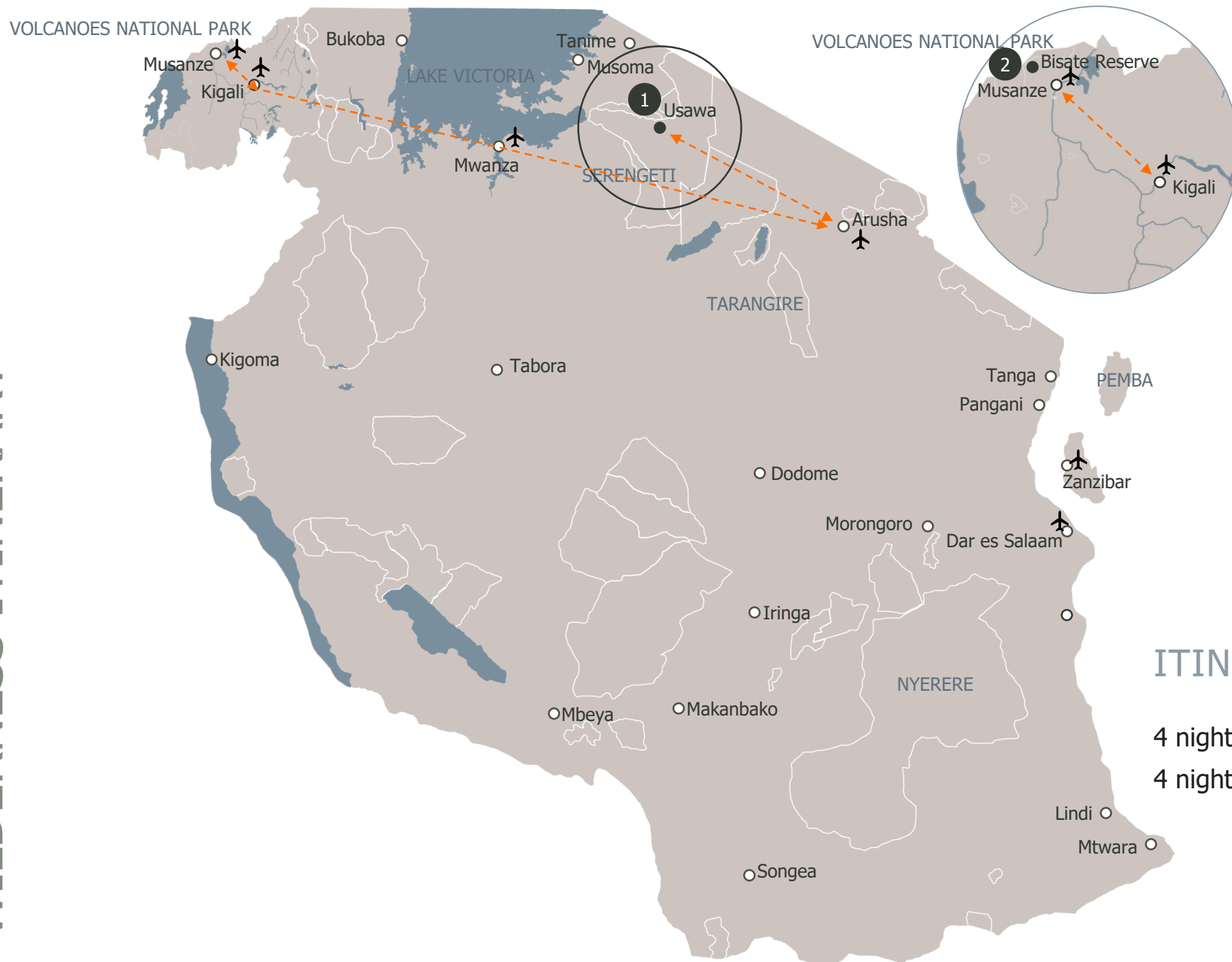


## W I L D E R N E S S

For four decades, Wilderness has been creating impactful travel journeys.  
One of Africa's leading conservation and hospitality companies, we specialise in exclusive end-to-end journeys across eight African countries.

From the continent's finest luxury safari camps to lodges and hotels, we also provide DMC services: all-inclusive, tailor-made and at highly competitive pricing throughout Southern and East Africa.





## ITINERARY

4 nights Wilderness Usawa

4 nights Wilderness Bisate Reserve



An aerial photograph of a modern lodge with multiple thatched-roof huts built into a hillside. The lodge features a large, curved wooden deck with lounge chairs and a fire pit. The surrounding landscape is lush with greenery and a dense forest of tall trees. In the background, a valley with a small town and distant mountains is visible under a clear sky.

# Watch: Serengeti Safari to Sacred Rain Forests: Tanzania & Rwanda Itinerary

---





# ACTIVITIES AND FACILITIES



6 tents  
(1 family)



100% solar



Game drives  
(day only)



Nature walks



Ballooning  
(extra cost)

# ABOUT THE AREA

Spanning 15,000 km<sup>2</sup> in northern Tanzania, the Serengeti is home to the Great Migration, where over two million animals follow the rains in search of grazing and water. Its vast plains, dotted with acacias and kopjes, support diverse wildlife, including lions and crocodiles. The Mara and Grumeti rivers flow through the reserve, treacherous points of crossing for the herds as they migrate.

# CAMPS TO COMBINE WITH

Ask your Travel Designer for the best partner product to combine Usawa with

# ACCESS TO CAMP

Nearest camp to current location of Usawa

# HIGHLIGHTS

- Wilderness Usawa Serengeti is a luxuriously appointed mobile camp that follows the Great Migration year-round.
- With access to nine key locations, it stays close to the action yet away from the crowds.
- This flexible setup ensures prime wildlife viewing across Africa’s iconic 15,000 km<sup>2</sup> Serengeti National Park.

# BEST TIME TO TRAVEL

## January & February

- Thousands of wildebeest calves are born daily, and predators are highly active.
- Warm temperatures, with occasional showers.

## March & April

- Herds are still in the south and rains begin.
- Fewer tourists, lush landscapes.

## May & June

- Migration moves northwest toward the Western Corridor.
- Less rain and dry season begins
- Excellent wildlife viewing as animals gather around water.

## July to September

- Herds move north towards Kenya where Mara River crossings begin.
- Spectacular and dramatic crossings.

## October

- Herds begin heading back south.
- Milder weather, transitional movement.

## November

- Short rains;
- Herds spread out on their return to the south.

## December

- Migration returns to the southern Serengeti. For the beginning of the calving season.
- Early predator-prey action.



WILDERNESS

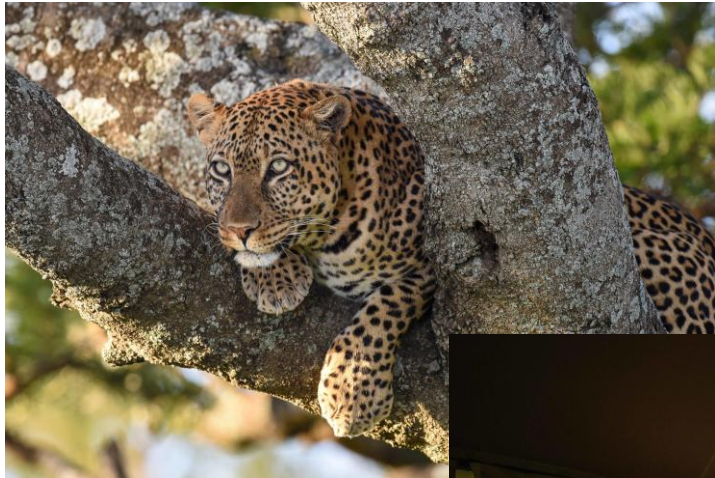
# USAWA SERENGETI



AHEAD  
MEA  
WINNER



WILDERNESS USAWA SERENGETI



## ACTIVITIES AND FACILITIES



4 villas



Gorilla trekking



Culture experiences



Nature walks



Spa treatments (extra cost)

## ABOUT THE AREA

On the edge of Volcanoes National Park, Wilderness Bisate Reserve offers sweeping views of six dormant volcanoes, including Bisoke and Karisimbi. Just a short walk from iconic Wilderness Bisate, yet entirely secluded, Bisate Reserve delivers a rare, elevated rainforest experience. Set at altitude and immersed in nature, it's designed for the most discerning connoisseurs of conservation and mountain gorilla encounters.

## CAMPS TO COMBINE WITH

- Magashi Peninsula

## ACCESS TO CAMP

- Approximate 3-hour transfer by vehicle from Kigali
- Helipad Name: Bisate Helipad
- Duration to lodge: Less than 5 minutes

## HIGHLIGHTS

- The grandest destination for mountain gorilla encounters in Volcanoes National Park.
- Home to just four sublime en-suite villas, each with expansive living areas, viewing decks and private hot tubs, promising unrivalled privacy and exclusivity.
- Guests also have access to the Bisate Kwanda Day Lounge, accommodating early arrivals and late departures in style.

## BEST TIME TO VISIT

### March to May, October & November

- Regular rainfall leaves the air clear and thus provides better photographic opportunities
- Trees and plants start to flower, encouraging birdlife

### December to February, June to September

- Two dry seasons: June-August and January-February
- While some rain still falls, this is a drier time of year with less muddy and dense conditions in the forests



WILDERNESS

## BISATE RESERVE







# WILDERNESS BISATE RESERVE





The story of our business is one best told in two halves:  
Conservation and Hospitality. These halves are equally important  
and deeply linked



## HOSPITALITY

By bringing guests to discover the  
beating pulse of Earth's ultimate  
untamed places...

Our hospitality success dictates our  
conservation impact efforts...

The more guests and partners we  
involve in our purpose...

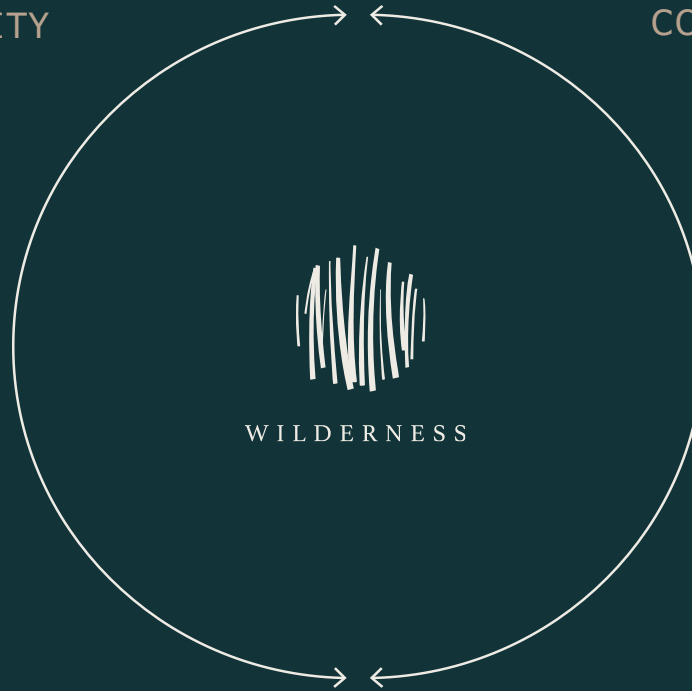


## CONSERVATION

...we impact communities through park lease  
fees, employment and by using locally  
sourced produce in our camps.

...as it enables us to support educational  
programmes, human-wildlife conflict  
and ongoing empowerment

...the greater the impact we can have in helping  
to protect these iconic and wild destinations.



## OUR IMPACT ON CONSERVATION AND COMMUNITIES

Across the majority of our areas of operation, limited access to education and economic opportunity lead to over-reliance on the environment and threats to biodiversity conservation. Our Impact framework seeks to address these challenges through three pillars.



## THREE PILLARS OF OUR IMPACT STRATEGY



### EMPOWER

Employment and local small-business support reduce reliance on natural resources. This mitigates the knock-on impact on wilderness and wildlife



### EDUCATE

Children in the Wilderness runs environmental education programmes in partner schools to improve economic opportunity, family resilience and support for conservation.



### PROTECT

The Wilderness Trust NPO supports projects addressing the needs of existing wildlife populations, seeks solutions to conserve endangered species and provides education for communities.





W I L D E R N E S S

Discover Earth's Ultimate,  
Untamed Places

## WHY WILDERNESS DMC

- Access to the best wildlife destinations in Southern and East Africa.
- Operating 60 camps in seven countries, found mostly on private concessions.
- Sharing and conserving 2.3 million hectares, and counting...
- And with our complete tailor-made DMC services, we are able to create safe and seamless journeys across, and between, each of these destinations.

*We've been creating unrivalled  
journeys through Africa's most  
iconic wild destinations with our  
partners since 1983*

---

What started as a passionate group of African guides in 1983 is now a world-leading conservation and hospitality company, responsible for helping to protect and share 2.3 million hectares (over 6 million acres) of wilderness across our planet – and counting...







W I L D E R N E S S

Discover Earth's Ultimate, Untamed Places

---

For more information on Wilderness, contact your Travel Designer or go to  
[www.wildernessdestinations.com](http://www.wildernessdestinations.com)