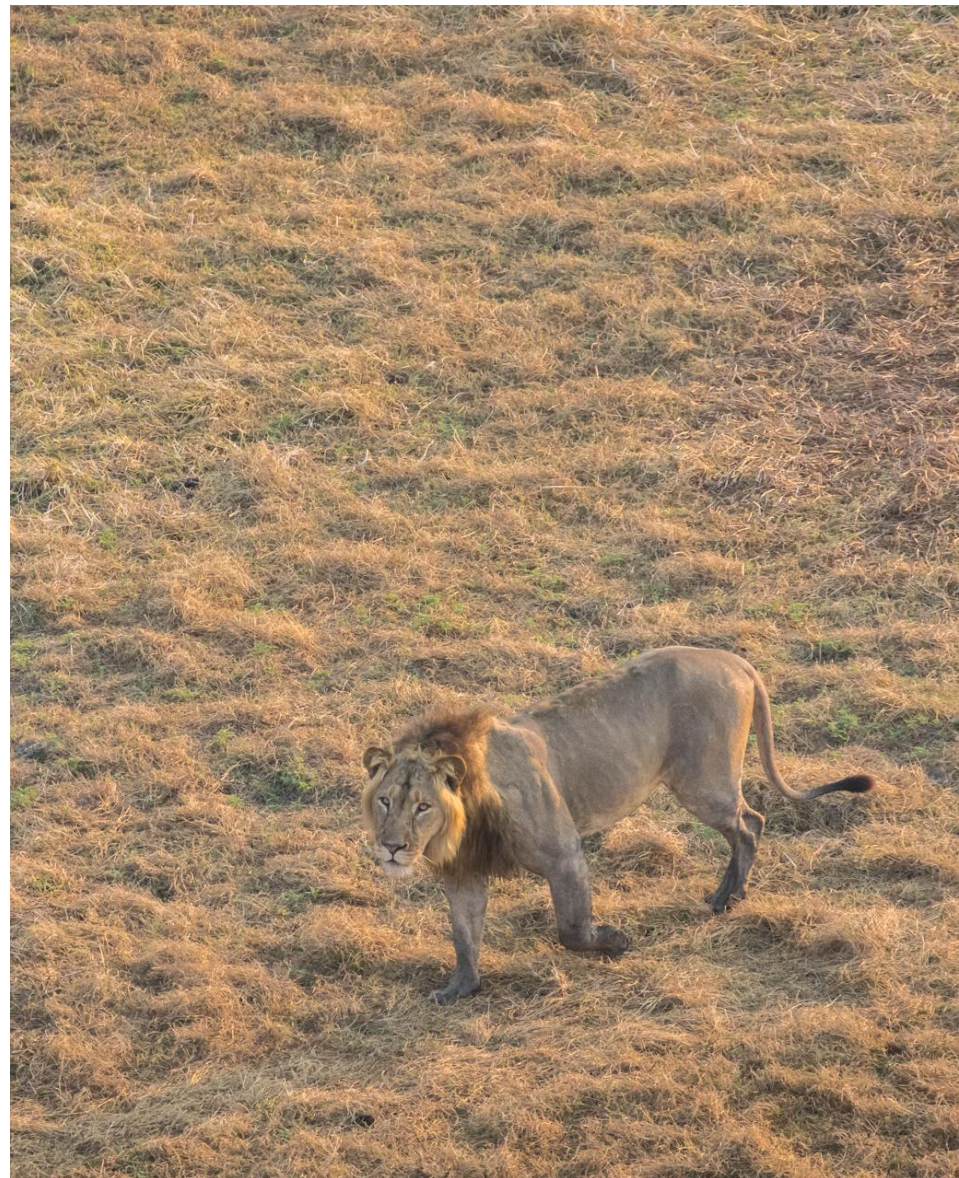
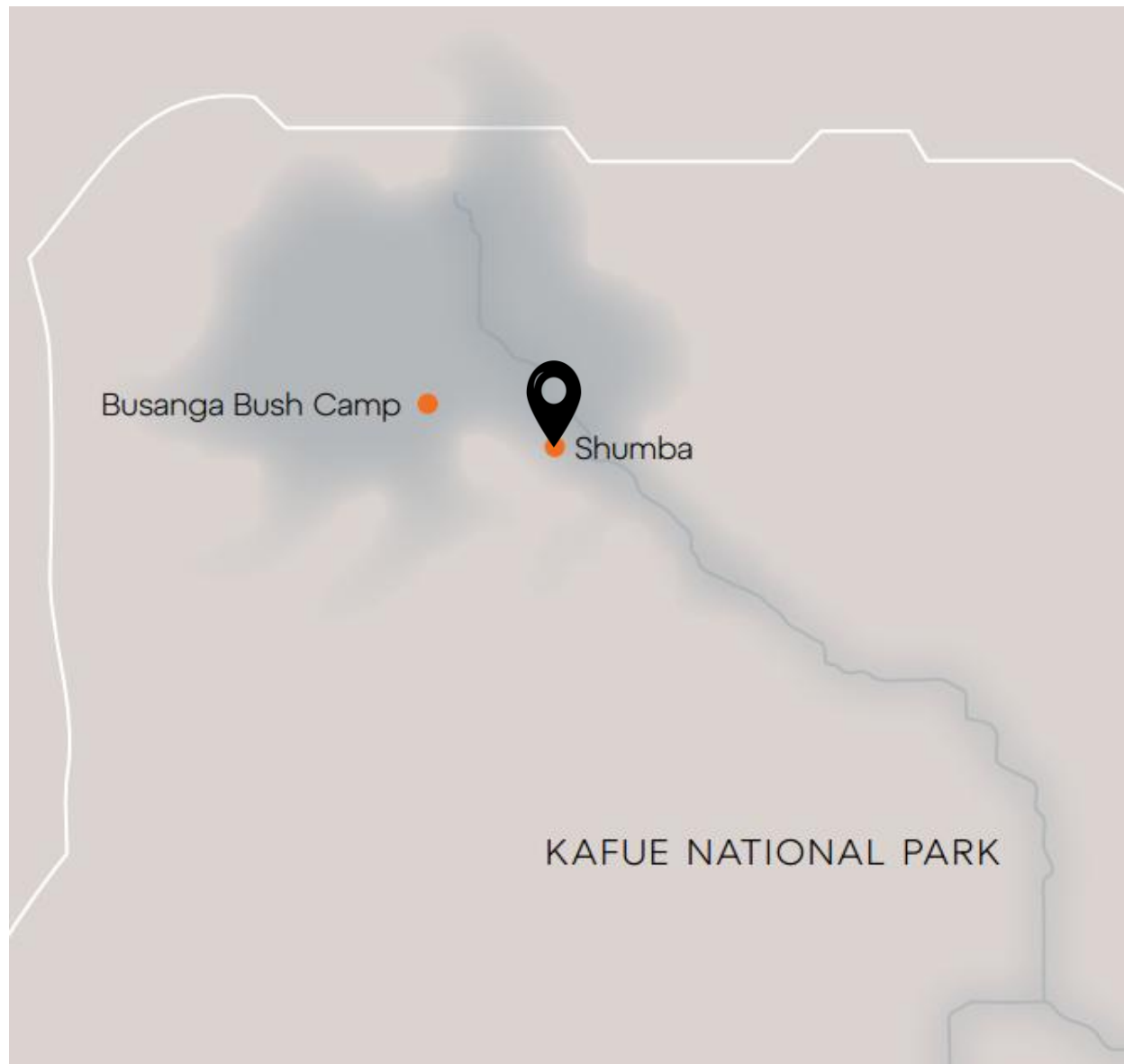




WILDERNESS

SHUMBA



## UNIQUE SELLING POINTS

# Shumba

- Wilderness Shumba occupies its own island deep in the Busanga Plains, 600 square kilometres of savannah in the north of Zambia's Kafue National Park – one of the wildest, most pristine places on Earth.
- Open for just five months each year, before the seasonal rains return, Shumba epitomises 'off the beaten track', offering one of the most remote safaris in the Kafue.
- Aptly named the "Plains of Plenty", the Busanga Plains' exceptional biodiversity draws vast numbers of species into the area, which literally teems with wildlife and birds: from oribi, to roan and sable, which are followed by predators including lions, wild dogs and cheetah, with the channels supporting hippos in their hundreds.



# About Shumba



6 Tents  
(1 family)



100% solar



Massage  
treatments  
(Ts & CS)



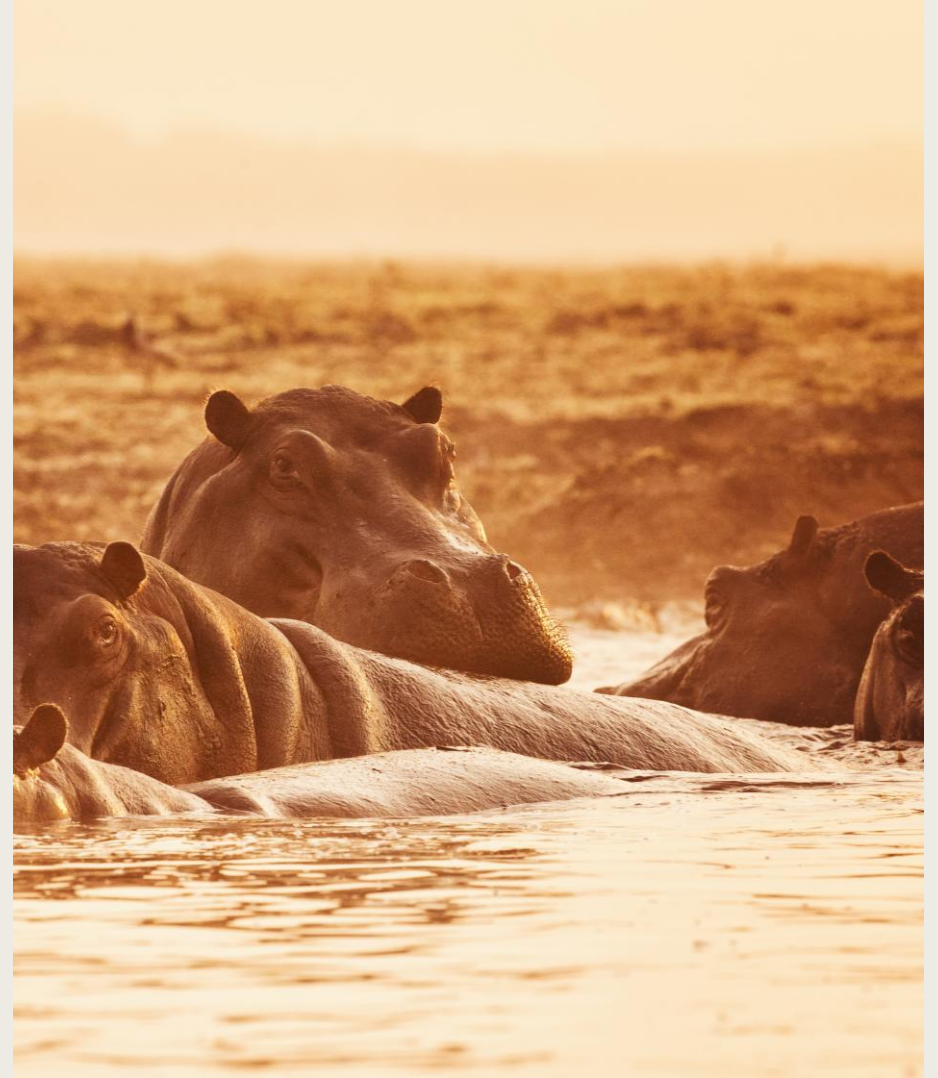
Game drives

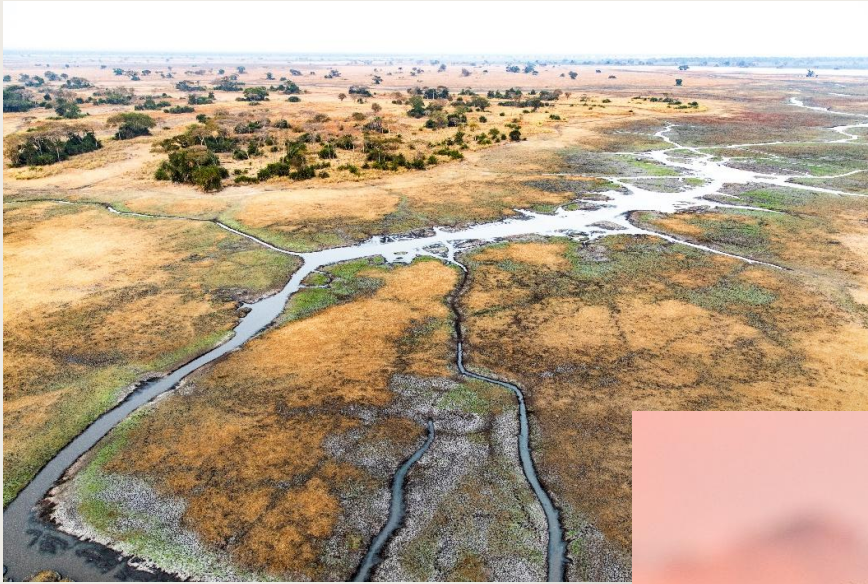


Boating

# Access to Shumba

- Airstrip name: Plains Airstrip
- June to July
  - Approximately 20-minute vehicle transfer in a game viewer from the airstrip to the mokoro pick-up point, followed by a 20-minute – or so – mokoro trip to a game viewer, and then a roughly 10-minute drive into camp
- August to November
  - Approximately 40-minute vehicle transfer from airstrip to camp





SHUMBA PURPOSE

# Wilderness Shumba Impact

The remoteness of the area and the shortened tourism season mean that Wilderness has not profited from our camps in this area. However, our presence is critical for the protection of this fragile ecosystem, through the support of conservation initiatives and creating employment.

## ACCOMMODATION

# Remote and Exclusive

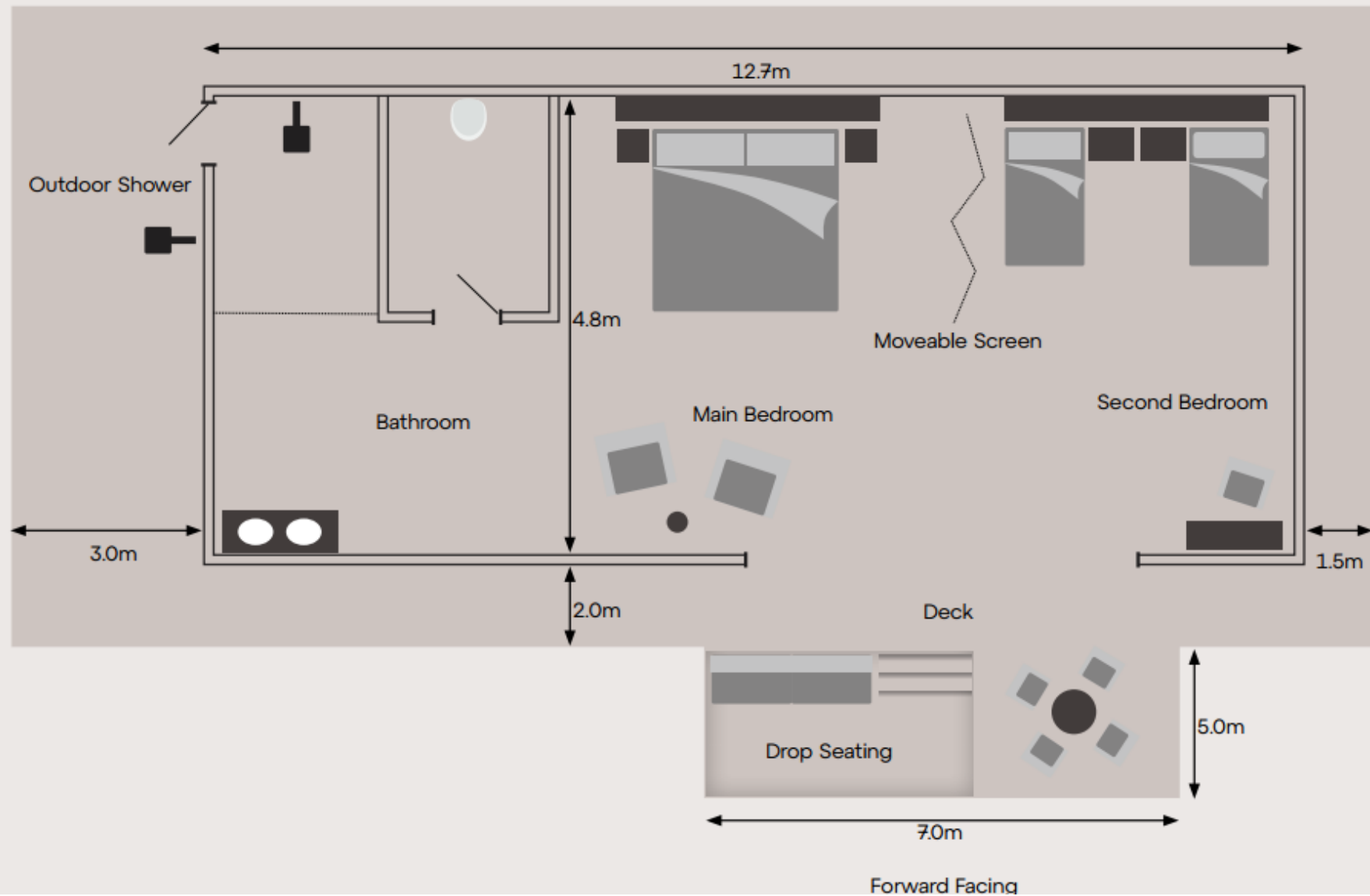
- Remote Shumba's six spacious and well-appointed en-suite tents – each with its own adjacent outdoor shower – boast spectacular views of the surrounding plains.
- The main area is imbued with Zambian hospitality, whether you're cooling off in the pool, dining under the stars, or sharing fireside tales with staff later – a classic safari ritual.
- Witness sensational sunrises from camp, or when setting out on game drives, as the sun-tinged mist reveals hundreds of red lechwe, puku, and other plains game feeding on the fertile grasses.




GUEST SUITE

Units: 1 - 6  
Family Unit: 1







A very cohesive team, all of whom made every effort to make us welcome and comfortable. We were very touched and greatly appreciated the anniversary dinner in the boma. You are all genuine and so lovely. We will hold very special memories of our stay at Shumba. It would be impossible to commend one Shumba staff member over another because you are all shining stars – but a special mention for our housekeeper who always kept our room spotless, did beautiful laundry and woke us up cheerfully each day.

*Shumba Guest*



WILDERNESS





IMPALA



ELEPHANT, BUFFALO

ROAN ANTELOPE



RED LECHWE







HIPPPOS



GREY CROWNED CRANES











MAIN LOUNGE



MAIN DINING AREA





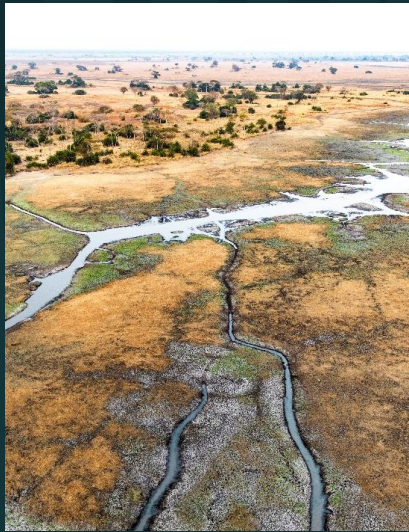








# THANK YOU



WILDERNESS