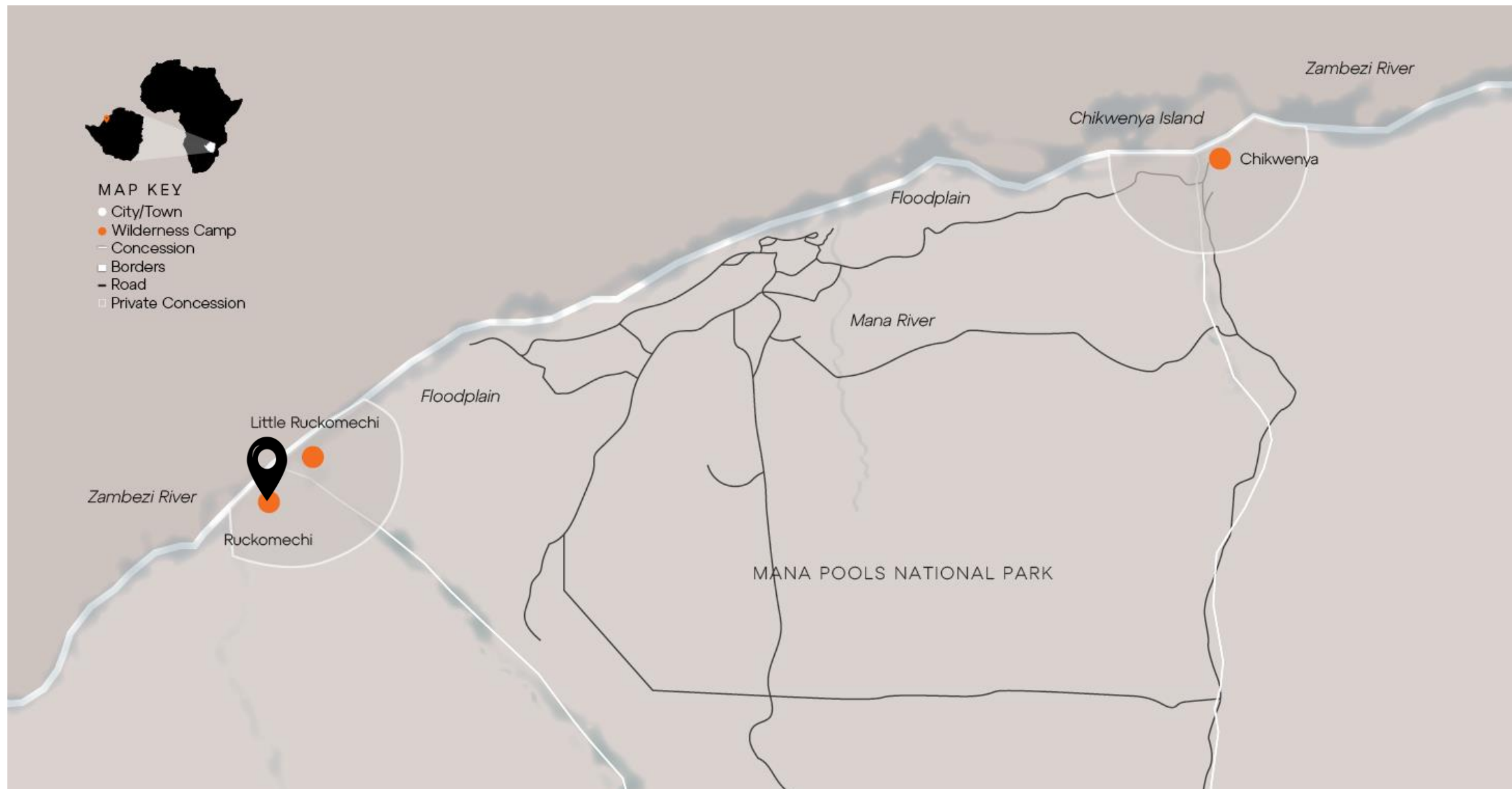




WILDERNESS

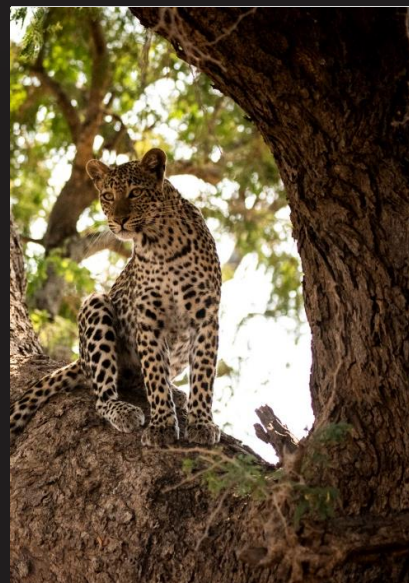
RUCKOMECHI



UNIQUE SELLING POINTS

Ruckomechi

- Set on the banks of the great Zambezi River, Wilderness Ruckomechi offers the finest game viewing experience in the Mana Pools area, thanks to the combination of its unparalleled exclusivity as a private-access area neighbouring the national park, within one of the most productive wildlife zones – the riverine belt.
- Elephants abound at Ruckomechi – not only are these pachyderms attracted to the rich, nutritious pods of the albida trees that surround camp, but the camp overlooks a favoured elephant crossing.



About Ruckomechi



10 Tents
(2 family)



100% solar



Canoeing



Catch-and-
release fishing



Game drives
(day & night)



Guided nature
walks



Boating



Star Bed



RUCKOMECHI PURPOSE

An Impactful Safari

As a private-access area neighbouring Mana Pools National Park, Ruckomechi joins the park in playing an important role in protecting what is considered to be one of the great wildlife spectacles on the continent, and in preserving a feel of real wilderness. Our simple presence on the ground has maintained a social and environmental stability throughout our tenure here.

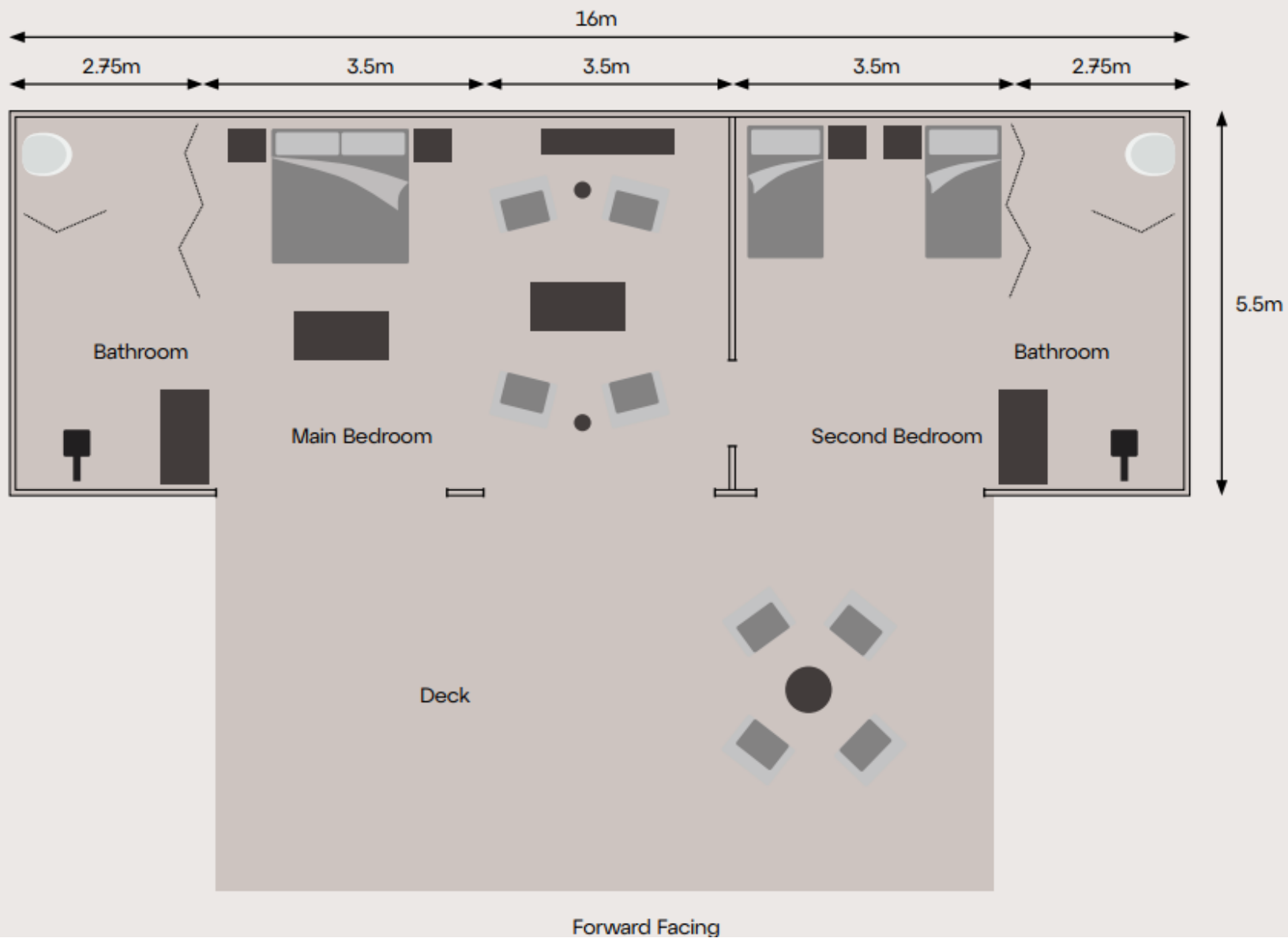
ACCOMMODATION

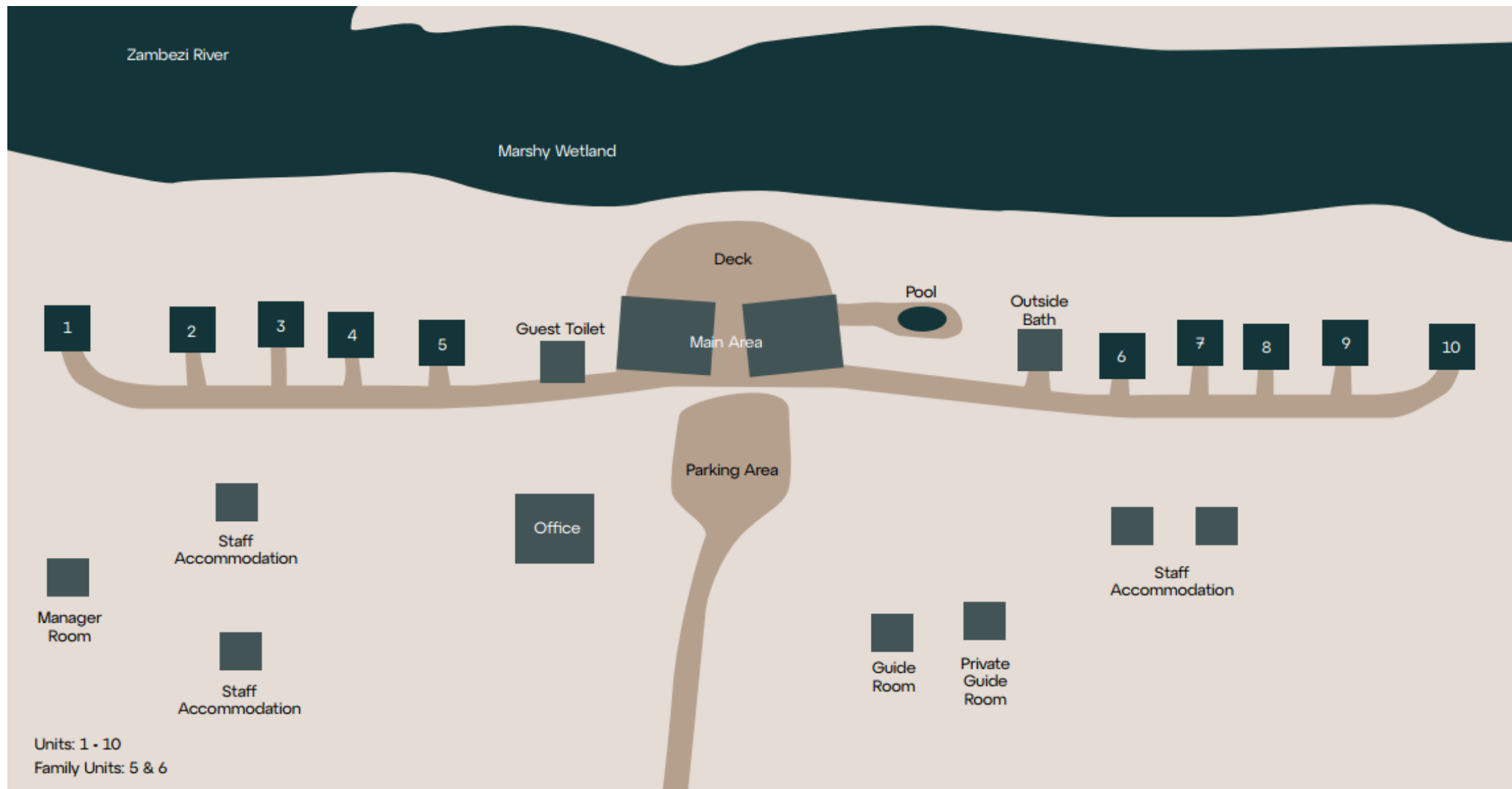
On the banks of the Zambezi River

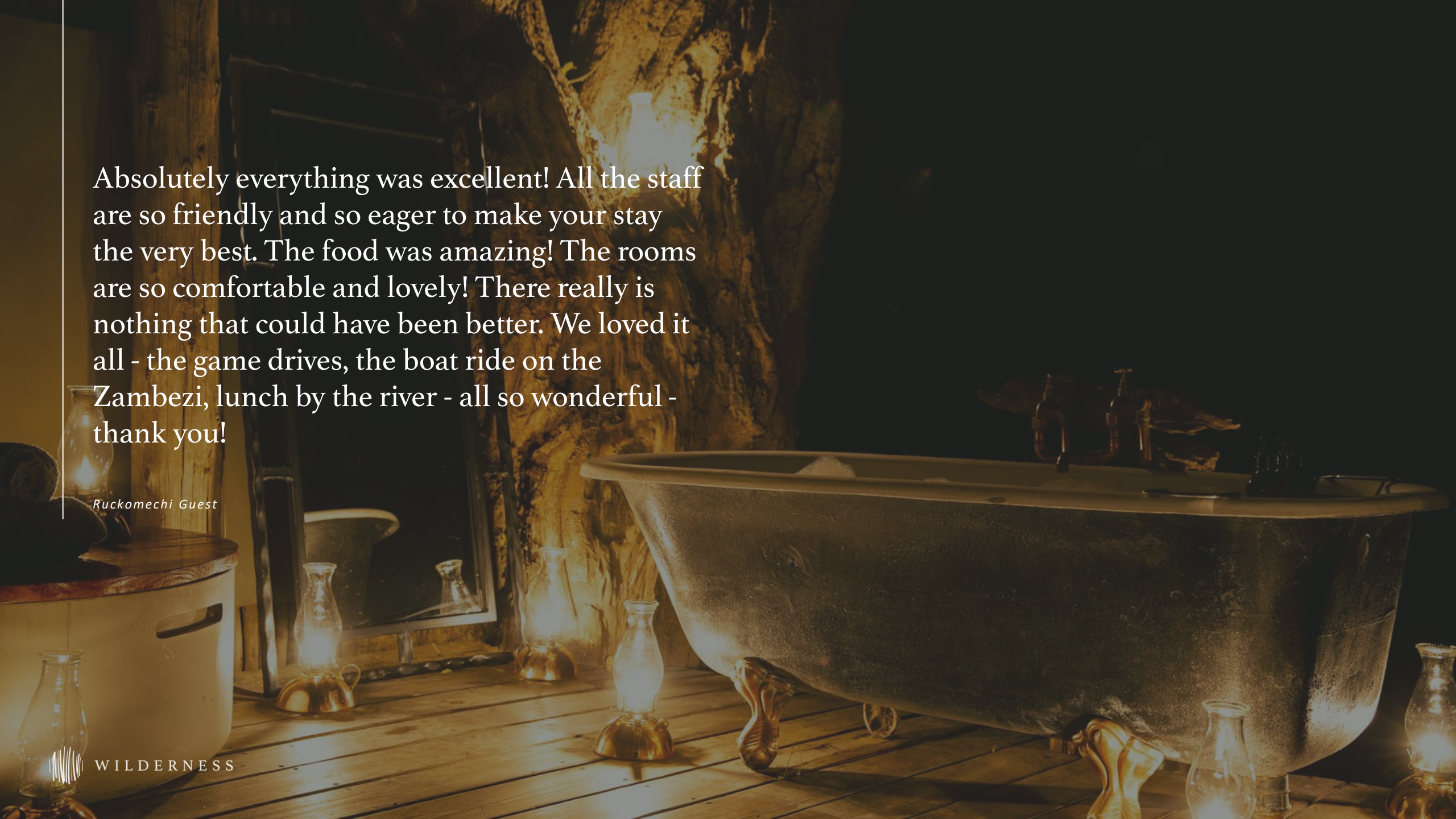
- Shaded by a glorious canopy of albid trees, 10 sublimely spacious suites (including two family units) are thoughtfully positioned along the iconic Zambezi's banks, each offering views across the river to the Rift Valley Escarpment on the Zambian side.
- The camp's main area includes a fire deck for story-swopping under starry skies; a pool overlooking a broad sweep of river; an outdoor 'bath with a view' in a secluded, scenic spot, as well as a sweeping deck where guests' meals are taken – often with the added entertainment of elephants splashing in the river.



GUEST SUITE







Absolutely everything was excellent! All the staff are so friendly and so eager to make your stay the very best. The food was amazing! The rooms are so comfortable and lovely! There really is nothing that could have been better. We loved it all - the game drives, the boat ride on the Zambezi, lunch by the river - all so wonderful - thank you!

Ruckomechi Guest



WILDERNESS



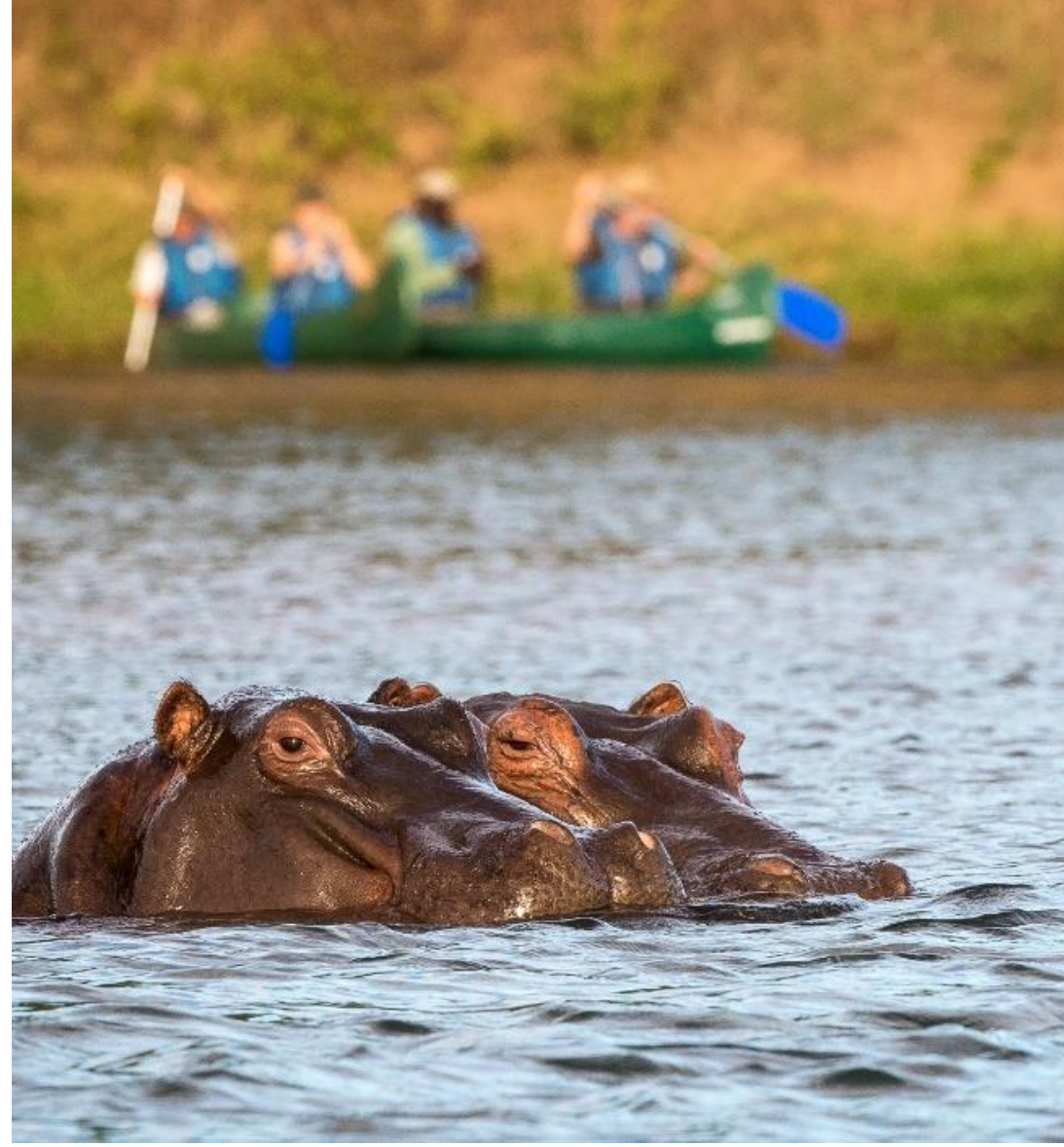






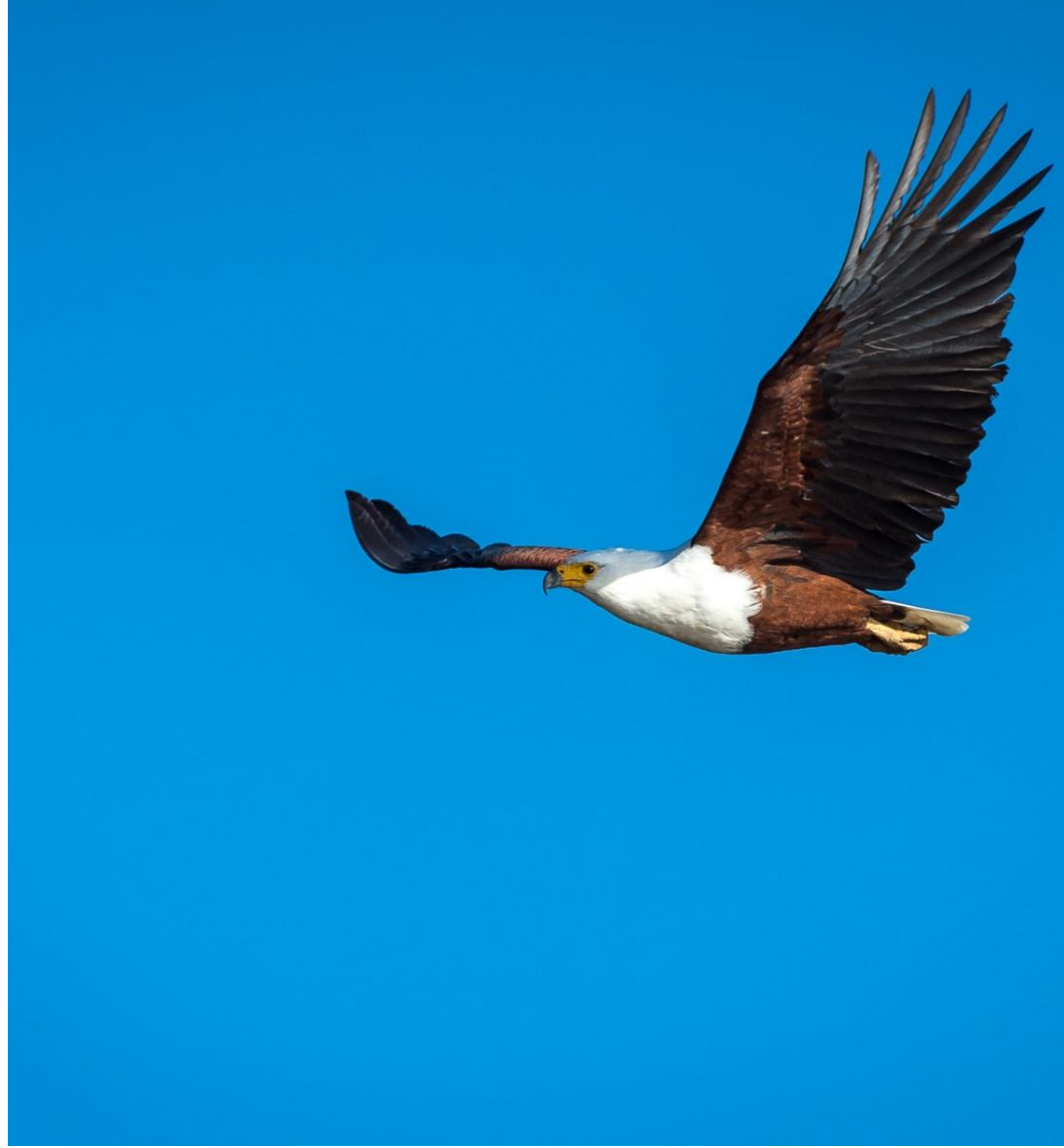














STAR BED AT PARACHUTE PAN



STAR BED





MAIN LOUNGE



MAIN LOUNGE















GUEST SUITE INTERIOR



BATHROOM AND DECK

