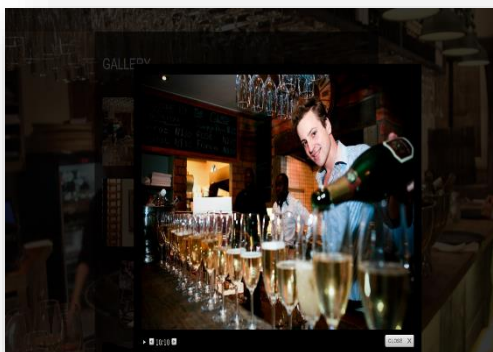




ASSOCIATED PRODUCT NAMIBIA

Monthly Features



Restaurant of the Month

The Stellenbosch Wine Bar & Bristo Windhoek

Namibia has always been a good market for South African wine and therefore we were convinced that opening a wine bar and restaurant in Windhoek was the natural thing to do. Since our opening we have hosted wine and dinner evenings, presented by proprietors and winemakers, as well as our first's annual wine show.

[Read more](#)

Tour of the Month

Swakopmund Tommy's Living Desert Tours

The Living Desert Tour, originally developed by Tommy himself in the 1990's, is a unique 4x4 adventure drive through the dunes outside Swakopmund, Namibia. Just the drive in the dunes is an amazing experience, but Tommy will show you a lot more than sand. The tour takes you from the vegetated, life-rich eastern side of the dunes, right through the dunes to the Atlantic Ocean on the western side of the dune belt

[Read more](#)

New Kid on the Block

Windhoek Palm Hotel

Windhoek Palm Hotel was created by combining unique and stunning architecture. The hotel is surrounded by beautiful palm trees and lush garden landscapes providing breath taking views with expressive décor and artistry.

[Read more](#)

Featuring... Taranga Safari Lodge



Taranga Safari Lodge has now installed night vision cameras for safety and security reasons. And very exciting; a short description of the heritage drive takes you on an open safari vehicle along the river with many fascinating stories about the crocs and hippos and celebrates the culture of a traditional 'kraal' with an introduction of the Kavango people and the role the Nguni cattle play in their lives.

[Read more](#)

General Updates:

GONDWANA SIGNS AGREEMENT TO BUILD LODGE NEAR ETOSHA

The Gondwana Collection Namibia has signed a joint venture agreement with the King Nehale Conservancy. The agreement will allow Gondwana to construct a new lodge within the conservancy, about 5km north of the King Nehale Gate at Etosha National Park.

The King Nehale Conservancy is on the northern border of the Etosha National Park. On the northern edge of the conservancy are the communal regions of Oshikoto, Oshana, Ohangwena and Omusati, home of the Owambo people. The new lodge will offer guests the chance to experience both the natural attractions of Etosha and the culture of the Owambo people.

The lodge is expected to have 40 rooms and will be designed with the rich cultural heritage of the area in mind. Gondwana believes the lodge will also provide the conservancy with the opportunity to generate additional income.

Gys Joubert, Managing Director of the Gondwana Collection, says: "This location also affords us the opportunity to open up the wonderful tourism potential of the four O regions. The modern traveller wants to experience and interact with the local cultures and we hope to play our part, together with the local communities, to explore this last frontier of Namibian tourism."

Brandberg Heritage Site (White Lady Hike)

Kindly be informed that we are currently not conducting any tours at the Brandberg Heritage Site (White Lady Hike) until further notice due to the reported cases of lions in the area. The services at the site is therefore put on hold until the institution finds a win-win