



ASSOCIATED PRODUCT *Monthly features*  
May 2018

**Restaurant of the Month**  
**The Mess**



The Mess is a restaurant and bar located in Cape Town's trendy De Waterkant Village in Green Point – perfectly placed for drinks after work, pre-theatre meals or a night out with friends. Our menu emphasises sharing plates of enjoyable food, complemented with discreet but attentive service amongst stylish surroundings. The Mess was born from a vision to create a relaxed environment and friendly atmosphere, putting back a little of what life takes out. In the 15<sup>th</sup> Century, a group of people who ate together was known as a "MESS".

[Read more](#)

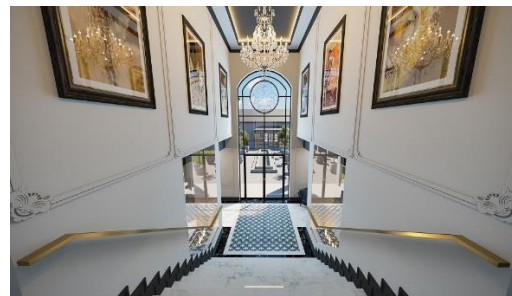
**Experience of the Month**  
**Thabametsi Treehouse**



We are excited to introduce our Thabametsi Treehouse, the newest addition to MORE Treehouse Experiences. Separate from the lodge, Thabametsi affords complete privacy, yet is close enough for efficient service. Its 6m-long Martini Step deck is the perfect place to enjoy an infinite view over the Marakele's verdant expanse – perhaps with a chilled sundowner. Thabametsi is also our most impressive treehouse yet – solar powered and built on two levels, with a bedroom, full shower room facilities, and dining and lounge areas

[Read more](#)

**New Product of the Month**  
**AM Weinberg Boutique Hotel, Windhoek**



The Am Weinberg Estate's Boutique Hotel provides all of the exclusivity and privacy you might expect from this prestigious estate – making it the perfect retreat when travelling on vacation or business. The elegant 41-bedroom hotel wraps around a heritage building, creating an inviting courtyard. This design complements its historic character, while modern amenities ensure the utmost comfort. Hotel guests also have access to facilities including the Estate's Soulstice Day Spa, two upmarket restaurants and the Conference Centre.

[Read more](#)

**Villa Life!**



**Skydance Villa, Cape Town**

Skydance Villa is situated in the Cape's small and affluent suburb of Bishopscourt. This lush residential suburb is approximately 20 minutes from the centre of Cape Town, fringed by the Table Mountain Reserve with spectacular views of the majestic mountain. Bishopscourt also neighbours Constantia, which is home to some of the oldest vineyards in Cape Town and under 50 metres from the entrance of the Kirstenbosch Gardens. Skydance Villa is set on a lush estate and offers you breath-taking views of the mountains and foothills that descend into the historical Kirstenbosch Botanical Gardens. [Read More](#)



**Machaton Private Camp, Timbavati**

Machaton Private Camp is an intimate and exclusive camp offering a secluded and private safari experience. Next to owning a private safari lodge, there is no more private way to enjoy a safari in the Timbavati. The camp consists of a main building which features a lounge, kitchen and covered veranda, as well as three individual luxury suites. Each suite offers a large en-suite bedroom, a well-appointed bathroom with an outdoor shower, a dayroom with a sumptuous daybed and a large terrace, allowing guests to either enjoy the main areas together or retreat in private to the suite. Privacy is guaranteed thanks to the careful placement of the suites and privacy walls, ensuring a tranquil and intimate stay. [Read More](#)



**&Beyond Phinda Homestead**

Minimalist yet elegant bedrooms will encourage the use of the villa's shared guest spaces, while spacious bathrooms will feature marble basins shaped like traditional Zulu pots. The villa's gym and massage room will be enlivened with quirky accessories in the signature colours, while the library will make use of pineapple motifs to tell the story of the reserve's past. The spacious deck outside will boast an island bar to encourage family gatherings and a decorative herb garden will be situated outside the kitchen.

&Beyond Phinda Homestead will reopen on 01 September 2018. [Read More](#)

### **General Updates:**

Mashatu Game Reserves – With effect from the 1st of January 2019, all reservations at Mashatu, irrespective of the nature, will attract a conservation levy of \$10 per person per night. This conservation levy will be included in all reservation pro-forma invoices for settlement prior to arrival at the respective camps within the reserve. For standing reservations made post the 1st of January 2019, these will be amended to include the levy.

Proflight - Please have a look at the 2019 scheduled changes and note that the lower Zambezi route will now be operated by Procharter who is not a preferred air charter supplier. Wilderness Air is in the process of getting them approved, please do not make any booking for 2019

Wild Horizons Newsflash - Wild Horizons is proud to announce the opening of Old Drift Lodge, Victoria Falls. Old Drift Lodge is a bush paradise that exudes an old world charm, admits modern luxuries, and is a symbol of the harmonic existence that can be achieved between man and nature.

Airlink - introduces Business Class on Kasane Route, and Maun and Victoria Falls routes. The Business class offers an intra-continental (as in intra Europe) style business class service, providing travellers with enhanced comfort by way of a generous seat pitch in economy class, and an expansive business class.

Tintswalo Waterfall – this property is no longer part of the Tintswalo Collection – The Hotel is now called Riboville Fancourt Manor House - will be closed 1 – 30 June 2018, and the Spa from 16 July to 10 August 2018, for soft refurbishment work.

Brenton Haven is now part of An African Anthology

Cheli & Peacock – The iconic and exclusive 7 Night package at The Sanctuary at Ol Lentille & Cottar's 1920s Camp is back

Desert & Delta Safaris – The new Camp Moremi officially opened after completion of a full rebuild. After closing late last year, the camp welcomed their first guests with every room booked for the first full day of operation on the 1st May 2018

&Beyond Ngala Tented & Safari – please note that the conservation levy for the Timbavati has increased with immediate effect.

Lush Private Lodge – New Product Alert - Check out the new Lodge that is opening soon in the Pilansberg represented by Kim Beyers. Tucked into a wooded hillside you'll find five individual, luxury suites which affords the privacy of home, while the main lodge, run on Italian hospitality, ensures you are very well taken care of. Lush is set on Black Rhino Game Reserve – a private concession within the malaria-free Pilanesberg National Park.

Newmark Hotels – the apartment collection – Newmark presents the Penthouse collection in Cape Town. SLICK ELEGANCE IS TAKEN TO A NEW LEVEL AT THE PENTHOUSE COLLECTION. Located on the 22nd floor of Cape Town's tallest residential building, Triangle House- in the city's attractive central business district.

Intercontinental ORT - has embarked on remedial maintenance to the exterior of the hotel building. The entire project will be completed by September 2018. There is no work taking place between the hours of 16h00pm until the following morning 09h00am so there is no noise or disruption for hotel guests.

ODIE AIR – After a review of the journey that Odie Air and Federal Airlines have walked together over the last 8 months, we are happy to announce that, as of Thursday 01 February 2018, Odiellia (Odie) Latre, CEO of Odie Air (PTY Ltd), will be joining the Federal Airlines team as Client Relations Manager- Lowveld Region

### **Specials:**

Babylonstoren - has introduced a Stay 4 Pay 3 Winter Special (May to Aug 2018).

Newmark Specials – just a reminder that we can't load these Specials into TP as they only allocate a limited amount of rooms to these Specials. And if these are all taken then the Special will no longer apply to the rest of the available rooms. Please remember to request these Specials at the time of booking as Newmark will not apply automatically.

The Outpost Lodge is offering a Stay 4 Pay 3 special valid from April to 15 Dec 2018.

Legend Lodges is offering a variety of Winter Specials

Kids under 12 Stay Free Special on Amakhala Game Reserve for months of June and July only (Woodbury Lodge, Woodbury Tented Camp, Hlosi Lodge & Leeuwenbosch Country House)

New Low Season Special for The Hide (about 10% discount on STO rate) available to all new bookings (from 02 May 2018) travelling 01 November 2018 – 31 March 2019