

SIX COUNTRIES SUMMER SPECIAL

34 luxury camps, Cape Town touring and a diverse range of experiences in six spectacular African countries to mix and match – at unbeatable prices – **NOW including Little Mombo, Chitabe & Chitabe Lediba**

BOTSWANA • MALAWI • NAMIBIA • SOUTH AFRICA • ZAMBIA • ZIMBABWE



FEATURES OF THIS SPECIAL

- Highly discounted rates at many of our top camps coupled with well-priced flying and road transfers
- Minimum number of nights reduced down from 6 nights to 5 nights! No maximum numbers of nights...mix and match!
- No single supplement on accommodation or flying (except Malawi)
- Many accommodation rates reduced, particularly in Namibia and Zimbabwe
- Increased age limits apply to child rates. Children 6 to 16 years sharing in a family room with full paying adults, pay 50% of the adult rate
- Valid from 1 October 2013 up to and including 15 April 2014. Excludes the festive season from 20 December 2013 to 10 January 2014 for all camps except Rocktail Beach Camp whose exclusion period is now from 10 December 2013 to 10 January 2014
- Travel to key areas of southern Africa and combine a vast range of complementary experiences
- Superb rates included for Wilderness Touring in Cape Town

CAMP INFORMATION - [Click on camp name or contact your journey specialist for more information.](#)

For guests travelling to Cape Town, see our substantially reduced tour rates below.

BOTSWANA

Minimum 5 night stay in one country or a combination of countries!

Little Mombo & Abu: NETT US\$ 726 per person

Jao, Vumbura Plains & Kings Pool: : NETT US\$ 484 per person

Classic / Adventures Camps: NETT **US\$ 393** per person

Deception Valley, Central Kalahari Game Reserve: *Kalahari Plains*
Okavango Delta Land Camps: **Little Mombo (Premier)**, *Chitabe*,
Chitabe Lediba, *Banoka Bush*

Okavango Delta Combination (Land/Water) Camps: *Kwetsani*,
Tubu Tree, *Little Tubu*, *Little Vumbura*, **Vumbura Plains (Premier)**,
Jao (Premier) & Abu (Collection)

Okavango Delta Water Camps: *Jacana & Xigera*

Linyanti Camps: *DumaTau*, *Savuti* & **Kings Pool (Premier)**

SOUTH AFRICA

Minimum of 3 nights.

Adventures Camp: NETT **ZAR1 231** per person

iSimangaliso Wetland Park, Zululand: *Rocktail Beach Camp*

NAMIBIA

Minimum 5 night stay in one country or a combination of countries.

Little Kulala & Serra Cafema: : NETT ZAR 3 515 per person

Classic / Adventures Camps: NETT **ZAR 1 931** per person

Sossusvlei Region: *Kulala Desert Lodge* & **Little Kulala (Premier)**

Damaraland Region: *Desert Rhino*, *Damaraland* & *Doro Nawas*

Etosha Region: *Ongava Lodge*

Kunene Region: **Serra Cafema (Premier)**

ZAMBIA

No combination of camps required, minimum of 2 nights.

Recommended in conjunction with Botswana and/or Zimbabwe.

Classic Camps: NETT **US\$ 357** per person

Livingstone at Victoria Falls: *Toka Leya* & *The River Club**

*Return road transfers to/ from Livingstone airport included free of charge.

ZIMBABWE

No combination of camps required, minimum 3 nights.

Recommended in conjunction with Botswana and/or Zambia.

Classic / Adventures Camps: NETT **US\$ 200** per person

Hwange National Park: *Little Makalolo* & *Davidson's*

Mana Pools National Park: *Ruckomechi**

*Seasonal camp. Closed from 16 November 2013 and re-opens 1 April 2014

MALAWI

No combination of camps required, minimum of 2 nights.

Lake Malawi National Park:

Mumbo Island NETT **US\$ 175** per person

Liwonde National Park:

Mvuu Camp NETT **US\$ 175** per person

Mvuu Lodge NETT **US\$ 275** per person

Nyika National Park:

Chelinda Lodge NETT **US\$ 225** per person

FLIGHT AND TRANSFER INFORMATION

Flight and transfer costs are quoted as one way, per person rates.
 No single supplement applies for flying (except Malawi).
 Single travellers pay 100% surcharge on road transfers i.e. minimum 2

FLIGHTS: Rates are NETT per person one way (adult or child)

BOTSWANA

Maun				
US\$ 161	Okavango			
US\$ 194	US\$ 194	Linyanti		
N/A	US\$ 301	US\$ 264	Kasane	
US\$ 192	N/A	N/A	N/A	Kalahari Plains

Flights between camps in the Okavango Delta: NETT US\$ 161

NAMIBIA

Windhoek/Eros					
ZAR 2 922	Sossusvlei				
ZAR 4 224	ZAR 5 616	Doro Nawas			
ZAR 4 224	ZAR 5 616	ZAR 2 006	Damaraland		
ZAR 3 989	ZAR 5 881	ZAR 3 451	ZAR 3 451	Ongava	
ZAR 4 948	ZAR 7 628	ZAR 3 083	ZAR 3 083	ZAR 4 476	Serra Cafema

ZAMBIA / ZIMBABWE

Mana Pools: Standard rates apply

Victoria Falls		
US\$ 238	Hwange	
US\$ 190	N/A	Kasane
	Livingstone	
	US\$ 184	Kasane

ROAD TRANSFERS: Minimum 2 pax, scheduled transfers to/from

Livingstone: Livingstone Airport - Victoria Falls Airport: NETT US\$ 32 per person. • Livingstone Airport - Kasane Airport: NETT US\$ 52 per person • Livingstone Airport - Toka Leya & The RiverClub: included free of charge

Victoria Falls: Victoria Falls Airport - Toka Leya & The River Club: NETT US\$ 40 per person • Victoria Falls Airport - Kasane Airport: NETT US\$ 54 per person • Victoria Falls - Little Makalolo or Davison's: NETT US\$ 122 • Victoria Falls Airport - Victoria Falls Town: NETT US\$ 13

WILDERNESS TOURING (Cape Town)



The rates quoted are per person based on minimum 2 guests.
 The per person rates quoted will reduce for 3 pax or more. Please contact your Journey Specialist for further details.

Entrance fees per person - nett & non commissionable

	Period 1 [^]	Period 2 [”]		Period 1 [^]	Period 2 [”]
Base Package*	NETT R 2572	NETT R 3 026	Peninsula	R 242	R 263
Additional full day private vehicle and guide	NETT R 1 013	NETT R 1 192	Winelands	R 221	R 242
Additional half day private vehicle and guide	NETT R 765	NETT R 900	City	R 105	R 116
Surcharge for winelands transfer	NETT R 263	NETT R 263	Lunch	R 300	R 326

* Base Package: Includes return private airport / city hotel transfers and a private vehicle and guide for 2 full days

[^] Period 1: 1 October 2013 to 15 Dec 2013 and 10 Jan 2014 to 15 April 2014

[”] Period 2: 16 December 2013 to 09 Jan 2014

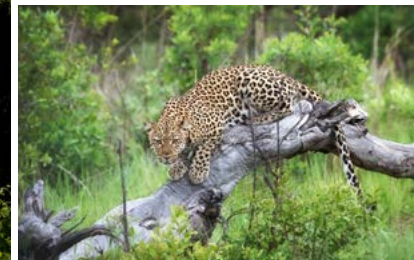
Included in additional entrance fees listed above:

Peninsula: Water, entrance fees for Cape Point, Penguins, Chapman's Peak Drive & Kirstenbosch.

Winelands: Water, entrance fees for 3 Tastings, 1 Cellar Tour, Stellenbosch Museum, Taal Monument & Huguenot Museum.

City: Water, entrance fees for South African Museum & Castle.





Terms and Conditions

- Offer valid from 1 October 2013 – 15 April 2014. Excludes the festive season from 20 December 2013 to 10 January 2014 for all camps except Rocktail Beach Camp whose exclusion period is now from 10 December 2013 to 10 January 2014.
- Rates are per person per night, minimum 2 or 3 night stays as applicable at any individual camp.
- Additional nights are recommended, utilising the applicable rate and at participating camps.
- May not be combined with any other special.
- Single travellers pay 100% surcharge on road transfers if alone i.e. minimum 2 required.
- All in-country flying to be booked through Wilderness Safaris.
- All road transfers or car rentals to be booked through Wilderness Safaris.
- Applicable to new bookings only from 01 October 2013; no conversion of existing bookings permitted.
- Low guide rates (NETT US\$ 100 per person per night in guide accommodation or ZAR 900 per person per night for South African and Namibian camps).
- ZAR 1 = NA\$ 1.
- All other standard terms & conditions of Wilderness Safaris apply
- E&OE October 2013

Inclusions

- Meals as specified; fully inclusive.
- Safari camps/lodges include two scheduled activities per day.
- Local brand drinks included at camps/lodges (except within Malawi and South Africa) excluding premium and export brands – drink inclusions may differ between camps/lodges.
- Laundry at camps/lodges (except within Malawi and South Africa).
- Accommodation taxes, the applicable Tourism Levies and all relevant Value Added Tax (VAT) or Government Sales Tax (GST).
- Departure taxes included in charter costs (except ex Zambia and Zimbabwe).

Exclusions

- Any scheduled commercial flights and related taxes. Zambia & Zimbabwe Airport Departure Tax applicable to charter flights.
- Cancellation, baggage, travel and medical insurance.
- All drinks and laundry at the Malawi and South Africa camps.
- All premium imported drinks and champagnes.
- Park fees and entrance fees in South Africa and Malawi – however these will be specified in the quote.
- Any Government taxes, levies, fuel or industry increases beyond our control.
- Visas and associated fees.
- Staff gratuities.
- Any items of a personal nature.

Camp Closures

Ruckomechi Camp: 15 November 2013 – 31 March 2014 • Kwetsani Camp: 30 November – 1 December 2013, 17 January – 11 February 2014 • Tubu Tree Camp: 30 November – 1 December 2013, 7 – 21 January 2014 • Jao Camp: 30 November – 1 December 2013, 24 January – 11 February 2014 • Jacana Camp: 28 November – 11 December 2013, 7 – 21 January 2014, Banoka Bush Camp: 17 – 21 December 2013 • Chitabe Camp: 10 – 11 January 2014, 20 – 30 January 2014 • Chitabe Lediba: 10 – 11 January 2014, 12 – 19 January 2014 • Ongava Lodge: 11 – 31 January 2014