



BOTSWANA





WHY BOTSWANA

Natural riches, a low human population density, a visionary government and the highest GDP per capita on the African continent have combined to make Botswana perhaps the most rewarding country in Africa in which to experience a big game safari.

This landlocked nation is comprised largely of the Kalahari Desert and, as a result, its 600 000 square kilometres (231 000 square miles) are home to only 2.1 million people. Far from desolate and barren however, Botswana is productive and vibrant with a rich contrast between the white sands of the Kalahari and globally unique features like the Okavango Delta – a shimmering green and blue gem known as the “jewel of the Kalahari.”

The Okavango is complemented by the Linyanti and Chobe regions in the north of the country on the Namibian border. Here, huge herds of elephant and other game such as zebra are drawn from the woodlands and grasslands of the interior right to the national border, where dense woodland gives sudden and distinct way to the waters of the Linyanti Swamps. Further south is the vast Central Kalahari where mythical destinations such as Deception Valley are equally prolific after the life-

giving summer rains and herds of springbok and gemsbok are followed along the valley floors by the area’s lion and cheetah.

While the emphasis of a Botswana safari is typically on large mammals – and there are plenty of these – it is often the sense of wilderness and pristine functioning ecosystems that has the most significant impact on visitors. Nearly 40% of the country has been set aside as national parks and wildlife reserves!

The importance of visitors and tourism to the sustainability of these areas cannot be overstated. Approximately 60% of all the people who live in northern Botswana are employed in some aspect of the wildlife and tourism industry, which is now the second largest contributor to the GDP of the country. A visionary ecotourism policy, carefully nurtured by the government over the past 30 years, has had a spectacular impact on the sustainable conservation of all the animals and plants that live here. A case in point: white and black rhino, poached to extinction in Botswana some time ago have, thanks to a joint project between the Botswana government and Wilderness Safaris, been returned to their integral place in the hierarchy of wild Botswana.

Aitse go tsamaya ke go bôna
(Indeed ... to travel is to genuinely discover and experience)

Tswana proverb

Contents



Why Travel With Wilderness Safaris?	4
Our Camps And Explorations	6
Between Camps	10
The Okavango Delta – Land Camps	12
Mombo Camp	14
Little Mombo	16
Chitabe Camp	18
Chitabe Lediba	20
Banoka Bush Camp	22
The Okavango Delta – Water Camps	24
Jacana Camp	26
Pelo Camp	28
Xigera Camp	30
The Okavango Delta – Combination camps	32
Abu Camp	34
Jao Camp	37
Vumbura Plains	38
Kwetsani Camp	41
Little Vumbura	42
Seba Camp	45
Tubu Tree	46
Little Tubu	48
The Linyanti	50
Kings Pool	52
DumaTau Camp	54
Savuti Camp	56
The Central Kalahari	58
Kalahari Plains Camp	60
Our Explorations	64
Botswana Summer Encounter	66
Great Wilderness Journey	68
More Than Just A Safari	72
Where Else In Africa?	74

Pages 32 – 49

Okavango Delta – Combination

Camps: Abu Camp; Jao Camp; Kwetsani Camp; Little Tubu; Little Vumbura; Seba Camp; Tubu Tree; Vumbura Plains

Lush, landscapes of wetland and dryland, wide variety of large mammals, stunning scenic vistas



Pages 24 – 31

Okavango Delta – Water

Camps: Jacana Camp; Pelo Camp; Xigera Camp

“True Okavango,” lagoons, reedbeds, channels, papyrus swamps, spectacular birding and specialised creatures like sitatunga, reed frogs and pygmy geese



Pages 58 – 62

Central Kalahari

Camps: Kalahari Plains Camp

Deception Valley, the “green desert,” black-maned male lion, cheetah and hundreds of springbok and oryx



Pages 50 – 57

Linyanti

Camps: DumaTau Camp; Kings Pool; Savuti Camp

Woodland, floodplain and the Savute Channel, huge elephant densities, abundant predators and prey



Pages 12 – 23

Okavango Delta – Land

Camps: Banoka Bush Camp; Chitabe Camp; Chitabe Lediba; Little Mombo; Mombo Camp

Scenic floodplains and islands, high predator densities and good antelope diversity



Pages 10 – 11

Between Camps

Our fleet of light aircraft provide seamless connections from camp to camp; the air-conditioned lounge in Maun a welcome retreat between flights



Camp Categories

○ Collection ● Premier ● Classic ● Adventures



Why Travel with Wilderness Safaris?

Today we have so much choice when it comes to travelling, it's often difficult to make a decision on the country in which to travel, let alone deciding with whom to travel. Wilderness Safaris makes the choice easy. Not only do we have camps and lodges in eight countries across Africa, but we have been based in Botswana for more than 30 years. It is here that we started our love affair with the wilderness and where we offer our guests exclusive access to wilderness areas and wildlife of unparalleled quality.

- Wilderness Safaris offers our guests exclusive access to nearly 3 million hectares (7 million acres) of Africa's best wildlife areas. This equates to 3 000 hectares (8 000 acres) of private land per guest, creating a unique sense of seclusion, comfort, privacy and space. Experiences in our private concessions far exceed those in public access national parks.
- Our areas cover many habitats, encompassing parts of eight of Africa's eleven biomes, thus allowing for incredibly diverse and all-round experiences, whether in the savannah, the rainforest, the desert or the ocean.
- Whether travelling as a couple, a family or on your own, and in order to satisfy individual needs and personalities, our properties range from high-end luxury to more affordable options.
- Our dedicated team with over 30 years' experience of designing perfect safaris works hand in hand with your travel agent – an Africa specialist in their own right – to design a journey that suits your budget and bucket list.
- Our own bush airline – Wilderness Air – means that we can create a seamless journey that allows you to move from one place to the next on your itinerary without hassles.
- We offer complete, tailor-made services throughout southern Africa including logistics, sightseeing and accommodation in our camps as well as an extensive list of other places at which to stay –and of course our own set-departure guided journeys known as Explorations.
- We operate a touring and transfers business – Wilderness Touring – in the tourism hubs of Cape Town (South Africa), Victoria Falls (Zimbabwe) and Livingstone (Zambia).

At Wilderness Safaris, we create journeys, not holidays. A journey is an immersive experience, one that changes how you view the world in general and the wild places of Africa in particular.



Why we do what we do

Awards



2014

- **US Condé Nast Traveler's 2014 Gold List** – *Mombo and Little Mombo*
- **PURE Award for Community Engagement** – *Children in the Wilderness*
- **Condé Nast Traveler (US) Readers' Choice Awards** – *Top 50 Resorts and Safari Camps in Africa (Chitabe, DumaTau, Kings Pool, Little Mombo, Little Vumbura, Mombo)*
- **US Travel + Leisure World's Best Awards (4th Best Tour Operator & Safari Outfitter)** – *Wilderness Safaris*
- **Wilderness Holdings Integrated Report recognised as 6th best in the world**

2013

- **US Travel + Leisure 2013 World's Best Awards (5th Top Safari Operator)** – *Wilderness Safaris*
- **Condé Nast Traveler World Savers Award** – *Wilderness Safaris*
- **Condé Nast Traveler Readers' Choice Awards (Top 15 Resorts and Safari Camps)** – *Mombo and Little Mombo*
- **Top Hotel in Travel + Leisure 2013 World's Best Awards (ranked No.1)** – *Mombo and Little Mombo*
- **National Geographic Traveler's Best Ec lodges** – *DumaTau Camp*
- **Condé Nast Traveler Hot List** – *DumaTau Camp*
- **Travel + Leisure Top 500 Hotels in the World (Botswana)** – *Mombo & Little Mombo*
- **Condé Nast Traveler Gold List** – *Mombo & Little Mombo*

- The environment is at the heart of our beliefs and values. Our quest is to come to understand the wilderness better, to respect it, to care for it and to share it with our guests.
- We are serious about what we do and believe fully in our vision of contributing meaningfully to African conservation.
- Our vision is encapsulated by “the 4Cs,” a concept that suggests that our organisation aims to be truly sustainable by committing to the four dimensions of Commerce, Conservation, Community, and Culture:
 - **Commerce** deals with our ecotourism offerings and products and is perhaps the most critical element to sustainability in the modern world.
 - **Conservation** is divided into *Environmental Management Systems* i.e., building and managing our camps in the most eco-friendly way possible, and *Biodiversity Conservation* i.e., the understanding, management and protection of the wildlife and ecosystems with which we are involved.
 - **Community** is all about the people at the heart of our business: *Internal Community* – our staff across all our regions, and *External Community* – comprising the rural communities that either own the land on which we operate or live adjacent to these areas.
 - **Culture** is a multifaceted element that governs respect for the culture of all employees as well as the remote rural communities surrounding the conservation areas.
- Our non-profit trusts – the Wilderness Wildlife Trust and Children in the Wilderness – help us drive this vision. The **Wilderness Wildlife Trust** funds projects addressing the needs of existing wildlife populations, seeks solutions to save threatened species and provides education and training for local communities. **Children in the Wilderness** is an environmental and life skills educational programme that focuses on the next generation of rural decision makers – the children of Africa.

Our Camps and Explorations

In Botswana, our camps are typically small, intimate safari bases in superb locations, ranging in size from just three units (with a total of six beds) to 14. Here we want our guests to be immersed in Africa: while lying in bed to hear the roar of the lion, the calling of frogs, the sigh of the wind.

In order to satisfy individual needs, we have several categories of accommodation as explained at right.

Of paramount importance to us is that our camps have as little impact on the environment as possible. This is relevant not only during the building process, but also during day-to-day operating and takes into account all elements of environmental impact, from the visual and aural implications, to effects on soil, the water table, vegetation, game movement, and so on.

All of our camps undergo rigorous in-house and independent environmental impact assessments (EIAs) prior to construction. Wherever possible, renewable energy for our electricity and water heating requirements is provided through photovoltaic solar arrays. Waste water treatment, recycling and fuel storage, as well as our procurement, are also all carefully considered. Each camp undergoes comprehensive bi-annual audits, making them some of the most sustainable and responsible in Africa. We believe that – more than just comfort and life-changing experiences – our camps provide the luxury of space and a clean conscience.



Premier Camps

Our Premier camps comprise our most elegant and stylised accommodation. These camps combine exclusive luxury and superbly designed architecture with the warm comforts of home and personal service.

• Jao Camp • Kings Pool • Little Mombo • Mombo Camp • Vumbura Plains



Classic Camps

Our Classic camps are luxury tented camps, all offering stylish and spacious accommodation, with superb facilities. All bedrooms have en-suite bathrooms and decks overlooking the magnificent surroundings.

• Chitabe Camp • Chitabe Lediba • DumaTau Camp • Jacana Camp • Kalahari Plains Camp • Kwetsani Camp • Savuti Camp • Seba Camp • Tubu Tree • Little Tubu • Xigera Camp



Adventures Camps

Larger and more convivial, our Adventures camps comprise units that are generally tented, extremely comfortable with en-suite bathrooms and all the amenities to make you feel at home. Note: activities at these camps may be at extra cost.

- Pelo Camp



Explorations

Our fully serviced Explorations create a sense of exclusive camping in Africa. A variety of travel modes and activities explore mostly private concessions and wildlife areas exclusive to Wilderness Safaris guests. Accommodation ranges from tailor-made camp sites to luxurious Wilderness Safaris camps.

- Botswana Summer Encounter
- Great Wilderness Journey



Wilderness Collection

The Wilderness Collection is a portfolio of innovative destinations in iconic areas of Africa and its islands. Not necessarily 'safari camps,' they share a commitment to global sustainability and use responsible tourism experiences to highlight the Earth's plight and how discerning travellers can make a difference. Each location is dedicated to unique guest experiences.

- Abu Camp





Dining area and deck – Vumbura Plains



Pool and sala – Little Mombo



Luxury bathroom – Kings Pool



Air-conditioned guest lounge in our Maun office – Maun

Between Camps

From the moment you arrive in Africa, to your departure and every point in between, Wilderness Safaris people are ready and waiting for you.

We want to ensure as seamless and smooth an experience as possible and in Botswana, this first takes the form of a “meet and greet” at the Maun International Airport where a representative of Wilderness Safaris welcomes you, before taking you through to your next flight or transfer, or to the comfortable air-conditioned lounge in our nearby office where you can relax between flights.

Aside from being the main access point to the wilderness areas of northern Botswana, Maun is also our national operational base and the hub for Wilderness Air, our own “bush airline.” Wilderness Air is a key element of your safari experience, flying you between remote bush camps and then back to centres like Maun, Kasane or Livingstone for onward connections. The service is more than a simple connection however; rather, the aerial transfers between camps allow a totally different impression and appreciation of the country below – from the densely matted papyrus flanked waterways of the Okavango Delta and their secretive sitatunga inhabitants, to the majestic grandeur and scale of Victoria Falls.



Wilderness Air aircraft and staff



Wilderness Air ground crew and maintenance team – Maun



Helicopter transfer – Okavango Delta

THE OKAVANGO DELTA

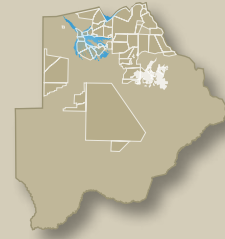
– LAND CAMPS

While large parts of the Okavango Delta are covered in water, there are a series of very low-lying sandy ridges and islands that are just high enough to be permanently above the floodwaters and as a result harbour a different range of dry-land wildlife. These raised, tree-covered islands in their different shapes and sizes are common, ranging from a single termite mound, pointing its brown finger at the sky, to Chief's Island, the largest landmass in the Okavango.

Compared to the wetter areas of the Okavango Delta, this habitat is more familiar to those who dream of the Africa showcased in nature documentaries. It is on these plains that the larger mammals – buffalo, zebra, wildebeest, and giraffe – move in their numbers. With such profusion of life, predators stalk the grass in the form of lion, spotted hyaena, leopard, cheetah and wild dog – being privy to any fragment of this ageless cycle is part of the thrill of a safari.

Safari in these parts of the Okavango takes the form of game drives in open four-wheel-drive vehicles that allow close approach to the wildlife. In the drier times of the year, when grass cover is reduced, walking on foot through these areas can be equally rewarding.

The productivity of this rich Okavango system is a result of year-round water availability, diversity of habitat and abundant fertile grasses which in turn are stimulated by both the summer rains and the winter floods. Quite simply it ranks as one of the world's top wildlife experiences.



Mombo Concession

45 000 hectares (111 000 acres); located on the northern tip of Chief's Island, Moremi Game Reserve. Habitats vary from productive grassy floodplains, low acacia woodland and forested islands of riverine vegetation to the edges of permanent swamp and even dry grasslands where vegetation and wildlife flourish.

Camp Categories

Collection Premier Classic Adventures

LAND CAMPS IN THE OKAVANGO DELTA



Chitabe Concession

22 000 hectares (54 000 acres); situated in the south-east of the Okavango Delta. Diverse habitat characterised by acacia and mopane woodland in the east, and a variety of typical Okavango habitats in the west: palm-dotted floodplains, wooded islands, tranquil waterways and dry woodland.





Mombo Camp

Lying on Chief's Island, the largest landmass in the Okavango, Mombo Camp's setting within an area steeped in nature's riches is echoed in the camp itself: rich, opulently furnished lounge, bar and dining areas shaded by large trees as well as each individual tented room all look out over a plain more often than not dotted with wildlife. A plunge pool, spa and gym all add to the sumptuousness of the camp's surrounds.

Highlights

Mombo Camp lies within the Moremi Game Reserve; its location and productive habitat mean that it offers arguably the best big game viewing in Botswana. Game drives uncover spectacular numbers of plains game such as zebra, red lechwe, impala, giraffe, warthog, wildebeest, greater kudu, elephant and buffalo. Such wealth of prey means that predators are abundant, with especially high densities of lion, giggling clans of spotted hyaena and movie star-quality leopard.

“The place of plenty” – for predators and plains game alike.





Mombo Camp at a Glance

Category: Premier

9 Tents: Large tents, elegantly furnished with polished parquet floors; outdoor sala; en-suite bathroom; outdoor shower; run 100% on solar power

Experiences: Morning and afternoon game drives in open 4x4 vehicles



Little Mombo at a Glance

Category: Premier

3 Tents: Large tents, elegantly furnished with polished parquet floors; outdoor sala; en-suite bathroom; outdoor shower; run 100% on solar power

Experiences: Morning and afternoon game drives in open 4x4 vehicles



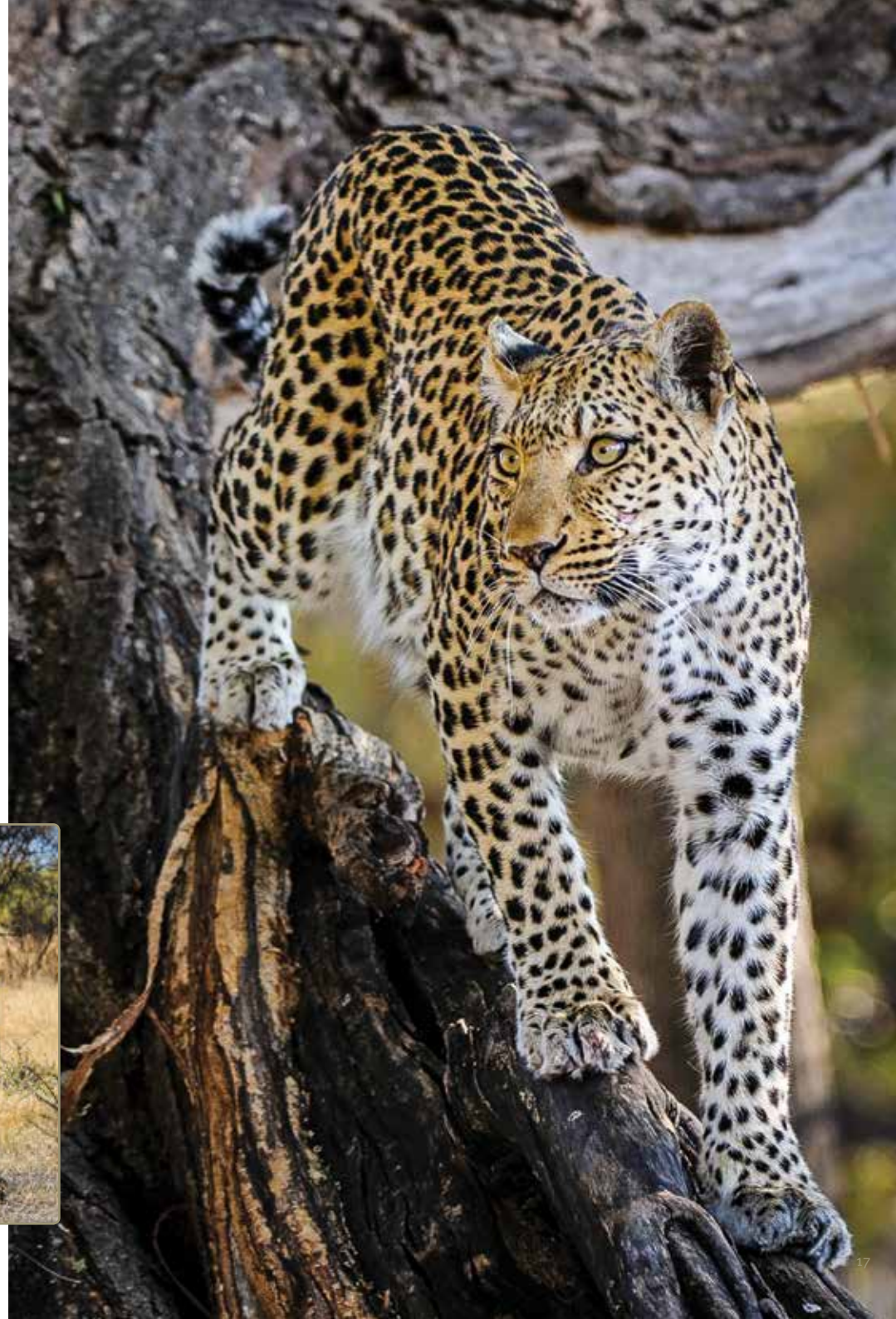
Little Mombo

Little Mombo lives up to its name: a smaller, more intimate version of Mombo Camp, yet with the same high standards. It is connected to its sister camp by a raised boardwalk, complete with a gym and inviting pool along the way. Sited under a shady canopy, it has three luxurious and spacious guest rooms under canvas, as well as its own dining room, lounge and plunge pool raised to look out over a floodplain enclave; plains game can often be seen in front of camp.

Highlights

Little Mombo, situated at the heart of the old hunting grounds of Chief Moremi, offers the identical abundant big game viewing as Mombo Camp. Highlights include sightings of large prides of lion, charismatic leopard, elephant herds, spotted hyaena, big herds of plains game like zebra, red lechwe and giraffe and a dazzling variety of birds.

Your own private camp in the Okavango's premier wildlife viewing area.





Chitabe Camp

Raised on decks on a beautiful tree island in the south-east of the Okavango, Chitabe Camp looks out across an abundant Delta floodplain that is transformed during winter from dry rushes

The archetypal Okavango game-viewing destination.

to lush oasis, one of only a few distinct habitats in this diverse concession. Back in camp, the thatched dining and lounge area provide beautiful views, while each tent exudes its own personality, aided by superb fine art wildlife photographs. A pool provides cool sanctuary in the heat of the day.

Highlights

On this classic safari experience, game drives take in the different habitats – the variety of these ensures that there is an equal diversity of wildlife, including big game such as elephant and buffalo, but also a range of plains game species like wildebeest, tsessebe and lechwe in numbers that support healthy lion, leopard and hyaena numbers, as well as regular visits by wild dog and cheetah.

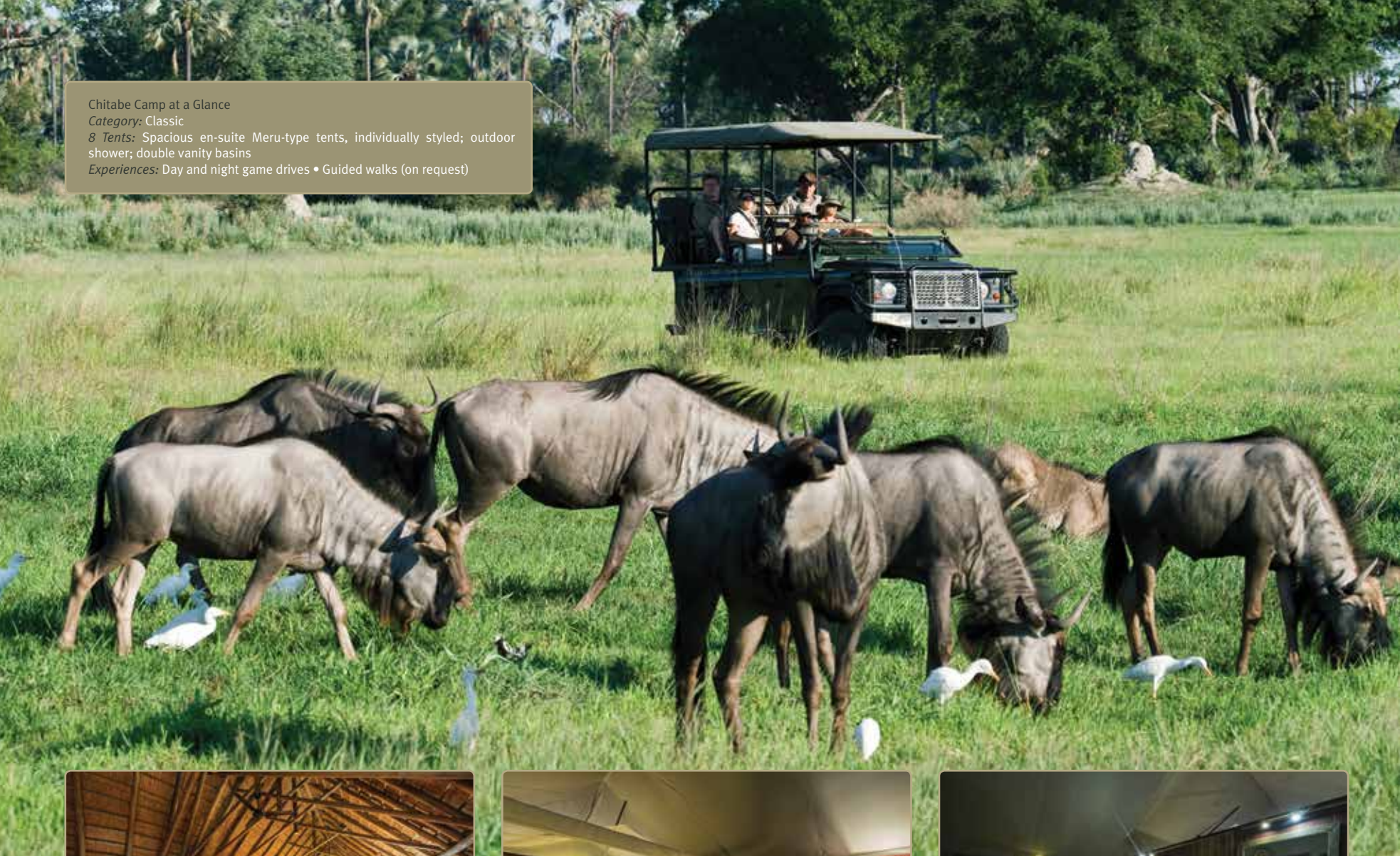


Chitabe Camp at a Glance

Category: Classic

8 Tents: Spacious en-suite Meru-type tents, individually styled; outdoor shower; double vanity basins

Experiences: Day and night game drives • Guided walks (on request)





Chitabe Lediba

A *lediba* is a lagoon that has become a waterhole, where a variety of wildlife comes to drink. Chitabe Lediba's dining area, lounge, and pool all overlook just such a vista. The sister camp of Chitabe, it lies on the other side of the same tree island and echoes many of its sibling's qualities. The same well-appointed canvas tents are raised on decks with uniquely styled interiors, but the smaller nature of the camp offers a more intimate experience, ideal for small groups or families.

Highlights

Chitabe Lediba sports that classic Okavango Delta scenery, from palm-dotted floodplains to open savannah and woodlands. This mix of Okavango (water) and Kalahari (land) makes for an excellent home to an abundant array of herbivores: giraffe, buffalo, red lechwe, tsessebe, impala and elephant, which in turn support the larger predators: lion, leopard, spotted hyaena, cheetah and the rare and charismatic wild dog.

Intimate Chitabe Lediba is a perfect game viewing base for families or small groups.





Chitabe Lediba at a Glance
Category: Classic
4 Tents (including 2 Family Tents): Spacious en-suite Meru-type tents, individually styled; outdoor shower with a view; family units with adjoining en-suite bedrooms
Experiences: Day and night game drives • Guided walks (on request)



THE OKAVANGO DELTA – WATER CAMPS

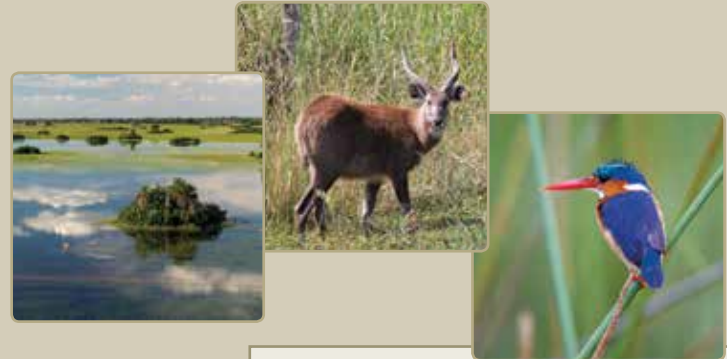
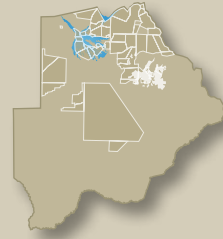
Flying over the central Okavango Delta is a surreal experience: Flat as far as the eye can see, the blue of waterlogged plains is banded by green reeds, papyrus and water-tolerant grasses – creating artistic blue-green swirls and circles. The water is so clear that it is possible to see all the way through to the white Kalahari sands at the bottom.

This water flows a thousand kilometres from its source in neighbouring Angola before spreading out into one of the largest inland delta systems in the world: an area of 15 000 km² filled with channels, lagoons, swamps and islands. Only after summer rainfall has ceased do the floodwaters arrive here, creating a fertile oasis in a desert.

This oasis is crammed with life, so that apart from the outstanding beauty of the wetland, it is also considered one of Africa's most important wildlife sanctuaries with a huge diversity of fauna and flora. Water-loving antelope from the rare sitatunga to the common red lechwe abound, while large mammals such as buffalo and elephant – and even lion and leopard – splash their way through the shallow channels.

It is perhaps the birds for which the Okavango's water areas are best known. Hallowed species such as Pel's fishing-owl and slaty egret are found alongside more commonly seen wattled crane and pygmy goose, while the specialised African skimmer (from which Wilderness Safaris takes its logo) may be seen on the larger lagoons and channels.

Central to a wet Okavango experience is a mokoro excursion – an idyllic connection to a bygone era that allows silent and tranquil progress across the waters of the region.



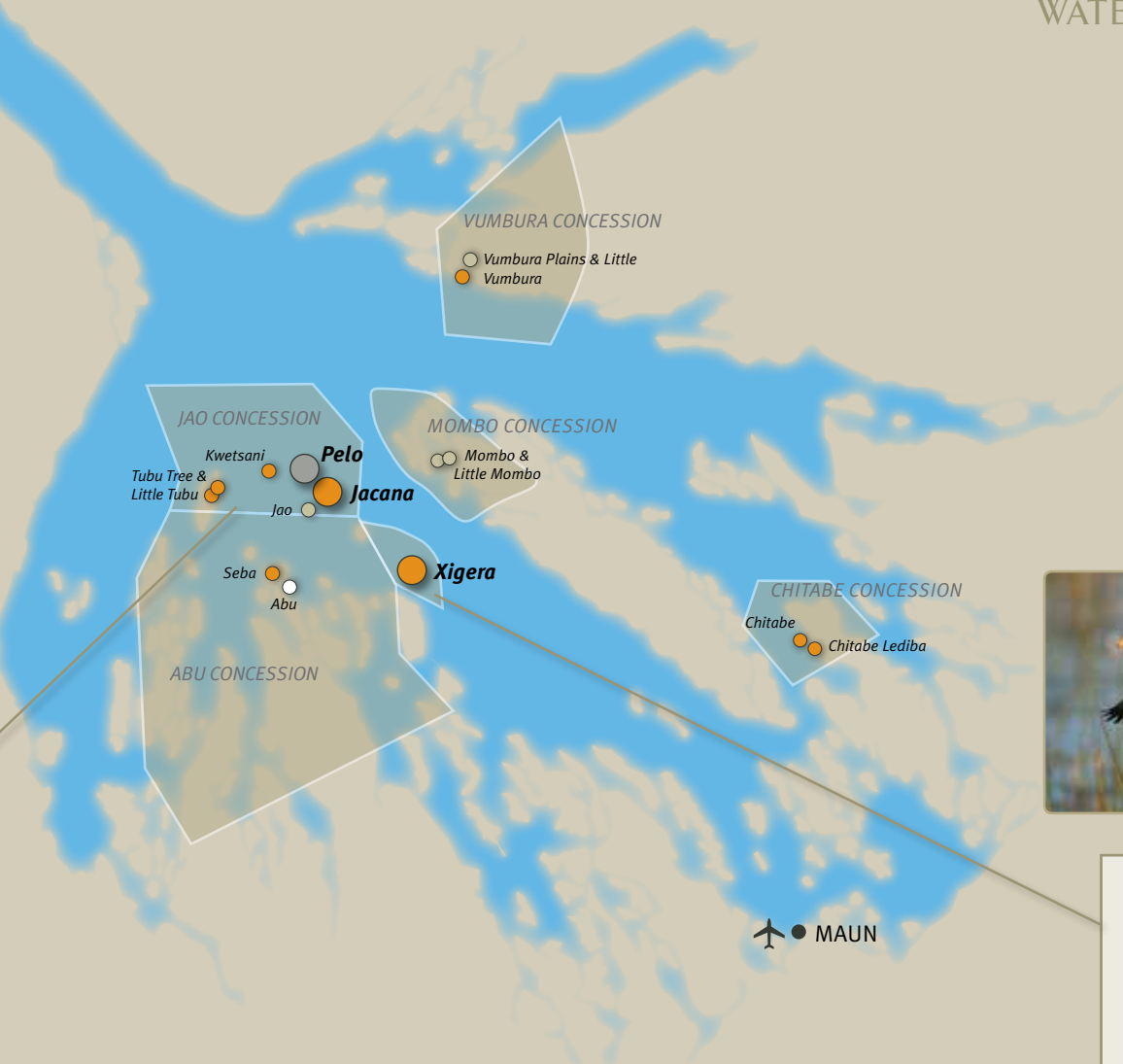
Jao Concession

60 000 hectares (148 000 acres); vegetation varies from picturesque floodplains with lush palm islands and riparian forest of the Jao Flats to Hunda Island, covered in acacia and mopane woodland – the largest expanse of dry land during the annual inundation.

Camp Categories

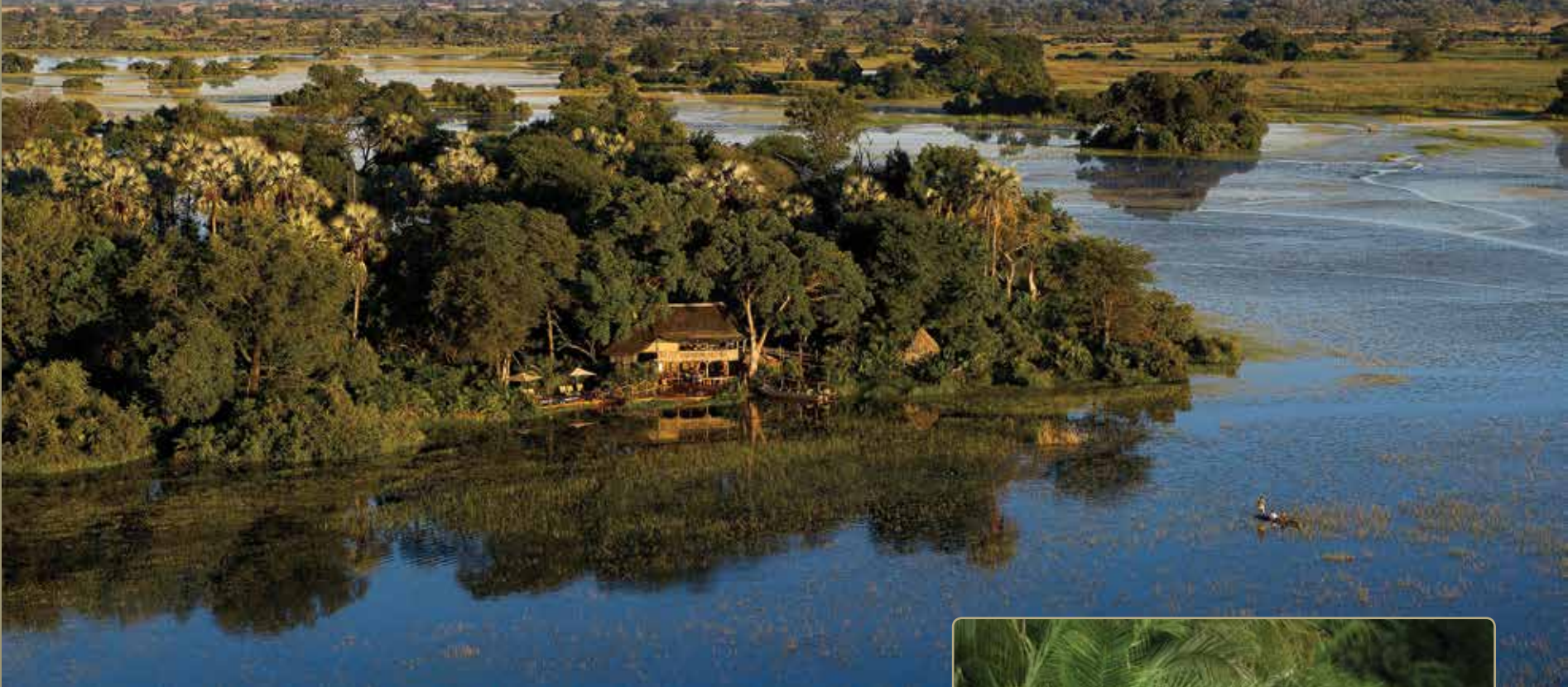
Collection Premier Classic Adventures

WATER CAMPS IN THE OKAVANGO DELTA



Xigera Concession

6 000 hectares (14 000 acres); a wetland paradise within Moremi Game Reserve in the heart of the Okavango Delta. Situated on one of the Okavango's key waterways, it is surrounded by picturesque papyrus swamps and wooded islands.



Jacana Camp

Jacana Camp lies on a beautiful island that is surrounded by water for most of the year, making it a true camp of the central Delta. The dining area lies on an elevated wooden deck between two enormous sycamore fig trees, surrounded by dense wild date palms. Downstairs, there is a cosy lounge under thatch with a large deck, an open fire under the stars, and a plunge pool. Meals are often enjoyed outdoors under the stars.

Highlights

Whether from boat or mokoro, or simply looking out from your deck, wildlife at home in (or drawn to) the blue waters is evident: herds of red lechwe, hippo, crocodile and spotted-necked otter are the obvious inhabitants, followed by elephant wallowing in the shallows and, if you're lucky, elusive sitatunga or predators like lion and leopard. True Okavango bird specials include Pel's fishing-owl and the endangered wattled crane.

A crystal-clear water wonderland harbouring the Okavango Delta's most elusive species.





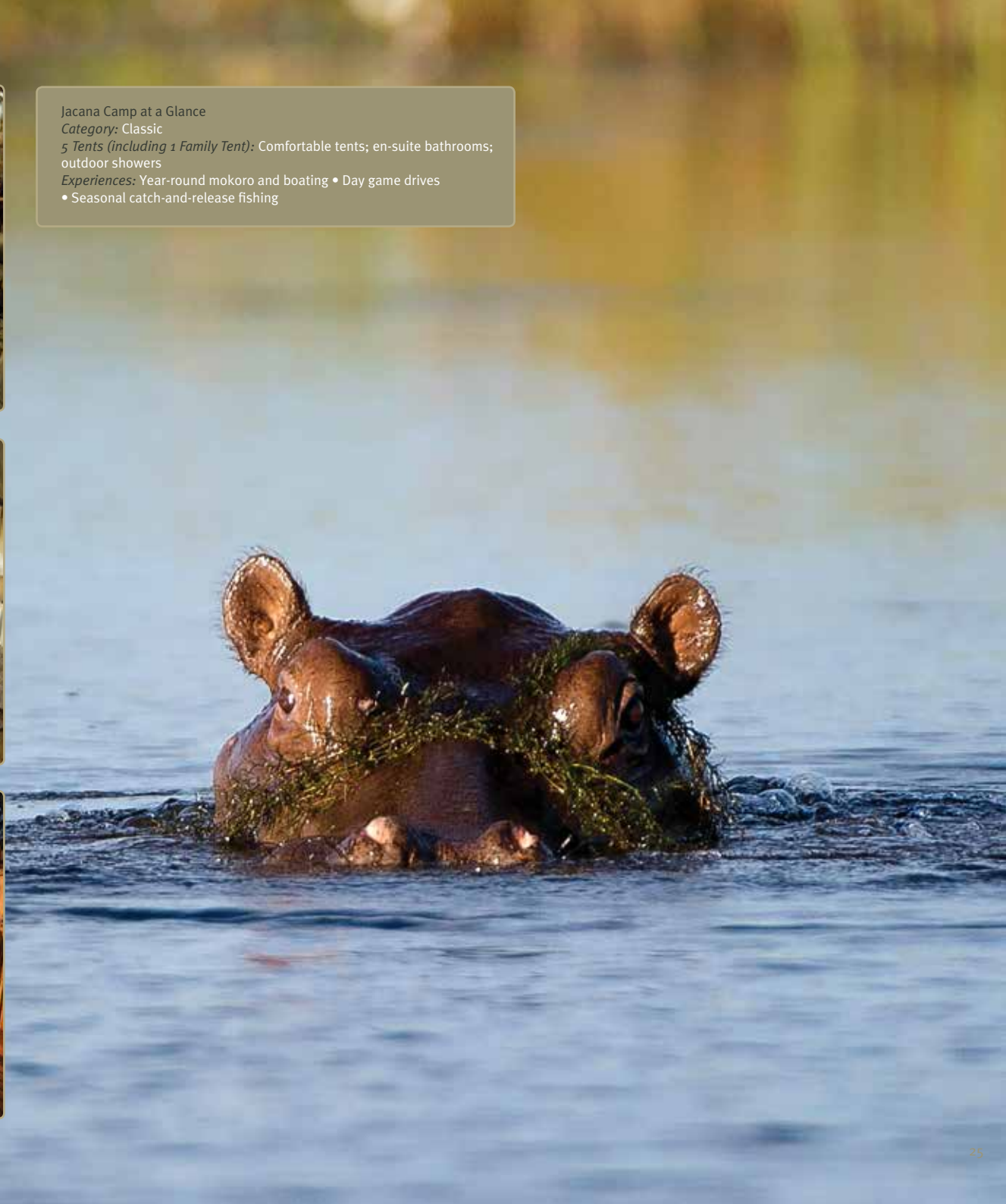
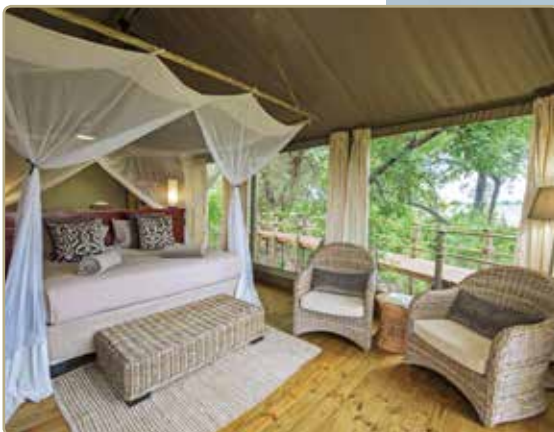
Jacana Camp at a Glance

Category: Classic

5 Tents (including 1 Family Tent): Comfortable tents; en-suite bathrooms; outdoor showers

Experiences: Year-round mokoro and boating • Day game drives

• Seasonal catch-and-release fishing





Pelo Camp

The word pelo means ‘heart’ – a fitting name as, from the air, the island on which Pelo Camp lies is heart-shaped. Impressive wild date palms, jackalberry and Natal mahogany trees shelter a tented dining area and lounge and five intimate en-suite guest tents.

The outdoor boma is the perfect area for convivial dining while the raised platform offers spectacular views by day and breathtaking star-gazing by night.

A true water camp, immersed in the heart of the Delta

Highlights

The camp’s situation on an exquisite, small island surrounded by permanent water allows for the discovery of fascinating water-loving creatures. This habitat is ideal for the elusive sitatunga antelope, lechwe, hippo, crocodile and elephant, while impala, lion, leopard and buffalo are sighted occasionally. Birdlife is exceptional with the largest concentrations of the Endangered wattled crane found here as well as slaty egret, rosy-throated longclaw, African skimmer and Pel’s fishing-owl.





Pelo Camp at a Glance

Category: Adventures

5 Tents: Wood and canvas tents; en-suite bathrooms; deck overlooking permanent floodplain

Experiences: Mokoro excursions • Motorboat outings • Nature walks • Seasonal catch-and-release fishing



Xigera Camp

Deep in the Delta, in lush, verdant shade and surrounded by flowing channels of crystal-clear water, lies Xigera (pronounced Keejera) Camp, on the aptly named Paradise Island. Meals are enjoyed in the lounge and dining area overlooking one of the myriad channels, or under the stars in a traditional African boma. A star deck and plunge pool round out the experience.

Highlights

Being enveloped by water on all sides allows you to fully experience the inundation of the annual floodwaters that move slowly along channels and into lagoons during the winter months, before retreating as summer approaches. Water-loving red lechwe, spotted-necked otter, elephant and tsessebe make their home here, as do predators such as leopard and spotted hyaena. There is even a chance of seeing the elusive sitatunga in the riverbeds. Birders will delight in avian fishermen, such as Pel's fishing-owl, African skimmer and slaty egret.

*The idyllic
waterway- and
papyrus-patterned
heart of the
Okavango Delta.*



Xigera Camp at a Glance

Category: Classic

10 Tents (including 1 Family Tent): Wood and canvas tents; en-suite bedrooms; deck overlooking seasonal floodplain; outdoor shower

Experiences: Mokoro excursions • Motorboat outings • Morning and afternoon game drives (water levels dependent) • Fishing (seasonal and on request outside Moremi Game Reserve)

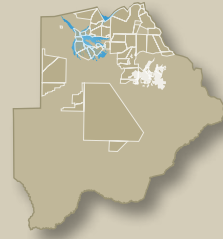
THE OKAVANGO DELTA – COMBINATION CAMPS

While some areas of the Okavango are very distinctly either land- or water-dominated, many fall into a blend between the two – a mix of dry land and watery habitats that give visitors access to representative parts of the overall Okavango experience. How much water or how much land varies, depending on the time of year and the exact location within the Okavango Delta.

These areas tend to lie on the outer fringes of the permanent swamp and as a result, have a mix of habitats that range from permanent water, open channels and lagoons, to seasonal floodplain, acacia woodland and scrub fringe and even dense mopane woodland. Consequently, activities in the camps in these areas are a diverse mix of game drives, walks, boating and mekoro – different vehicles used to access different areas and experience their associated wildlife.

It is for this reason that the camps in these areas are known as “combination camps.”

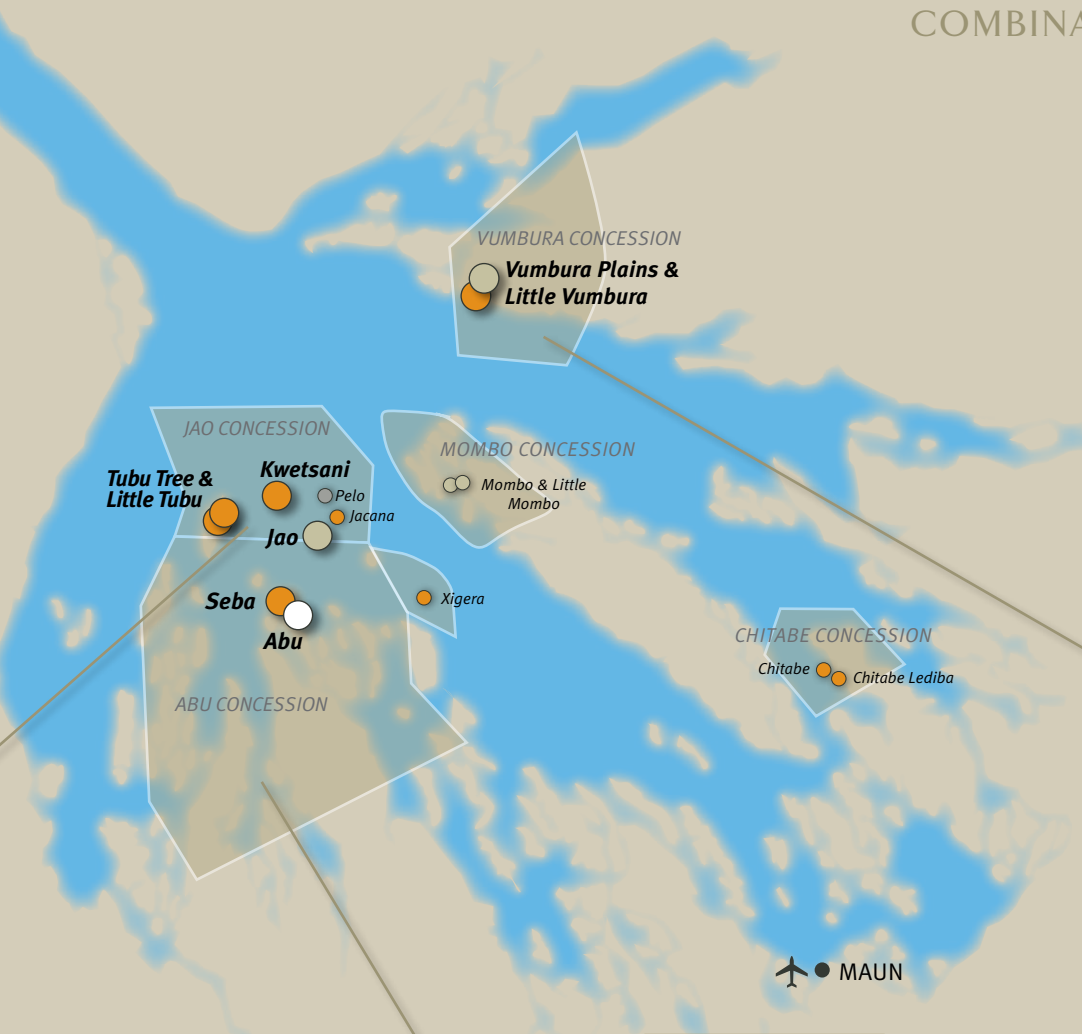
In such camps – depending on both seasonality and the wishes of our guests – a three-night stay might be weighted more towards either wet or dry land experiences and activities. An early morning mokoro trip on lily-clad waters might be combined with an afternoon and evening game drive in search of predators, while the following day would see an extended fishing trip by boat. Walks might form part of a game drive or the entire activity.



Jao Concession

60 000 hectares (148 000 acres); vegetation varies from picturesque floodplains with lush palm islands and riparian forest of the Jao Flats to Hunda Island, covered in acacia and mopane woodland – largest expanse of dry land during the annual inundation.

COMBINATION CAMPS IN THE OKAVANGO DELTA



VUMBURA CONCESSION
Vumbura Plains & Little Vumbura

JAO CONCESSION
Tubu Tree & Little Tubu
Kwetsani
 Pelo
 Jacana
Jao
Seba
Abu
 ABU CONCESSION

MOMBO CONCESSION
 Mombo & Little Mombo
 Xigera

CHITABE CONCESSION
 Chitabe
 Chitabe Lediba

✈️ • MAUN



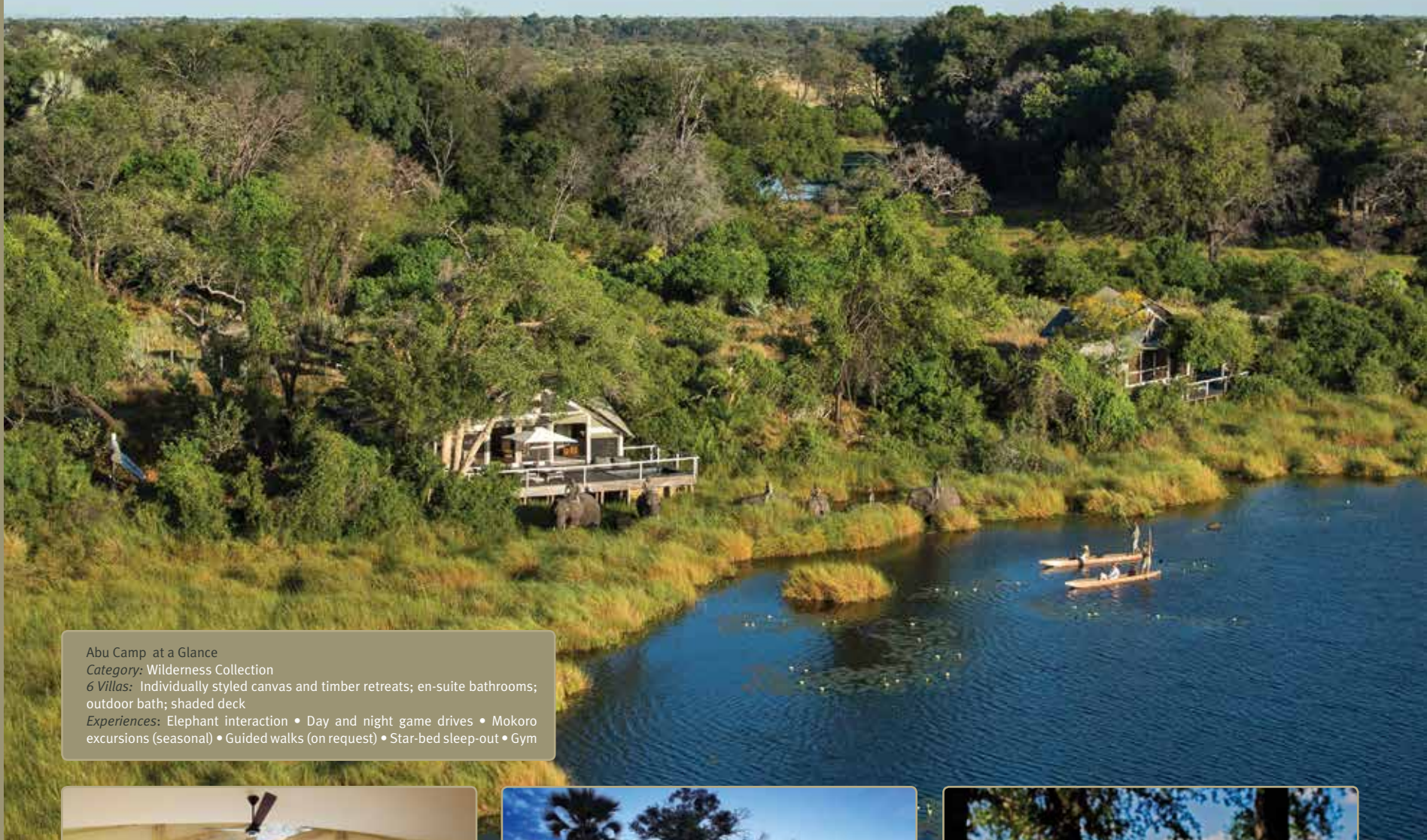
Vumbura Concession
 60 000 hectares (148 000 acres); an incredibly varied mix of mopane, acacia woodland, floodplains and permanent swamp. This diversity of vegetation is matched by an equal range of wildlife.

Abu Concession
 180 000 hectares (450 000 acres); in the south-west of the Delta; varies from seasonally inundated floodplains, channels and palm islands in the north-east to the dryer Kalahari 'sand tongue' in the west.



Camp Categories

- Collection
- Premier
- Classic
- Adventures



Abu Camp at a Glance

Category: Wilderness Collection

6 Villas: Individually styled canvas and timber retreats; en-suite bathrooms; outdoor bath; shaded deck

Experiences: Elephant interaction • Day and night game drives • Mokoro excursions (seasonal) • Guided walks (on request) • Star-bed sleep-out • Gym





Abu Camp

The light, airy villas of majestic Abu Camp nestle below ancient sycamore figs overlooking a permanent lagoon. Dappled shade and lush surrounds create an idyllic environment in which the sophistication of the lounge and dining area with well-stocked library and anticipatory personal service is at ease with a relaxed home-from-home experience. The same is true of the culinary offering, five-star haute cuisine side by side with pizza straight from the traditional oven.

Highlights

Encounters and activities with the Abu Elephant Herd provide magical moments whether in camp, or out in the natural splendour of the Delta. Abu's floodplains and islands host herds of red lechwe, zebra, giraffe and tsessebe, while clans of spotted hyaena, secretive leopard and even prides of lion are the predators in chief. Spend an evening curled up near the elephants in the unique "star-bed" while the herd slumbers below.

The extraordinary privilege of being part of an African elephant herd.





Jao Camp at a Glance

Category: Premier

9 Tents (including 1 Family Tent): Open-plan individually handcrafted luxurious canvas and thatched rooms; en-suite facilities; outdoor shower; private sala
Experiences: Mokoro • Boating (seasonal) • Seasonal catch-and-release fishing • Day and night game drives • Seasonal hide for sleep-outs or game viewing



Jao Camp

Located on a large island in the heart of the Okavango, Jao Camp's individually handcrafted and luxurious tents look out onto the essence of the Delta – swathes of water, swaying reeds, leaping lechwe and dancing cranes. The main area is an elaborate two-storey wooden structure with lounge and dining area, two plunge pools, a library, curio shop and boma for dining under the stars, complemented by an excellent wine cellar. An award-winning spa and gym epitomise luxury in the most remote, scenically splendid setting.

A sophisticated and hidden Okavango Delta retreat.

Highlights

Jao's position – amongst waterways and lagoons, yet close to dry Kalahari woodland – means you can enjoy both land and water experiences, depending on the time of year and the level of the waters that move ceaselessly through the area. Here, spectacular herds of red lechwe are followed by lion and leopard, while other game includes tsessebe, giraffe, elephant, hippo and crocodile, occasional sitatunga and regular spotted-necked otter.





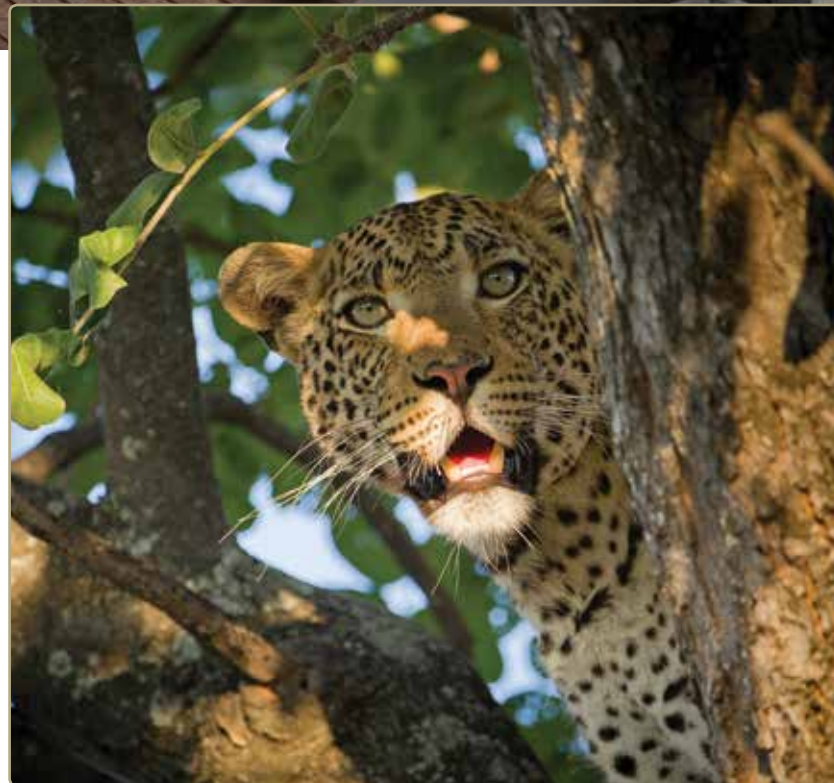
Vumbura Plains

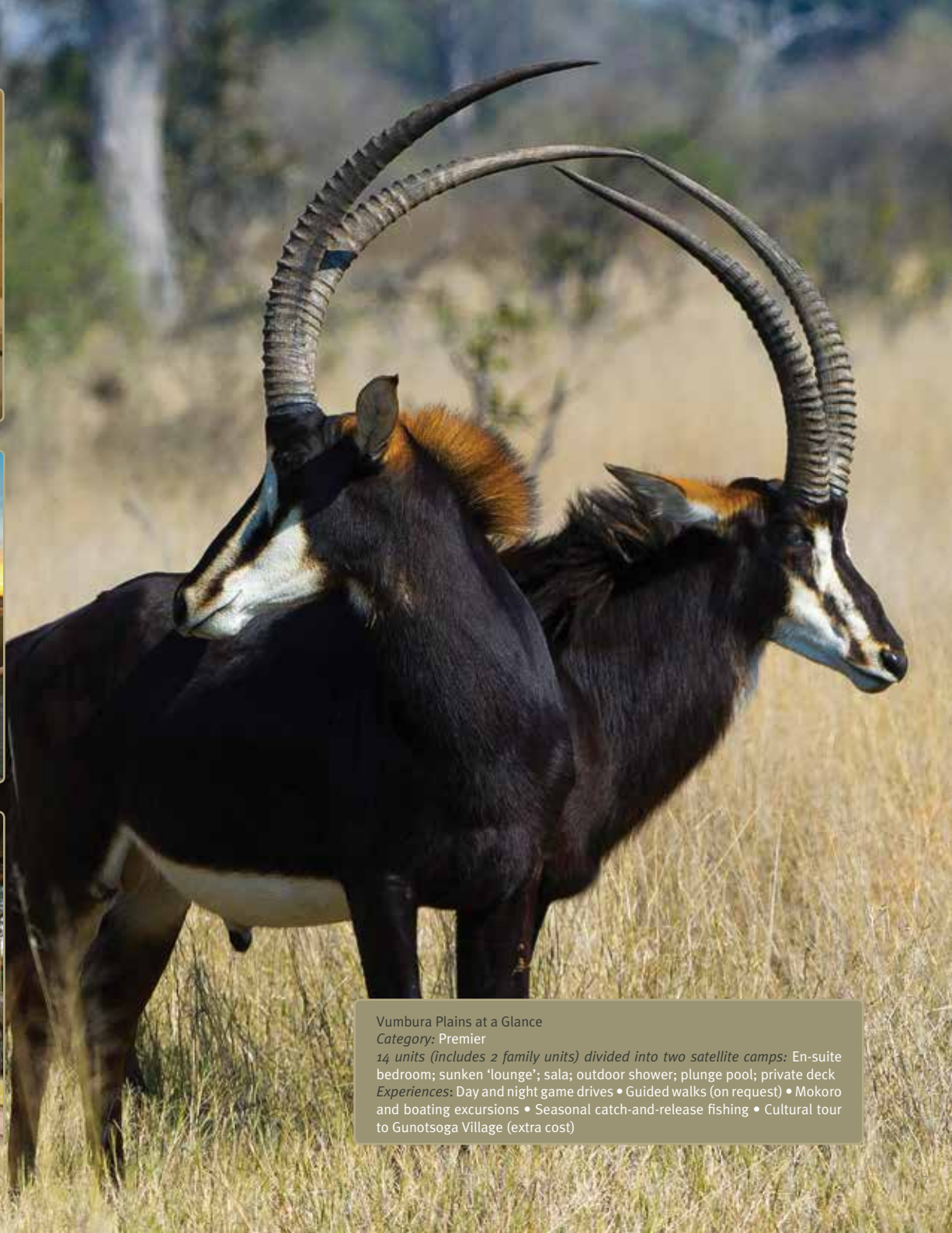
Vumbura Plains, a luxurious retreat of contemporary design, seems to float on a sea of waving reeds, situated as it is in the midst of a large floodplain. The sumptuous rooms are uniquely designed, spacious and raised off the ground on wooden decks to take in a wide-angled vista.

Highlights

Because the area is a mix of water and dry land, wildlife is diverse, for example, water-loving lechwe can be seen splashing through the reeds from your deck, while the sable of the dry savannah is spotted on game drives. Lion, leopard, elephant, cheetah and buffalo along with all the plains animals and prolific birds provide an excellent all-round wildlife experience in an unspoilt region of the Okavango. Vumbura Plains is situated in a concession leased from remote rural communities organised under the Okavango Community Trust and aims to help bring the benefits of ecotourism to local people.

Eco-retreat of contemporary design offering the best of the Okavango's wildlife and activities.





Vumbura Plains at a Glance

Category: Premier

14 units (includes 2 family units) divided into two satellite camps: En-suite bedroom; sunken 'lounge'; sala; outdoor shower; plunge pool; private deck
Experiences: Day and night game drives • Guided walks (on request) • Mokoro and boating excursions • Seasonal catch-and-release fishing • Cultural tour to Gunotsoga Village (extra cost)





Kwetsani Camp

Kwetsani is situated on an elongated island covered with palm, mangosteen and fig trees. The dining and lounge area, with its large wooden deck and cool thatched roof, is raised high above the ground and overlooks an expansive floodplain. A walkway leads to a plunge pool with loungers – a perfect spot to relax at midday.

Island tree-houses overlooking a picture-perfect, lechwe-dotted floodplain.

Highlights

Kwetsani offers excellent land and water activities dependent on annual inundation levels. Lion, leopard, lechwe and tsessebe are among the major game attractions, while hippo, sitatunga and crocodile reside in the deeper, permanently lily-filled lagoons. Incredible vistas of the surrounding floodplains dotted with lechwe, other plains game and even lion can be seen from the decks or from the comfort of your tent.



Kwetsani Camp at a Glance

Category: Classic

5 Tents: Airy 'tree-house' chalets of thatch, wood, glass and canvas; en-suite bathrooms; outdoor shower; connected with wooden walkways

Experiences: Game drives • Mokoro excursions • Boat trips to Hunda Island for game drives (seasonal) • Seasonal hide for sleep-outs or game viewing

Little Vumbura

Little Vumbura epitomises island living in the midst of a water wonderland. Designed to blend in with its surroundings, this beautiful camp is shaded by the canopy of an ancient Okavango forest that covers the island. A plunge pool and reading area are raised to provide a fine view over the floodplains and a star-deck leads off over the water from the dining area.

Iconic and perennially popular Okavango island camp with great game viewing.

Highlights

Surrounded as it is by water and lying close to large channels, aquatic creatures are easily found, but general wildlife viewing is consistently good all year round, with lion, leopard, elephant, sable and buffalo along with extensive plains game. Little Vumbura is situated in a concession leased from remote rural communities organised under the Okavango Community Trust and aims to help bring the benefits of ecotourism to local people.

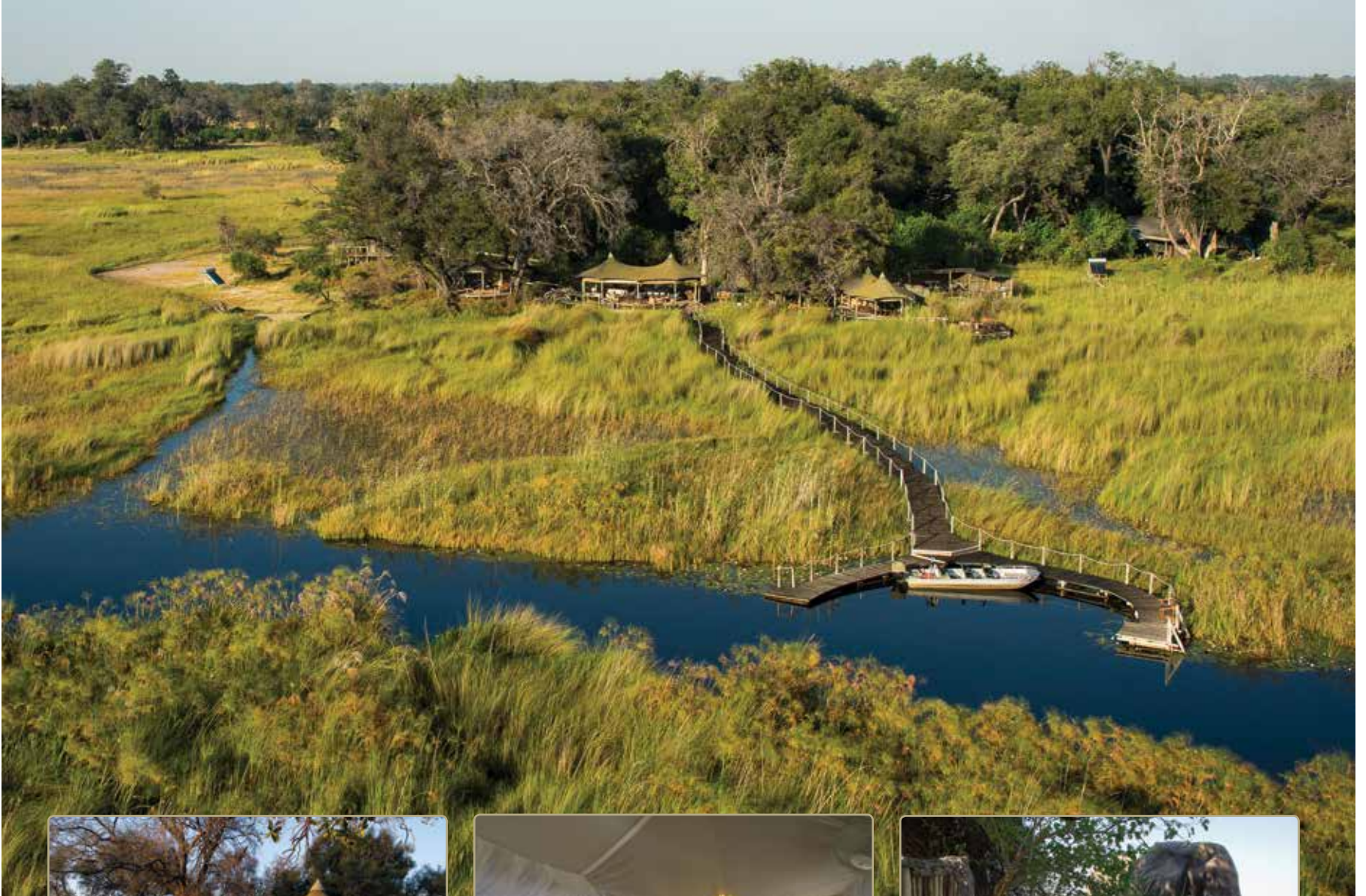


Little Vumbura at a Glance

Category: Classic

6 Tents: Well-appointed canvas tents; en-suite bathrooms; honeymoon suite has an outdoor bathtub

Experiences: Game drives • Mokoro excursions • Boating • Guided walks (on request)



Seba Camp at a Glance

Category: Classic

8 Tents (including 2 Family Suites): Elevated, spacious tents; en-suite bathrooms; private deck

Family Suites: Two connected, en-suite double bedrooms; upstairs lounge with pull-out sleeper couch

Experiences: Day and night game drives • Guided walks (on request)

• Catch-and-release fishing (seasonal) • Mokoro excursions on the waterways (seasonal)





Seba Camp

Family-friendly Seba Camp overlooks a perennial lagoon with prolific birdlife and resident pods of hippo. Each tent celebrates the different ethnic groups of Botswana through vibrant décor, while the main area – including dining area, bar and lounge-library – is set on a raised saligna deck with floodplain views. There is ample space for children in the purpose-built family suites – including a built-in ‘tree-house’ and an elevated deck which has its own small swimming pool.

Introduce your young family to the wonder and magic of wild Africa.

Highlights

The large elephant population aside, a growing abundance of game graces the area: giraffe, zebra, impala, wildebeest, tsessebe and lechwe. Lion, leopard and hyaena are regularly found nearby, herds of buffalo are occasional visitors, and there are excellent opportunities to see the rare roan antelope.





Tubu Tree

Tubu Tree lies on the remote Hunda Island, the largest area of permanently dry land in this region of the Okavango Delta. As its name implies, it lies in the dappled shade of large trees, its raised dining and lounge, pool and open bar areas almost within the canopy of a marula tree and looking out over a grassy floodplain. The whole camp is connected by raised wooden boardwalks so that one can literally wander amongst the leaves.

Highlights

Tubu Tree's location and easy access to both water and dry-land habitats, ranging from dry Kalahari sandveld to mopane and riverine forest edging on permanent waterways, ensures varied and spectacular game viewing. There are good concentrations of zebra and wildebeest on the floodplains as well as elephant, red lechwe, tsessebe and giraffe. Leopard and spotted hyaena viewing is particularly good.

Remote leopard viewing enclave on the western floodplains of the Okavango.



Tubu Tree at a Glance

Category: Classic

8 Tents (including 1 Family Tent): Raised on wooden platforms, en-suite bathrooms; outdoor shower; private front deck

Experiences: Day and night game drives • Boating and mokoro excursions (seasonal) • Catch-and-release fishing (seasonal) • Seasonal hide for sleep-outs or game viewing





Little Tubu at a Glance

Category: Classic

3 Tents: Raised on wooden platforms, en-suite bathrooms; outdoor shower; private front deck

Experiences: Day and night game drives • Boating and mokoro excursions (seasonal) • Catch-and-release fishing (seasonal) • Seasonal hide for sleep-outs or game viewing





Little Tubu

Little Tubu is located near its sister camp, Tubu Tree, on the isolated Hunda Island. Nestled amongst a broad swathe of trees overlooking a seasonal floodplain, Little Tubu offers an exceptional and intimate bush experience for a maximum of six guests. Elevated walkways link the tents to the main dining and pool areas that are designed to blend seamlessly into the surrounding environment and maximise the spectacular views. A convivial bar area is built into a waterberry tree.

Intimate and exclusive sister to Tubu Tree Camp.

Highlights

Wildlife seen around Little Tubu includes elephant, Burchell's zebra, red lechwe, giraffe, tsessebe, and blue wildebeest on the floodplains. Kudu, impala, bushbuck and leopard are also seen in the forested areas. The variety of birdlife is impressive, with dry-land species seen on the larger islands and a multitude of wetland birds seen on the floodplains and waterways.



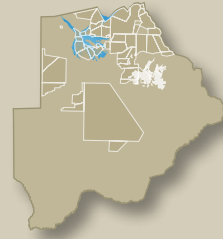
THE LINYANTI

To the north-east of the Okavango Delta, Botswana shares a border with a stretch of Namibia known as the Caprivi Strip. On the Botswana side of the border – a line marked by the meandering Linyanti River – lie the Linyanti Concession and the well-known Chobe National Park.

The area is unique in several ways: the Savute Channel, once dry and now a flowing river; the Selinda Spillway, a channel that links the Okavango and Linyanti systems; the productive Linyanti Marsh; and extensive mopane woodlands.

These four features, together with the many varied habitats within these areas – marshes, waterways, riverine forests, dry woodlands and grasslands – harbour one of the densest dry-season concentrations of elephant in Africa, one of the main attractions for travellers to northern Botswana. There are also significant concentrations of predators however, from large prides of lion, to the critically endangered wild dog, as well as leopard, spotted hyaena and cheetah. Its vast expanse also provides refuge for specialised antelope such as roan and sable. In short, it is one of Botswana's most important and expansive wildlife areas with natural migrations by species such as elephant and zebra taking place over long distances.

The prolific and diverse wildlife and spectacular scenery together form a wonderful contrast to the Okavango; in many ways, it is an essential complement to it. Adding this area to a Botswana itinerary makes for a varied and balanced experience of the country.



CAMPS IN THE LINYANTI



Linyanti Concession
121 000 hectares (299 000 acres); borders Chobe National Park's western boundary; comprises mopane woodland, riverine forest and floodplain. It is bisected by an ancient watercourse: the now-flowing Savute Channel, currently a year-round water source.

Camp Categories

- Collection
- Premier
- Classic
- Adventures



Kings Pool

This stylish camp, named for Scandinavian royalty, overlooks the oxbow-shaped Kings Pool Lagoon. The lounge and dining areas are set on expansive decks that echo the natural spaces, and there is a pool and an open-air 'kgotla' (boma) for fine evening dining under the stars. End the day with sundowners on the elegant, colonial-style *Queen Sylvia* as she cruises down the Linyanti River.

Highlights

The area around Kings Pool is home to large elephant herds that traverse the area – especially in the winter months – together with wildebeest, zebra, giraffe, waterbuck, steenbok, warthog and roan. Predators such as lion, leopard, spotted hyaena and wild dog all follow. Two hides, one with the water at eye-level, are perfect places to spend your siesta: elephant feet and trunks almost within touching distance.

Historic safari base in the middle of Africa's highest density of elephants.





Kings Pool at a Glance

Category: Premier

9 Tents (including 1 Family Suite): Well-appointed canvas and thatch; large en-suite bedroom and lounge; veranda with private plunge pool; sala; outdoor shower

- Experiences:* Day and night game drives • Guided walks (on request)
- Unique sunken hide
 - Barge cruises along the Linyanti River
 - Catch-and-release fishing (seasonal)





DumaTau Camp

DumaTau means “roar of the lion,” but the elephant reigns here. The camp is set on a lagoon on the Linyanti River between two “elephant highways,” affording unparalleled viewing of these iconic mammals, along with other wildlife. Together with sweeping, dramatic views of the river, the architecture of the camp expresses the explorer aesthetic, as well as the idea of space. There is an airy dining and lounge area, and a pool, all taking advantage of the superb view of the lagoon.

Highlights

DumaTau is located close to the source of the Savute Channel, with access to the Linyanti Swamps, floodplains and extensive mopane woodlands, thus offering an excellent combination of land and river. During winter, large elephant herds traverse the area. Chances of viewing leopard, lion and wild dog are excellent, along with other large mammals like hippo, red lechwe, giraffe, waterbuck, kudu, impala and occasional buffalo.

Perhaps the best game viewing in far northern Botswana – from its most stylish camp.



DumaTau Camp at a Glance

Category: Classic

10 Tents (including 2 Family Tents): En-suite; spacious; raised off the ground; clear-storey window; 100% solar powered

Experiences: • Day and night game drives • Nature walks (on request)
• Boating (seasonal) • Barge excursions • Game viewing hides • Catch-and-release fishing (seasonal)



Savuti Camp

Savuti Camp is located right on the Savute Channel, which for many years was dry, a wide-open ribbon of grassland snaking through the adjoining woodland. In 2008, the waters returned, and abundant game has congregated and adapted in its wake.

Savuti Camp is elevated off the ground, thus taking front row seats to view the results of the amazing transformation of the resurgent Channel. A thatched dining area, pool and large viewing deck with fire pit extend outwards on raised wooden decks over the waters.

Highlights

Exploring the length of the Savute Channel and its associated woodlands is a highlight here. Game concentrations are high, particularly in the winter dry season, and apart from elephant and plains game, species such as zebra, roan, giraffe, lion, leopard and wild dog may also be encountered.

*Experience “the
Vanishing River”
that reappeared!*





Savuti Camp at a Glance

Category: Classic

7 Tents (including 1 Family Tent): En-suite; spacious canvas-and-thatch walk-in tents

Experiences: Day and night game drives • Guided nature walks (on request)

• Game viewing hides • Boating excursions (seasonal)



THE CENTRAL KALAHARI

South of the Okavango Delta and towards the centre of Botswana, emerges the vast Kalahari Desert, the largest unbroken stretch of sand in the world, extending from South Africa through to the Congo.

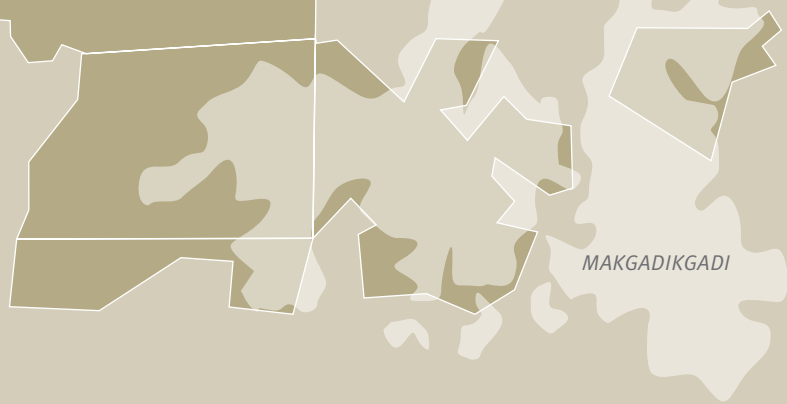
From above, its flat, apparently featureless surface appears barren in places, but in fact it is home to a full spectrum of plants, animals and people (the ancient San or Bushman clans) that have successfully adapted to life in this harsh environment.

The name is something of a misnomer, as it is no true desert, but a dry savannah with diverse ecosystems at its edges. At its core is the Central Kalahari Game Reserve, an enormous expanse of gently undulating fossil dunes covered in grasses and intersected by ancient river valleys where water no longer flows. Here, each year, in the ancient fossil riverbeds – Deception, Passarge, Letiahau, Okwa – and associated pans, the brief spring rains create the miracle of endless seas of nutritious grasses that attract large concentrations of gemsbok, springbok and red hartebeest, their newborn calves and lambs, followed inevitably by predators such as lion, cheetah and black-backed jackal.

The Kalahari as a whole, with its striking contrast to the verdant Okavango and Linyanti regions, adds significantly to Botswana's already overwhelming diversity. Here, one's eyes need a wide-angle lens to take in the waving grass and gnarled acacia trees that stretch to a distant horizon at which the sky comes down to meet the earth.



CAMP IN THE CENTRAL KALAHARI



Central Kalahari Game Reserve

Five million hectares (12 million acres); one of the largest protected areas in Africa. A vast flat expanse of scrub-covered fossil dunes interspersed with ancient river valleys; acacia savannah areas hold significant populations of predators. Impressive plains game populations move seasonally between dune and valley: in summer the flatlands are filled with wildlife whilst in winter they gather around waterholes. Over 220 bird species include many arid-west endemic species.

Camp Categories

- Collection
- Premier
- Classic
- Adventures



Kalahari Plains Camp at a Glance
Category: Classic
8 Tents (including 1 Family Tent): En-suite canvas units; rooftop sleep-out area
Experiences: Morning and afternoon game drives • San Bushman experience • Day trips to Deception Valley



Kalahari Plains

Kalahari Plains, overlooking an immense grassy and fertile pan with endless horizons and beautiful skies, is raised off the ground to catch the breeze and take in sweeping views across the Kalahari by day and star-filled skies by night. Solar power provides electricity and hot water, and innovative insulated canvas walls and roof keep the temperatures inside comfortable. The lounge and dining area, also raised, are perfect for watching wildlife in front of camp.

Highlights

The Central Kalahari Game Reserve is famed for its outstanding wildlife. This region offers some of the best summer wildlife viewing in Africa; the desert springs to life attracting vast herds of antelope (principally springbok, gemsbok, red hartebeest and blue wildebeest) followed by abundant predators – including the legendary black-maned Kalahari lion and cheetah, offering perhaps Botswana’s best viewing of this species. The unique culture and traditional lifestyles of the San Bushman people are celebrated here by San staff from the area.

*Endless skies,
ancient cultures,
abundant summers
and insightful
winters.*





Coalition of cheetah – Kalahari Plains Camp



Springbok



Gemsbok



Black Korhaan





OUR EXPLORATIONS

Set out under the African sun to explore some of the continent's prime wilderness areas with our exclusive Explorations safaris. These spectacular guided journeys allow guests to discover remote and pristine areas in diverse private concessions while enjoying the most outstanding wildlife viewing. Our fully-serviced cross-country safaris cater for small groups (operating with a minimum of two and a maximum of eight guests) on a scheduled basis or are tailor-made for private groups. All of which allow for the most authentic African experience today.

The secret to a fantastic Explorations trip is your personal guide, who leads the safari from beginning to end. Our guides are passionate, experienced and highly trained local individuals who make the whole journey seamless and interpretive from start to finish. More than just talented naturalists, many are skilled photographers and can assist you in taking amazing wildlife images. These guides are also available to lead private tailor-made safaris and specialist trips in any of our concessions and camps – some even offering multilingual experiences.

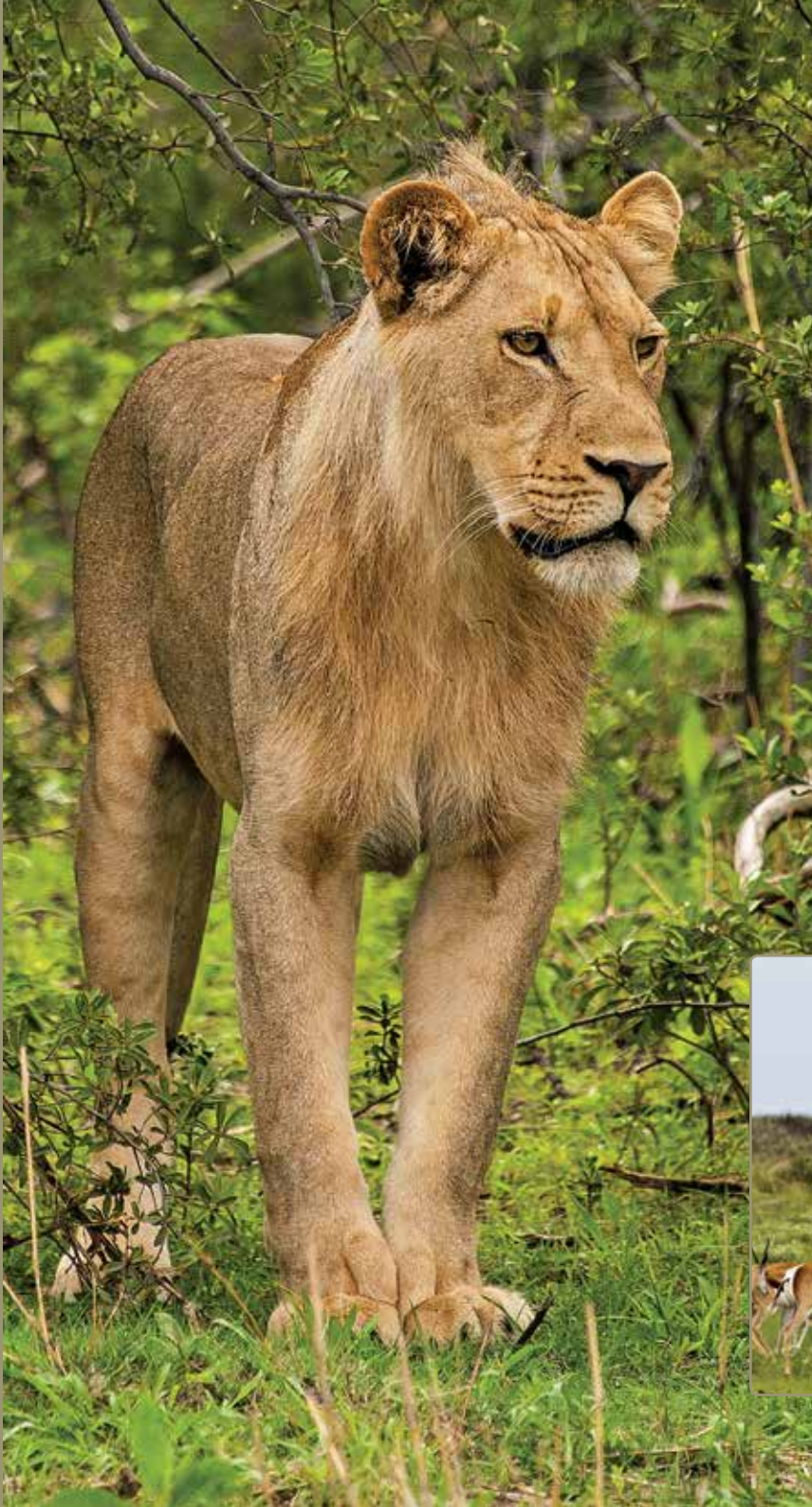
While on an Exploration, you may experience a number of different accommodation styles, including our own unique Discoverer and Adventurer camps.



Discoverer Camps are private camps that are set in secluded locations with outstanding wildlife viewing. Each camp enjoys creature comforts in semi-permanent wood and canvas tents with en-suite bathrooms. The main area is comfortable and intimate with lounge, dining room and outdoor boma as well as charging facilities.



Adventurer Camps are set up for the season and comprise either walk-in dome tents or mini-Meru tents, with en-suite hot bucket showers and toilet facilities. Hammocks and safari camper chairs are ideal for midday siestas. Dining under the stars and around the fire is part of an authentic safari experience.



Botswana Summer Encounter

This Exploration begins in the “fossil” river valley of Deception Valley, Central Kalahari Game Reserve, where the life-giving summer rains attract wildlife in large numbers. From here, continue through the fertile green islands and crystal-clear waterways of the Okavango to the wildlife-rich Linyanti and Chobe River systems, ending at the world-famous Victoria Falls on the Zambian side of the Zambezi River.

Experience Botswana in one of its most abundant and remarkable seasons.

Brief Itinerary

Days 1, 2 & 3: Arrive in Maun and fly to Central Kalahari

Game Reserve, then game drive to Deception Valley Trails Camp

Days 4 & 5: Overland to Maun (approx. 6 hours) and then fly to Xigera Camp, Okavango Delta

Days 6, 7 & 8: Fly to Linyanti Discoverer Camp, Linyanti Concession

Day 9: Fly to Kasane for Chobe River boat cruise; then road transfer to Toka Leya, Livingstone

Day 10: Guided tour of Victoria Falls; road transfer to Livingstone Airport



Map Key

- Classic
- Explorations Discoverer/Adventurer/Trails
- - - Air Transfer
- Road Transfer



Botswana Summer Encounter at a Glance
Type: Discoverer
Duration: 9 nights / 10 days
Regions: Central Kalahari • Okavango • Linyanti • Chobe • Victoria Falls
Experiences: Life-filled summer season of Botswana revealed, in prime areas where few people travel • Mix of old-style serviced camping and luxury Wilderness Safaris camps
Activities: Game drives, walks, mokoro and boat excursions • Deception Valley • Chobe River Boat Cruise • Guided tour of Victoria Falls
Notes: This Exploration runs between December and February.

Great Wilderness Journey

Long ago, explorers made their pioneering way along the dusty paths of Africa, allowing the great continent to seep into their souls. This journey takes the time to experience and explore Botswana's scenic northern areas: from the Victoria Falls, the widest curtain of falling water in the world, to the game-rich floodplains of Linyanti and Chobe, ending in the lush oasis of the Okavango Delta.

Brief Itinerary

Day 1: Arrive in Livingstone, guided tour of Victoria Falls; then road transfer to Toka Leya Camp, Mosi-oa-Tunya National Park, Livingstone

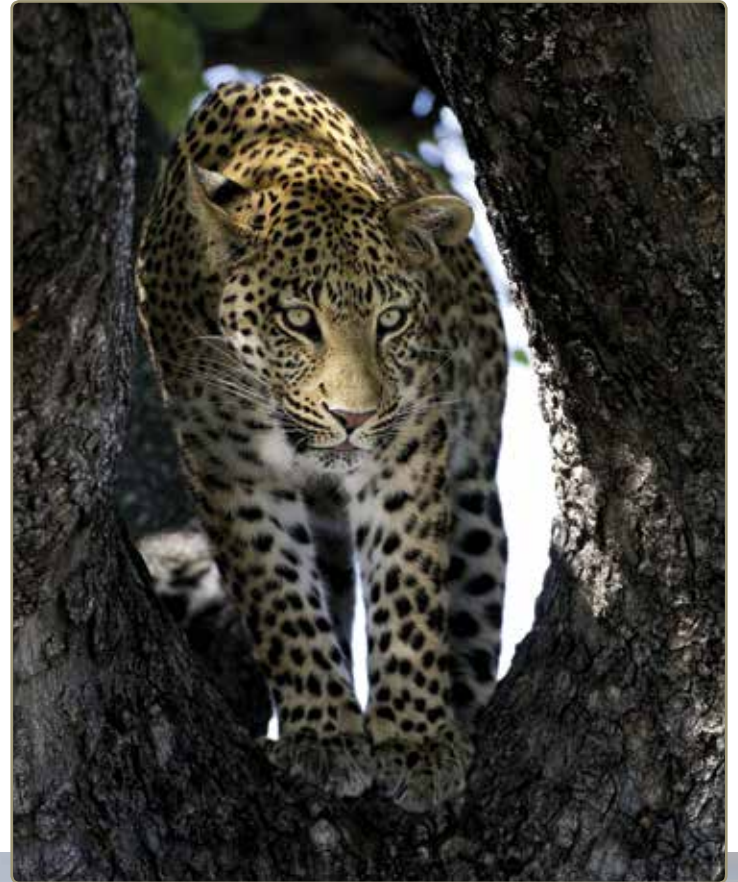
Days 2, 3 & 4: Air transfer to Kasane for Chobe River boat cruise; then fly to Linyanti Discoverer Camp, Linyanti Concession

Days 5, 6 & 7: Fly to Gomoti Tented Camp, Santawani Concession, south-eastern Okavango Delta

Days 8, 9 & 10: Fly to Jacana Camp or Xigera Camp, Moremi Game Reserve / Okavango Delta

Day 11: Fly to Maun Airport

Explore remote and pristine northern Botswana in exclusive private areas.



Map Key

- Classic
- Explorations Discoverer/Adventurer/Trails
- - - Air Transfer
- Road Transfer

ZAMBIA



ZIMBABWE

Linyanti Discoverer Camp

Khwai Discoverer Camp

Jacana Camp

Xigera Camp

MAUN



BOTSWANA

Great Wilderness Journey at a Glance
Type: Discoverer
Duration: 10 nights / 11 days
Regions: Victoria Falls • Chobe • Linyanti • Santawani • Okavango
Experiences: Three-night stays in private wilderness areas
Activities: Game drives, walks, mokoro and boating • Chobe River Boat Cruise • Guided tour of Victoria Falls





More Than Just a Safari

At Wilderness Safaris, our delight is to share the wild places of Africa with our guests, while our ultimate goal is to help make a difference to Africa, its people and its wildlife. As a guest, you are helping us to do so.

There is much more that needs to be done, however, which is why, over 20 years ago, we created the **Wilderness Wildlife Trust**, an independent entity that supports a wide variety of wildlife management, research and education projects throughout Africa. These projects address the needs of our wildlife, seek solutions to save threatened species and provide education and training for local communities. This has made our journey more meaningful and we've reached more people and places than before.

Conservation of animals and plants is only as strong as the people who live in their vicinity. If they're not interested, protection is likely to exist only on paper. That's why Africa's future lies in her children, and why our pride and joy is our **Children in the Wilderness** programme, which aims to educate the youth of Africa, inspiring and helping them to appreciate and thus protect their magnificent natural heritage.

Throughout the year, Eco-Clubs are held weekly at the local schools (i.e., schools situated near Wilderness Safaris areas), where our carefully formulated curricula provide opportunities for all learners who are interested in the environment to meet, learn, discuss and expand their knowledge of their natural heritage. In addition, every year, we close some of our camps for a week at a time and groups of 16 to 25 children between the ages of 10 and 14 are hosted, given the opportunity to experience these wilderness areas and their wildlife. Other initiatives include school scholarships, community upliftment projects and teacher assistance.

Our guests can be proud to be part of this life-changing journey.





Botswana lion genetics research – Mombo Concession



Children in the Wilderness – wildlife lesson in camp – Khwai Concession



Wild dog movement and predation research – Vumbura Concession

Rwanda

Home to a third of the world's population of mountain gorillas as well as other species of primates and birds, amidst rolling hills, forests and volcanoes.



Botswana

Home to the unique Okavango Delta, with incredible safari experiences here, in the Linyanti and the Central Kalahari.



Namibia

The world's highest sand dunes, vast conservation areas, desert-adapted wildlife and nomadic traditional tribal cultures.



South Africa

The 'Rainbow Nation' and host to the Kruger Park, Table Mountain, diverse cultures and some of Africa's best tropical diving.



Where Else In Africa?



Kenya

The roots of 'safari', and home to the planet's largest large mammal migration and the burgeoning herds of the Laikipia Plateau.



Seychelles

Sandy white-beaches, warm-ocean Eden and tropical escape filled with unique species found nowhere else on Earth.



Zambia

Known as 'the real Africa,' with space, wilderness and wildlife to match the claim, whether in Kafue or Victoria Falls.



Zimbabwe

Classic safari destination teeming with big game in Hwange and Mana Pools National Parks, as well as the majestic Victoria Falls.

Africa is vast. The so-called 'dark continent' is nearly one quarter bigger than all of North America (including Alaska, Canada, Mexico and the USA), and the entire European continent would fit into its land surface no less than three times.

It is also not as densely populated as is often believed. Population density is only 46% that of Europe and 35% that of Asia. Despite this, there are between 2 100 and 3 000 indigenous African languages and cultures, a diversity mirrored by the huge array of flora and fauna that occurs across the breadth of the continent.

This diversity of wildlife is unmatched anywhere else on the planet in terms of the range and numbers of large mammals – the megafauna. Africa plays host to more than 1 300 mammal species, while in comparison North America and Europe between them hold less than 600 species.

Vast intact savannah landscapes and ecosystems enable lion, herds of elephant, myriad plains game and even people to exist as they have done for thousands of years. The same is true of the rainforest and some of our closest relatives – chimpanzees and gorillas – as well as the deserts, off-shore islands and lakes.

The continent can be overwhelming in its multiplicity of destinations and experiences; to the left are a few of the highlights.



Exposure to traditional culture should be part of every safari – Banoka Bush Camp

Cover Image: Ona Basimane

Photographers list: Andrew Howard, Beverley Joubert, Brennan Rimer, Cathy Kays, Caroline Culbert, Clive Dreyer, Colin Bell, Dana Allen, Daniel Myburg, Dave Hamman, David Kneale, Dave Luck, Deon de Villiers, Derek de la Harpe, Diana du Cros, Dook Photo, Grant Atkinson, Lets Kamogelo, Michael Poliza, Micky Hoyle, Mike Myers, Olwen Evans, Russel Friedman, Ryan Green, Simon Hartinger, Tanya Merensky, Will Burrard-Lucas.

If we have left anyone out, this has not been intentional and we apologise.

READ MORE ABOUT US...

ONLINE



www.wilderness-safaris.com



www.wilderness-collection.com



www.wildernesstrust.com



www.childreninthewilderness.com



www.wilderness-the4cs.com



www.we-are-wilderness.com



www.facebook.com/wilderness.friends

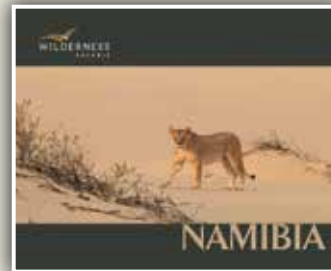


www.twitter.com/wearewilderness

IN PRINT



Wilderness Safaris – Africa



Wilderness Safaris – Namibia



Wilderness Safaris – Zimbabwe,
Zambia & Malawi



The Wilderness Collection


WILDERNESS SAFARIS



www.wilderness-safaris.com

Copyright © Wilderness Safaris 2014