



ZIMBABWE • ZAMBIA



Elephant crossing Busanga Plains (Kafue National Park, Zambia)

WHY ZIMBABWE AND ZAMBIA?

A SHARED HERITAGE

Zimbabwe and Zambia share an unbroken border along the Zambezi River of some 800 km (500 miles). This includes the magnificent Victoria Falls, Lake Kariba and the protected areas of the Lower Zambezi, as well as a number of cultures and ethnic groups. In short, the two have a lot in common.

The most obvious shared asset is the World Heritage Site of **Victoria Falls**, one of the world's Seven Natural Wonders, known locally as Mosi-oa-Tunya – “the smoke that thunders,” and a scenic, thrilling addition to any safari in the region. Regardless of the time of year or level of the water pouring over the edge of the Falls, the sight is breathtaking. In both countries, numerous adrenalin activities on the Zambezi River, such as river rafting, bungee jumping, abseiling and canoeing, are offered; this is the “adventure capital” of southern Africa.

WHY ZIMBABWE?

Zimbabwe is a landlocked country blessed with wonderful scenery, unspoilt wilderness areas and exciting wildlife. The country plays host to a variety of habitats, from the imposing granite hills of the Matopos, to majestic mountains, lush forests and beautiful streams in the Eastern highlands, and productive woodlands and plains in the lowlands. The Zambezi River forms the northern border of the country and its course includes the majestic Victoria Falls, the vast Lake Kariba and Matusadona National Park, and the legendary game viewing areas along its lower reaches in Mana Pools National Park. Forming the western border with Botswana is a vast protected area stretching through Hwange National Park, all the way to the Zambezi National Park in the north.

As such, there is much to attract the traveller, from wildlife viewing and scenic wonders to encountering the history of the Zimbabwean people going back thousands of years.

WHY ZAMBIA?

Zambia is a vast country, friendly and peaceful, with wildlife that is impressive, both in diversity and sheer numbers, and found in some of the wildest and most remote game areas on the continent. Birdlife is particularly prolific and ‘specials’ draw birders from all over the world. You can see more than a thousand black lechwe on the floodplains of Bangweulu, catch some of the biggest tiger fish in Africa within sight of a large elephant herd on the Lower Zambezi, fly over the mighty Victoria Falls in spate, view leopard on a kill at night in the South Luangwa, or drift over thousands of lechwe, puku, hippo and buffalo on Kafue's Busanga Plains in a hot air balloon.

Zambia retains the quintessence of Africa: superb wildlife and cultural encounters in one of the continent's least travelled and most rewarding wilderness destinations.

Chitsva chirimurutsoka

(New experiences and discoveries do not come to those who sit, but rather to those who travel)

Shona proverb



Contents



Why Travel with Wilderness Safaris	4
Our Camps	6
Between Camps	10
WELCOME TO ZIMBABWE	12
Hwange	14
Linkwasha Camp	16
Little Makalolo	18
Davison's Camp	20
Mana Pools	24
Ruckomechi	26
WELCOME TO ZAMBIA	30
Kafue	32
Shumba Camp	34
Busanga Bush Camp	36
Victoria Falls	40
Toka Leya	42
The River Club	44
More than just a Safari	48
Where else in Africa?	50



Pages 28 – 33

Kafue

Camps: Shumba Camp; Busanga Bush Camp

Open grasslands and floodplains of the Busanga Plains, amazing antelope diversity, tree-climbing lions and other predators



Pages 34 – 39

Victoria Falls

Camps: Toka Leya; The River Club

One of the Seven Natural Wonders of the World, wildlife along the Zambezi River, community projects, Wilderness Touring





Pages 20 – 25

Mana Pools

Camp: Ruckomechi Camp

Wild and remote Zambezi River and floodplain, dry season game concentrations, game viewing on foot



Pages 14 – 19

Hwange

Camps: Linkwasha Camp; Little Makalolo; Davison's Camp

Savannah mosaic of woodland and grassland, exceptional all year round, large herds of elephant, buffalo and plains game, large lion prides



Camp Categories

● Classic ● Adventures



Why Travel with Wilderness Safaris?

Today we have so much choice when it comes to travelling, it's often difficult to make a decision on the country in which to travel, let alone deciding with whom to travel. Wilderness Safaris makes the choice easy. Not only do we have camps and lodges in eight countries across Africa, but we have been based in Zimbabwe for some 20 years, and Zambia for 14. We love the remoteness, timelessness and diversity of the areas we operate in here and believe we offer our guests access to the region's best wilderness and wildlife areas.

- Wilderness Safaris offers our guests exclusive access to nearly 3 million hectares (8 million acres) of Africa's best wildlife areas. This equates to 3 000 hectares (8 000 acres) of private land per guest, creating a unique sense of seclusion, comfort, privacy and space. Experiences in our private concessions far exceed those in public access national parks.
- Our areas cover many habitats, encompassing parts of eight of Africa's eleven biomes, thus allowing for incredibly diverse and all-round experiences, whether in the savannah, the rainforest, the desert or the ocean.
- Whether travelling as a couple, a family or on your own and in order to satisfy individual needs and personalities, our properties range from high-end luxury to more affordable options.
- Our dedicated team with 30 years' experience of designing perfect safaris works hand in hand with your travel agent – an Africa specialist in their own right – to design a journey that suits your budget and bucket list.
- Our own bush airline – Wilderness Air – means that we can create a seamless journey that allows you to move from one place to the next on your itinerary without hassles.
- We offer complete, tailor-made services throughout southern Africa including logistics, sightseeing and accommodation in our camps as well as an extensive list of other places – and of course our own set-departure guided journeys known as Explorations.
- We operate a touring and transfers business – Wilderness Touring – in the tourism hubs of Cape Town (South Africa), Victoria Falls (Zimbabwe), Livingstone (Zambia) and Windhoek (Namibia).

At Wilderness Safaris, we create journeys, not holidays. A journey is an immersive experience, one that changes how you view the world in general and the wild places of Africa in particular.



Why we do what we do

Awards

Condé Nast
Traveler

TRAVEL+
LEISURE


VIRTUOSO.
PREFERRED ON-SITE


TOURISM+TOMORROW
awards

2014

- Travel + Leisure 2014 World's Best Awards (Best Tour Operator & Safari Outfitter) – Wilderness Safaris (4th)
- Wilderness Holdings Integrated Report recognised as 6th best in the world

2013

- US Travel + Leisure 2013 World's Best Awards – Wilderness Safaris (5th Top Safari Operator)
- Condé Nast Traveler World Savers Award – Wilderness Safaris

2012

- Travel + Leisure Global Vision Award (Leadership) – Wilderness Safaris
- WTTC Tourism for Tomorrow Awards (Global Tourism Business) – Wilderness Safaris (Finalist)
- Outside Magazine Active Travel Awards (Best Travel Company) – Wilderness Safaris (runner up)

- The environment is at the heart of our beliefs and values. Our quest is to come to understand the wilderness better, to respect it, to care for it and to share it with our guests.
- We are serious about what we do and believe fully in our vision of contributing meaningfully to African conservation.
- Our vision is encapsulated by “the 4Cs,” a concept that suggests that our organisation aims to be truly sustainable by committing to the four dimensions of Commerce, Conservation, Community and Culture:
 - **Commerce** deals with our ecotourism offerings and products and is perhaps the most critical element to sustainability in the modern world.
 - **Conservation** is divided into *Environmental Management Systems* i.e., building and managing our camps in the most eco-friendly way possible, and *Biodiversity Conservation* i.e., the understanding, management and protection of the wildlife and ecosystems with which we are involved.
 - **Community** is all about the people at the heart of our business: *Internal Community* – our staff across all our regions, and *External Community* – comprising the rural communities that either own the land on which we operate or live adjacent to these areas.
 - **Culture** is a multifaceted element that governs respect for the culture of all employees as well as the remote rural communities surrounding the conservation areas.
- Our non-profit trusts – the Wilderness Wildlife Trust and Children in the Wilderness – help us drive this vision. The **Wilderness Wildlife Trust** funds projects addressing the needs of existing wildlife populations, seeks solutions to save threatened species and provides education and training for local communities. **Children in the Wilderness** is an environmental and life skills educational programme that focuses on the next generation of rural decision makers – the children of Africa.

Our Camps

In Zimbabwe and Zambia, our camps are typically small, intimate safari bases in superb locations, ranging in size from just four units (with a total of eight beds) to 12. Here we want our guests to be immersed in Africa: while lying in bed to hear the roar of the lion, the grunting of hippo, the sigh of the wind.

In order to fulfil individual needs, we have several categories of accommodation, as explained at right.

Of paramount importance to us is that our camps have as little impact on the environment as possible. This is relevant not only during the building process, but also during day-to-day operating and takes into account all elements of environmental impact, from the visual and aural implications, to effects on soil, the water table, vegetation, game movement, and so on.

All of our camps undergo rigorous in-house and independent environmental impact assessments (EIAs) prior to construction. Wherever possible, renewable energy for our electricity and water heating requirements is provided through photovoltaic solar arrays. Waste water treatment, recycling and fuel storage, as well as procurement of all goods and services, are also carefully considered. All our camps undergo comprehensive biannual audits, making them some of the most sustainable and responsible in Africa. We believe that – more than just comfort and life-changing experiences – our camps provide the luxury of space and a clean conscience.



Classic Camps

Our Classic camps are luxury tented camps, all offering stylish and spacious accommodation, with superb facilities. All bedrooms have en-suite bathrooms and decks overlooking the magnificent surroundings.

ZIMBABWE

- Linkwasha Camp • Little Makalolo Camp
- Ruckomechi Camp

ZAMBIA

- Shumba Camp • Busanga Bush Camp
- Toka Leya • The River Club



Adventures Camps

Larger and more convivial, our Adventures camps comprise units that are generally tented, extremely comfortable with en-suite bathrooms and all the amenities to make you feel at home. Note: activities at these camps may be at extra cost.

ZIMBABWE

- Davison's Camp



Luxury star bed – an adventurous and romantic interlude (Ruckomechi Camp, Zimbabwe)



Classic camp room and deck (Shumba Camp, Zambia)



Outdoor 'honeymoon' bath (Ruckomechi Camp, Zimbabwe)



Adventures camp room (Davison's Camp, Zimbabwe)

Idyllic Classic camp location (Shumba Camp, Zambia)





Wilderness Air pilot team with Cessna Caravan and Cessna 206 (Victoria Falls Airport)

Between Camps

From the moment you arrive in Africa, to your departure and every point in between, Wilderness Safaris people are ready and waiting for you.

We want to ensure as seamless and smooth an experience as possible whether in Zimbabwe or Zambia. This first takes the form of a “meet and greet” at the airport of arrival (usually Victoria Falls, Livingstone, or Lusaka) where a representative of Wilderness Safaris welcomes and briefs you, before taking you through to your next flight or transfer.

Aside from being the site of one of the Seven Natural Wonders of the World, Victoria Falls, and the two towns on the Zambian and Zimbabwean sides of the river (Livingstone and Victoria Falls respectively), are our operational bases for these two countries. Victoria Falls is the hub for Wilderness Air, our own “bush airline.”

In Zimbabwe, Wilderness Air is a key element of your safari experience, flying you between remote bush camps and then back to international airports for onward connections, with other charter companies fulfilling this in Zambia. Victoria Falls is also home to Wilderness Touring, our touring and transfer business that enhances any visit to the area whether sightseeing, shopping or enjoying cultural activities.

Victoria Falls is a 'must do' experience for every visitor to either Zimbabwe or Zambia



WELCOME TO ZIMBABWE



Canoe-based wildlife viewing (Mana Pools)



Walking safari (Mana Pools)



Game drive elephant encounter (Hwange)



Buffalo herd slaking its mid-morning thirst (Hwange)

Cradled between two great African rivers – the myth-shrouded, perennial Zambezi and the “great grey green greasy” seasonal Limpopo – Zimbabwe is blessed with bountiful natural resources.



Between these two majestic watercourses lies a wealth of scenic landscapes, remnants of ancient civilisations and incredible wildlife. Spectacular granite landscapes rise up out of miombo woodland and mopane savannah in the south-west and the central plateau has extensive moist grasslands and broad-leaved woodland. To the south-east lie the dry woodlands and bushveld of the lowveld, while in the north-west corner, the Zambezi River pours over the world-famous **Victoria Falls**.

Below the Falls, the Zambezi zigzags through the Batoka Gorges before carving a giant arc around the north of the country, great cliffs sliding down into riverine forest and wide floodplains. The river flows into Lake Kariba and then onward through the hot low-lying Zambezi Valley and the game-rich World Heritage Site of **Mana Pools National Park**.

Along the Botswana border, the easternmost tongues of the Kalahari sands creep into the country and mix with the teak forests of the interior. Here Zimbabwe’s largest national park, **Hwange**, is home to some of southern Africa’s last great elephant, buffalo and sable herds.

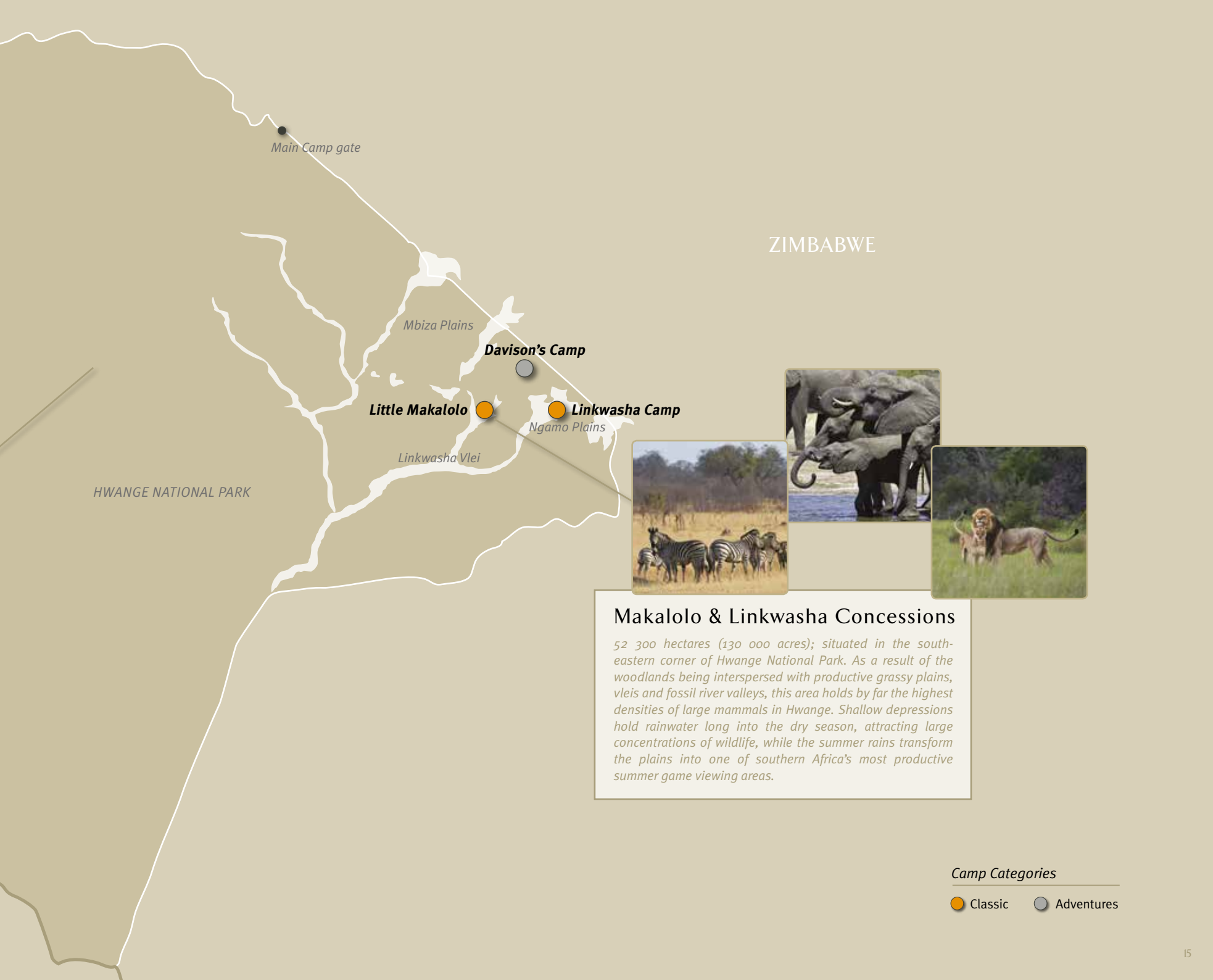
CAMPS IN ZIMBABWE – HWANGE



Hwange National Park

1.4 million hectares (3.4 million acres); Zimbabwe's largest and most popular national park. Landscapes range from the rugged, hilly country of the north to vast swathes of broad-leafed woodland across the centre, and the fossil river valleys, vleis and plains in the south-east. The sandy soils of the Kalahari dominate in the south-west, resulting in a unique meeting of two ecosystems and their associated fauna – oryx (an arid savannah species) being found side by side with species like sable (more at home in moist woodland).

BOTSWANA



Main Camp gate

ZIMBABWE

Mbiza Plains

Davison's Camp

Little Makalolo

Linkwasha Camp

Ngamo Plains

Linkwasha Vlei

HWANGE NATIONAL PARK



Makalolo & Linkwasha Concessions

52 300 hectares (130 000 acres); situated in the south-eastern corner of Hwange National Park. As a result of the woodlands being interspersed with productive grassy plains, vleis and fossil river valleys, this area holds by far the highest densities of large mammals in Hwange. Shallow depressions hold rainwater long into the dry season, attracting large concentrations of wildlife, while the summer rains transform the plains into one of southern Africa's most productive summer game viewing areas.

Camp Categories

- Classic
- Adventures



Linkwasha Camp

Linkwasha Camp (opening 2015) is built on the site of the “old” Linkwasha Camp and is thus a symbol of our 18-year connection to Zimbabwe. Overlooking a pan that is a magnet for game year round, the fresh, airy design of the camp is complemented by an eclectic mix of contemporary interiors. The main area includes various multi-level decks, a pool and a winter lounge complete with fireplace and library.

Superb wildlife at the most exclusive camp in Hwange

Highlights

The private Linkwasha Concession is known for its outstanding winter game viewing – including enormous herds of elephant that gather at the waterholes – and this is supplemented by the abundance of wildlife found on the nearby Ngamo Plains in summer. Aside from buffalo, giraffe and zebra, special sights here include sable, roan and eland, while the predators include lion, cheetah, leopard and spotted hyaena. The diversity of birds mirrors the equally varied landscape.



Linkwasha Camp at a Glance

Category: Classic

9 Tents (including 1 Family Tent): Spacious traditional style; en-suite facilities; private veranda

Experiences: Day and night game drives • Guided walks • Viewing platforms • Village visits



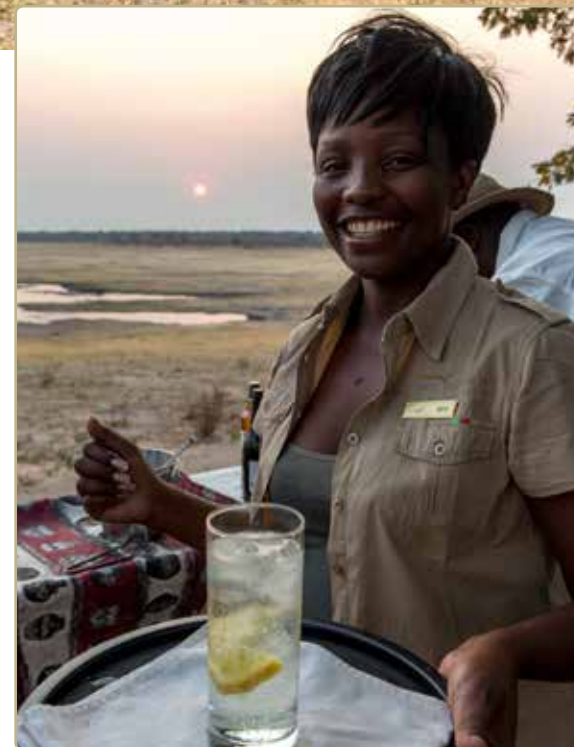
Little Makalolo

Intimate and exclusive, Little Makalolo is situated in the remote south-east of Hwange, looking out at a waterhole to which animals are drawn in their numbers in the dry season. A false mopane tree in the centre of the camp shades a dining and living area, with a plunge pool in which to cool off, and an open area for convivial evening fireside tales. During siesta hours, you can enjoy outstanding wildlife viewing at the log pile hide that overlooks the waterhole in front of camp.

Highlights

Little Makalolo is in one of Hwange's best game viewing areas, where a number of shallow pans in the vicinity draw a constant parade of elephant (estimated at 30 000 in the Park), buffalo, southern giraffe and Burchell's zebra, creating one of the densest concentrations of game in Africa. Sable, roan and eland are special here, with lion, leopard, wild dog and cheetah present as apex predators.

*Endless camp
waterhole traffic ...
the quintessential
Hwange experience.*





Little Makalolo at a Glance

Category: Classic

6 Tents (including 1 Family Tent): Spacious, en-suite traditional-style tent; outdoor shower; solar power; private veranda

Experiences: Day and night game drives • Guided walks • Waterhole hides and viewing platforms • Village visits



Davison's Camp at a Glance

Category: Adventures

9 Tents (including 1 Family Tent): Twin-bedded Meru-style; en-suite facilities; private veranda

Experiences: Day and night game drives • Guided walks • Viewing platforms • Village visits





Davison's Camp

Davison's Camp is beautifully situated in the private Linkwasha Concession, in the south-eastern section of Hwange National Park. Named after the founder of Hwange National Park and its first warden, Ted Davison, it is tastefully hidden beneath a grove of false mopane trees. Both the guest tents and the main area – comprising a lounge, dining room and plunge pool – look out at a much-frequented waterhole and open plain.

Highlights

In the summer, wildlife viewing is excellent, with buffalo, giraffe, sable, wildebeest, zebra and eland found in abundance on the open plains. In winter, the waterholes, or pans, are magnets for elephant, with hundreds coming down to drink at each one. Lion, leopard, spotted hyaena, common waterbuck and roan are all found on this private concession.

Named for Hwange's first warden and ideally positioned overlooking a productive waterhole.



Classic savannah safari scene: elephant, zebra and wildebeest (Hwange, Zimbabwe)



CAMPS IN ZIMBABWE – MANA POOLS



ZAMBIA



Chirundu Village ●

Ruckomechi Concession

3 930 hectares (9 700 acres); the only private-use concession within Mana Pools National Park. Exclusive access to a spectacular stretch of the Zambezi River, including productive floodplain, permanent inland pans, the Ruckomechi River, ana tree woodland, 'jesse' (diospyros thicket), gallery mopane forest, other habitats and excellent concentrations of wildlife make this an exceptional base for exploration of the unique Mana Pools National Park.

KARIBA ●



LOWER ZAMBEZI NATIONAL PARK

Chewore River

Chewore Safari Area

Mana River

Sapi River

Sapi Safari Area

Ruckomechi Camp

Ruckomechi River

Dande Safari Area

Mana Pools National Park

220 000 hectares (542 000 acres); the core of a larger 1.7 million hectares (4.2 million acres) of conservation estate at the heart of the Zambezi Valley. Running through the centre of this area is the magnificent Zambezi River – one of Africa's great waterways. Its floodplain banks are picturesque parklands dominated by the iconic ana tree. The combination of the waters of the river and the nutritious pods of the ana trees that are dropped in winter make for fruitful dry season game viewing.

MANA POOLS NATIONAL PARK

Nyakasanga River

Hurungwe Safari Area



Charara Safari Area

ZIMBABWE

Camp Categories

● Classic

Ruckomechi Camp

Ruckomechi Camp lies on the banks of the Zambezi with a superb view of the mountains across the river in Zambia, and is set amongst broad-canopied ana trees that are loved by elephants for their rich nutritious seeds. The central dining, bar, library and lounge areas face the escarpment, along with an infinity pool and hammocks, and an inviting, cushion-strewn star gazing deck. Ruckomechi boasts a favourite amongst guests: its outdoor ‘bath-with-a-view’ in a secluded, scenic spot.

Highlights

Both the river and the pools for which the Mana Pools National Park is named hold water year round, drawing all manner of wildlife and waterfowl, especially during the dry season. Below the canopy of giant trees, large numbers of elephant mingle with buffalo, impala, waterbuck, eland, kudu and the more secretive nyala. Lion frequent the floodplains and adjacent woodland, while leopard stalk the thickets and cheetah and the endangered wild dog are occasionally seen.

A sparkling broad river, shady trees, purple-hued mountains – and an elephant or two: this is the view from Ruckomechi.





Ruckomechi Camp at a Glance

Category: Classic

10 Tents (including 1 Family Tent): Spacious; en-suite bathroom; indoor and outdoor showers; veranda with view of the river

Experiences: Day and night game drives • Guided walks • Game viewing river cruises • Catch-and-release fishing (seasonal) • Canoeing

Season: April – October







Late afternoon scene on the Zambezi River floodplain (Mana Pools, Zimbabwe)

WELCOME TO ZAMBIA



Game drive lion encounter (Kafue)



Sundowner spot (Kafue)



Walking safari (Victoria Falls)



Hot air balloon over Busanga Plains (Kafue, Zambia)

Landlocked in south-central Africa, the majority of Zambia straddles a central plateau that rises from 900 metres in the south to about 1 800 metres in the north, resulting in a mild, pleasant climate. To the east, the altitude falls away to the hot and humid river valleys of the Luangwa and Zambezi. To the north-west lie the headwaters of the Kafue and Zambezi, while in the north-east Lake Tanganyika is shared with Tanzania and the Democratic Republic of Congo.



Kafue National Park epitomises the remote, wild and diverse characteristics of the Zambian wilderness. Its Busanga Plains are perhaps the prime wildlife viewing destination in the country: immense open floodplains dotted with large herds of lechwe, puku, buffalo, wildebeest and even roan antelope.

Kafue is easily accessible from both Lusaka and Zambia's 'adventure capital' – Livingstone – outside **Victoria Falls** where visitors can choose to simply drink in the grandeur of the spectacle or to engage in any one of a multitude of adrenalin-raising activities.

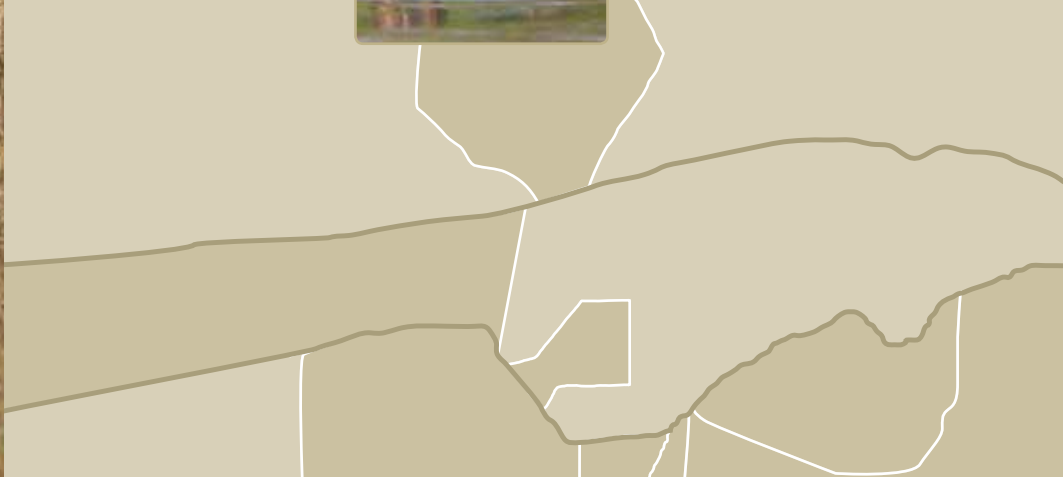
A remarkably low population in a deceptively massive country means that this is still Africa undiscovered with a timeless sense of wilderness and remoteness.

CAMPS IN ZAMBIA – KAFUE



Kafue National Park

2.24 million hectares (5.5 million acres); Zambia's largest and oldest national park and the heart of a massive conservation area of 7.3 million hectares (18.2 million acres). Here, extensive tracts of miombo woodland are interspersed with dambos (open, grassy areas) and floodplains of varying sizes. Three major water courses feed and drain the park: the Kafue, Lunga and Lufupa Rivers. Major features include the productive Busanga Plains in the north-west, and Lake Itezhi-Tezhi in the south.



Busanga Bush Camp
Shumba Camp

Busanga Plains Concession

28 000 hectares (69 000 acres); the expansive, grassy Busanga Plains are the jewel in Kafue's crown. Ringed by miombo woodland, the plains themselves are a mosaic of grassland, muddy channels and hippo pools, palm islands and fragmented papyrus swamp. This range of habitat provides fantastic concentrations of common species such as puku, lechwe, buffalo and wildebeest, but also comparative rarities like roan, oribi, sitatunga and Lichtenstein's hartebeest.



● LUSAKA

Ruckomechi Camp

MANA POOLS NATIONAL PARK

KAFUE NATIONAL PARK

Kafue Flats

LAKE KARIBA

ZIMBABWE

The River Club
● LIVINGSTONE
● Toka Leya
● VICTORIA FALLS

Camp Categories

● Classic



Shumba Camp

Shumba Camp is situated on a tree island right in the middle of the superbly flat Busanga Plains. Floodplain grasses stretch to the horizon, interrupted only by isolated protrusions of fig and palm trees. From the raised decks, the view is panoramic and often filled with grazing puku and lechwe; at sunrise the vista from the dining and bar area (as well as your own tent) seems surreal on days that the dawn fog blankets the landscape. Dinner takes place here or in the cosy boma where the staff often share elements of Zambian culture.

Highlights

Shumba means 'lion' – and appropriately, the camp is in the midst of various lion pride territories. Shumba's proximity to permanent water and the mix of seasonal and permanent floodplains makes it the perfect location for large numbers of plains game: besides puku and lechwe, rare roan, Lichtenstein's hartebeest and oribi can be found. Wild dog and cheetah are seen too.

Shaded by spectacular fig trees and with magnificent vistas over the open wildlife-rich plains.



Shumba Camp at a Glance

Category: Classic

6 Tents (including 1 Family Tent): Spacious and luxurious; en-suite; indoor and outdoor showers; raised deck for a view over the Plains

Experiences: Day and night game drives • Boating when the Plains are still inundated • Hot air ballooning (Aug – Oct)

Season: 1 June – 1 November





Busanga Bush Camp at a Glance

Category: Classic

4 Tents: Well-appointed Meru-style tent; en-suite;

Experiences: Day and night game drives • Hot air ballooning (seasonal)

Season: June – October



Busanga Bush Camp

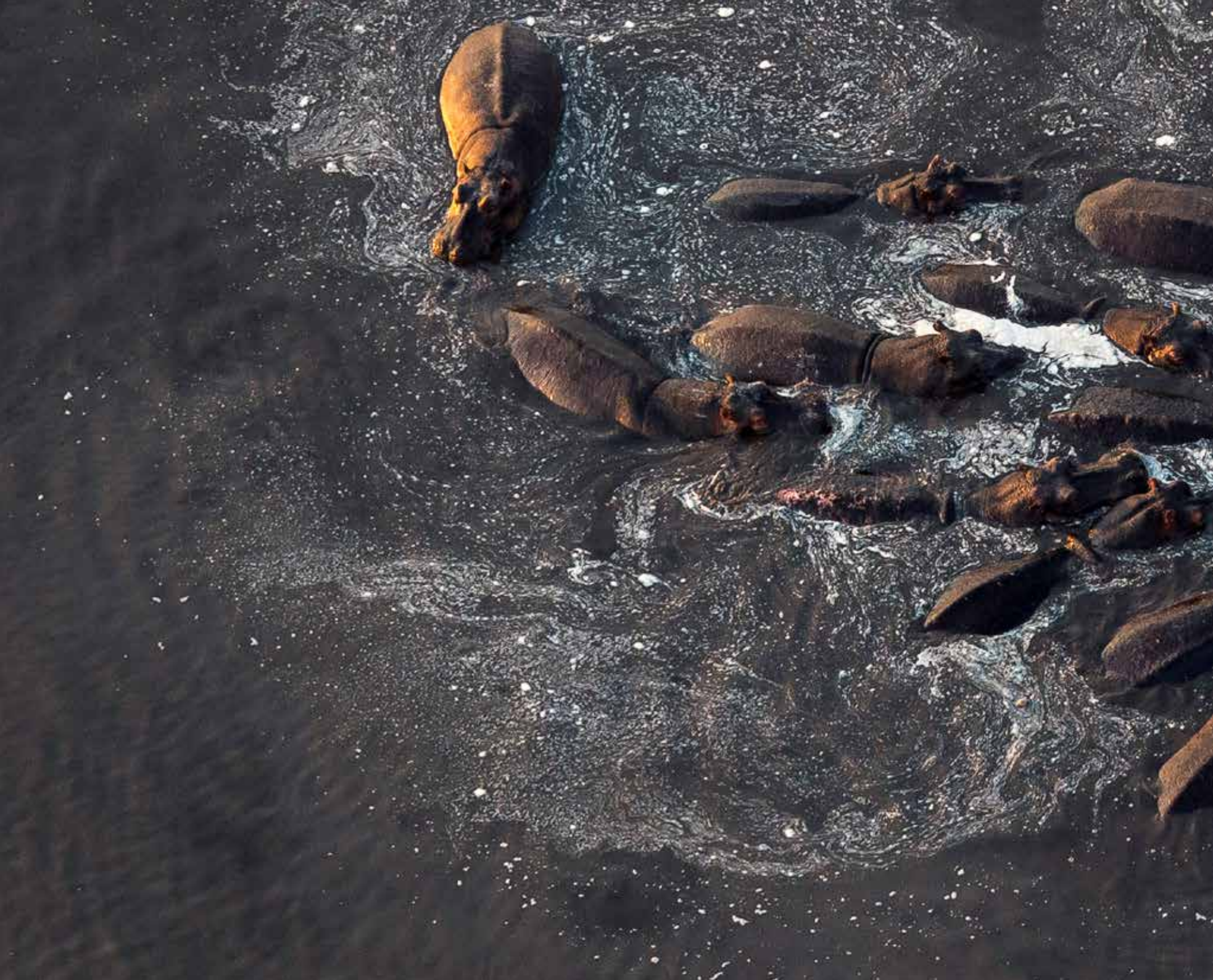
Intimate Busanga Bush Camp is hidden on a lush tree-island of sycamore fig trees. The lounge and bar area is under canvas with an uninterrupted view out over the plains; breakfast is often served here to take in the view of the herds of lechwe and puku feeding. A little further back the dining area is shaded by a majestic tree from which an unusual lantern chandelier hangs, romantically lighting up dinner, which is served in the open air.

Highlights

Thanks to the morning mist rising off the floodplains, guests can experience incredible sunrises with the sun a spectacular pink colour, while the floodplains teem with wildlife and birds. Large herds of red lechwe and puku are a common sight, together with oribi and resident roan, while zebra and wildebeest use the fringes of the plains. Lion are the most common predator, with occasional sightings of cheetah and wild dog.

Busanga's original camp; small, intimate and perfectly positioned at its heart.

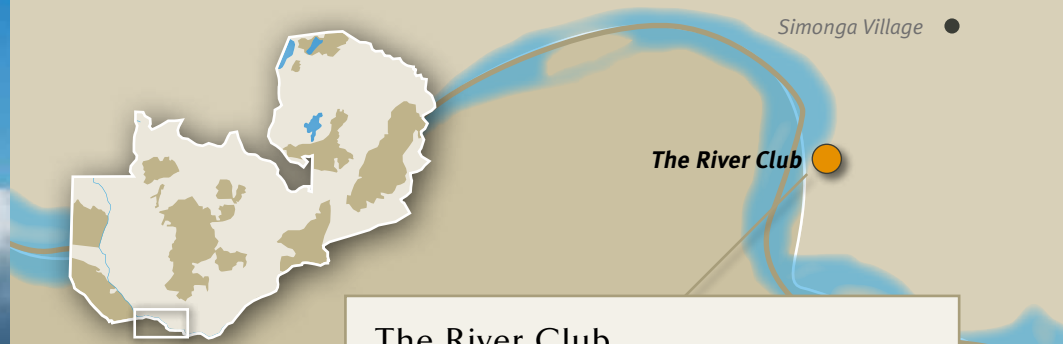




Caption: Bird's-eye view of a hippo pod from the hot air balloon (Kafue, Zambia)



CAMPS IN ZAMBIA - VICTORIA FALLS



The River Club

10 hectares (25 acres); ideal location opposite Zimbabwe's Zambezi National Park and outside the hubbub of Livingstone. The River Club occupies one of the few raised viewpoints on the Zambezi River upstream of Victoria Falls. This and its lush grounds mean that it offers a unique perspective and sanctuary that overlooks a pod of hippo and the wilds of Zimbabwe across the river.



Victoria Falls

1 700 metres (5 600 feet) wide and 108 m (360 ft.) high; known locally as Mosi-oa-Tunya (the smoke that thunders), due to its towering plume of spray that is visible at a distance. The Falls' maximum flow rate exceeds that of Igauzu and is more than double that of Niagara.



Sinde Village

ZAMBIA

LIVINGSTONE AIRPORT

MOSI-OA-TUNYA NATIONAL PARK

Toka Leya

ZAMBEZI NATIONAL PARK

LIVINGSTONE

ZIMBABWE

Lwanda Island

Kalunda Island

Princess Victoria Island

Devil's Cataract

Livingstone Island

VICTORIA FALLS

VICTORIA FALLS

River Gorges

Camp Categories

● Classic

Mosi-oa-Tunya National Park

6 859 hectares (17 000 acres); a beautiful stretch of Zambezi River conserving Zambia's only white rhino population. This small, but very diverse reserve covers a blend of mopane and broad-leafed woodland, river floodplain, riverine forest and braided river channel. Almost 20 km of Zambezi River frontage plays host to a healthy array of large mammals – buffalo, elephant, hippo, giraffe and zebra – revealing Zambia as it was when Livingstone 'discovered' the Falls.



Wilderness Touring

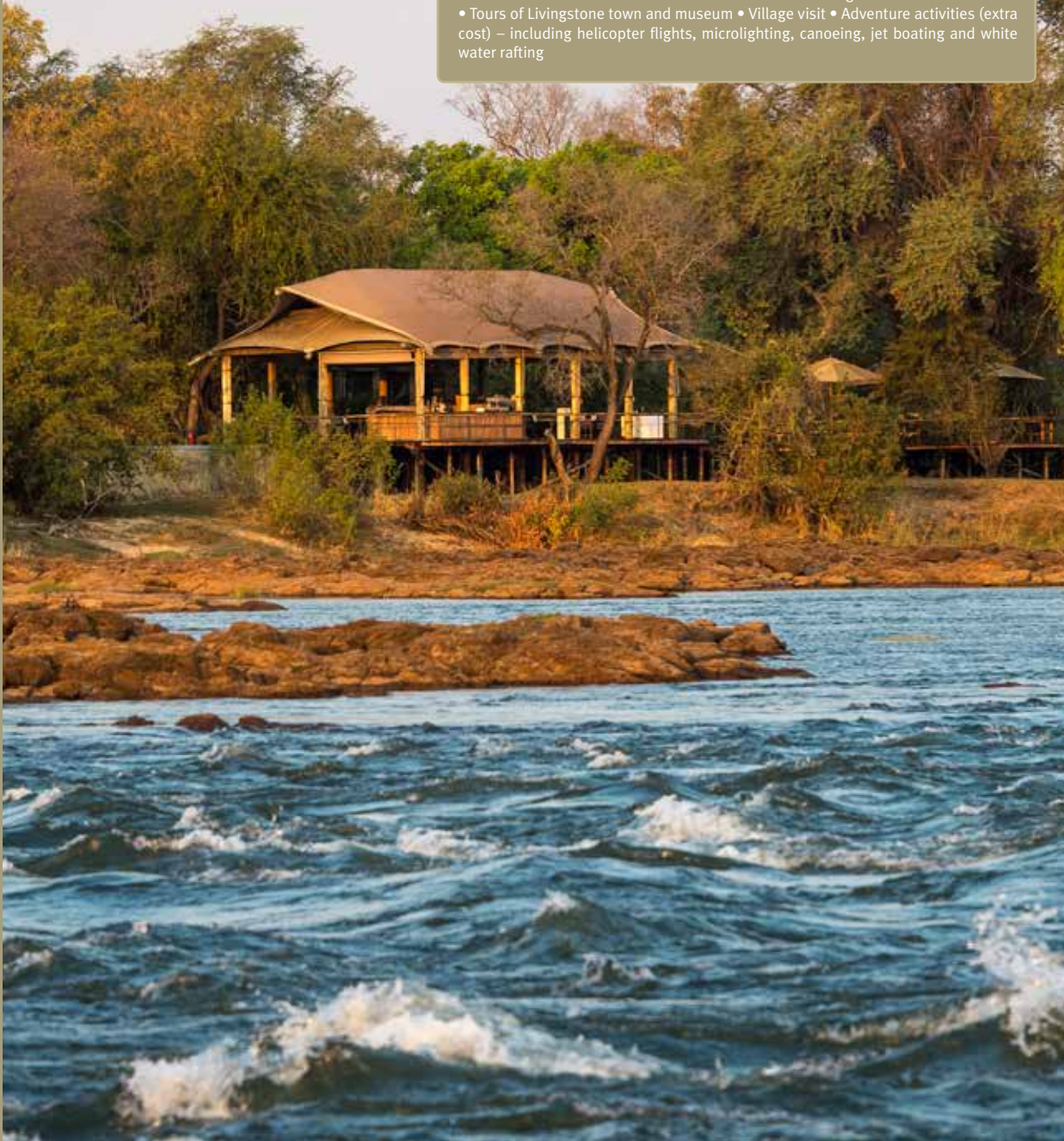
With offices in both Victoria Falls (Zimbabwe) and Livingstone (Zambia), Wilderness Touring is the perfect host and facilitator for all activities in and around this Natural Wonder of the World. Our fleet of late-model vehicles and team of passionate, knowledgeable guides are able to offer seamless airport transfers, Victoria Falls tours, cultural excursions and much more.



Toka Leya at a Glance

Category: Classic

12 Tents (including 3 Family Tents): Raised, spacious safari-style tent; en-suite; indoor and outdoor shower; climate control; expansive wooden deck with river view
Experiences: Victoria Falls tour (Zambian side) • Game drives in Mosi-oa-Tunya National Park • River cruises • Catch-and-release fishing • Guided nature walks • Tours of Livingstone town and museum • Village visit • Adventure activities (extra cost) – including helicopter flights, microlighting, canoeing, jet boating and white water rafting





Toka Leya

The swiftly-flowing Zambezi River hurries past Toka Leya Camp in the central part of Mosi-oa-Tunya National Park, just 12 km from the Victoria Falls. The eastern and main areas of camp are under a shady canopy of jackalberry, knobthorn and waterberry trees, while the western side is in a more open setting: an ancient baobab tree is the focal point of panoramic Zambezi vistas. There is ample space for relaxation with meals served on the sundeck, the pool deck and dining room all overlooking the river. The pizza oven and spa round off the camp experience.

Highlights

Toka Leya's location means that there is plenty to do here, from cruising down the Zambezi to visiting Victoria Falls, exploring Livingstone town to game driving through Mosi-oa-Tunya National Park. The Park has species such as buffalo, giraffe, zebra, wildebeest, impala and white rhino, while hippo, crocodile and elephant are regularly seen in or near the Zambezi.

Stay on the Mighty Zambezi and visit "The Smoke that Thunders."

The River Club

The River Club's well-appointed Edwardian house looks out over the Zambezi River, sporting a lounge, dining room, library and veranda, with manicured lawns on which meals are served. The gazebo and the summer house (with snooker room) are alternatives for private dining, while the infinity pool seems part of the great Zambezi itself. For the energetic, there is a gym, running track and tennis court.

High tea and croquet blend with African life on the forested banks of the Zambezi River.

Highlights

Situated just 18 km upstream from Victoria Falls, The River Club allows for in-depth and adventurous exploration of this Wonder. Livingstone, known as the “adventure capital” of Zambia, is also steeped in history. The Zambezi River is interspersed with vegetated islands, sandbanks and rocky rapids, and fringed with cool riparian forest – all a perfect sanctuary for hippo, crocodile and elephant, and prolific birdlife. The nearby Mosi-oa-Tunya National Park offers further wildlife viewing opportunities of buffalo, giraffe, zebra, wildebeest and white rhino.





The River Club at a Glance

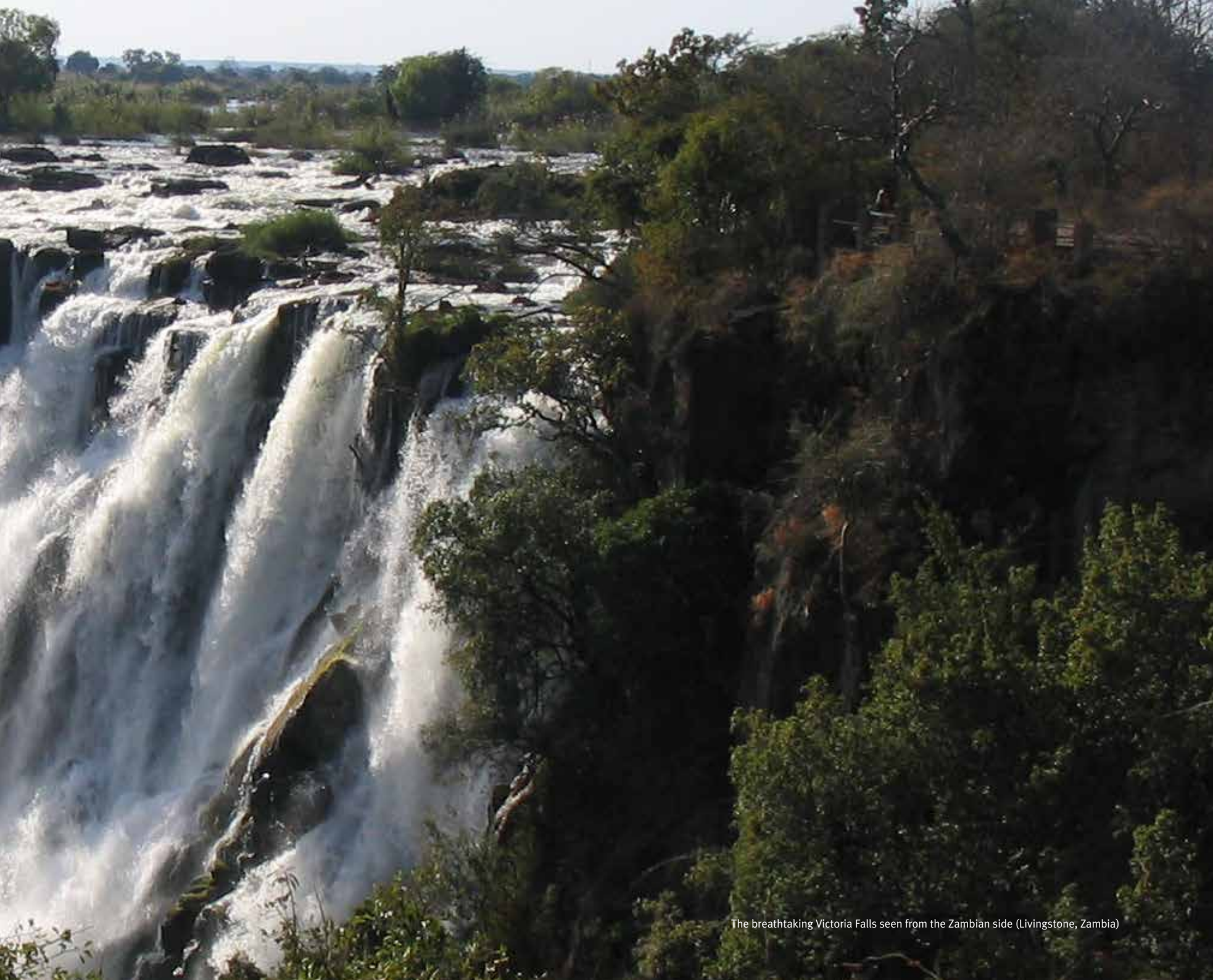
Category: Classic

10 Chalets (including 1 Family Chalet): Luxury; en-suite; air-conditioned; uninterrupted views of the Zambezi. The ultra-luxury Princess Mary Suite available for groups of 6

Experiences: Victoria Falls Tour (Zambian side) • Sundowner cruises • Tiger fishing • Village visit • Tours of Livingstone town and museum • Adventure activities (extra cost) – including helicopter flights, microlighting, canoeing, jet boating and white water rafting







The breathtaking Victoria Falls seen from the Zambian side (Livingstone, Zambia)

More Than Just a Safari

At Wilderness Safaris, our delight is to share the wild places of Africa with our guests, while our ultimate goal is to help make a difference to Africa, its people and its wildlife. As a guest, you are helping us to do so.

There is much more that needs to be done, however, which is why, some 20 years ago, we created the **Wilderness Wildlife Trust**, an independent entity that supports a wide variety of wildlife management, research and education projects throughout Africa. These projects address the needs of our wildlife, seek solutions to save threatened species and provide education and training for local communities. This has made our journey more meaningful and we've reached more people and places than before.

Conservation of animals and plants is only as strong as the people who live in their vicinity. If they're not interested, protection is likely to exist only on paper. That's why Africa's future lies in her children, and why our pride and joy is our **Children in the Wilderness** programme, which aims to educate the youth of Africa, inspiring and helping them to appreciate and thus protect their magnificent natural heritage.

Every year, we close some of our camps for a week at a time and groups of 16 to 25 children between the ages of 10 and 14 are hosted here, given the opportunity to experience these wilderness areas and their wildlife. During camp, the curriculum covers environmental education, HIV/ AIDS and nutrition and life skills, and the importance of conservation. No less importantly, throughout the year, Eco Clubs are held at the local schools (i.e. schools situated near Wilderness Safaris areas), where we can visit the children in their own environment, providing opportunities for all learners who are interested in the environment to meet, learn, discuss and expand their knowledge of their natural heritage.

Our guests can be proud to be part of this life-changing journey.



www.wildernesstrust.com



www.childreninthewilderness.com



Simonga Village Infrastructure Development (Zambia)



Children in the Wilderness (Toka Leya Camp, Zambia)



Cheetah Conservation (Hwange, Zimbabwe)



Nutrition programme (Jabulani School, Zimbabwe)



Victoria Falls Anti-Poaching Unit (Zimbabwe)

Congo

Pristine rainforest, incredible natural diversity and the best location to see western lowland gorillas and a host of other primates.



Botswana

Home to the unique Okavango Delta, with incredible safari experiences here, in the Linyanti and the Central Kalahari.

Namibia

The world's highest sand dunes, vast conservation areas, desert-adapted wildlife and nomadic traditional tribal cultures.



South Africa

The 'Rainbow Nation' and host to the Kruger Park, Table Mountain, diverse cultures and some of Africa's best tropical diving.



Where Else In Africa?



Kenya

The roots of 'safari,' and home to the planet's greatest large mammal migration and the burgeoning herds of the Laikipia Plateau.



Seychelles

Sandy white-beaches, warm-ocean Eden and tropical escape filled with unique species found nowhere else on Earth.



Zambia

Known as 'the real Africa,' with space, wilderness and wildlife to match the claim, whether in Kafue or Victoria Falls.



Zimbabwe

Classic safari destination teeming with big game in Hwange and Mana Pools National Parks, as well as the majestic Victoria Falls.

Africa is vast. The so-called 'dark continent' is nearly one quarter bigger than all of North America (including Alaska, Canada, Mexico and the USA), and the entire European continent would fit into its land surface no less than three times.

It is also not as densely populated as is often believed. Population density is only 46% that of Europe and 35% that of Asia. Despite this, there are between 2 100 and 3 000 indigenous African languages and cultures, a diversity mirrored by the huge array of flora and fauna that occurs across the breadth of the continent.

This diversity of wildlife is unmatched anywhere else on the planet in terms of the range and numbers of large mammals – the megafauna. Africa plays host to more than 1 300 mammal species, while in comparison North America and Europe between them hold less than 600 species.

Vast intact savannah landscapes and ecosystems enable lion, herds of elephant, myriad plains game and even people to exist as they have done for thousands of years. The same is true of the rainforest and some of our closest relatives – chimpanzees and gorillas – as well as the deserts, off-shore islands and lakes.

The continent can be overwhelming in its multiplicity of destinations and experiences; to the left are a few of the highlights.



Exposure to traditional culture should be part of every safari (Ngamo Village, outside Hwange National Park)

Photographers list: Alistair Berg, Ben Illis, Cardo Kleberg, Caroline Culbert, Chris Roche, Collin Bell, Dan Myburg, Dana Allen, David Kneale, Frank Weitzer, Kevin van Breda, Mark Mansfield, Martin Benadie, Michael Poliza, Michael Viljoen, Mike Myers, Olwen Evans, Russel Friedman, Will Burrard-Lucas
If we have left anyone out, this has not been intentional and we apologise.

READ MORE ABOUT US...

ONLINE



www.wilderness-safaris.com



www.wilderness-collection.com



www.wildernesstrust.com



www.childreninthewilderness.com



www.wilderness-the4cs.com



www.we-are-wilderness.com



www.facebook.com/wilderness.friends

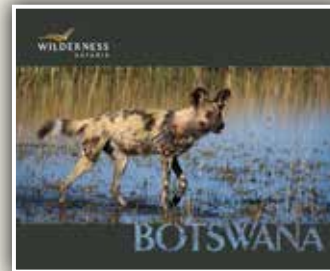


www.twitter.com/wearewilderness

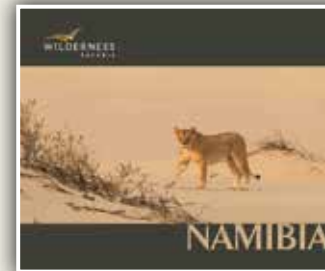
IN PRINT



Wilderness Safaris – Africa



Wilderness Safaris – Zimbabwe,
Zambia & Malawi



Wilderness Safaris – Namibia



The Wilderness Collection


WILDERNESS SAFARIS



www.wilderness-safaris.com